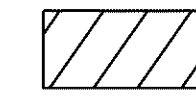


g:\project\lak\13486\mot\sheets\13486MPLN1.dgn 6/23/2008 11:24:37 AM jmoderia

- NOTES: 1. CONTRACTOR SHALL COVER ALL EXISTING CONFLICTING PAVEMENT MARKINGS IN ACCORDANCE WITH 614.11, F.1B.
 2. FOR PAVEMENT MARKING LEGEND SEE SHEET 56
 3. ALL EXISTING SIGNS TO REMAIN UNLESS OTHERWISE SHOWN, THE CONTRACTOR SHALL KEEP ALL EXISTING SIGNS VISIBLE DURING CONSTRUCTION.

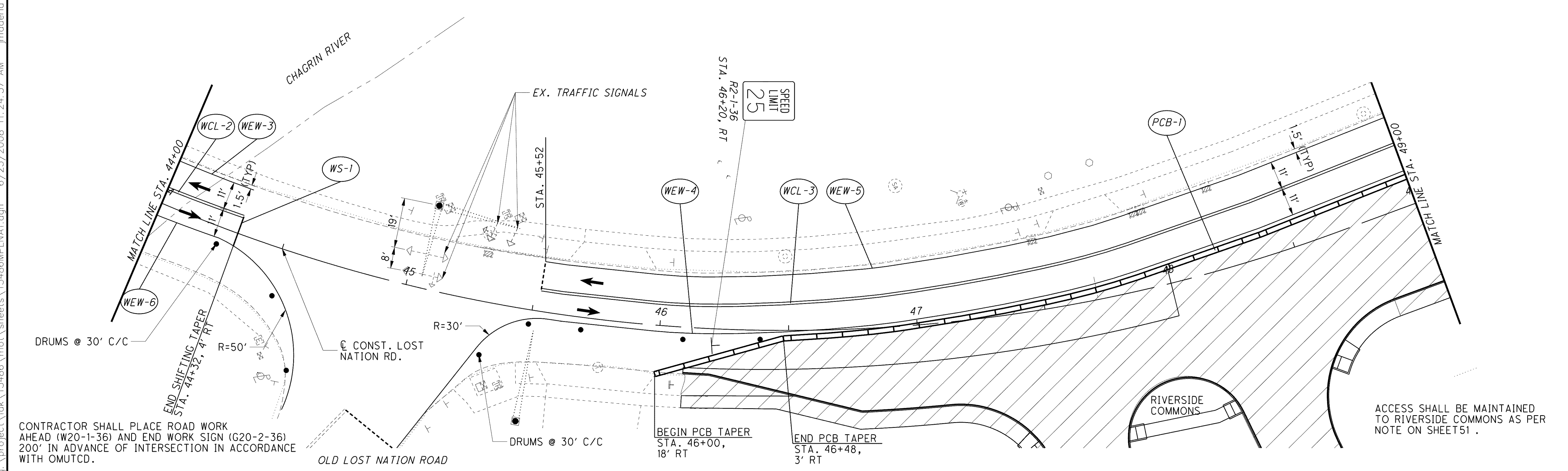
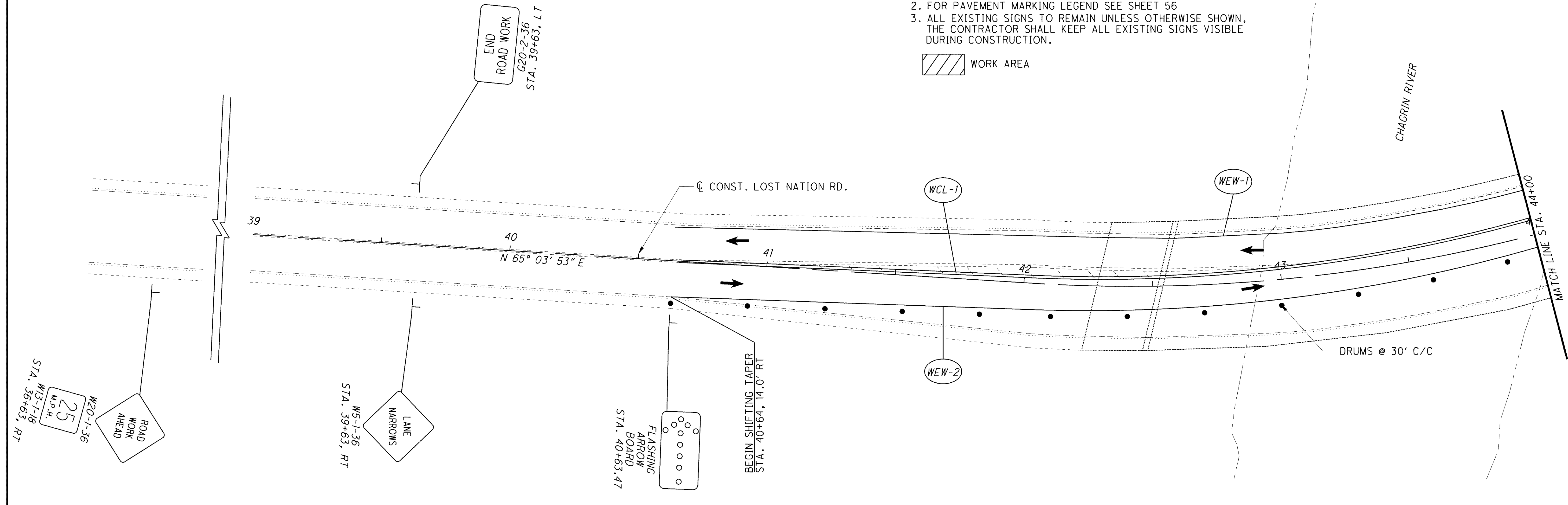
 WORK AREA

CALCULATED JMM
 CHECKED DRJ

0 10 20 40
 HORIZONTAL SCALE IN FEET

**M.O.T. - LOST NATION RD. STAGE 1
 PHASE B STEP 3 - STA. 36+63 TO STA. 49+00**

LAK-2-3.32



CONTRACTOR SHALL PLACE ROAD WORK AHEAD (W20-1-36) AND END WORK SIGN (G20-2-36) 200' IN ADVANCE OF INTERSECTION IN ACCORDANCE WITH OMUTCD.

ACCESS SHALL BE MAINTAINED TO RIVERSIDE COMMONS AS PER NOTE ON SHEET 51.