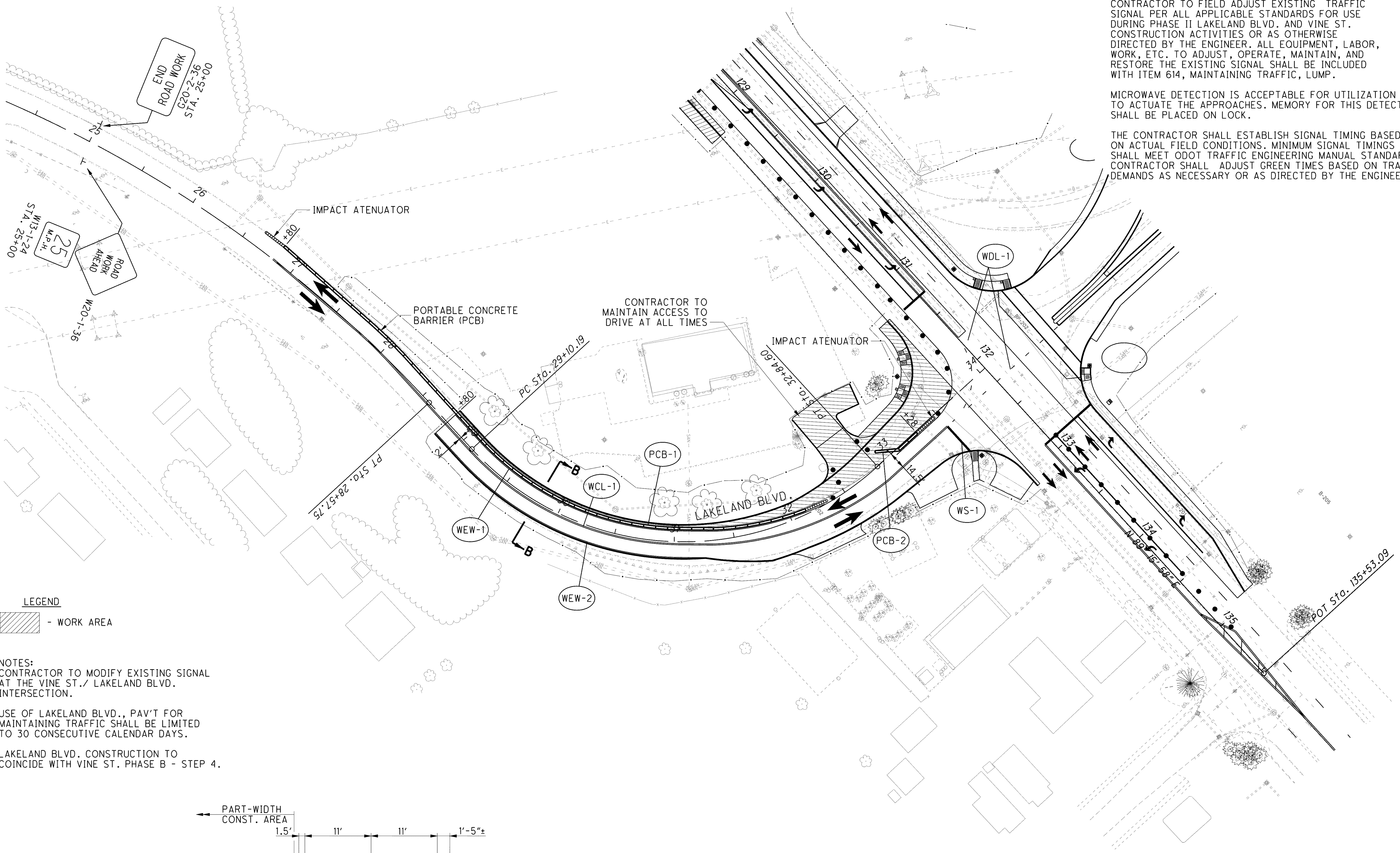


C:\Project\lak\13486\mot\sheet\13486MP002E.dgn 6/24/2008 1:25:20 PM djozily



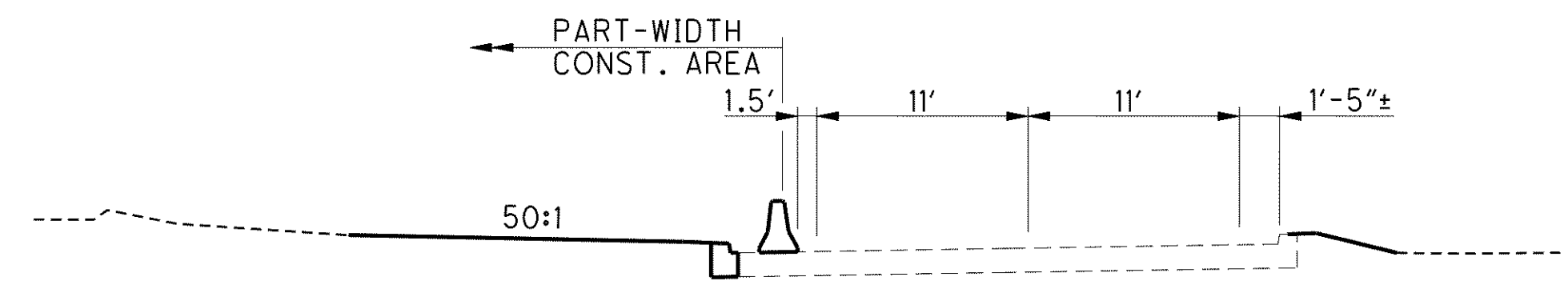
NOTES:
 CONTRACTOR TO FIELD ADJUST EXISTING TRAFFIC SIGNAL PER ALL APPLICABLE STANDARDS FOR USE DURING PHASE II LAKELAND BLVD. AND VINE ST. CONSTRUCTION ACTIVITIES OR AS OTHERWISE DIRECTED BY THE ENGINEER. ALL EQUIPMENT, LABOR, WORK, ETC. TO ADJUST, OPERATE, MAINTAIN, AND RESTORE THE EXISTING SIGNAL SHALL BE INCLUDED WITH ITEM 614, MAINTAINING TRAFFIC, LUMP.
 MICROWAVE DETECTION IS ACCEPTABLE FOR UTILIZATION TO ACTUATE THE APPROACHES. MEMORY FOR THIS DETECTOR SHALL BE PLACED ON LOCK.
 THE CONTRACTOR SHALL ESTABLISH SIGNAL TIMING BASED ON ACTUAL FIELD CONDITIONS. MINIMUM SIGNAL TIMINGS SHALL MEET ODOT TRAFFIC ENGINEERING MANUAL STANDARDS. CONTRACTOR SHALL ADJUST GREEN TIMES BASED ON TRAFFIC DEMANDS AS NECESSARY OR AS DIRECTED BY THE ENGINEER.

CALCULATED JMR
 CHECKED EJC

0 20 40 80
 HORIZONTAL SCALE IN FEET

LEGEND
 [Hatched Box] - WORK AREA

NOTES:
 CONTRACTOR TO MODIFY EXISTING SIGNAL AT THE VINE ST./ LAKELAND BLVD. INTERSECTION.
 USE OF LAKELAND BLVD., PAV'T FOR MAINTAINING TRAFFIC SHALL BE LIMITED TO 30 CONSECUTIVE CALENDAR DAYS.
 LAKELAND BLVD. CONSTRUCTION TO COINCIDE WITH VINE ST. PHASE B - STEP 4.



TYPICAL SECTION B-B

MAINTENANCE OF TRAFFIC - LAKELAND BLVD.
 STA. 131+00 TO END WORK (PHASE B-STEP 4)

LAK-2-3.32