

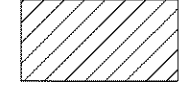
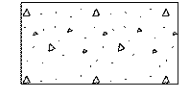


CALCULATED JMR
CHECKED EJC

MAINTENANCE OF TRAFFIC - LAKELAND BLVD. - STA. 131+00 TO END WORK (PHASE B-STEP 4)

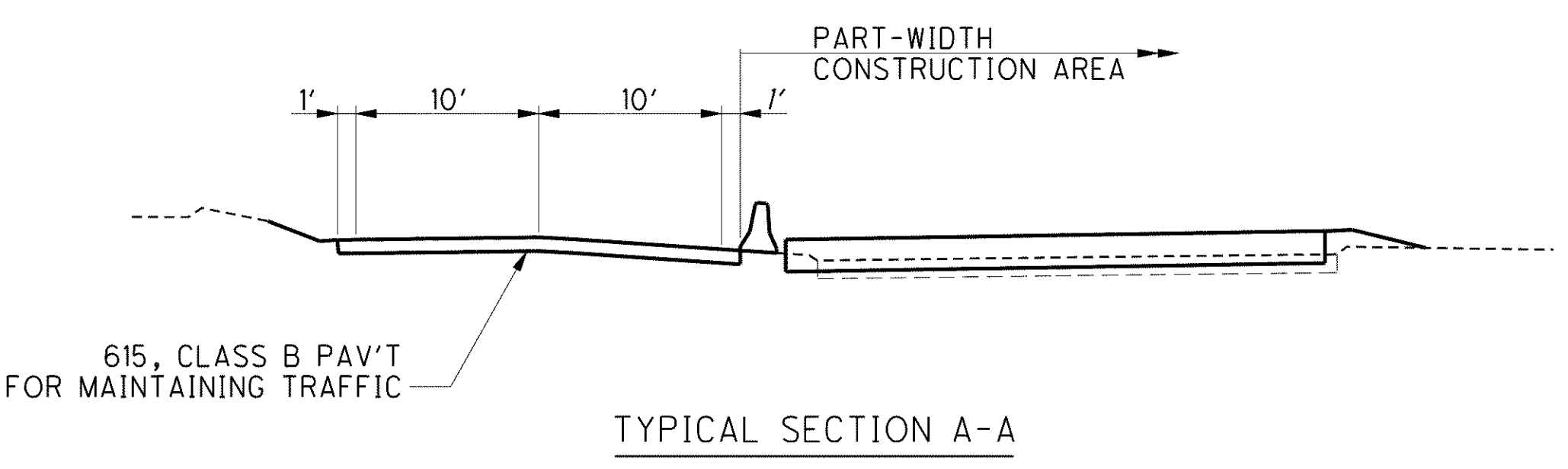
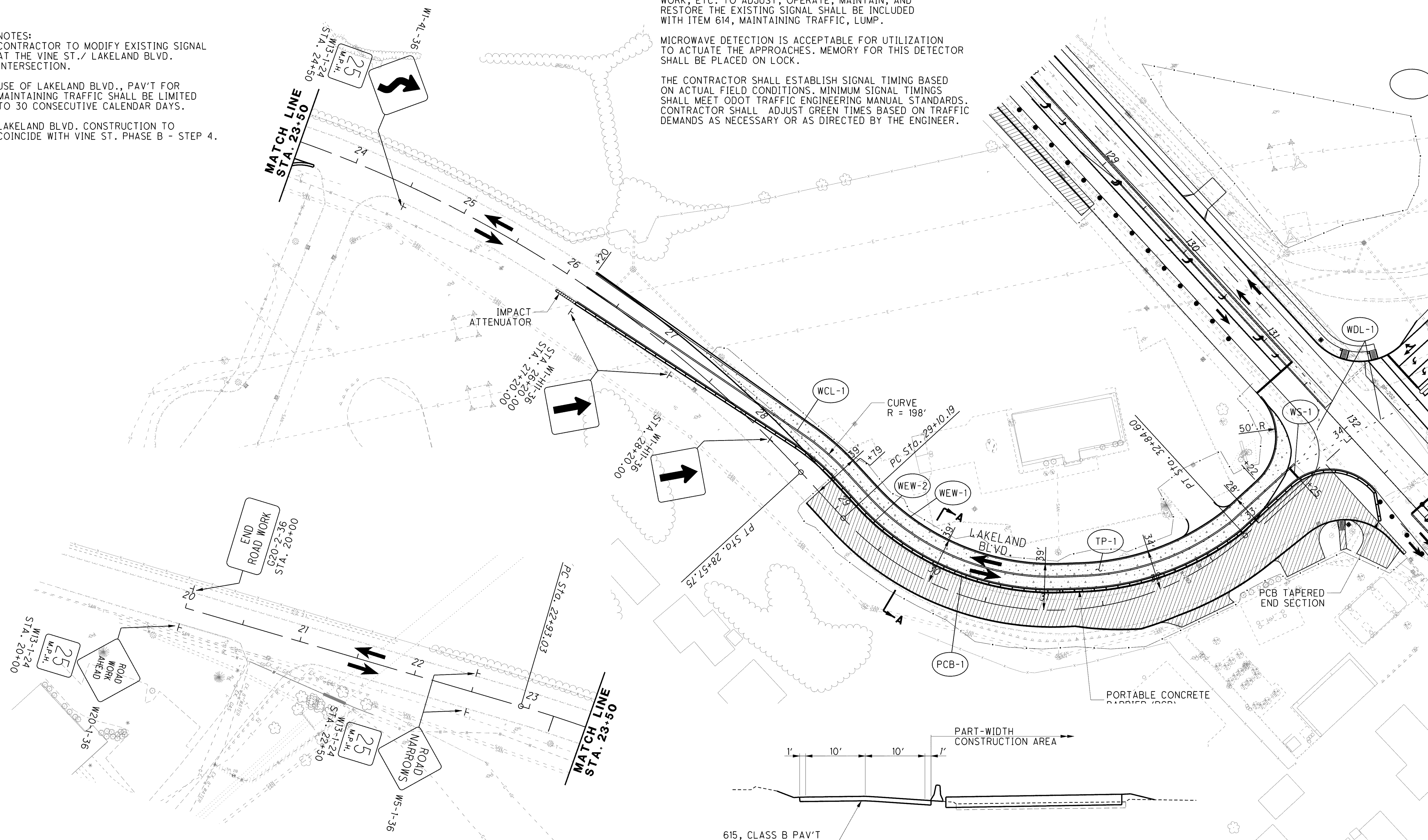
LAK-2-3.32

222
1679

- LEGEND**
-  - WORK AREA
 -  - TEMPORARY PAVEMENT

NOTES:
 CONTRACTOR TO MODIFY EXISTING SIGNAL AT THE VINE ST./ LAKELAND BLVD. INTERSECTION.
 USE OF LAKELAND BLVD., PAV'T FOR MAINTAINING TRAFFIC SHALL BE LIMITED TO 30 CONSECUTIVE CALENDAR DAYS.
 LAKELAND BLVD. CONSTRUCTION TO COINCIDE WITH VINE ST. PHASE B - STEP 4.

NOTES:
 CONTRACTOR TO FIELD ADJUST EXISTING TRAFFIC SIGNAL PER ALL APPLICABLE STANDARDS FOR USE DURING PHASE I LAKELAND BLVD. AND VINE ST. CONSTRUCTION ACTIVITIES OR AS OTHERWISE DIRECTED BY THE ENGINEER. ALL EQUIPMENT, LABOR, WORK, ETC. TO ADJUST, OPERATE, MAINTAIN, AND RESTORE THE EXISTING SIGNAL SHALL BE INCLUDED WITH ITEM 614, MAINTAINING TRAFFIC, LUMP.
 MICROWAVE DETECTION IS ACCEPTABLE FOR UTILIZATION TO ACTUATE THE APPROACHES. MEMORY FOR THIS DETECTOR SHALL BE PLACED ON LOCK.
 THE CONTRACTOR SHALL ESTABLISH SIGNAL TIMING BASED ON ACTUAL FIELD CONDITIONS. MINIMUM SIGNAL TIMINGS SHALL MEET ODOT TRAFFIC ENGINEERING MANUAL STANDARDS. CONTRACTOR SHALL ADJUST GREEN TIMES BASED ON TRAFFIC DEMANDS AS NECESSARY OR AS DIRECTED BY THE ENGINEER.



C:\Project\lak\13486\mot\sheet\13486MP002D.dgn 6/24/2008 1:24:29 PM djozily