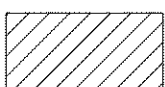
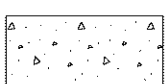

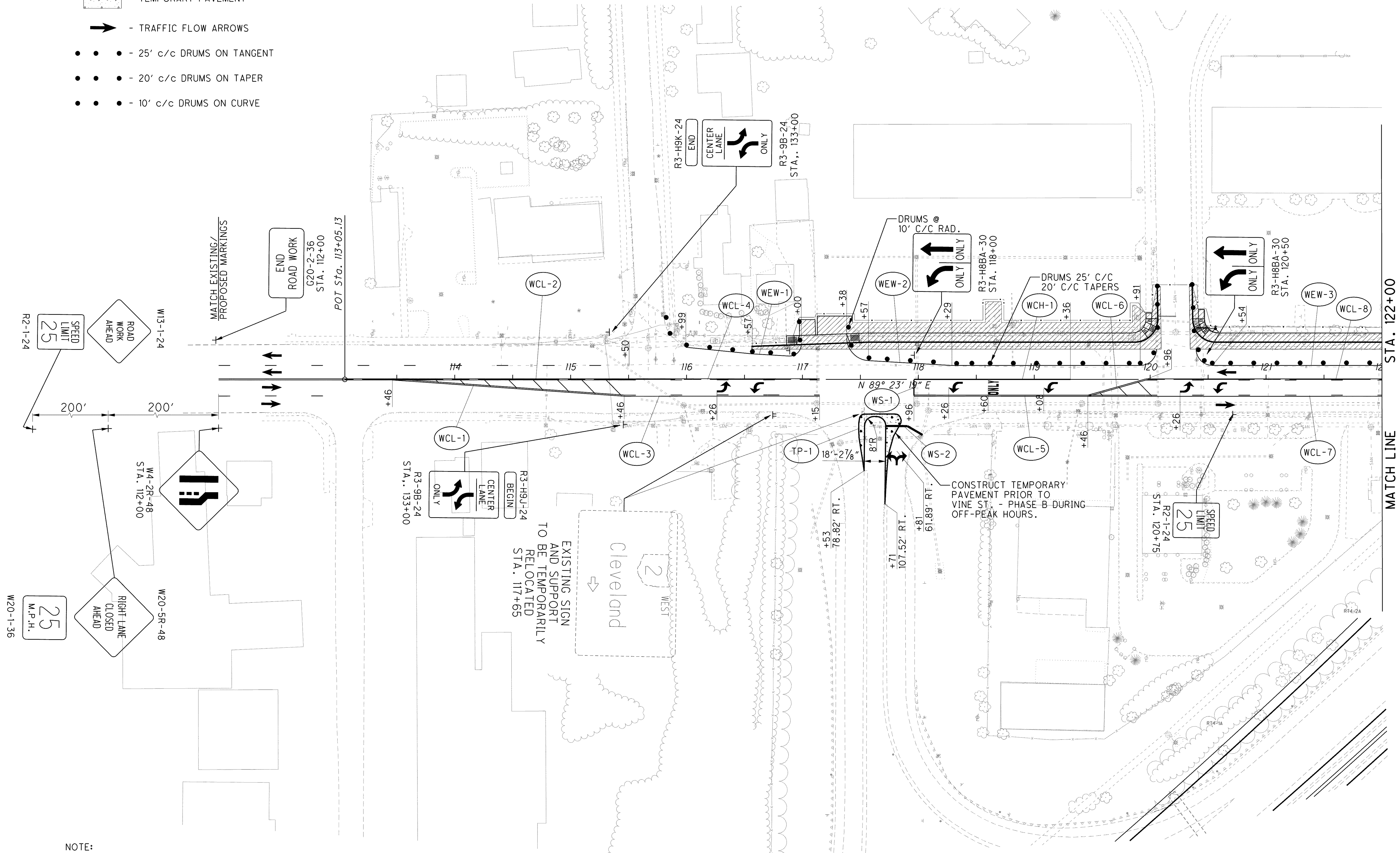


LEGEND

-  - WORK AREA
-  - TEMPORARY PAVEMENT
-  - TRAFFIC FLOW ARROWS
- • • - 25' c/c DRUMS ON TANGENT
- • • - 20' c/c DRUMS ON TAPER
- • • - 10' c/c DRUMS ON CURVE



NOTE:
 ALL PROPOSED WORK INVOLVING REMOVAL OF THE EXISTING CENTER CONCRETE ISLAND AND REPLACING WITH PAVEMENT ON VINE ST. SHALL BE COMPLETED PRIOR TO PHASE B IN ACCORDANCE WITH STANDARD CONSTRUCTION DRAWING MT-95.32.

CALCULATED JMR
 CHECKED EJC

**MAINTENANCE OF TRAFFIC - VINE ST.
 BEGIN WORK TO STA. 122+00 (PHASE B-STEP 3)**

LAK-2-3.32

216
 1679