



0 15 30 45 60
HORIZONTAL
SCALE IN FEET

CALCULATED EJC
CHECKED NAH

MAINTENANCE OF TRAFFIC - VINE STREET - EASTBOUND EXIT RAMP - TEMPORARY SIGNAL

LAK - 2 - 3.32

GENERAL NOTES:

CONTRACTOR SHALL INSTALL TEMPORARY TRAFFIC SIGNAL AS PER 614.10 PRIOR TO SHIFTING RAMP E TRAFFIC ONTO THE E.B. EXIT RAMP. ALL EQUIPMENT, LABOR, WORK, ETC. TO CONSTRUCT, OPERATE, MAINTAIN, AND ADJUST THE TEMPORARY SIGNAL SHALL BE INCLUDED WITH ITEM 614, SPECIAL-WORK ZONE TRAFFIC SIGNAL.

CONTRACTOR TO PLACE "NEW SIGNAL" WARNING SIGNS AS PER STD. DWG. MT-120.00.

THE UNDERGROUND UTILITIES ARE SHOWN ACCORDING TO INFORMATION FURNISHED BY THE UTILITIES CONCERNED. THEIR ACCURACY AND COMPLETENESS IS NOT GUARANTEED, THEREFORE THEY SHOULD BE RE-CHECKED AND VERIFIED BEFORE ANY UNDERGROUND OR EXCAVATION WORK BEGINS.

SIGNAL NOTES:

PHASE NUMBERS SHOWN ON THIS PLAN CORRESPOND TO AN 8 PHASE CABINET. A 4 PHASE CABINET IS PERMITTED FOR THE TEMPORARY SIGNAL. IF A 4 PHASE CABINET IS USED, THE PHASE NUMBERS SHALL BE 1 AND 2 IN THE ORDER SHOWN ON THE PHASE DIAGRAM.

MICROWAVE DETECTOR SHALL BE UTILIZED TO ACTUATE THE APPROACHES. MEMORY FOR THIS DETECTOR SHALL BE PLACED ON LOCK.

THE CONTRACTOR SHALL ESTABLISH SIGNAL TIMING BASED ON ACTUAL FIELD CONDITIONS AS NECESSARY. MINIMUM SIGNAL TIMINGS SHALL MEET ODOT TRAFFIC ENGINEERING MANUAL STANDARDS. CONTRACTOR SHALL ADJUST GREEN TIMES BASED ON TRAFFIC DEMANDS AS NECESSARY OR AS DIRECTED BY THE ENGINEER.

MINIMUM CLEARANCE FROM THE HIGHEST (CROWN) POINT ON THE PAVEMENT TO THE BOTTOM OF THE PROPOSED SIGNAL HEADS SHALL BE 16 FEET.

SIGNAL POLES SHALL BE LOCATED BEHIND DITCHES WHERE POSSIBLE. (REFER TO STD. CONST. DWG. MT-95.40 FOR CLEAR ZONE TABLE)

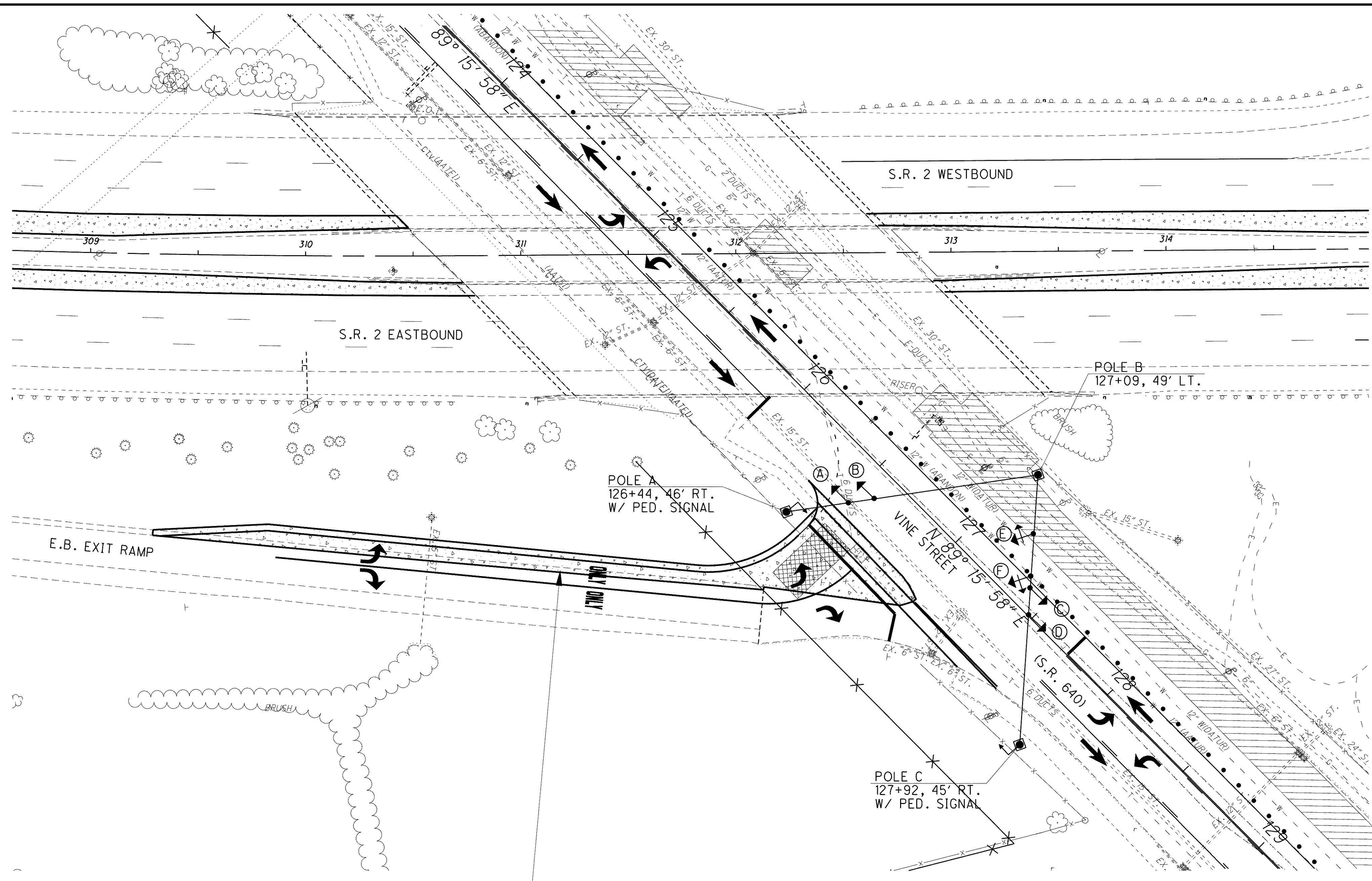
LEGEND

- PROPOSED SIGNAL HEAD FOR SPAN WIRE, 3 UNIT
- PROPOSED TEMPORARY SIGNAL POLE (WOOD PERMITTED)
- PROPOSED TEMPORARY CONTROLLER
- MICROWAVE DETECTOR AREA
- TEMPORARY TRAFFIC CONTROL DEVICE (DRUMS)

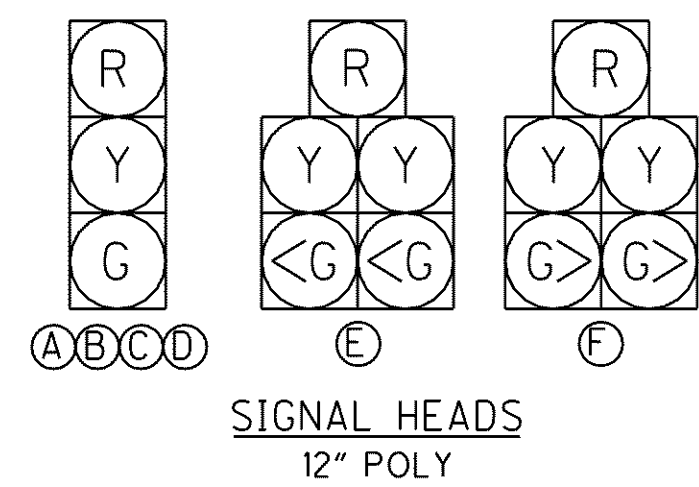
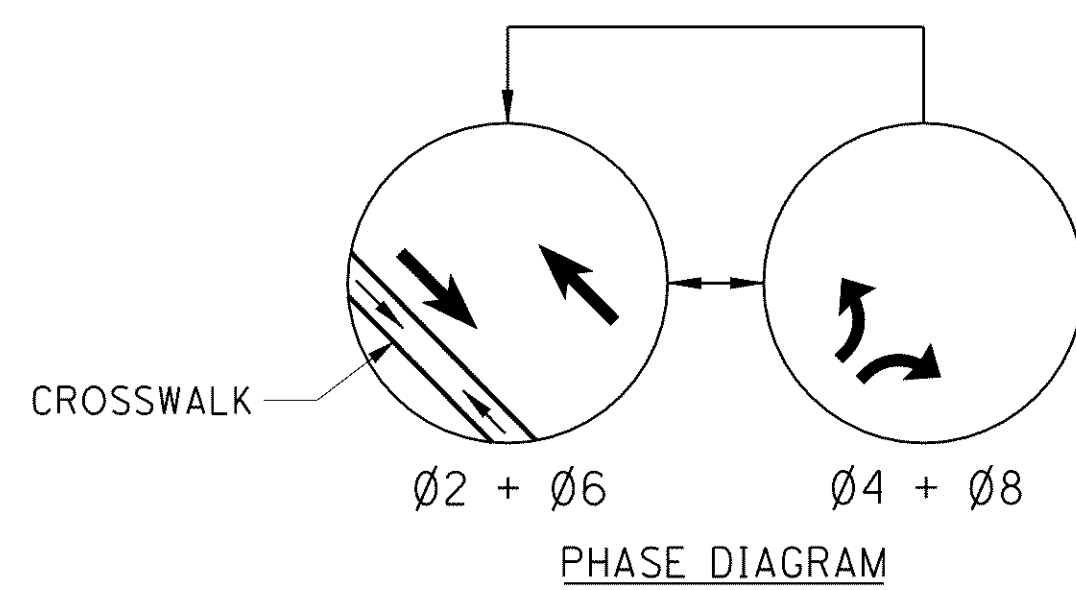
POWER SUPPLY FOR TEMPORARY SIGNAL

ELECTRICAL POWER SHALL BE OBTAINED FROM THE LOCAL POWER COMPANY. THE CONTRACTOR SHALL COORDINATE WITH THE POWER COMPANY TO DETERMINE A SUITABLE LOCATION FOR THE POWER SOURCE. THE CONTRACTOR SHALL ESTABLISH AN ACCOUNT SET UP IN THE CONTRACTOR'S NAME. THE CONTACT INFORMATION IS AS FOLLOWS:

FIRST ENERGY
6896 MILLER ROAD
BRECKSVILLE, OHIO 44141
PHONE: (440) 546-8748
CONTACT: FRANK DIBBS



TEMPORARY PAVEMENT CONSTRUCTED IN STAGE 3 PHASE B.



SIGNAL TIMING CHART

| | PHASE 2 & 6 | PHASE 4 & 8 |
|--------------|-------------|-------------|
| WALK | 7 | |
| FDW | 25 | |
| MINI GREEN | | 10 |
| MAX GREEN | 37 | 22 |
| YELLOW | 5.7 | 4.3 |
| ALL RED | 1 | 1 |
| PASSAGE TIME | | 4 |

G:\Project\lak\13486\mot\sheet\13486MM020.dgn 6/24/2008 8:54:05 AM jmaderia