

FOR MAINTENANCE OF TRAFFIC PHASING  
PLANS FOR STAGE 1 SEE SHEETS 109 TO 130

FOR TYPICAL SECTIONS OF TEMPORARY  
PAVEMENT SEE SHEET 161

 TEMPORARY PAVEMENT

EX CB  
STA. 412+06, 1.4' RT  
GRATE ELEV. = 617.68  
INV. 8" NE 611.68  
INV. 8" SE 611.80  
INV. 15" S 611.28

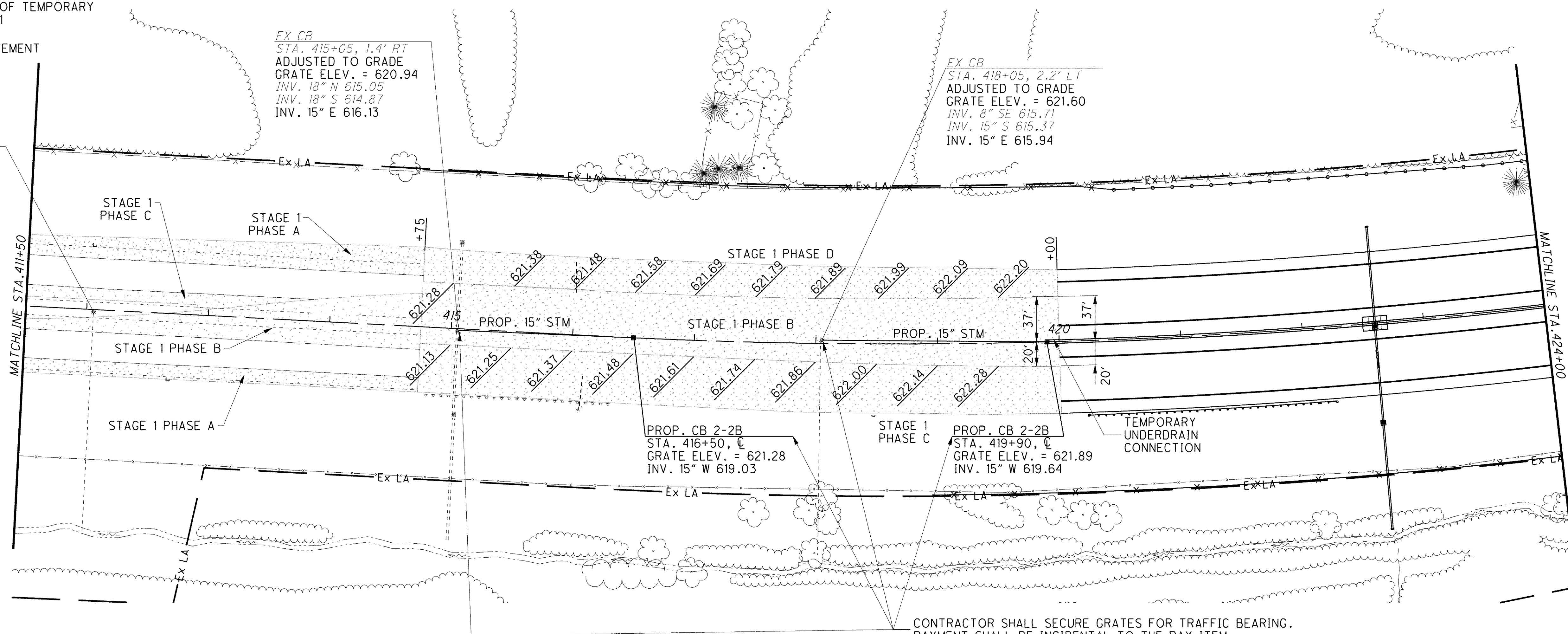
EX CB  
STA. 415+05, 1.4' RT  
ADJUSTED TO GRADE  
GRATE ELEV. = 620.94  
INV. 18" N 615.05  
INV. 18" S 614.87  
INV. 15" E 616.13

EX CB  
STA. 418+05, 2.2' LT  
ADJUSTED TO GRADE  
GRATE ELEV. = 621.60  
INV. 8" SE 615.71  
INV. 15" S 615.37  
INV. 15" E 615.94

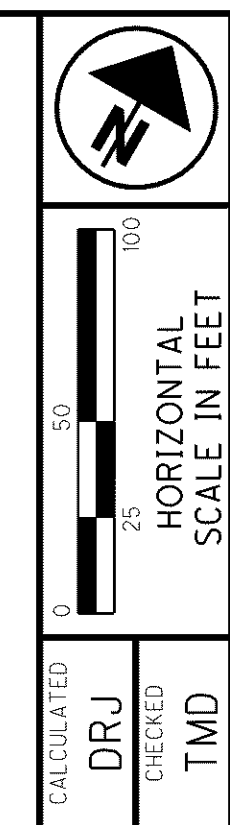
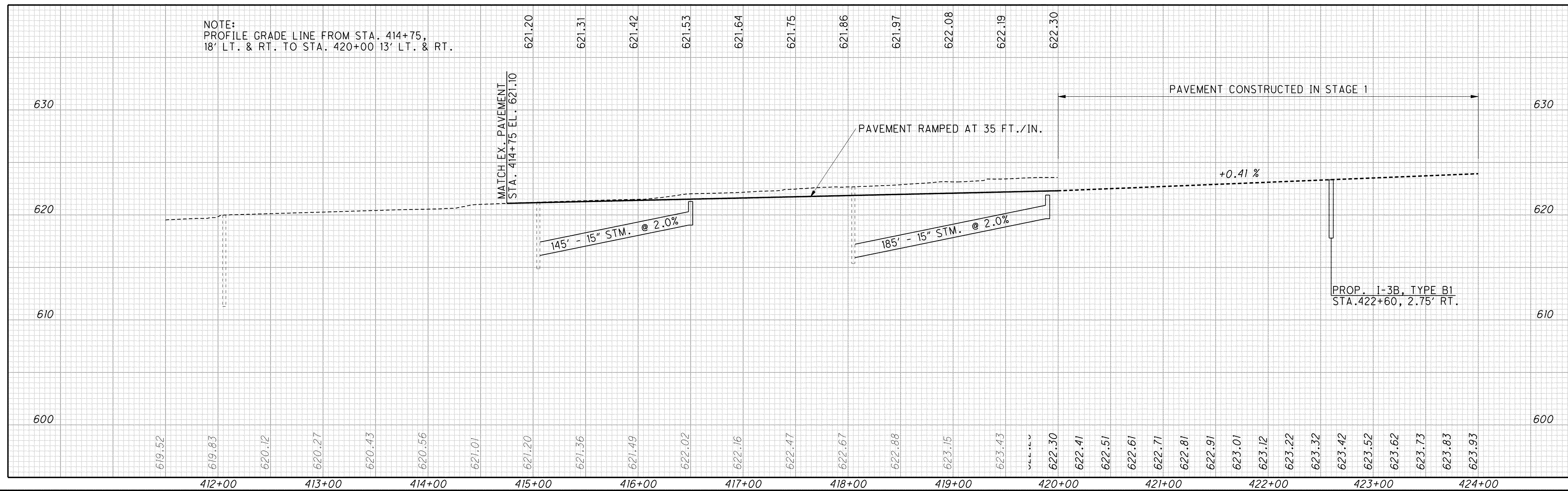
PROP. CB 2-2B  
STA. 416+50, C  
GRATE ELEV. = 621.28  
INV. 15" W 619.03

PROP. CB 2-2B  
STA. 419+90, C  
GRATE ELEV. = 621.89  
INV. 15" W 619.64

CONTRACTOR SHALL SECURE GRATES FOR TRAFFIC BEARING.  
PAYMENT SHALL BE INCIDENTAL TO THE PAY ITEM.



NOTE:  
PROFILE GRADE LINE FROM STA. 414+75,  
18' LT. & RT. TO STA. 420+00 13' LT. & RT.



CALCULATED DRJ TMD  
CHECKED TMD  
**MAINTENANCE OF TRAFFIC PLAN AND PROFILE  
STAGE 1 TEMPORARY PAVEMENT TIE-IN**

**LAK-2-3.32**

162  
1679

g:\project\lak\13486\mot\sheet\13486MM02.dgn 6/23/2008 11:16:18 AM jmodera