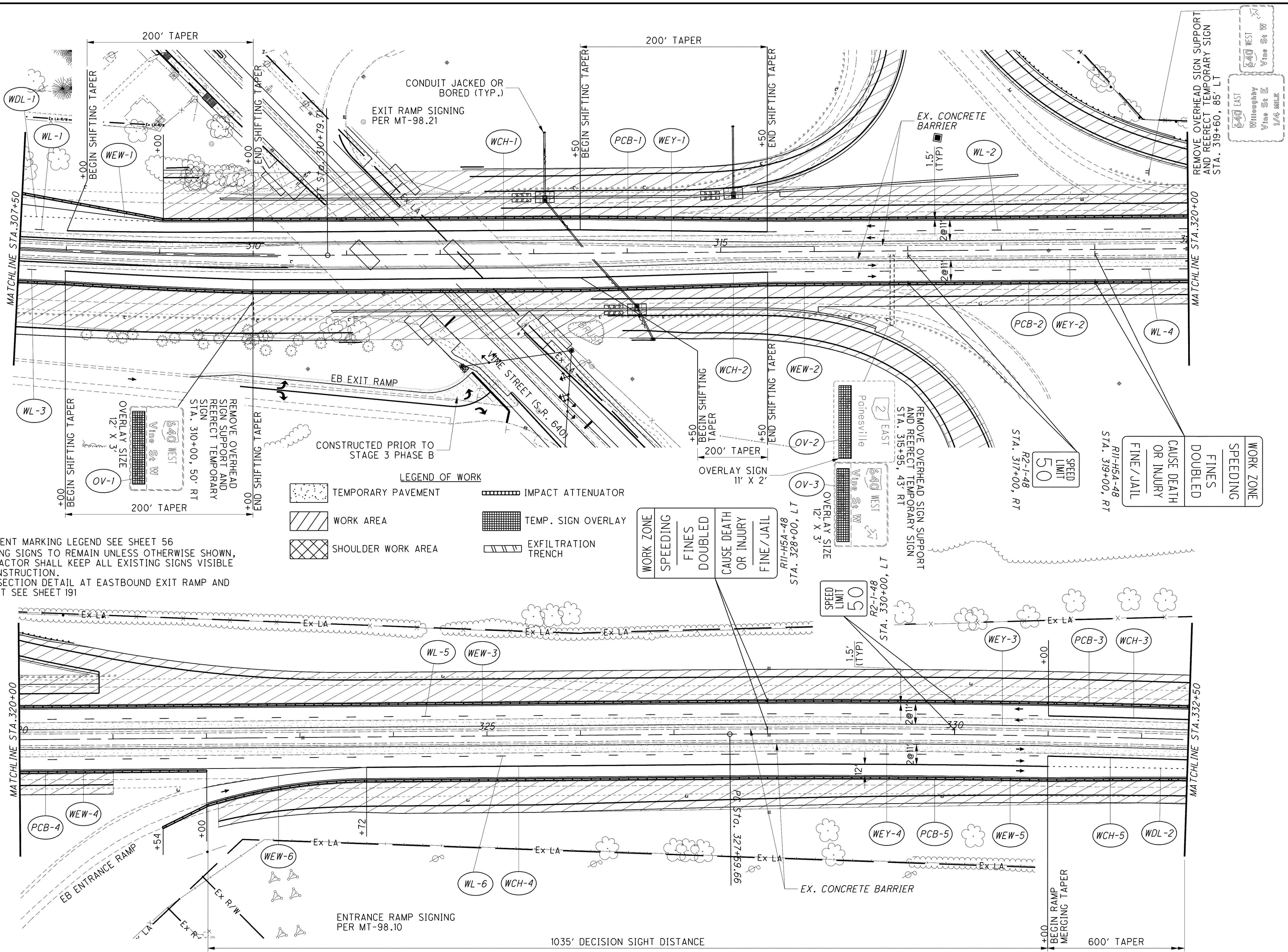


o:\project\lak\13486\mot\sheet\13486MPS3-B4.dgn 6/23/2008 11:09:27 AM jmoderia



- NOTE: 1. FOR PAVEMENT MARKING LEGEND SEE SHEET 56  
 2. ALL EXISTING SIGNS TO REMAIN UNLESS OTHERWISE SHOWN, THE CONTRACTOR SHALL KEEP ALL EXISTING SIGNS VISIBLE DURING CONSTRUCTION.  
 3. FOR INTERSECTION DETAIL AT EASTBOUND EXIT RAMP AND VINE STREET SEE SHEET 191

**LEGEND OF WORK**

	TEMPORARY PAVEMENT		IMPACT ATTENUATOR
	WORK AREA		TEMP. SIGN OVERLAY
	SHOULDER WORK AREA		EXFILTRATION TRENCH

WORK ZONE
SPEEDING
FINES DOUBLED
CAUSE DEATH OR INJURY
FINE / JAIL

RI-H54-48  
 STA. 328+00, LT

WORK ZONE
SPEEDING
FINES DOUBLED
CAUSE DEATH OR INJURY
FINE / JAIL

RI-H54-48  
 STA. 319+00, RT

SPEED LIMIT
50

R2-1-48  
 STA. 330+00, LT

CALCULATED DRJ  
 CHECKED TMD

0 50 100  
 HORIZONTAL SCALE IN FEET

640 EAST  
 Winthobly Vine St E  
 1/4 MILE

640 WEST  
 Vine St W