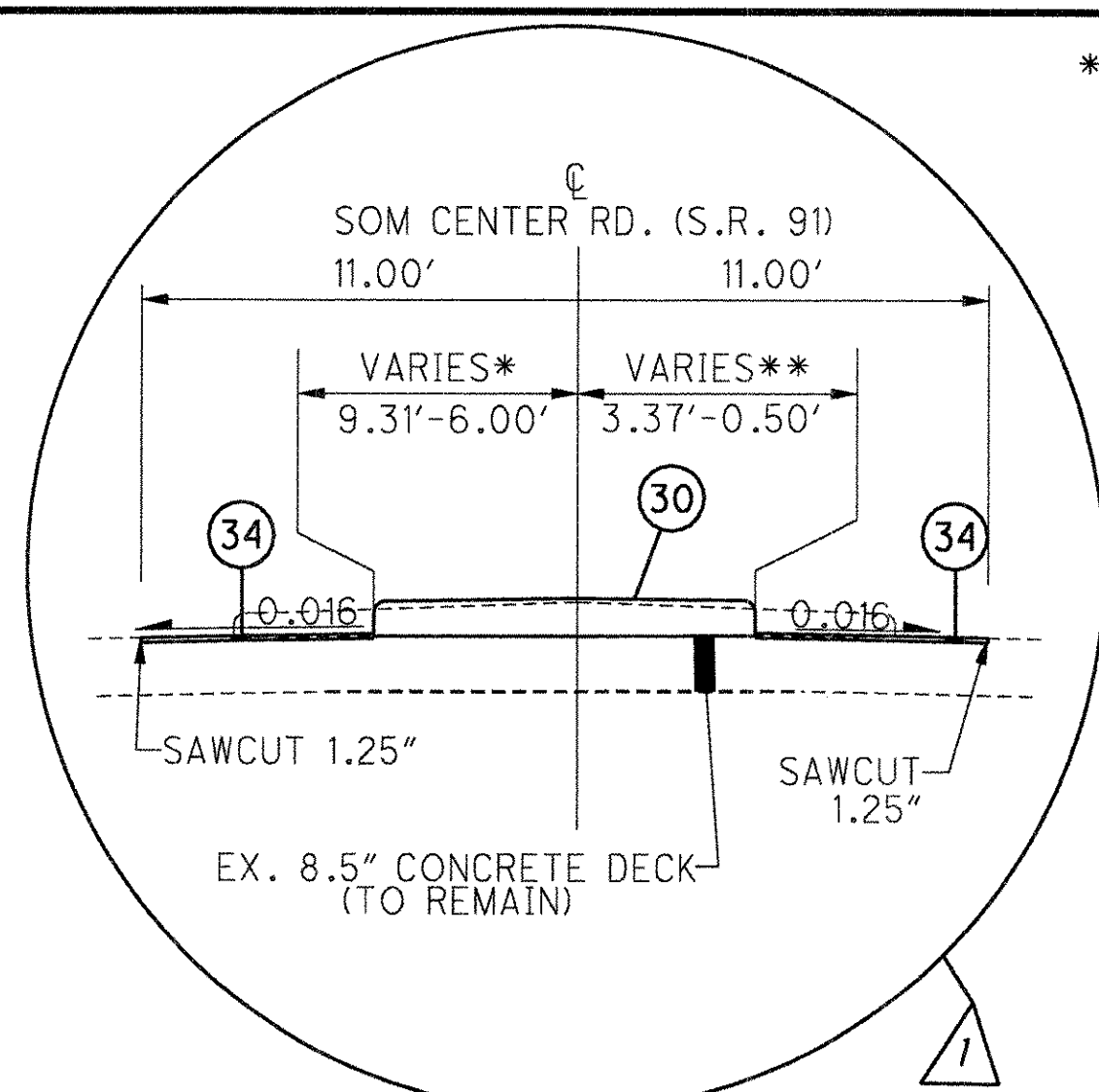
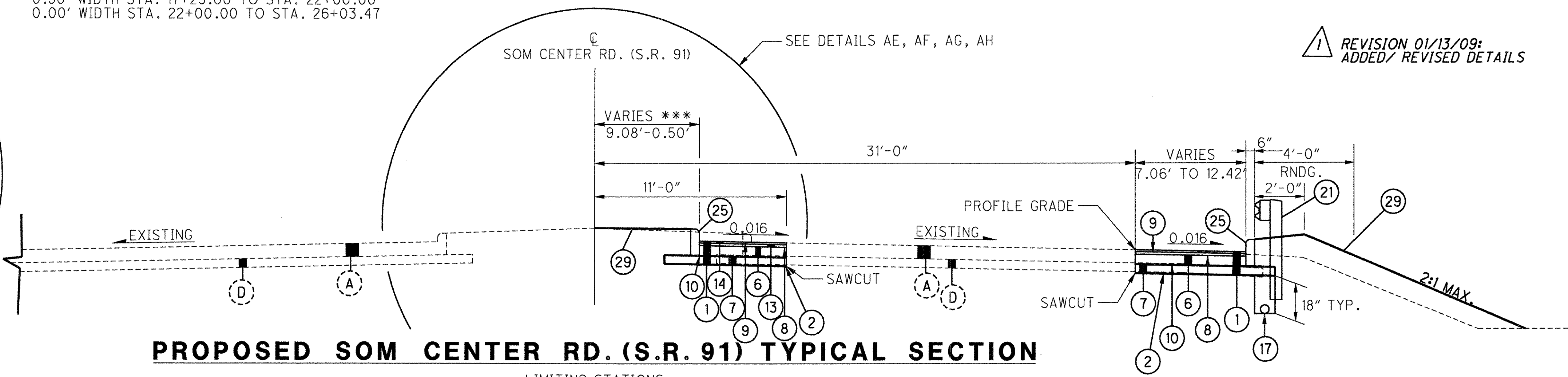


*** WIDTH VARIES 9.08' TO 0.50' STA. 15+01.00 TO STA. 17+25.00
 0.50' WIDTH STA. 17+25.00 TO STA. 22+00.00
 0.00' WIDTH STA. 22+00.00 TO STA. 26+03.47

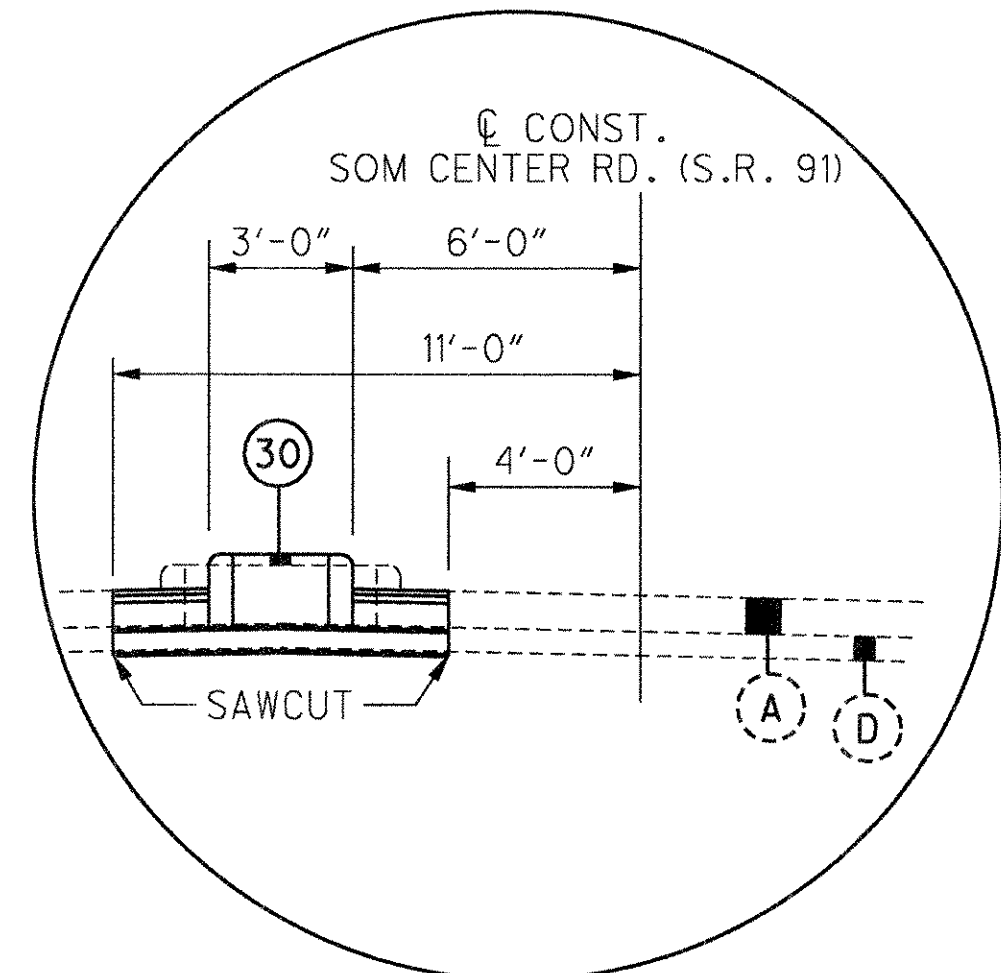
REVISION 01/13/09:
 ADDED/ REVISED DETAILS



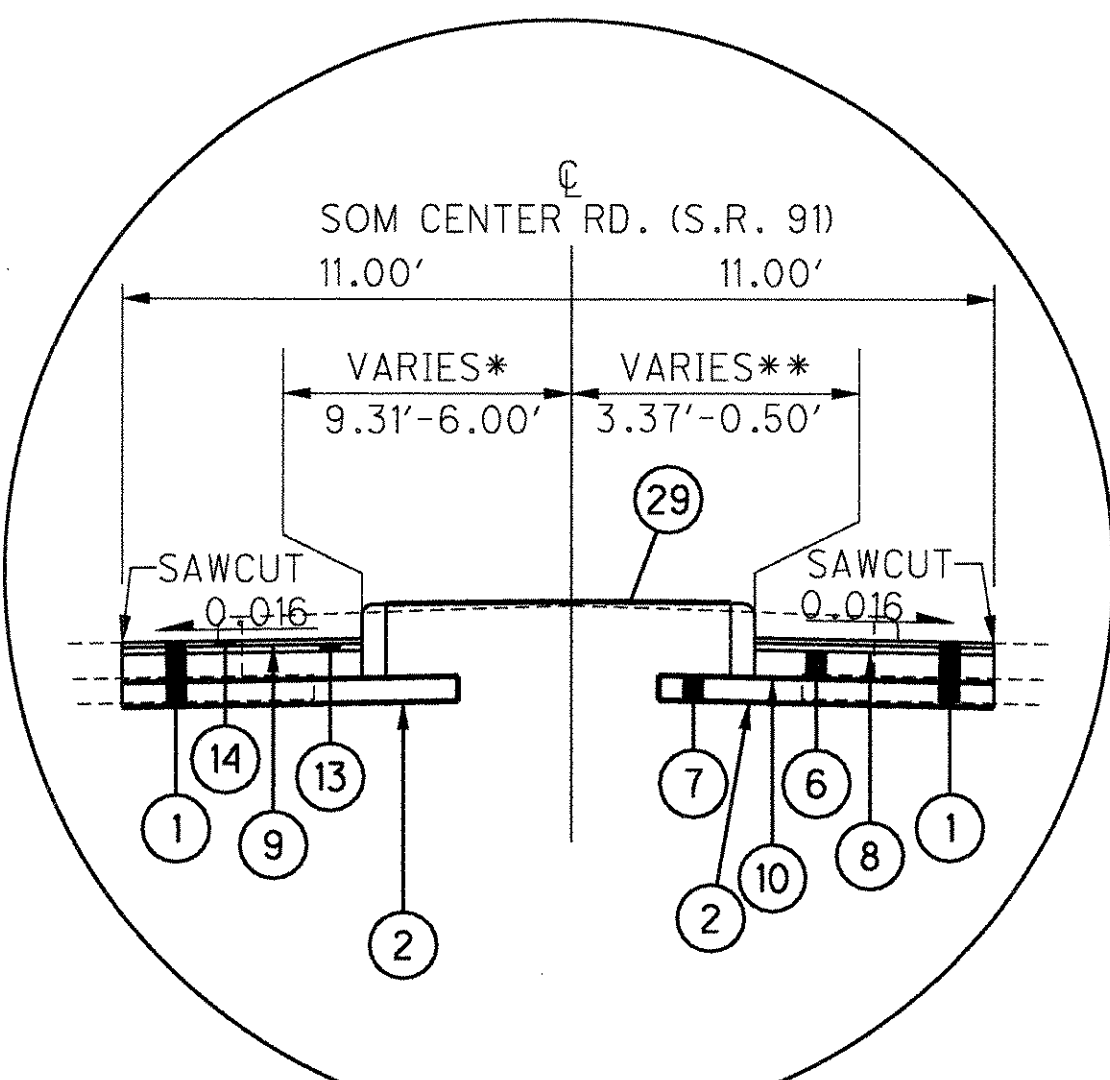
DETAIL AH
 LIMITING STATIONS
 STA. 19+52.82 TO 20+96.30



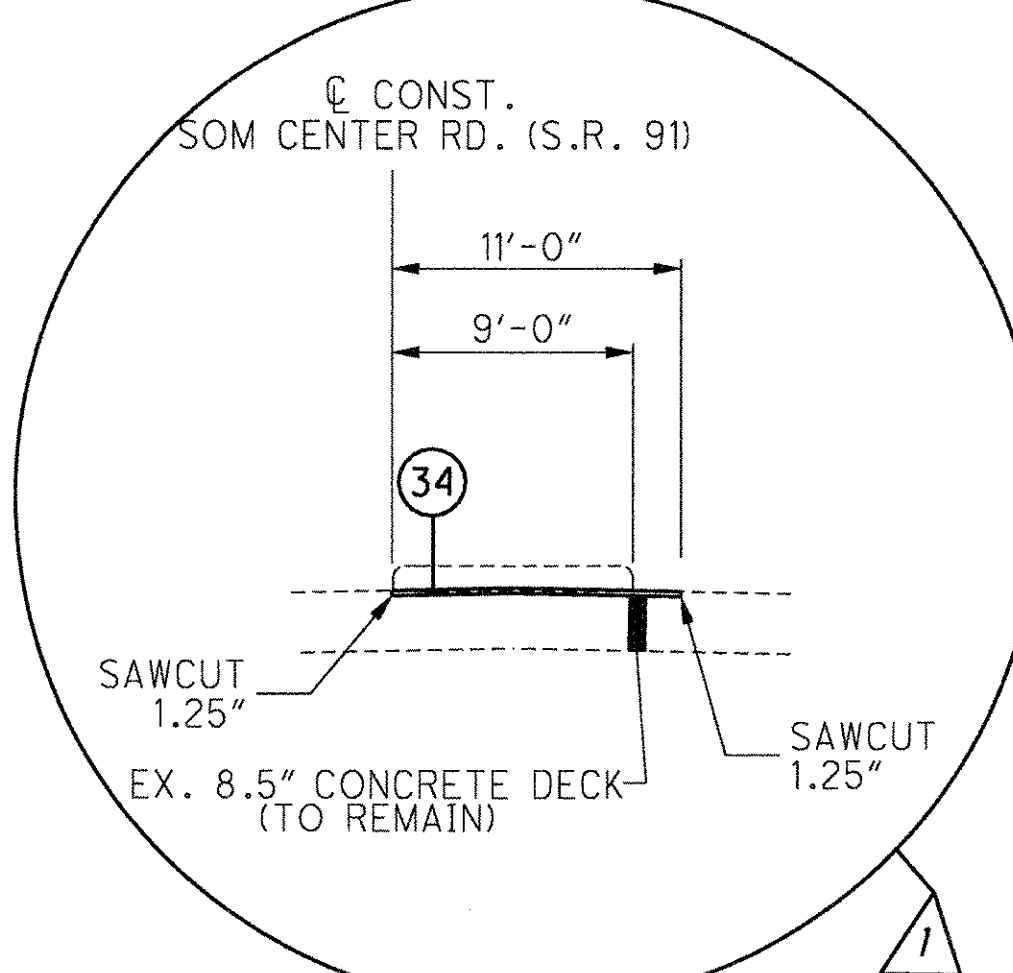
PROPOSED SOM CENTER RD. (S.R. 91) TYPICAL SECTION
 LIMITING STATIONS
 STA. 15+01.00 TO STA. 26+75.00 = 1,174 LIN. FT.



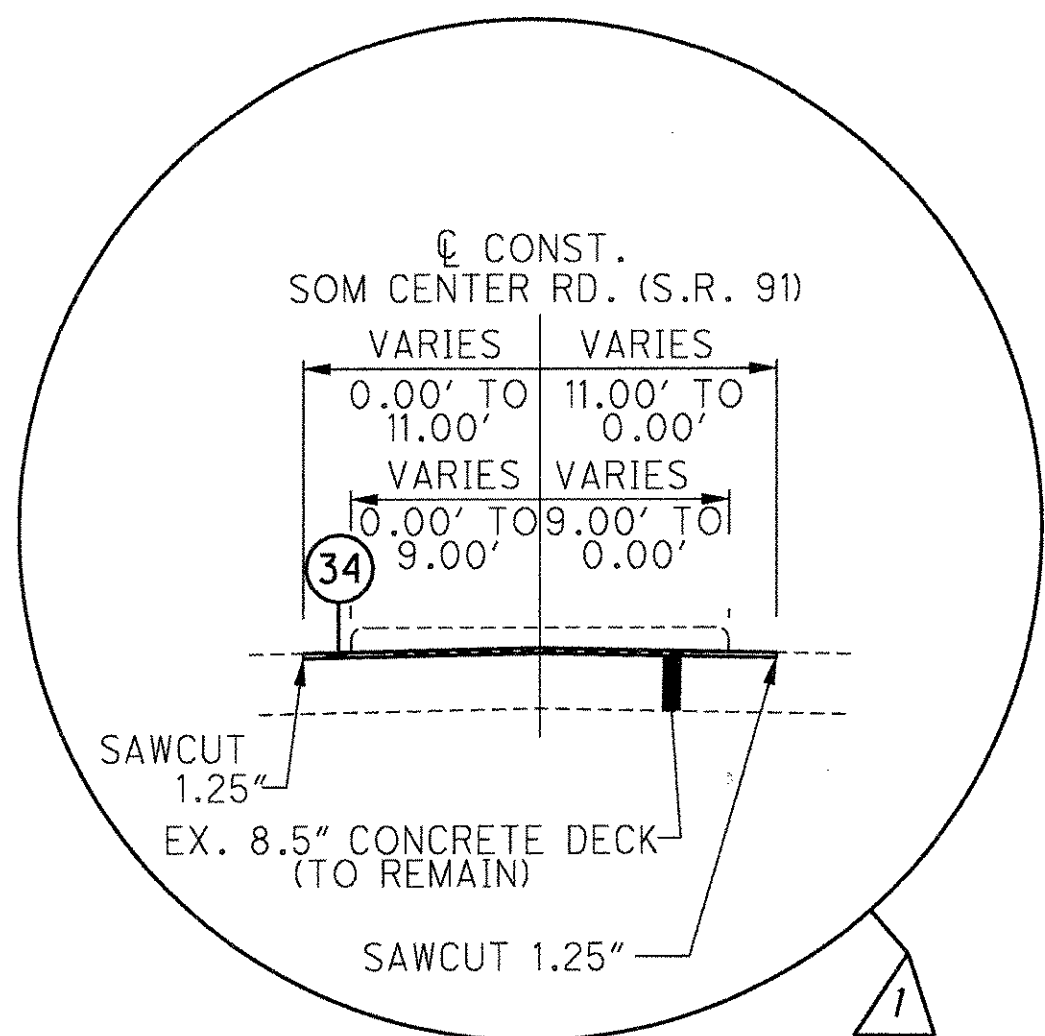
DETAIL AC
 LIMITING STATIONS
 STA. 31+00.00 TO STA. 33+95.00



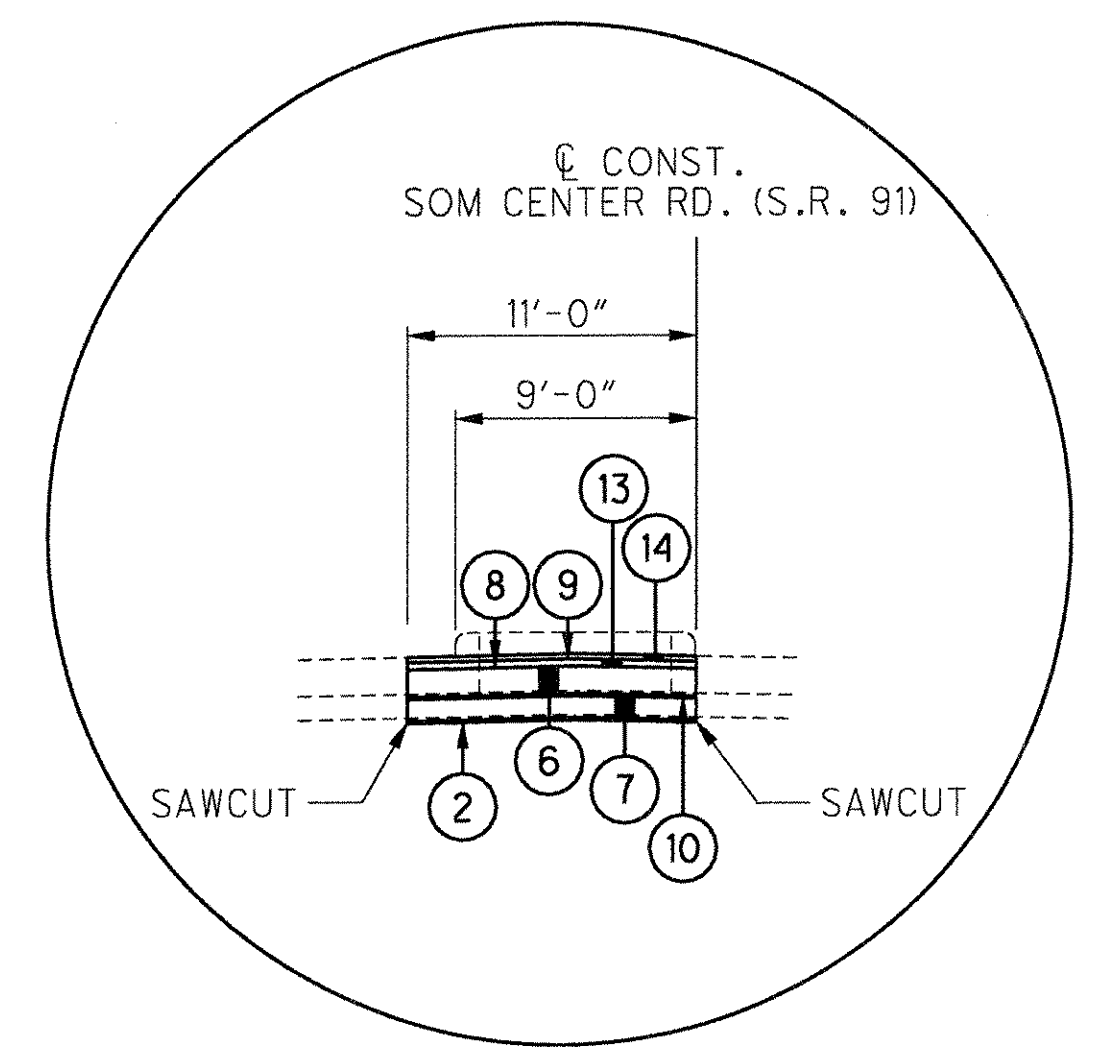
DETAIL AE
 LIMITING STATIONS
 16+50.00 TO STA. 19+52.82
 20+96.30 TO 22+00.00



DETAIL AF
 LIMITING STATIONS
 STA. 23+25.00 TO STA. 23+75.00

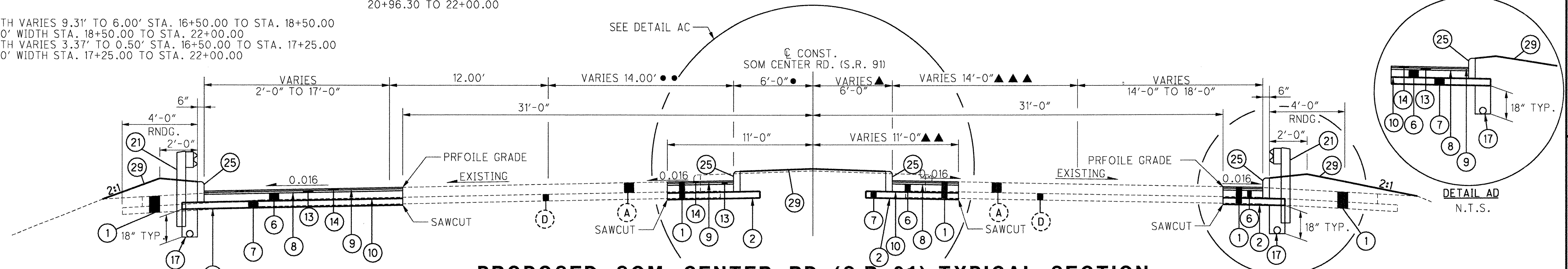


DETAIL AG
 LIMITING STATIONS
 STA. 23+75.00 TO STA. 24+85.00



DETAIL H
 LIMITING STATIONS
 STA. 26+39.51 TO STA. 26+75.00

* WIDTH VARIES 9.31' TO 6.00' STA. 16+50.00 TO STA. 18+50.00
 6.00' WIDTH STA. 18+50.00 TO STA. 22+00.00
 ** WIDTH VARIES 3.37' TO 0.50' STA. 16+50.00 TO STA. 17+25.00
 0.50' WIDTH STA. 17+25.00 TO STA. 22+00.00



PROPOSED SOM CENTER RD. (S.R. 91) TYPICAL SECTION
 LIMITING STATIONS
 STA. 26+75.00 TO STA. 34+32.76 = 757.76 LIN. FT.

● 0.00' WIDTH STA. 26+75.00 TO STA. 28+04.00
 6.00' WIDTH STA. 28+04.00 TO STA. 30+00.00
 WIDTH VARIES 6.00' TO 9.00' STA. 30+00.00 TO STA. 31+00.00
 9.00' WIDTH STA. 31+00.00 TO STA. 33+76.50
 0.00' WIDTH STA. 33+76.50 TO STA. 34+32.76

●● 20.00' WIDTH STA. 26+75.00 TO STA. 28+04.00
 14.00' WIDTH STA. 28+04.00 TO STA. 30+00.00
 WIDTH VARIES 14.00' TO 11.00' STA. 30+00.00 TO STA. 31+00.00
 11.00' WIDTH STA. 31+00.00 TO STA. 33+76.50
 20.00' WIDTH STA. 33+76.50 TO STA. 34+32.76

▲ 0.00' WIDTH STA. 26+75.00 TO STA. 28+04.00
 6.00' WIDTH STA. 28+04.00 TO STA. 30+00.00
 WIDTH VARIES 6.00' RT. TO 4.00' LT. STA. 30+00.00 TO STA. 31+00.00
 4.00' LT. WIDTH STA. 31+00.00 TO STA. 33+76.50
 0.00' WIDTH STA. 33+76.50 TO STA. 34+32.76

▲▲ 0.00' WIDTH STA. 26+75.00 TO STA. 27+69.00
 11.00' WIDTH STA. 27+69.00 TO STA. 30+00.00
 WIDTH VARIES 11.00' RT. TO 4.00' LT. STA. 30+00.00 TO STA. 31+75.00
 4.00' LT. WIDTH STA. 31+75.00 TO STA. 33+95.00
 0.00' WIDTH STA. 33+95.00 TO STA. 34+32.76

▲▲▲ 20.00' WIDTH STA. 26+75.00 TO STA. 28+04.00
 14.00' WIDTH STA. 28+04.00 TO STA. 30+00.00
 WIDTH VARIES 14.00' TO 24.00' STA. 30+00.00 TO STA. 31+00.00
 24.00' WIDTH STA. 31+00.00 TO STA. 34+32.76

FOR EXISTING LEGEND, SEE SHEET NO. 11
 FOR PROPOSED LEGEND, SEE SHEET NO. 14

NOTE "A": THE EXISTING PAVEMENT SHALL BE SAWCUT TO LOCATE A SOUND PAVEMENT EDGE AS PER SPEC 203.04 (E)

G:\Project\lak\13486\roadway\sheet\13486GY501.dgn 1/13/2009 4:14:22 PM PBerdis

TYPICAL SECTIONS - SIDE ROADS

LAK-2-3.32