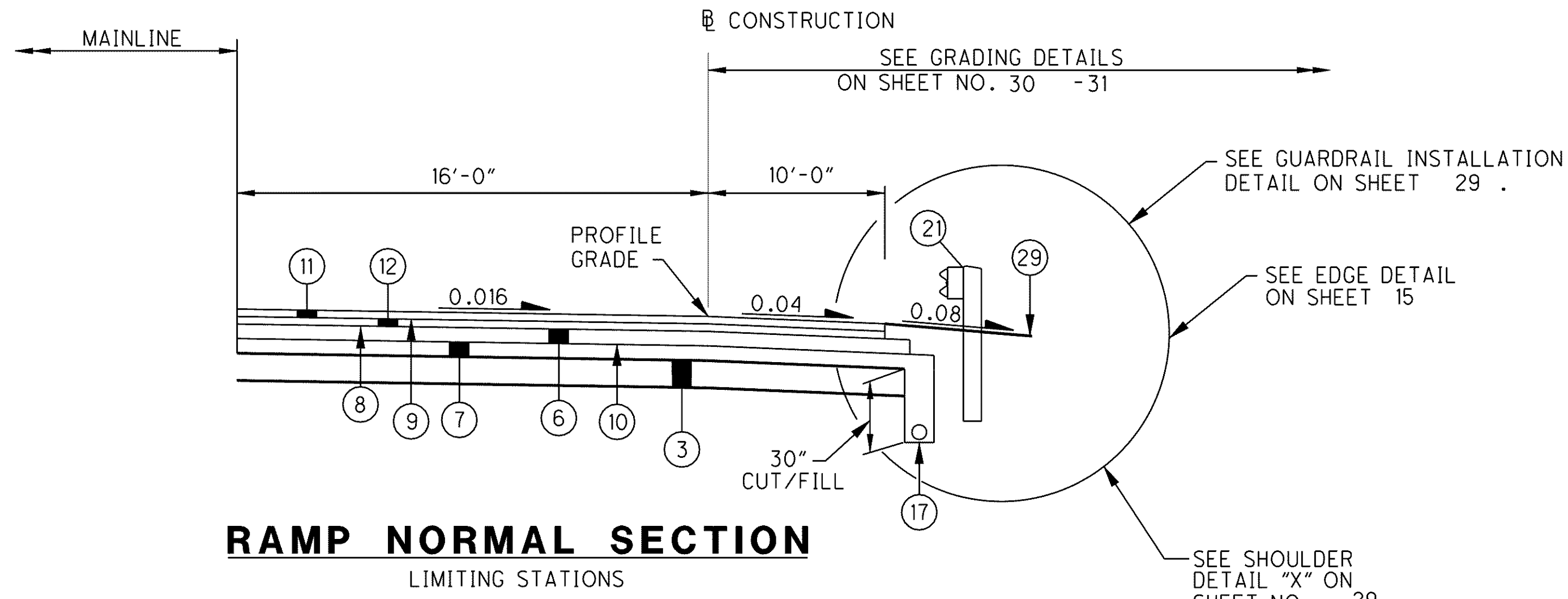


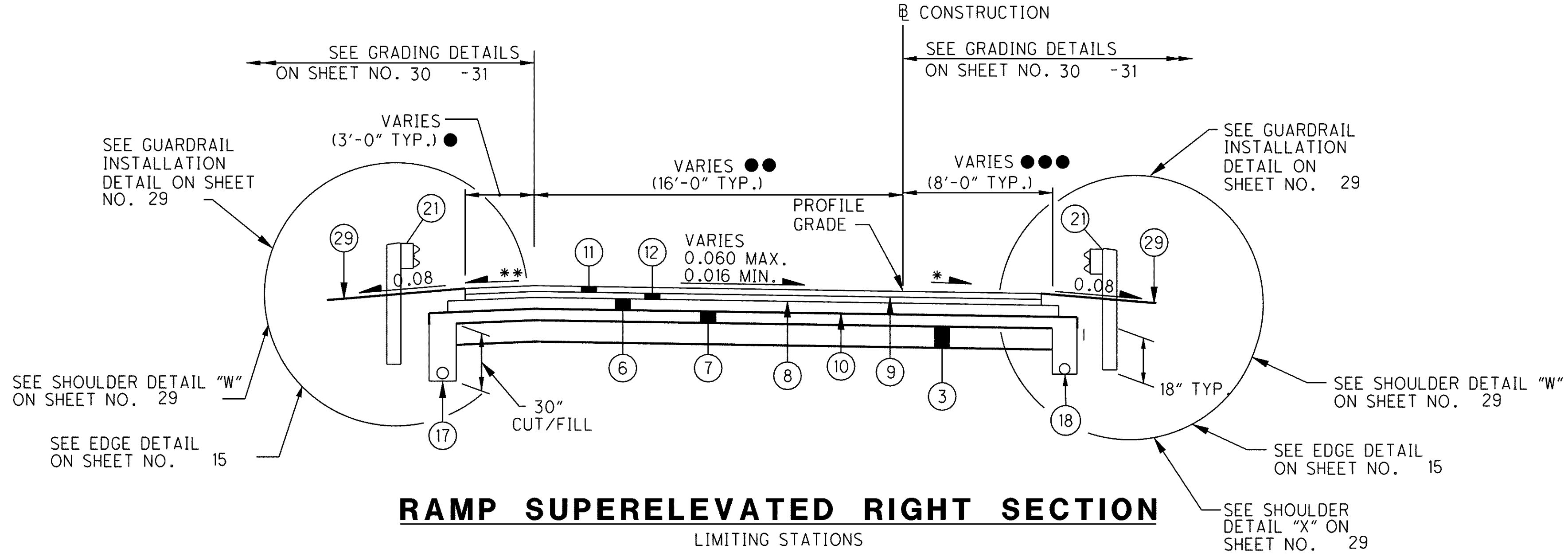
\\Akrn01\Data\Civil\2004108\00\13486\roadway\sheets\13486GY453.dgn 6/17/2008 8:52:24 AM mmoellendick



**RAMP NORMAL SECTION**

LIMITING STATIONS

S.R. 306 RAMP O  
 STA. 178+76.22 TO STA. 187+78.01 = 901.79 LIN. FT.



**RAMP SUPERELEVATED RIGHT SECTION**

LIMITING STATIONS

S.R. 306 RAMP O  
 STA. 169+93.37 TO STA. 170+25.26 = INTERSECTION AREA, SEE DETAIL ON SHEET NO. 833.  
 STA. 170+25.26 TO STA. 178+76.22 = 850.96 LIN. FT.

- S.R. 306 RAMP O  
 6.00' WIDTH STA. 170+25.26 TO STA. 170+30.53  
 WIDTH VARIES 6.00' TO 4.00' STA. 170+30.53 TO STA. 170+40.53  
 4.00' WIDTH STA. 170+40.53 TO STA. 174+00.00  
 WIDTH VARIES 4.00' TO 3.00' STA. 174+00.00 TO STA. 174+50.00  
 3.00' WIDTH STA. 174+50.00 TO STA. 177+30.22  
 0.00' WIDTH STA. 177+30.22 TO 178+76.22
- S.R. 306 RAMP O  
 36.00' WIDTH STA. 170+25.26 TO STA. 173+00.00  
 WIDTH VARIES 36.00' TO 24.00' STA. 173+00.00 TO STA. 173+50.00  
 24.00' WIDTH STA. 173+50.00 TO STA. 174+00.00  
 WIDTH VARIES 24.00' TO 16.00' STA. 174+00.00 TO STA. 174+50.00  
 16.00' WIDTH STA. 174+50.00 TO STA. 178+76.22
- S.R. 306 RAMP O  
 12.00' WIDTH STA. 170+25.26 TO STA. 171+57.80  
 WIDTH VARIES 12.00' TO 10.00' STA. 171+57.80 TO STA. 171+97.80  
 10.00' WIDTH STA. 171+97.80 TO STA. 178+76.22

\* 0.04 OR RATE OF PAVEMENT SLOPE IS GREATER.  
 \*\* FOR HIGH SIDE SHOULDER SLOPES, SEE SHOULDER DETAIL "Z" ON SHEET 29  
 FOR EXISTING LEGEND, SEE SHEET 11  
 FOR PROPOSED LEGEND, SEE SHEET 14