

NOTES

**GENERAL:** This insert details the Barrier Transition, to connect existing NJ Concrete Barrier (safety shape) to a new run of Single Slope Concrete Barrier at locations shown on the plans. For NJ barrier shape and other details see the respective plan insert sheets. For Single Slope barrier details, see SCD RM-4.3 (RM-4.5 for Type D).

**ADJACENT CONCRETE BARRIER RUNS:** Remove any tapered end sections, Impact attenuators, or other guardrail hardware from existing barrier end. The barrier to barrier transition is not intended to be used at transition sections (those shown on SCD RM-4.4), Inlets, or on Type C or CI Barrier. If proposed adjacent single slope barrier is Type A or A1, the Barrier Transition should contain horizontal reinforcing steel similar to that required in the respective single slope barrier. Reinforcement is not shown and should be detailed separately. The adjacent single slope end should be terminated with a reinforced End Anchor as detailed on the SCDs.

**BARRIER FACE TRANSITION:** To prevent vehicle snagging, a smooth transition from the safety shape face to the single slope face is made over a 20' length. The actual shape of the Transition is dependent on both the adjacent NJ barrier and the single slope barrier Types, as detailed on the plans. The contractor and Engineer will agree on a construction method to ensure a smooth barrier face.

**MATERIALS:** Materials are same for those shown on RM-4.3 and RM-4.5, except that cast-in-place is the only acceptable method. Edges may be chamfered or radiused as shown on those drawings.

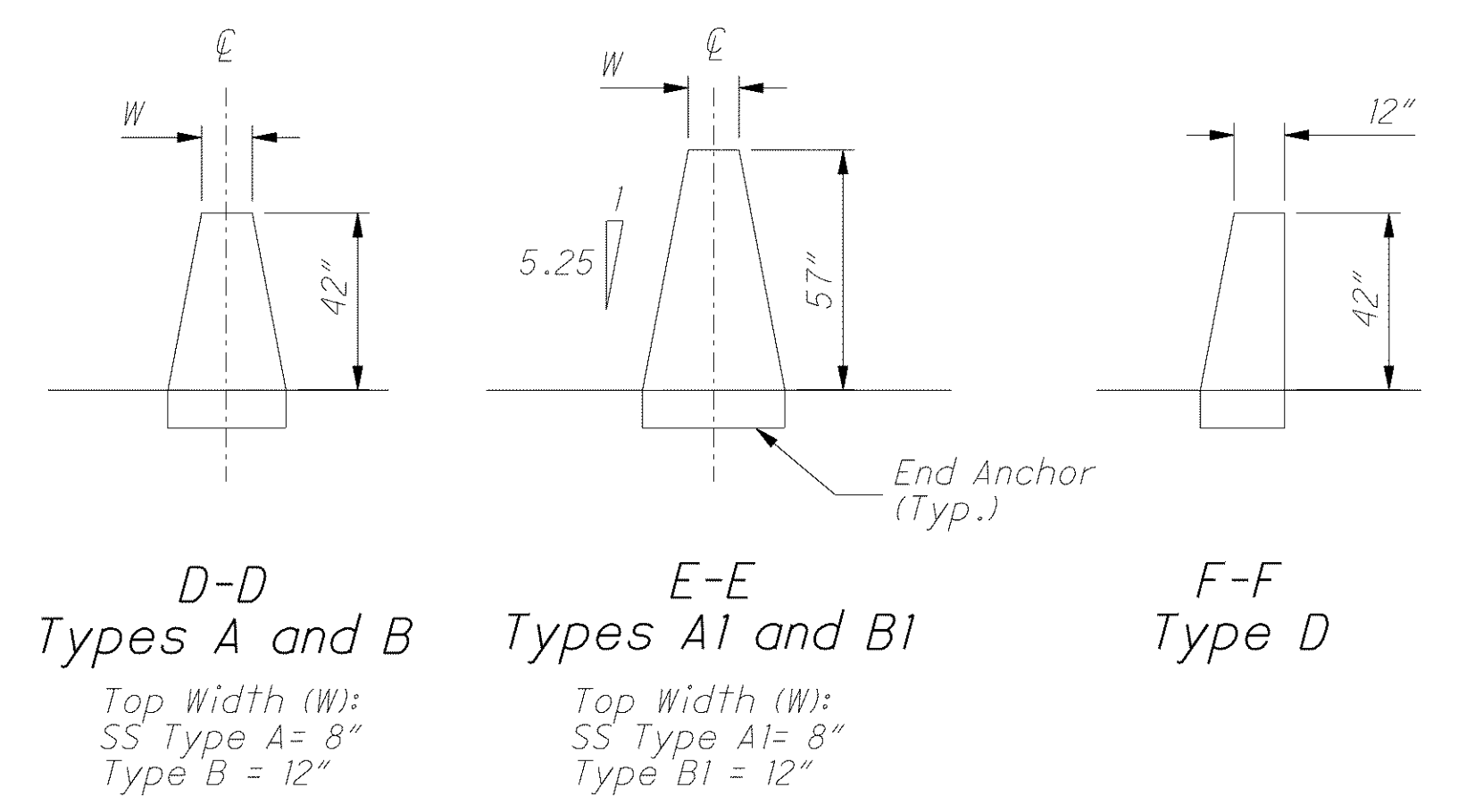
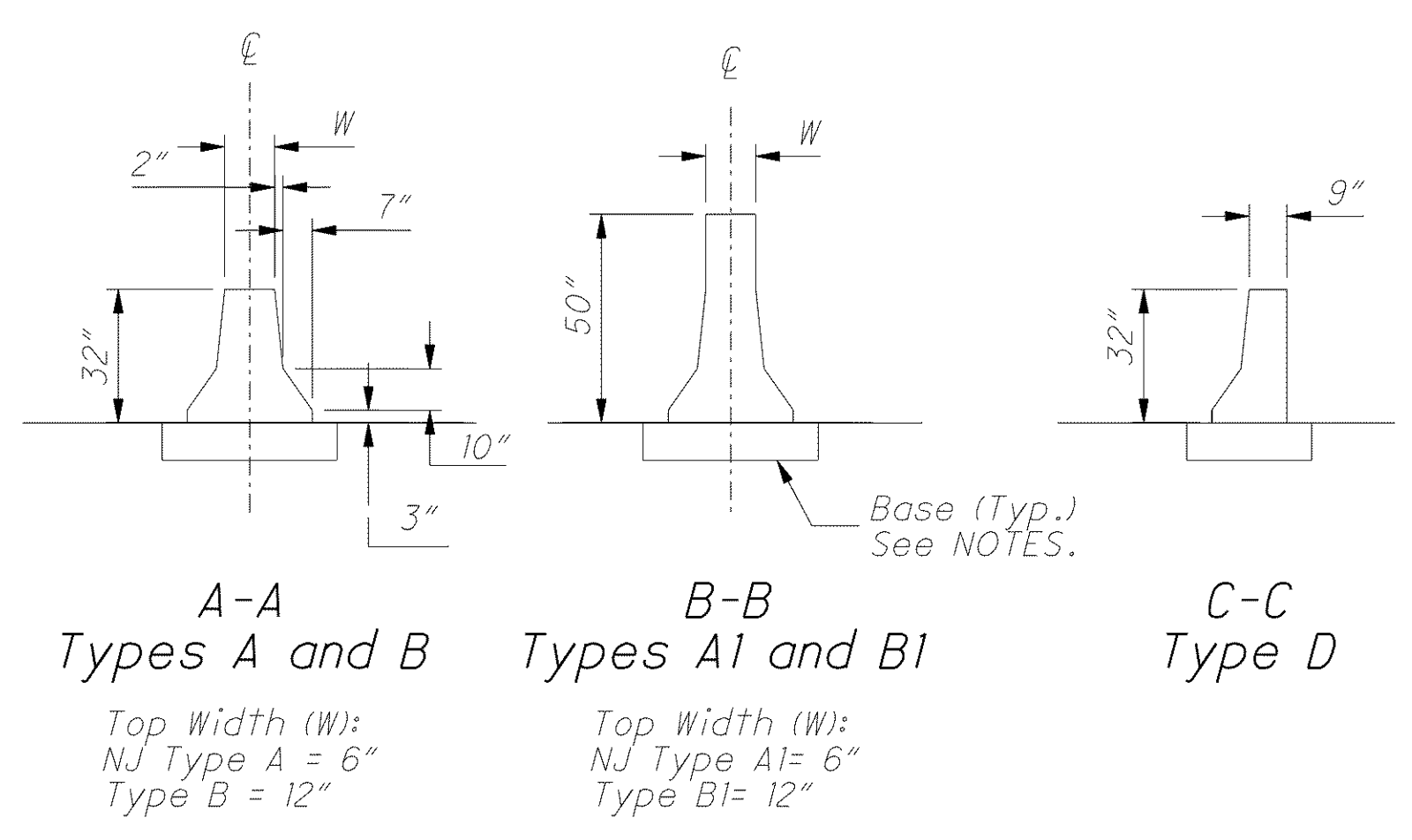
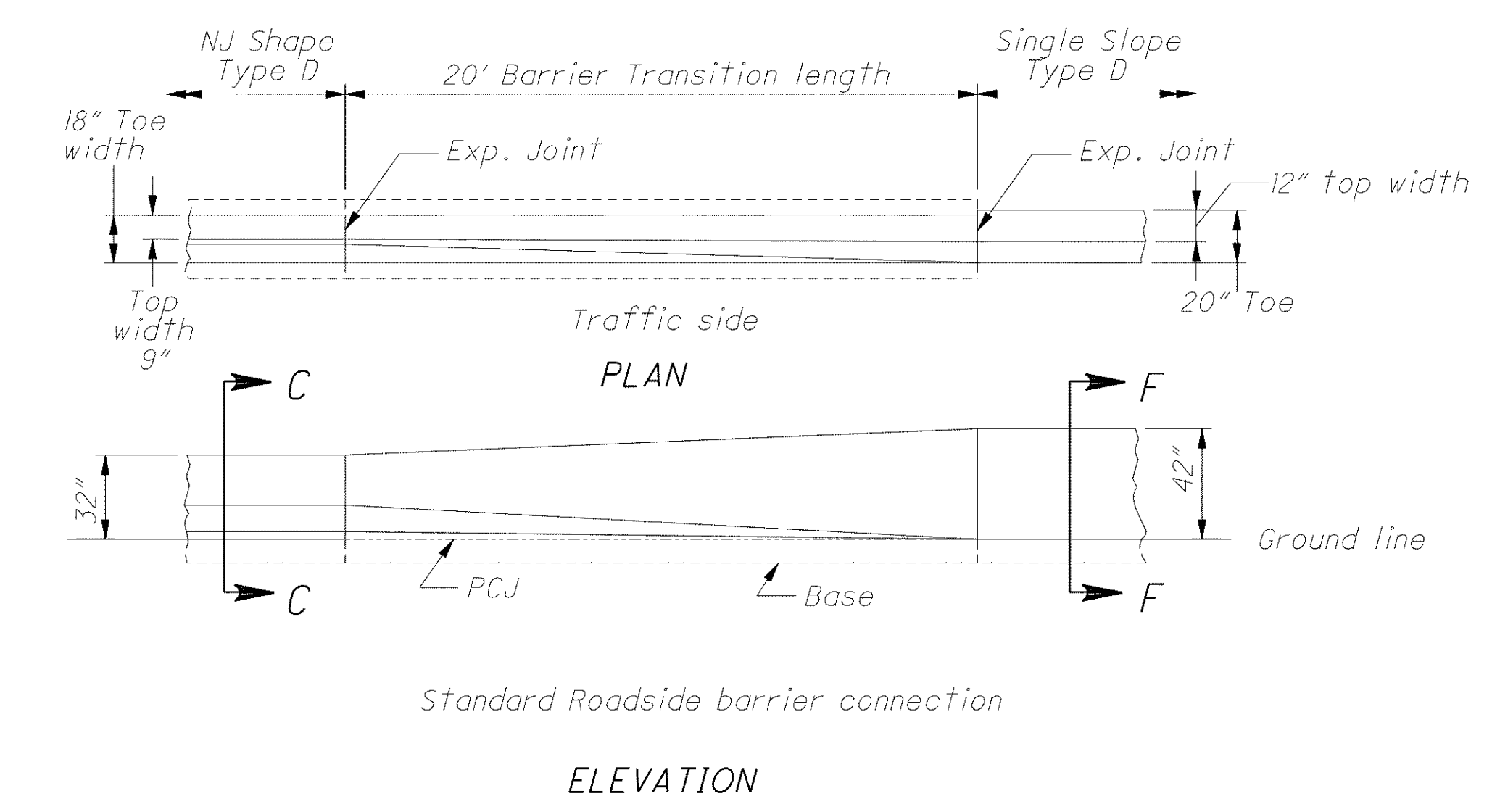
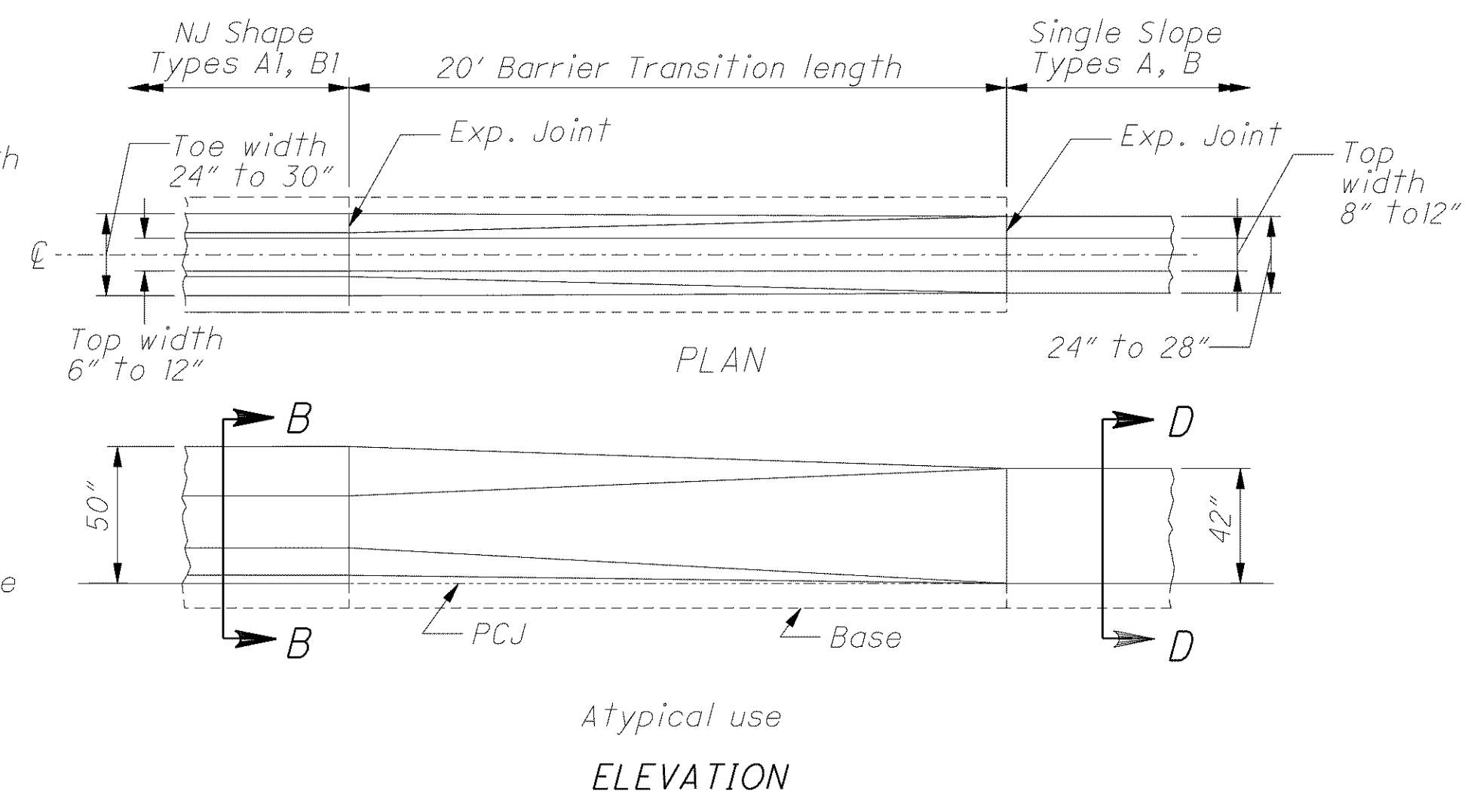
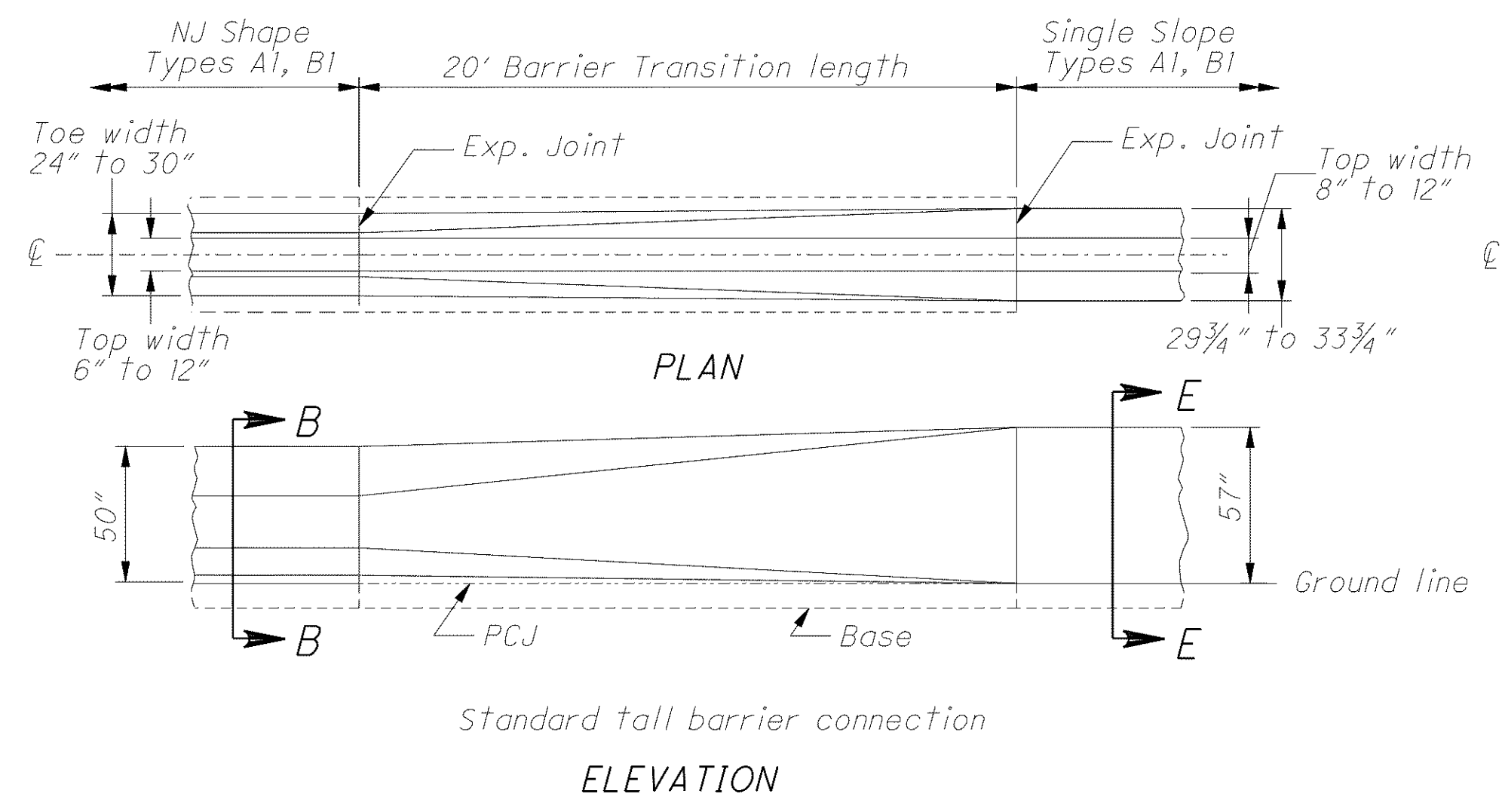
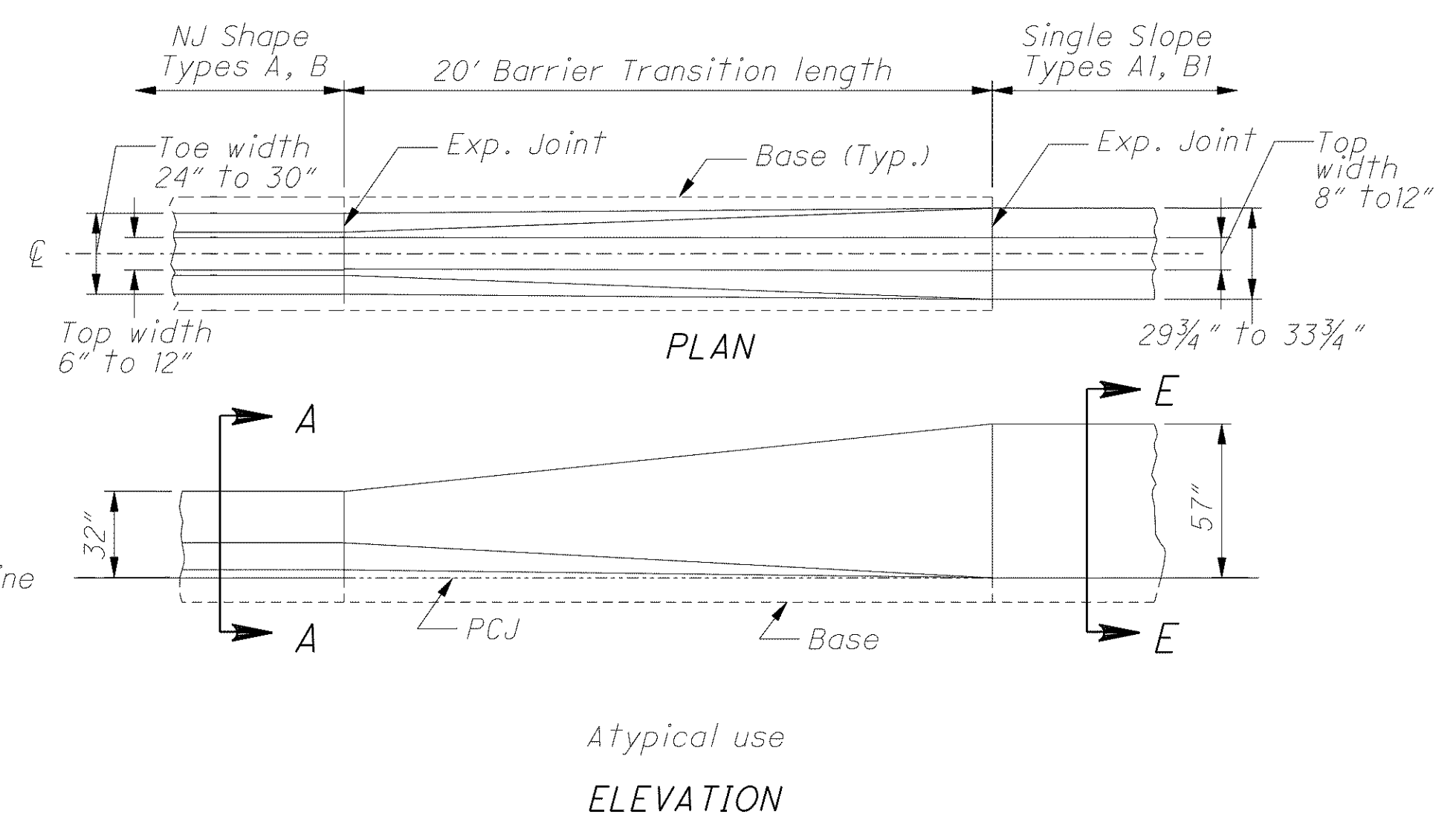
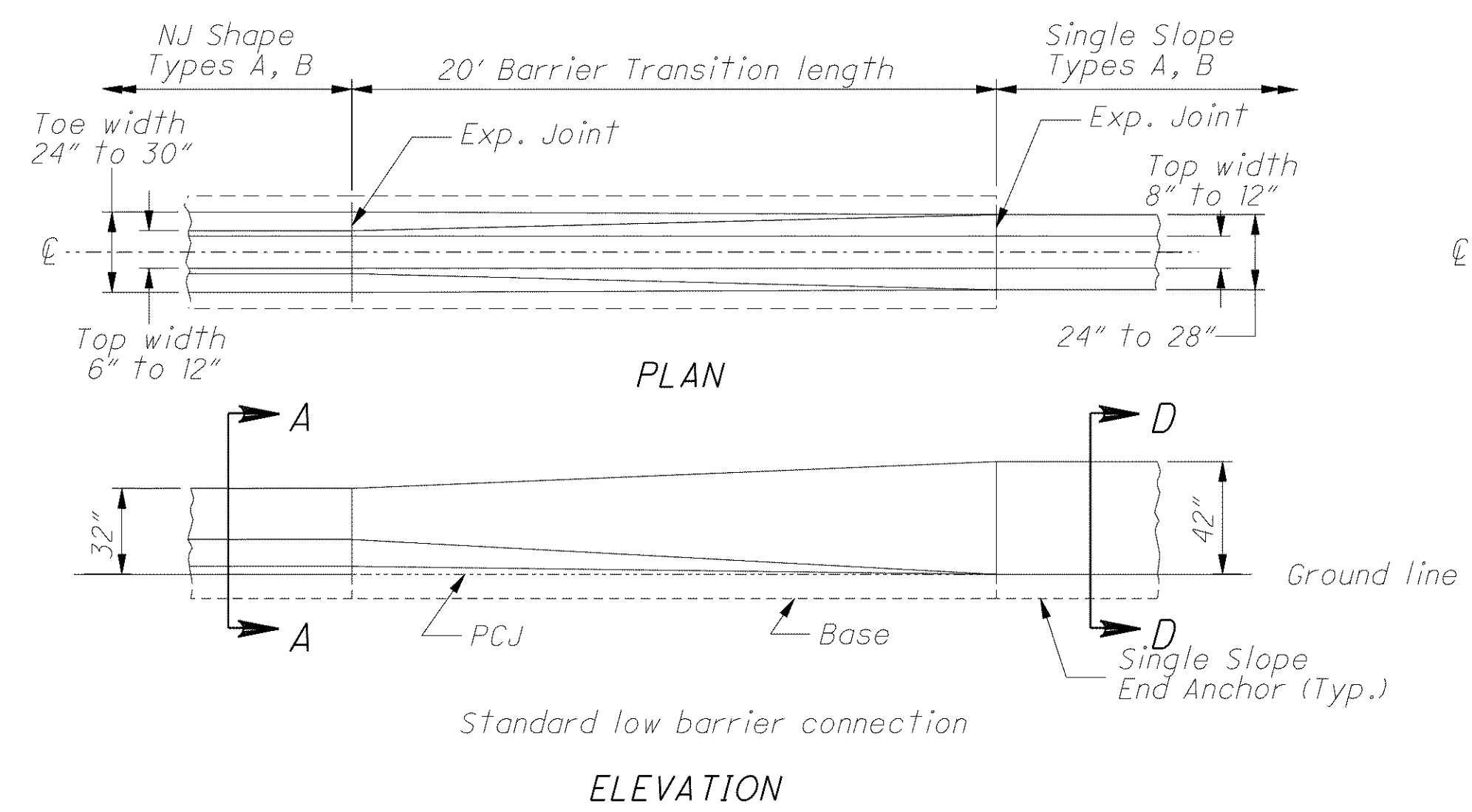
**CONCRETE BASE:** Construct base as shown on the NJ shape insert sheets, including the methods detailing the footing joint, Permissible Construction Joint (PCJ), and Dowelling requirements. The width of the base matches the existing NJ barrier.

**JOINTS:** Construct joints as shown on respective barrier drawings.

**RACEWAYS:** When specified, place raceway(s) to match raceway elevation in adjoining segments. Place to obtain maximum concrete cover.

**METRIC UNITS:** Refer to respective barrier drawings or inserts for metric dimensions.

**PAYMENT:** This Barrier Transition shall include all material and labor needed to construct this 20' section, including any raceways, reinforcing steel, dowels and other necessary incidentals. Payment shall be made at the unit price for Item 622 - Barrier Transition, Each.



**NJ SHAPE SECTIONS**  
See Plan Insert sheets for specific NJ Shape Concrete barrier details.

**SINGLE SLOPE SECTIONS**  
See SCD RM-4.3 and RM-4.5 for specific Single Slope concrete barrier details.

C:\Project\lak\13486\roadway\sheets\13486GYP09.dgn 6/24/2008 10:03:56 AM jmoder1a