



150
300
HORIZONTAL
SCALE IN FEET

CALCULATED
A.G.H.
CHECKED
P.S.B.

**SCHEMATIC PLAN
SR 306 INTERCHANGE**

LAK-2-3.32

SR 306 RAMP O CURVE DATA

P.I. STA. 175+11.42
 $\Delta = 27^\circ 28' 56''$ (LT)
 $Dc = 4^\circ 00' 00''$
 $R = 1,432.39'$
 $T = 350.27'$
 $L = 687.06'$
 $E = 41.21'$

P.I. STA. 180+80.71
 $\Delta = 2^\circ 42' 43''$ (RT)
 $Dc = 0^\circ 35' 00''$
 $R = 9,822.13'$
 $T = 232.49'$
 $L = 464.89'$
 $E = 2.75'$

P.I. STA. 185+45.60
 $\Delta = 2^\circ 42' 43''$ (LT)
 $Dc = 0^\circ 35' 00''$
 $R = 9,822.13'$
 $T = 232.49'$
 $L = 464.89'$
 $E = 2.75'$

SR 306 RAMP I CURVE DATA

P.I. STA. 61+88.22
 $\Delta = 41^\circ 37' 53''$ (LT)
 $Dc = 5^\circ 30' 00''$
 $R = 1,041.740'$
 $\theta =$
 $\Delta c = 36^\circ 07' 53''$ (LT)
 $Lc = 656.93'$
 $Es = 73.60'$

P.I. STA. 67+74.89
 $\Delta = 70^\circ 15' 34''$ (RT)
 $Dc = 18^\circ 00' 00''$
 $R = 318.31'$
 $T = 223.96'$
 $L = 390.33'$
 $E = 70.89'$

SR 306 RAMP I SPIRAL DATA

P.I. STA. 58+27.40
 $Ls = 200.00'$
 $\theta s = 5^\circ 30' 00''$
 $LT = 133.40'$
 $ST = 66.73'$
 $x = 199.82'$
 $y = 6.40'$
 $k = 99.97'$
 $p = 1.60'$

SR 306 RAMP K CURVE DATA

P.I. STA. 246+49.92
 $\Delta = 1^\circ 33' 46''$ (RT)
 $Dc = 0^\circ 25' 00''$
 $R = 13,750.99'$
 $T = 187.54'$
 $L = 375.06'$
 $E = 1.28'$

P.I. STA. 250+55.58
 $\Delta = 2^\circ 42' 34''$ (LT)
 $Dc = 0^\circ 37' 16''$
 $R = 9,223.69'$
 $T = 218.14'$
 $L = 436.20'$
 $E = 2.58'$

P.I. STA. 258+45.50
 $\Delta = 33^\circ 00' 02''$ (RT)
 $Dc = 5^\circ 15' 00''$
 $R = 1,091.35'$
 $T = 323.28'$
 $L = 628.58'$
 $E = 46.87'$

SR 306 CURVE DATA

P.I. STA. 13+25.92
 $\Delta = 2^\circ 01' 59''$ (LT)
 $Dc = 4^\circ 00' 00''$
 $R = 1,432.39'$
 $T = 25.41'$
 $L = 50.82'$
 $E = 0.23'$

P.I. STA. 16+61.79
 $\Delta = 13^\circ 13' 20''$ (RT)
 $Dc = 4^\circ 00' 00''$
 $R = 1,432.39'$
 $T = 166.01'$
 $L = 330.55'$
 $E = 9.59'$

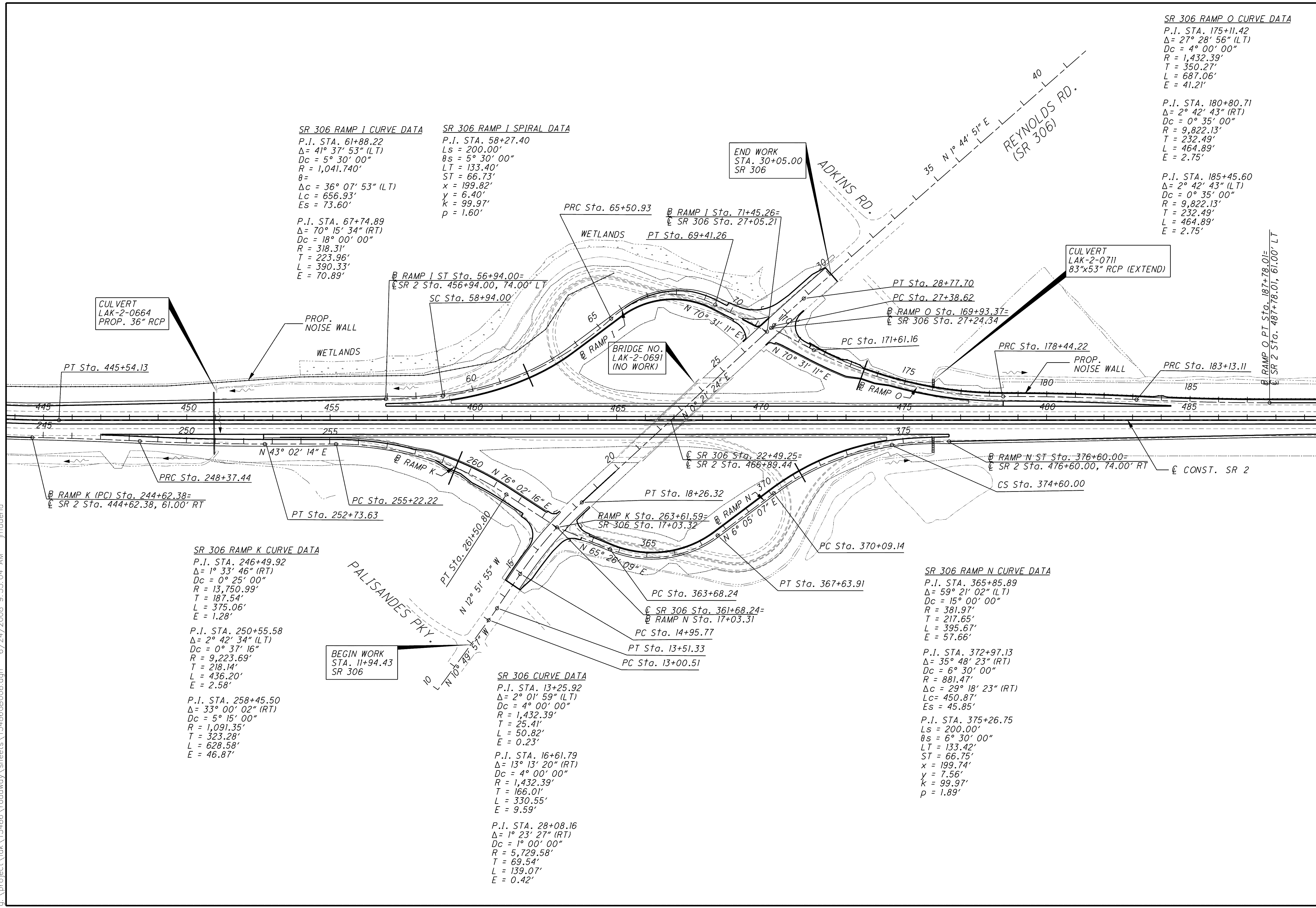
P.I. STA. 28+08.16
 $\Delta = 1^\circ 23' 27''$ (RT)
 $Dc = 1^\circ 00' 00''$
 $R = 5,729.58'$
 $T = 69.54'$
 $L = 139.07'$
 $E = 0.42'$

SR 306 RAMP N CURVE DATA

P.I. STA. 365+85.89
 $\Delta = 59^\circ 21' 02''$ (LT)
 $Dc = 15^\circ 00' 00''$
 $R = 381.97'$
 $T = 217.65'$
 $L = 395.67'$
 $E = 57.66'$

P.I. STA. 372+97.13
 $\Delta = 35^\circ 48' 23''$ (RT)
 $Dc = 6^\circ 30' 00''$
 $R = 881.47'$
 $\Delta c = 29^\circ 18' 23''$ (RT)
 $Lc = 450.87'$
 $Es = 45.85'$

P.I. STA. 375+26.75
 $Ls = 200.00'$
 $\theta s = 6^\circ 30' 00''$
 $LT = 133.42'$
 $ST = 66.75'$
 $x = 199.74'$
 $y = 7.56'$
 $k = 99.97'$
 $p = 1.89'$



o:\project\lak\13486\roadway\sheets\13486GB008.dgn 6/24/2008 9:33:04 AM jmadaria