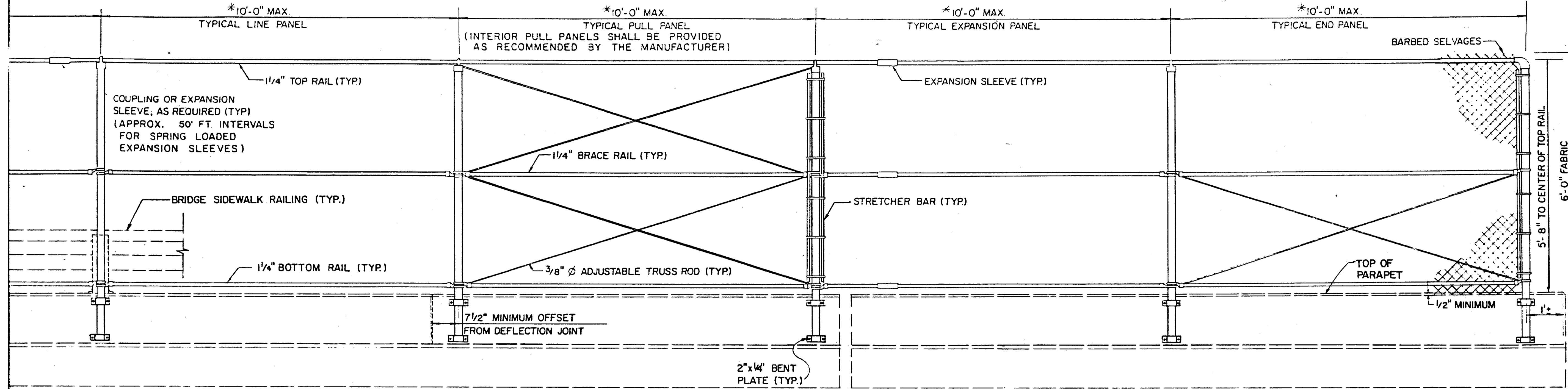


WICROFILMED  
NOV 5 1992

FHWA REGION	STATE	PROJECT	
5	OHIO	LAK-2-14.38	

137  
138

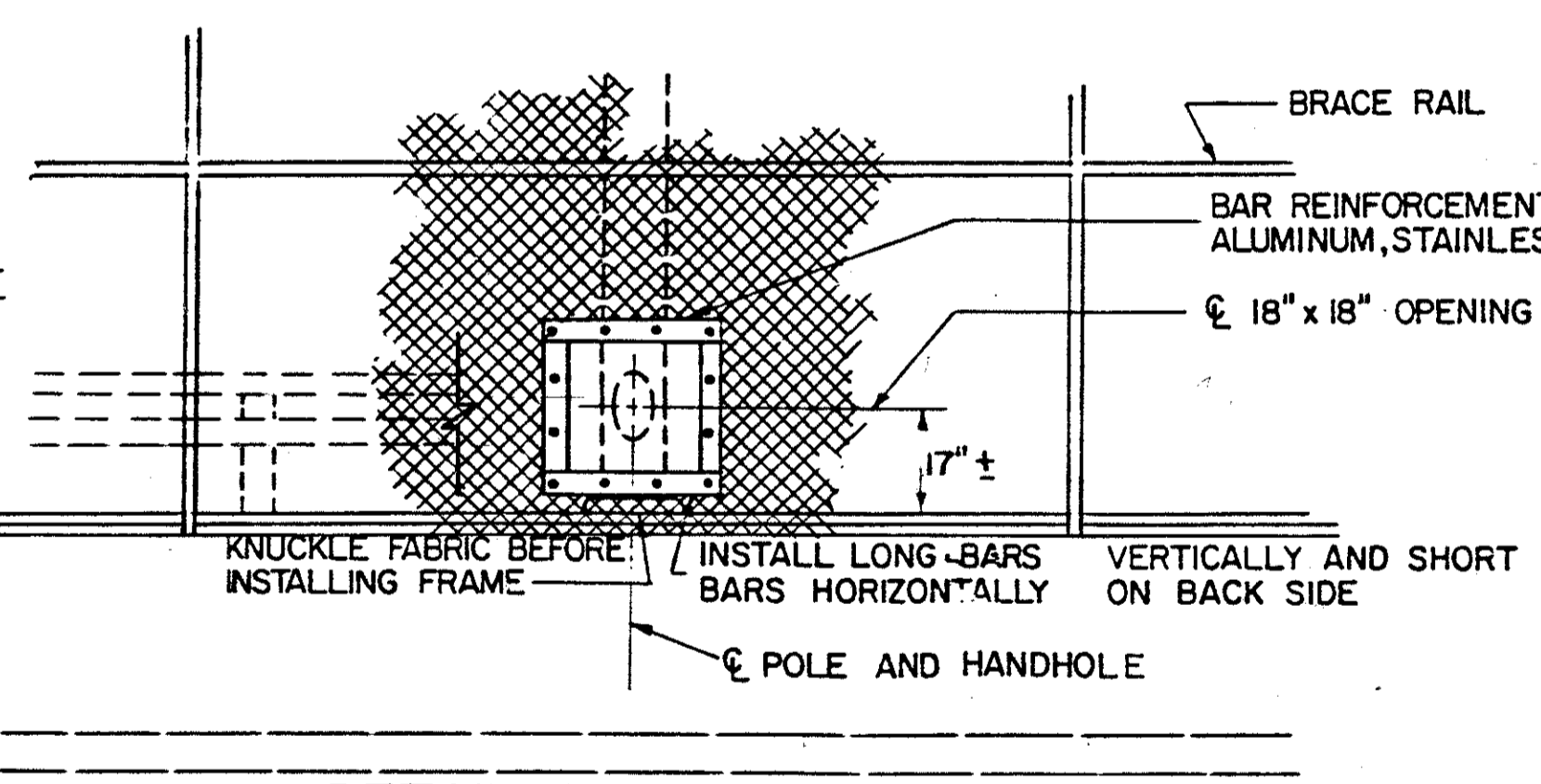
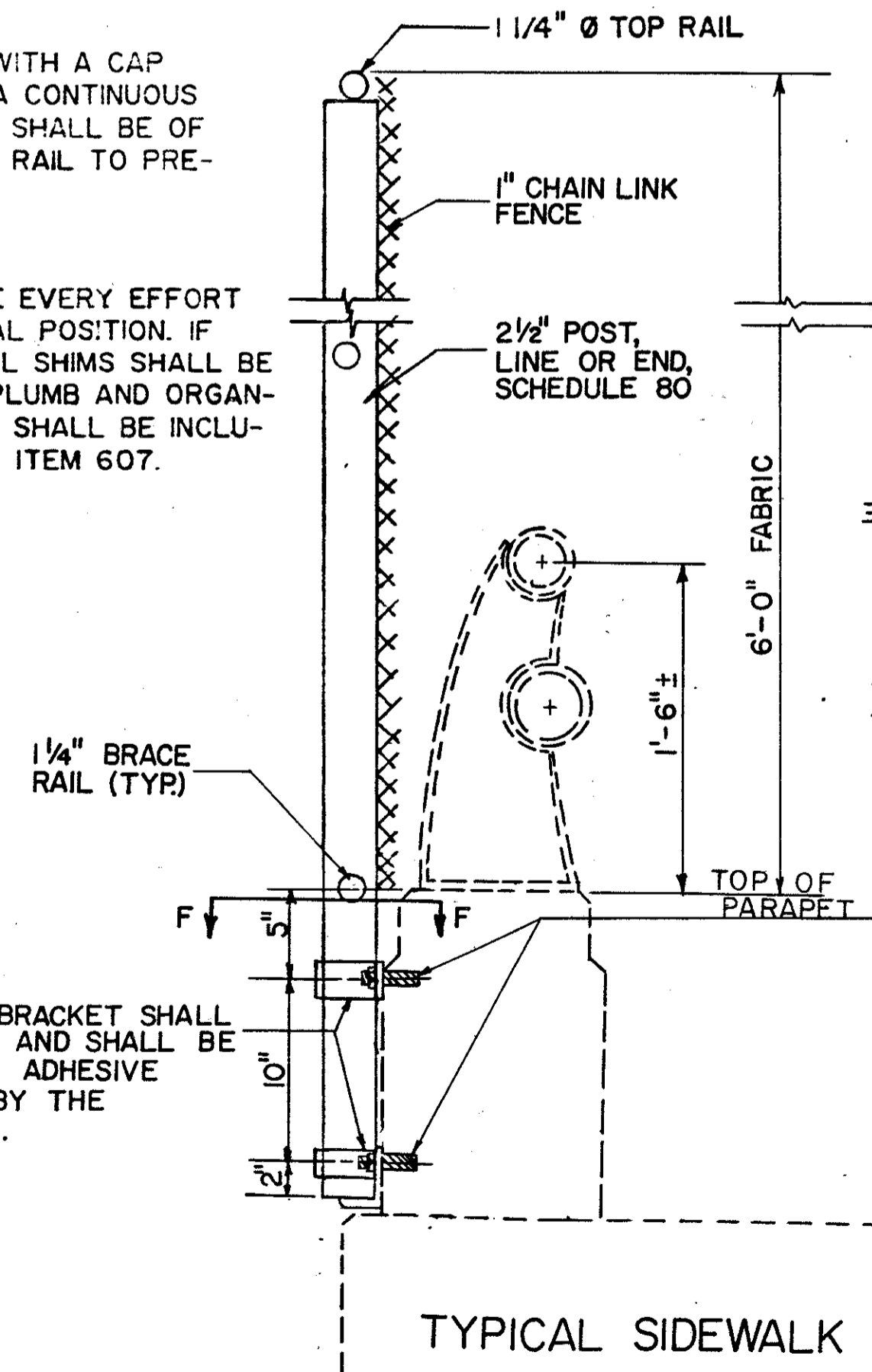


\* TO MATCH ALUMINUM POST SPACING (TYP), EXCEPT AS SHOWN BELOW AT EXPANSION JOINTS.

**NOTES:**

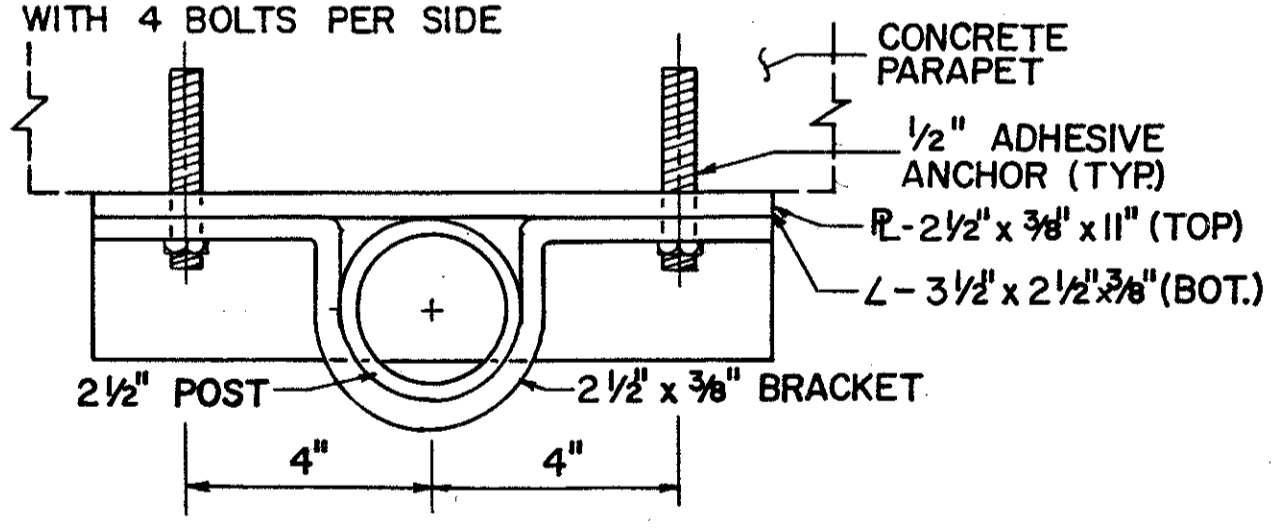
- POST TOPS SHALL BE FITTED WITH A CAP SUITABLE FOR ACCOMODATING A CONTINUOUS TOP RAIL. THE END POST CAPS SHALL BE OF A DESIGN TO CONTAIN THE TOP RAIL TO PREVENT HORIZONTAL MOVEMENT.
- THE CONTRACTOR SHALL MAKE EVERY EFFORT TO PLACE POSTS IN A VERTICAL POSITION. IF NECESSARY, GALVANIZED METAL SHIMS SHALL BE USED TO SECURE POSTS IN A PLUMB AND ORGANIZED POSITION. COST OF SHIMS SHALL BE INCLUDED IN THE UNIT PRICE BID FOR ITEM 607.
- THE COST OF ALL MATERIALS, INCLUDING CHAIN LINK FABRIC, POSTS, BRACKETS, BASE PLATES, BOLTS, AND BOLT HOLES, LABOR, TOOLS, AND INCIDENTALS NECESSARY TO COMPLETE THE WORK SHALL BE INCLUDED IN THE UNIT PRICE BID PER LIN. FT. FOR ITEM 607, "FENCE TYPE CL", AS PER PLAN, TYPE OPV.

**OUTSIDE ELEVATION**



**DETAIL AT LIGHT POLE  
INSIDE ELEVATION**

1/2" ADHESIVE ANCHORS, 5" EMBEDMENT LENGTH, THREADED PORTION SHALL NOT EXTEND BEYOND THE NUT BY MORE THAN 3/8" AND SHALL EXTEND BEYOND THE FACE OF THE PARAPET APPROXIMATELY 1".



**SECTION F-F**

THE 1/2" ADHESIVE ANCHORS SHALL BE, HAS 12-612 WITH HBP M12-V2 CARTRIDGE AS MANUFACTURED BY HILTY FASTENING SYSTEMS, P.O. BOX 45400, TULSA, OKLAHOMA 74145 (918) 627-9711, 6513 A 307 STANDARD CARBON STEEL CHEM-STUD ANCHOR RODS WITH A 6503 CHEM-STUD CAPSULE AS MANUFACTURED BY THE RAWLPLUG OHIO COMPANY, 125 WEST BRIDGE DRIVE, BEREA, OHIO 44017 (216) 243-9832, Z126-M12 STUD ASSEMBLY WITH A M12-12 PARABOND CAPSULE AS MANUFACTURED BY MOLLY PARABOND CAPSULE ANCHORS, 504 MT. LAUREL AVENUE, TEMPLE, PENNSYLVANIA 19560 (215) 927-5764. AN ENGINEER APPROVED ADHESIVE ANCHOR EQUAL OR ACCORDING TO SS-852.

ITEM 607 - FENCE, TYPE CL, AS PER PLAN, TYPE OPV  
THIS ITEM INCLUDES THE FURNISHING OF ALL MATERIALS, LABOR, EQUIPMENT AND INCIDENTALS NECESSARY TO COMPLETE THE FENCING. TENSION BANDS SHALL BE A MINIMUM OF 12 GAUGE STEEL BY 7/8 INCHES WIDE ASSEMBLED WITH 5/16 INCH DIAMETER BY 1/4 INCH GALVANIZED OR CADMIUM PLATED BOLTS. ONE TENSION BAND SHALL BE REQUIRED FOR EACH FOOT OF FABRIC HEIGHT. FENCE POSTS AND BRACKETS SHALL BE ALIGNED VERTICALLY. RAILS SHALL BE PARALLEL TO GRADE. THE FABRIC AND RAILS SHALL BE FREE TO EXPAND OR CONTRACT ACROSS BRIDGE EXPANSION JOINTS. MATERIALS AND WORKMANSHIP SHALL MEET THE REQUIREMENTS OF ITEM 607 EXCEPT THAT ALUMINUM ALLOY POSTS SHALL NOT BE USED. FABRIC TIES SHALL BE SPACED 14 INCH C/C MAXIMUM ON LINE OR END POSTS AND 24 INCH C/C MAXIMUM ON ALL RAILS. ALL POSTS AND PIPE SIZES ARE NOTED IN TERMS OF THE NOMINAL INSIDE DIAMETER OF STANDARD WEIGHT PIPE, SCHEDULE 40, UNLESS OTHERWISE SHOWN. HARDWARE SHALL BE THAT OF THE CHAIN LINK FENCE INDUSTRY STANDARD. BASE PLATES AND MISCELLANEOUS BRACKETS FOR STEEL POSTS MAY BE OF ANY COMMERCIAL WELDABLE STEEL HAVING A YIELD STRENGTH OF 33,000 PSI. ALUMINUM ALLOY FABRIC (AASHTO M-181, TYPE III) SHALL BE USED.

POST BRACKETS AND BOLTS: POST BRACKET SHALL BE 2 1/2 x 3/8 GALVANIZED BENT PLATE AND SHALL BE SHAPED TO FIT THE 2 1/2 POSTS. ADHESIVE ANCHORS ARE TO BE APPROVED BY THE ENGINEER (SEE NOTE THIS SHEET).

STATE OF OHIO  
DEPARTMENT OF TRANSPORTATION  
DISTRICT 12 LOCATION 9 DESIGN  
25/26  
TYPE OPV 11-1-87  
FENCE DETAILS 11-24-87  
BR. NO. LAK-2-1428 9-28-88  
BR. NO. LAK-2-1597  
BR. NO. LAK-2-1677  
BR. NO. LAK-2-1752

DESIGNED	DWL	DRAWN	LAM	TRACED	CHEKED	REVIEWED	DATE	REVISED	D.W.L.
----------	-----	-------	-----	--------	--------	----------	------	---------	--------