

MICROFILMED
OCT 28 1985

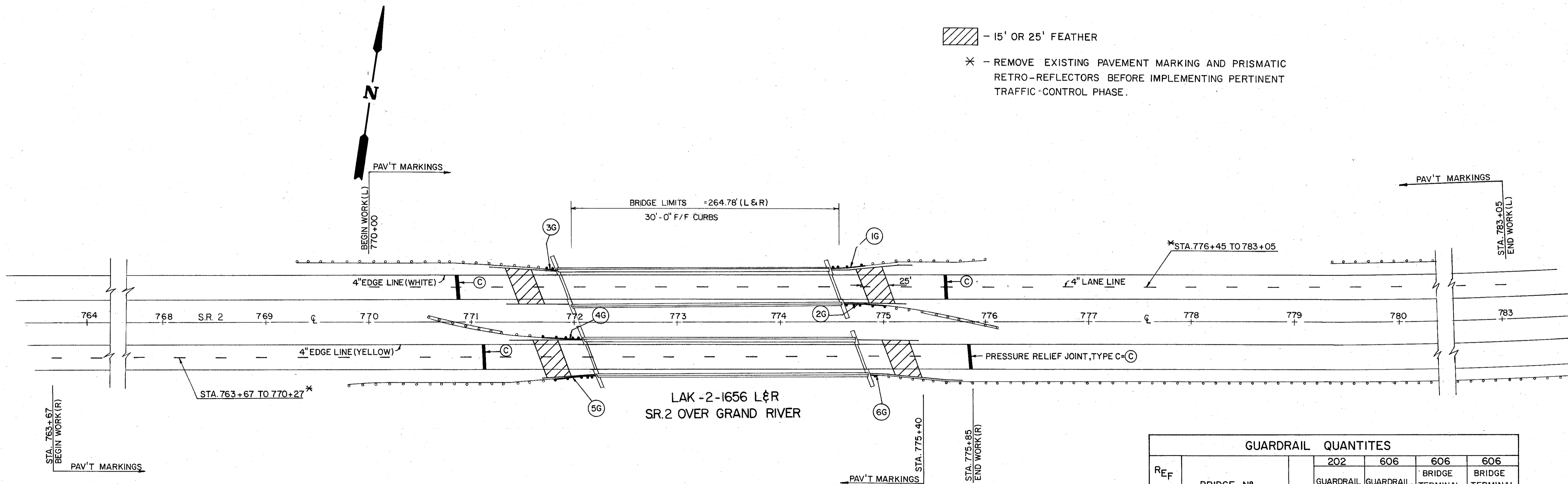
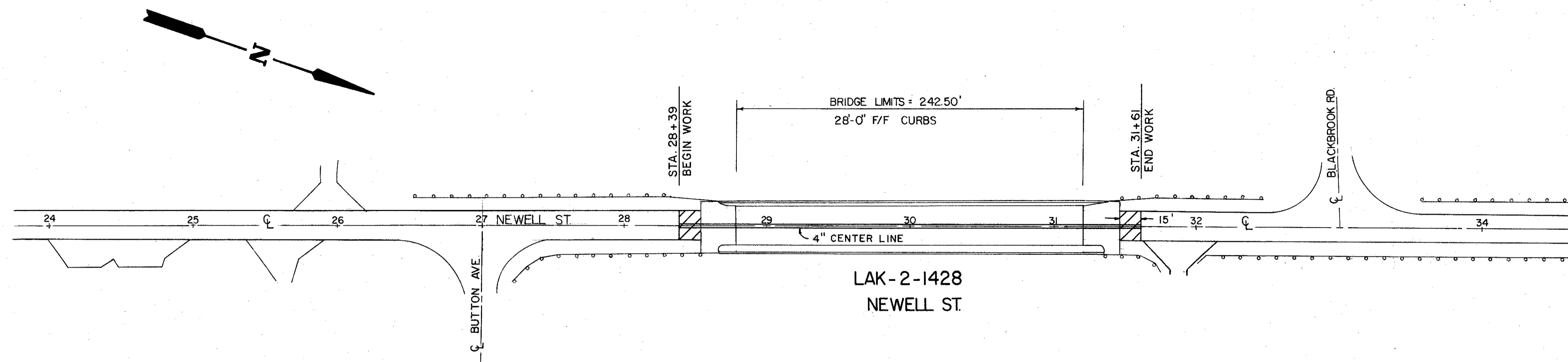
COMPUTED BY: D.A.S. 4/82
CHECKED BY: H.C. 6/82

FHWA REGION	STATE	PROJECT	
5	OHIO		

12
18

LAKE COUNTY
LAK-2/44 - 1428/561

PLAN NO BR-97-82



- 15' OR 25' FEATHER
- * - REMOVE EXISTING PAVEMENT MARKING AND PRISMATIC RETRO-REFLECTORS BEFORE IMPLEMENTING PERTINENT TRAFFIC CONTROL PHASE.

		GUARDRAIL QUANTITIES			
REF No	BRIDGE No	202	606	606	606
		GUARDRAIL REMOVED	GUARDRAIL, TYPE 5	BRIDGE TERMINAL ASSEMBLY, TYPE H*	BRIDGE TERMINAL ASSEMBLY, TYPE J
		L.F.	L.F.	EACH	EACH
1G	LAK-2-1656L	37.5	37.5	1	
2G		37.5	37.5	1	
3G		12.5	12.5		1
4G	LAK-2-1656R	37.5	37.5	1	
5G		37.5	37.5	1	
6G		12.5	12.5		1
TOTALS		175	175	4	2

* MODIFIED AS PER PLAN