

FED. RD. DIVISION	STATE	PROJECT	
2	OHIO		

372
384

LAK - 2 - 14.22
R/W PLAN
LIMITED ACCESS

THE BALTIMORE AND OHIO RAILROAD COMPANY

PAINESVILLE TOWNSHIP

"S.F. LOT"

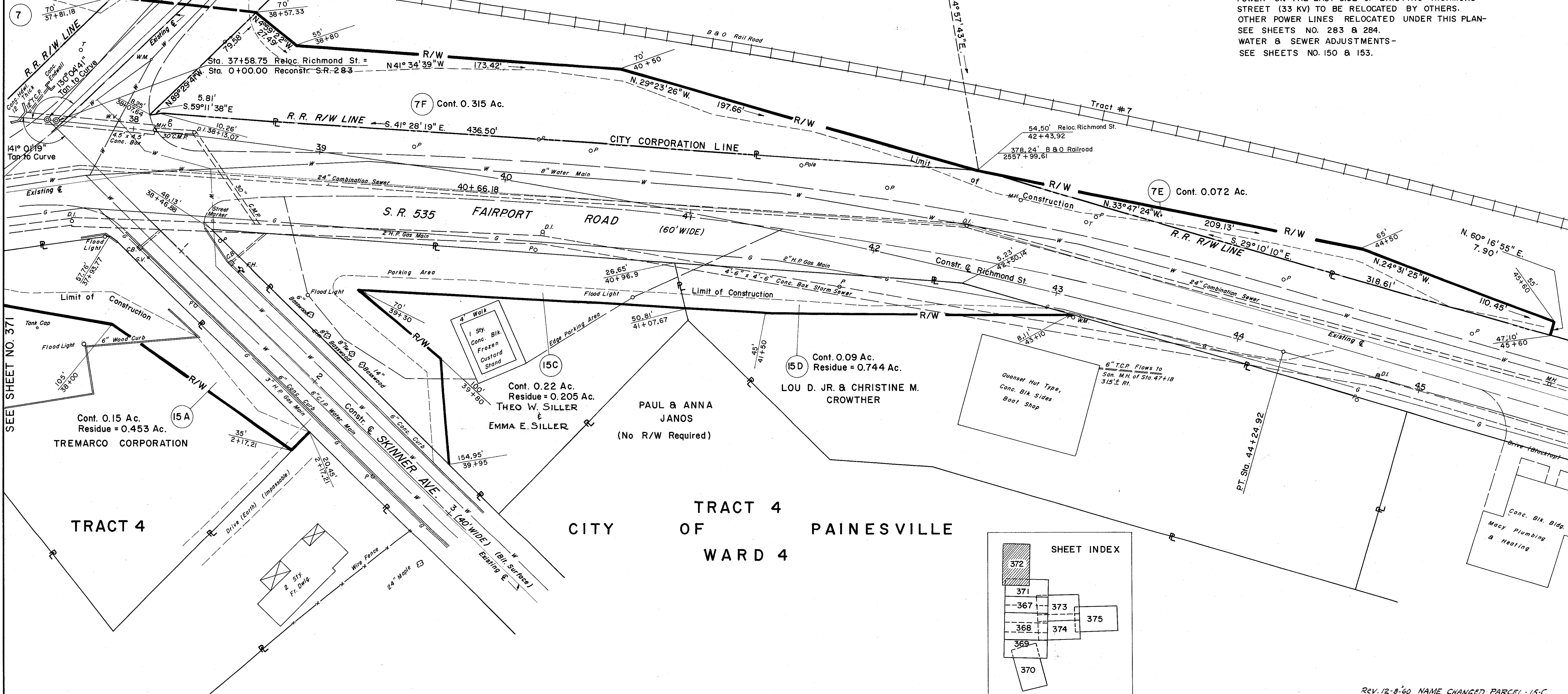
THE BALTIMORE AND OHIO RAILROAD COMPANY

RELOC. RICHMOND STREET
CURVE DATA
P.I. Sta. 38+71.16
 $\Delta = 16^\circ 43' 58''$
 $D = 1^\circ 30' 00''$
 $R = 3819.72'$
 $L = 1115.52'$
 $T = 561.76'$

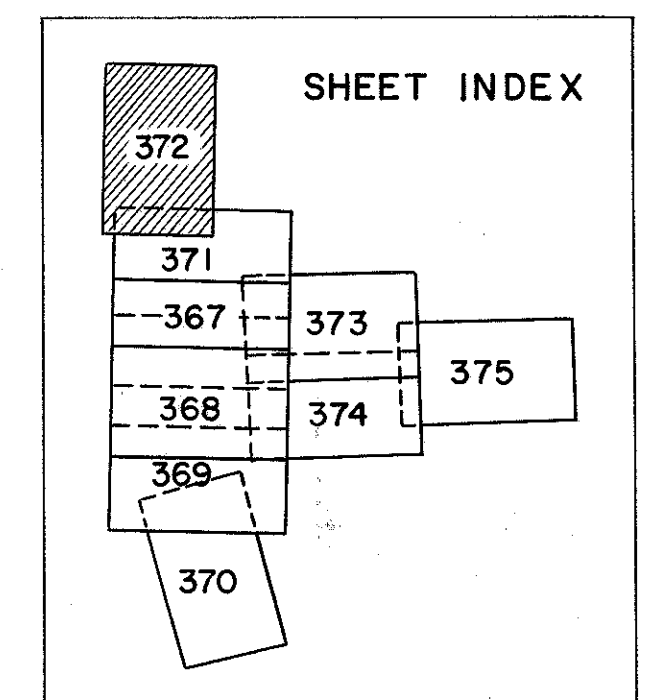
UTILITIES:
GAS & TELEPHONE LINES RELOCATED BY OTHERS.
POWER ON THE EAST SIDE OF EXISTING RICHMOND STREET (33 KV) TO BE RELOCATED BY OTHERS.
OTHER POWER LINES RELOCATED UNDER THIS PLAN - SEE SHEETS NO. 283 & 284.
WATER & SEWER ADJUSTMENTS - SEE SHEETS NO. 150 & 153.

LOT II TRACT 4

Sta. 37+53.61 Reloc. Richmond St. =
Sta. 0+00.00 Reconstr. Skinner Ave.



SEE SHEET NO. 371



Rev. 12-8-60 NAME CHANGED PARCEL - 15-C

Revised 9-23-60