

PAINESVILLE TOWNSHIP  
LOT II TRACT 4

Lake County City of Painesville  
Painesville Township R. 8 W.  
T. 11 N.

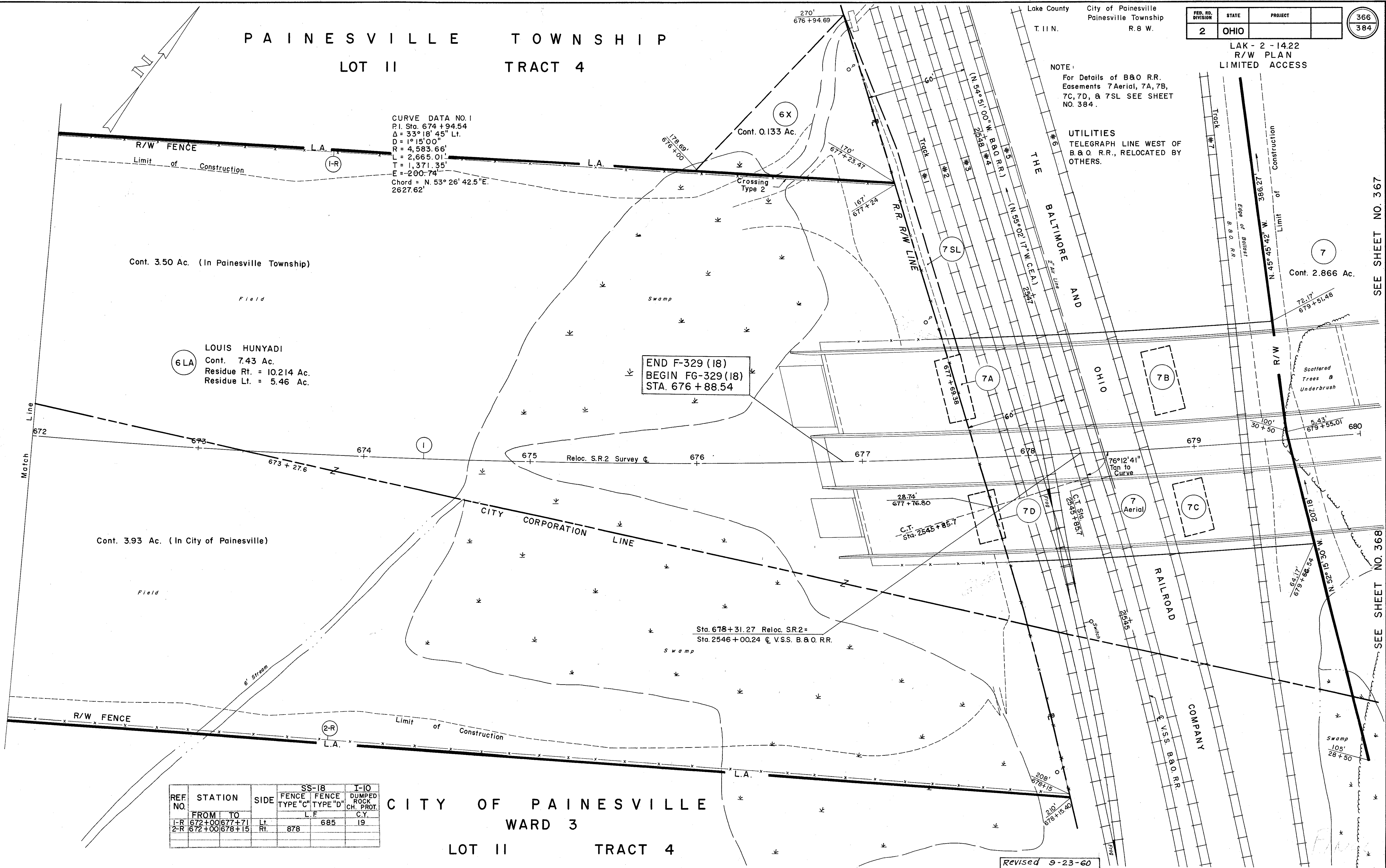
FED. NO. DIVISION	STATE	PROJECT	366 384
2	OHIO		

LAK - 2 - 14.22  
R/W PLAN  
LIMITED ACCESS

NOTE:  
For Details of B&O R.R.  
Easements 7Aerial, 7A, 7B,  
7C, 7D, & 7SL SEE SHEET  
NO. 384.

UTILITIES  
TELEGRAPH LINE WEST OF  
B. & O. R.R., RELOCATED BY  
OTHERS.

CURVE DATA NO. 1  
P.I. Sta. 674 + 94.54  
 $\Delta = 33^\circ 18' 45''$  Lt.  
D = 1° 15' 00"  
R = 4,583.66'  
L = 2,665.01'  
T = 1,371.35'  
E = -200.74'  
Chord = N. 53° 26' 42.5" E.  
2627.62'



Cont. 3.50 Ac. (In Painesville Township)  
Field

6LA LOUIS HUNYADI  
Cont. 7.43 Ac.  
Residue Rt. = 10.214 Ac.  
Residue Lt. = 5.46 Ac.

END F-329 (18)  
BEGIN FG-329 (18)  
STA. 676 + 88.54

Cont. 3.93 Ac. (In City of Painesville)  
Field

Sta. 678 + 31.27 Reloc. S.R.2 =  
Sta. 2546 + 00.24 C. V.S.S. B. & O. R.R.

REF. NO.	STATION		SIDE	SS-18		I-10 DUMPED ROCK CH. PROT. C.Y.
	FROM	TO		FENCE TYPE "C"	FENCE TYPE "D"	
1-R	672+00	677+71	Lt.	878	685	19
2-R	672+00	678+15	Rt.			

CITY OF PAINESVILLE  
WARD 3  
LOT II TRACT 4

Revised 9-23-60

SEE SHEET NO. 367

SEE SHEET NO. 368