

FED. RD. DIVISION	STATE	PROJECT
2	OHIO	

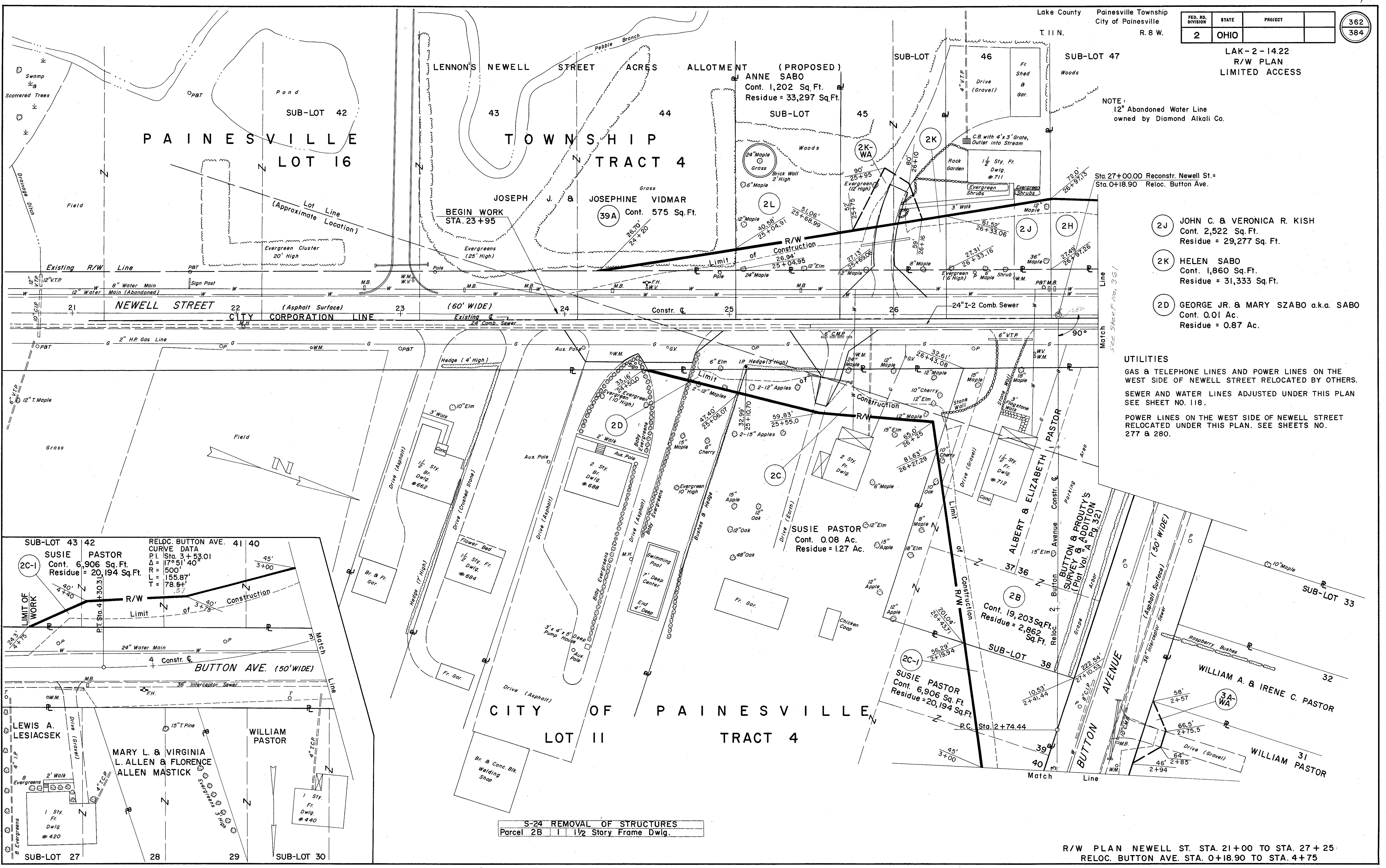
LAK-2-14.22
R/W PLAN
LIMITED ACCESS

NOTE:
12" Abandoned Water Line
owned by Diamond Alkali Co.

Sta. 27+00.00 Reconstr. Newell St. =
Sta. 0+18.90 Reloc. Button Ave.

- (2J) JOHN C. & VERONICA R. KISH
Cont. 2,522 Sq. Ft.
Residue = 29,277 Sq. Ft.
- (2K) HELEN SABO
Cont. 1,860 Sq. Ft.
Residue = 31,333 Sq. Ft.
- (2D) GEORGE JR. & MARY SZABO a.k.a. SABO
Cont. 0.01 Ac.
Residue = 0.87 Ac.

UTILITIES
GAS & TELEPHONE LINES AND POWER LINES ON THE WEST SIDE OF NEWELL STREET RELOCATED BY OTHERS.
SEWER AND WATER LINES ADJUSTED UNDER THIS PLAN SEE SHEET NO. 118.
POWER LINES ON THE WEST SIDE OF NEWELL STREET RELOCATED UNDER THIS PLAN. SEE SHEETS NO. 277 & 280.



SUB-LOT 43 42
SUSIE PASTOR
Cont. 6,906 Sq. Ft.
Residue = 20,194 Sq. Ft.

RELOC. BUTTON AVE. 41 40
CURVE DATA
P.I. Sta. 3+53.01
Δ = 17° 51' 40"
R = 500'
L = 155.87'
T = 78.5'

LEWIS A. LESIACSEK
MARY L. & VIRGINIA L. ALLEN & FLORENCE ALLEN MASTICK
WILLIAM PASTOR

1 Sty. Fr. Dwlg. # 420
1 Sty. Fr. Dwlg. # 440

S-24 REMOVAL OF STRUCTURES
Parcel 2B 1 1/2 Story Frame Dwlg.

R/W PLAN NEWELL ST. STA. 21+00 TO STA. 27+25
RELOC. BUTTON AVE. STA. 0+18.90 TO STA. 4+75