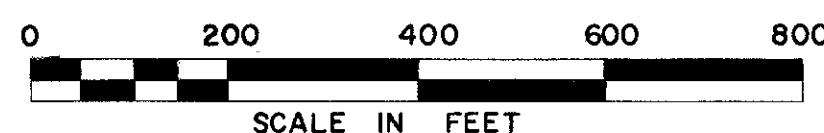


LOCATION PLAN

LAK - 2 - 14.22

PAINESVILLE TOWNSHIP CITY OF PAINESVILLE LAKE COUNTY



LIMITED ACCESS

Received _____ Time _____
 Recorded _____
 Plat Book VOL N Page 51-1
 Signed _____ Recorder Lake County, Ohio
 Fee _____ Paid _____

357
384

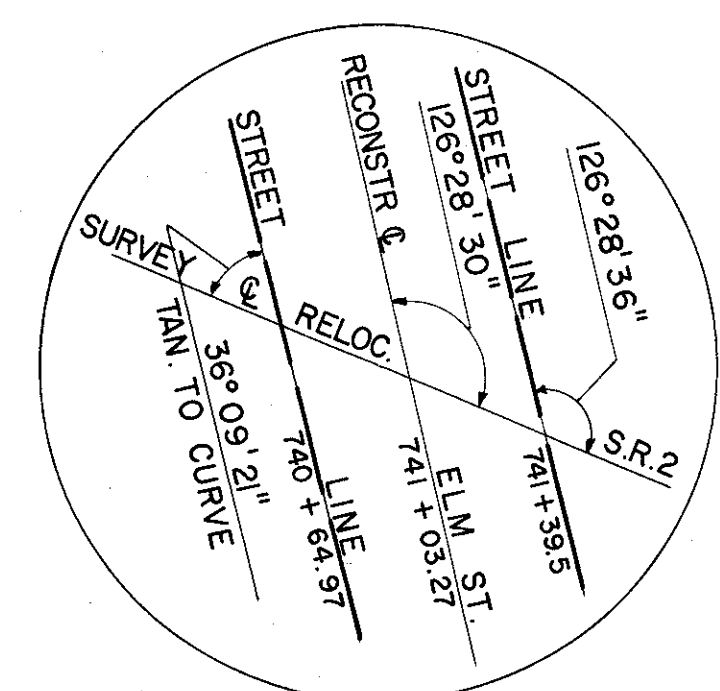
Signed Wm B. Henry
 Division Engineer

Date 12-23-60

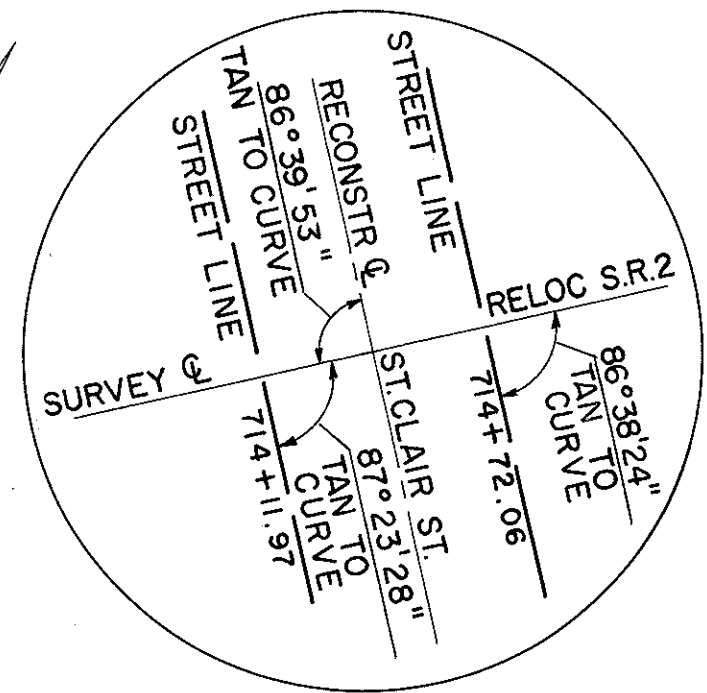
Signed John C. Brillhart
 John C. Brillhart, Registered Surveyor No. 4659
 Capitol Engineering Associates

Date Sept. 12, 1960

Location and Limited Access Approved and Journalized by the Director of Highways, Recorded on _____ in Volume _____ Page _____ of the Director's Journal, Pursuant to Law.



DETAIL "H"



DETAIL "E-1"

CITY OF PAINESVILLE
 WARD 4
 TRACT 3

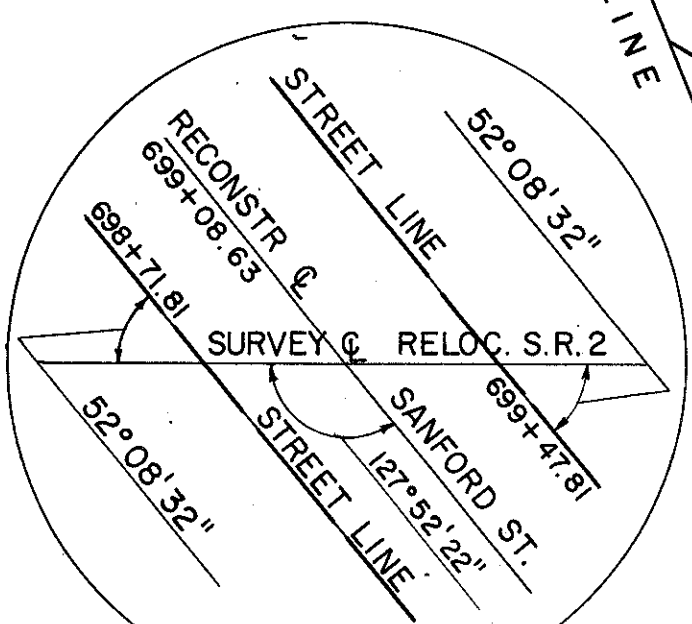
STA. 714+41.90 @ S.R. 2 =
 STA. 30+00.08 RECONSTR.
 ST. CLAIR STREET

CITY OF PAINESVILLE
 WARD 1
 TRACT 3
 LOT 6

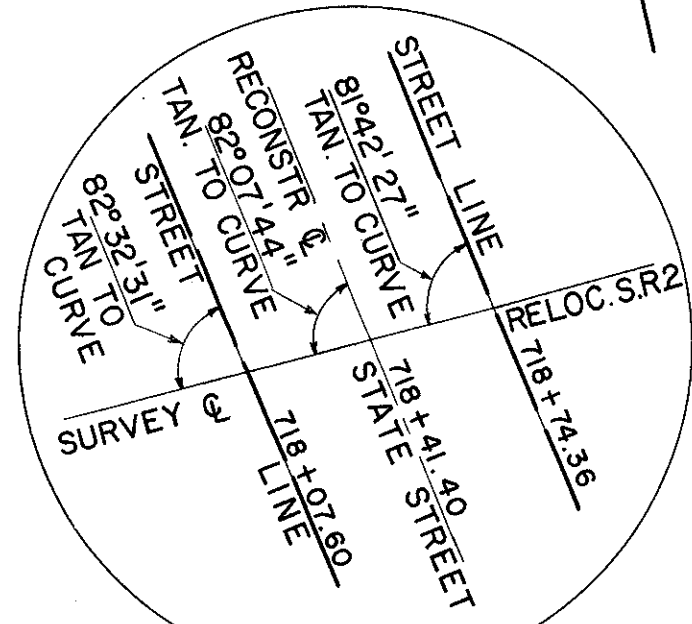
CURVE DATA
 CHANNEL EASEMENT
 P.I. STA. 36+94.00
 $\Delta = 44^\circ 32' 45''$ Lt.
 R = 300.00'
 L = 233.24'
 T = 122.87'
 P.C. STA. 35+71.13
 P.T. STA. 38+04.37

TRACT 3
 LOT 5

STA. 741+03.27 @ S.R. 2 =
 STA. 30+02.59 RECONSTR.
 ELM ST.

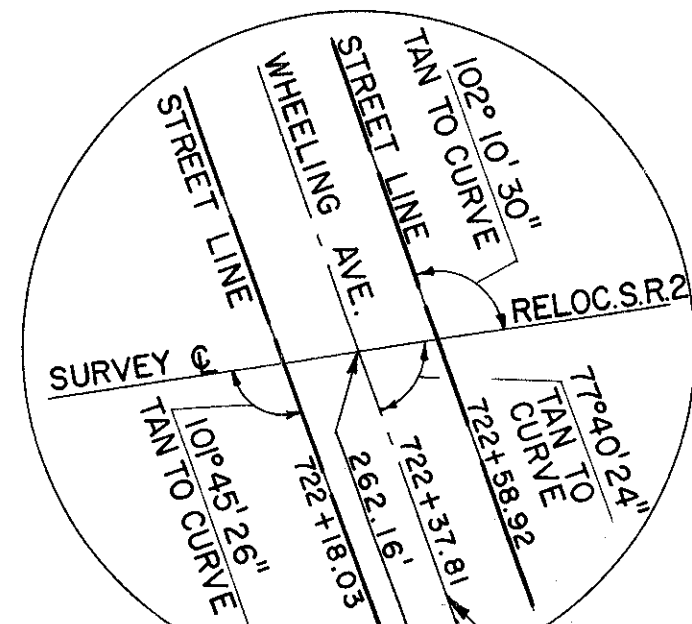


DETAIL "E"



DETAIL "F"

CURVE DATA
 WHEELING AVE. CONN.
 P.I. STA. 12+21.77
 $\Delta = 132^\circ 39' 23''$
 R = 100.00'
 L = 231.53'
 T = 228.11'
 P.C. STA. 9+93.66
 P.T. STA. 12+25.19



DETAIL "G"

CURVE DATA
 S.R. 2
 P.I. STA. 723+82.77
 $\Delta = 45^\circ 11' 45''$
 D = 1° 15' 00"
 R = 4,583.66'
 L = 3,615.67'
 T = 1,907.80'
 E = 381.18'
 CH. = (N.59° 23' 12.5"E.) 3,522.65'

TIE TO WHEELING
 AVE. CONNECTION