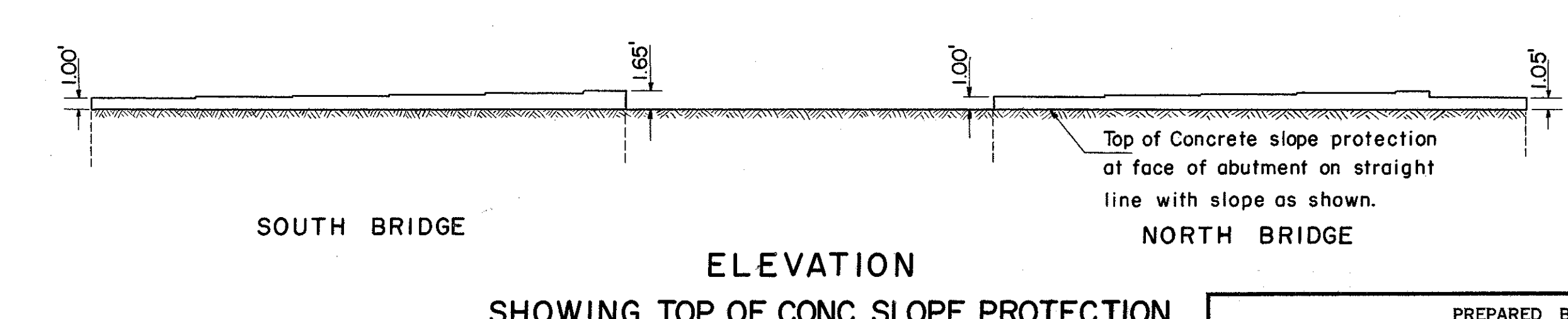
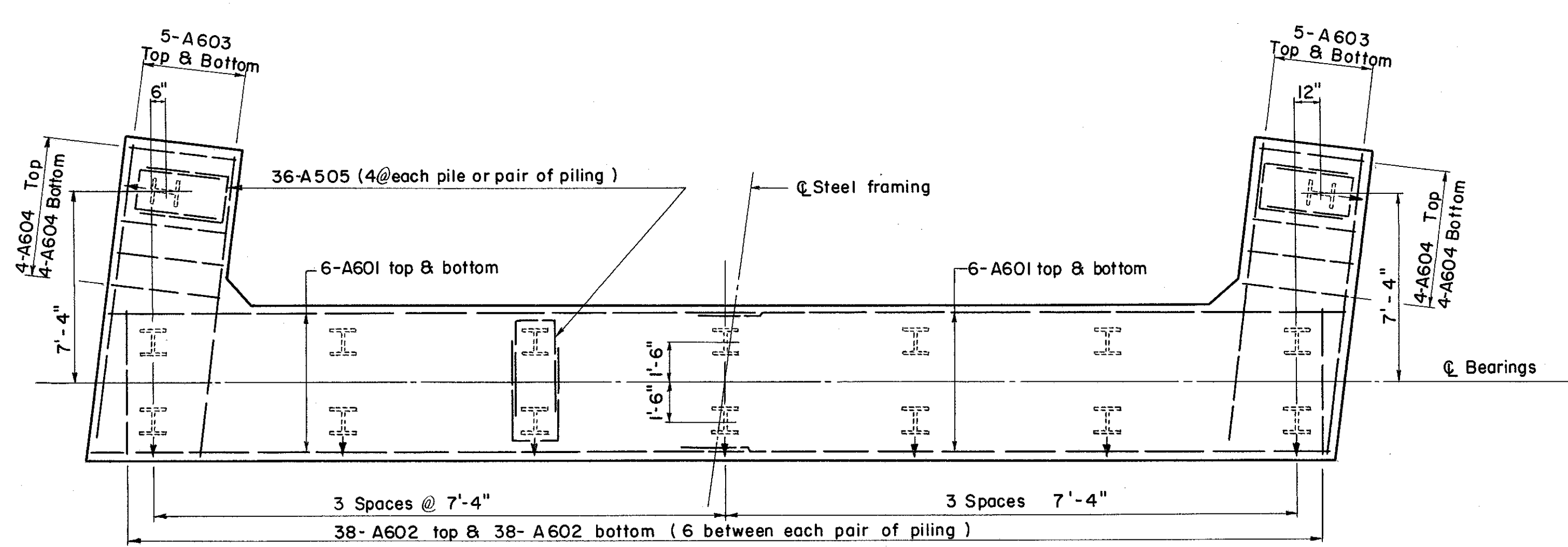
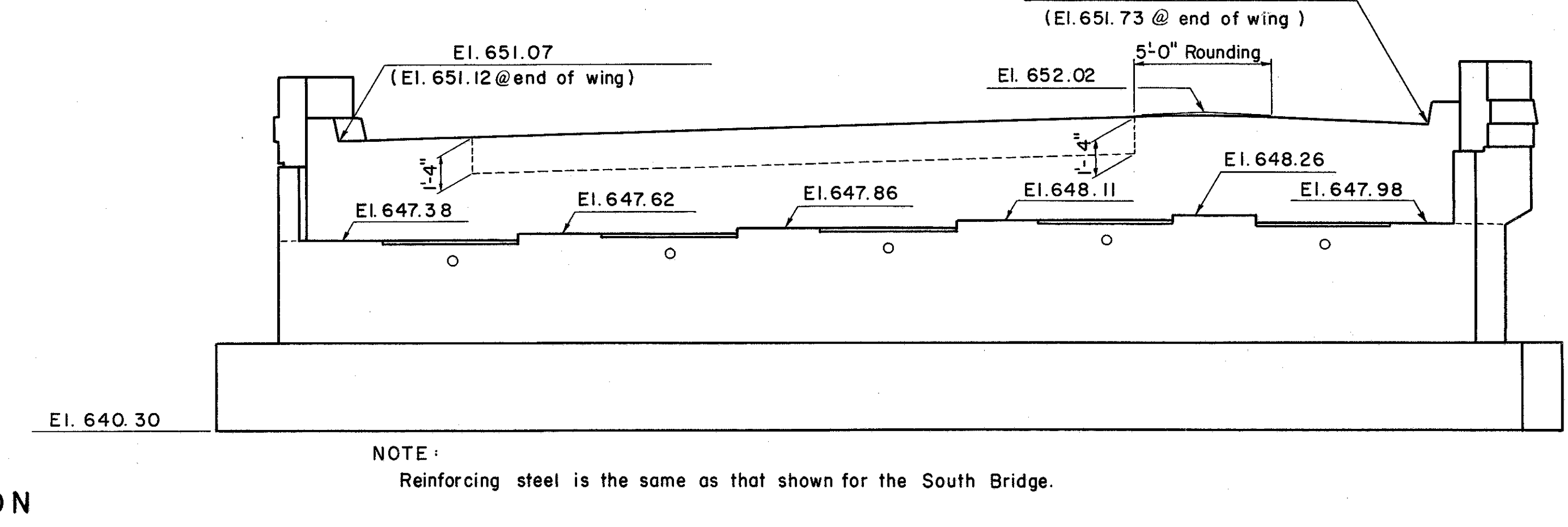
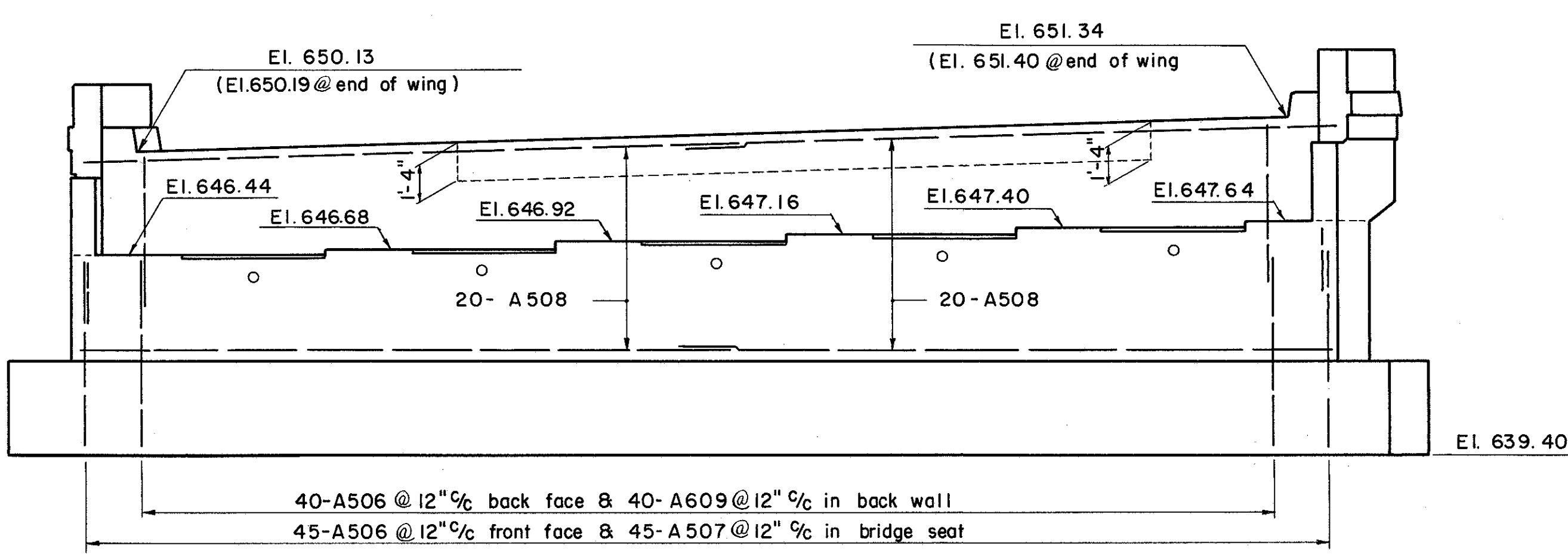
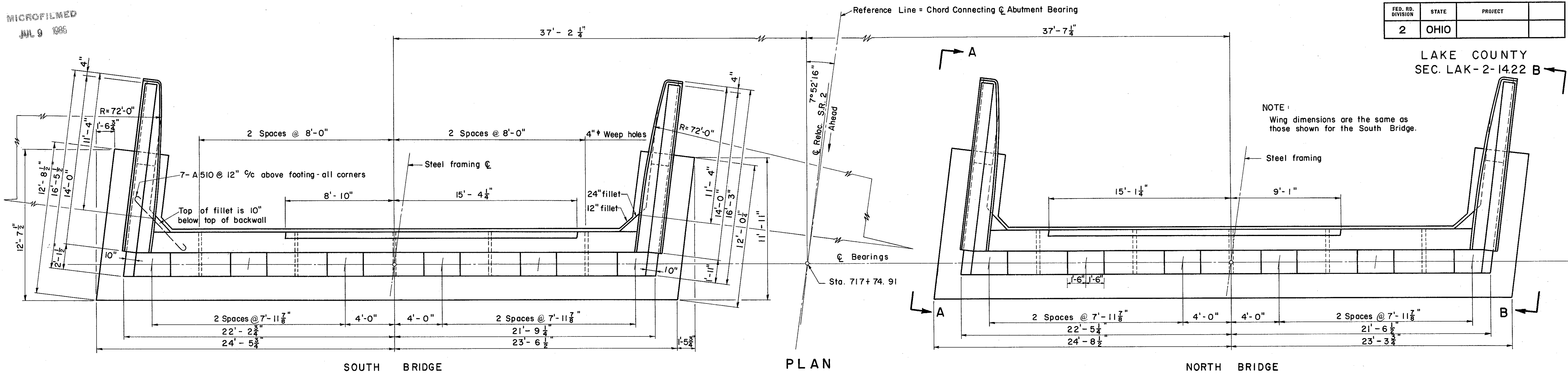


MICROFILMED
JUL 9 1986

FED. RD. DIVISION	STATE	PROJECT	341 384
2	OHIO		

LAKE COUNTY
SEC. LAK-2-1422 B



NOTE:
All piles shown thus (†) to be battered 1:4
All piles - 12 BP53

PREPARED BY CAPITOL ENGINEERING ASSOCIATES, DILLSBURG, PA. FOR					
STATE OF OHIO DEPARTMENT OF HIGHWAYS DIVISION OF DESIGN AND CONSTRUCTION BUREAU OF BRIDGES					
ABUTMENT # 1 BRIDGE NO. LAK-2-1548 L+R RELOC. S.R. 2 OVER STATE STREET LAKE COUNTY					
STA. 718 + 41.40					
DESIGNED	DRAWN	TRACED	CHECKED	REVIEWED DATE	REVISED
J.M.	J.M.		M.C.		