

MICROFILMED
JUL 9 1986

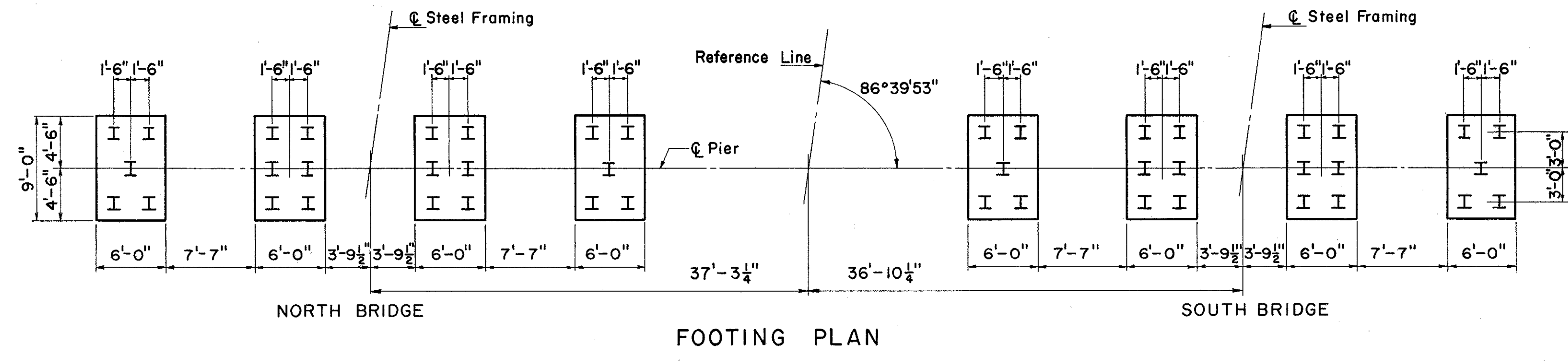
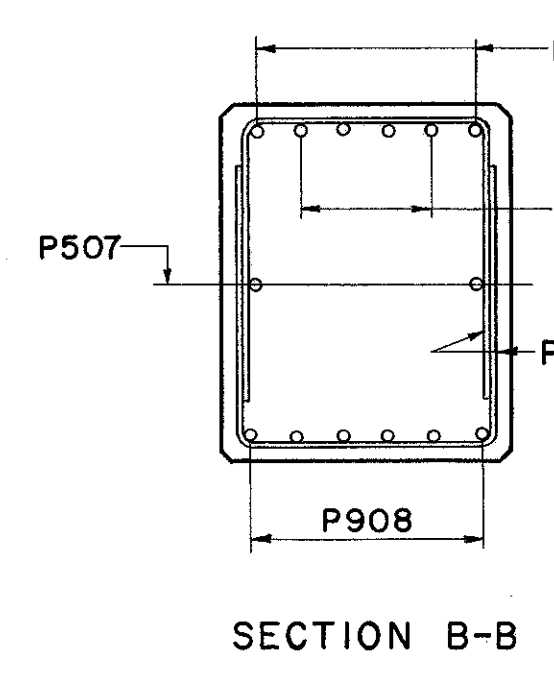
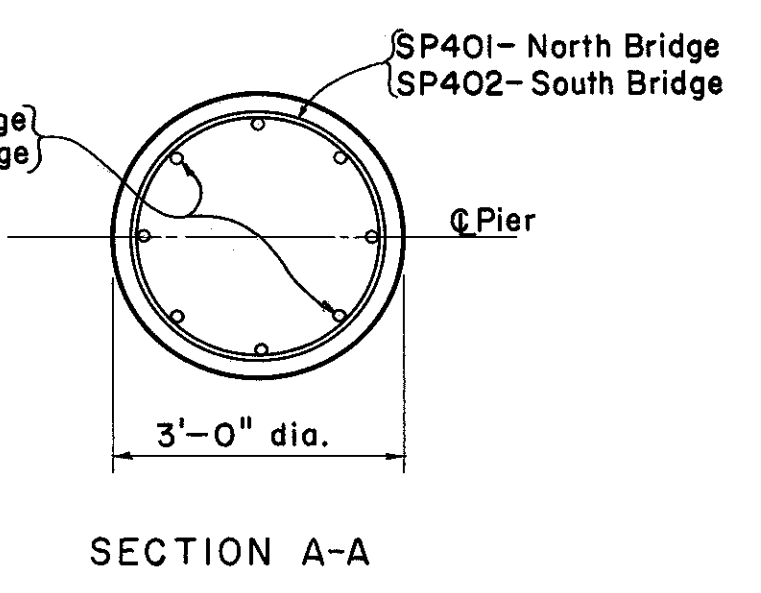
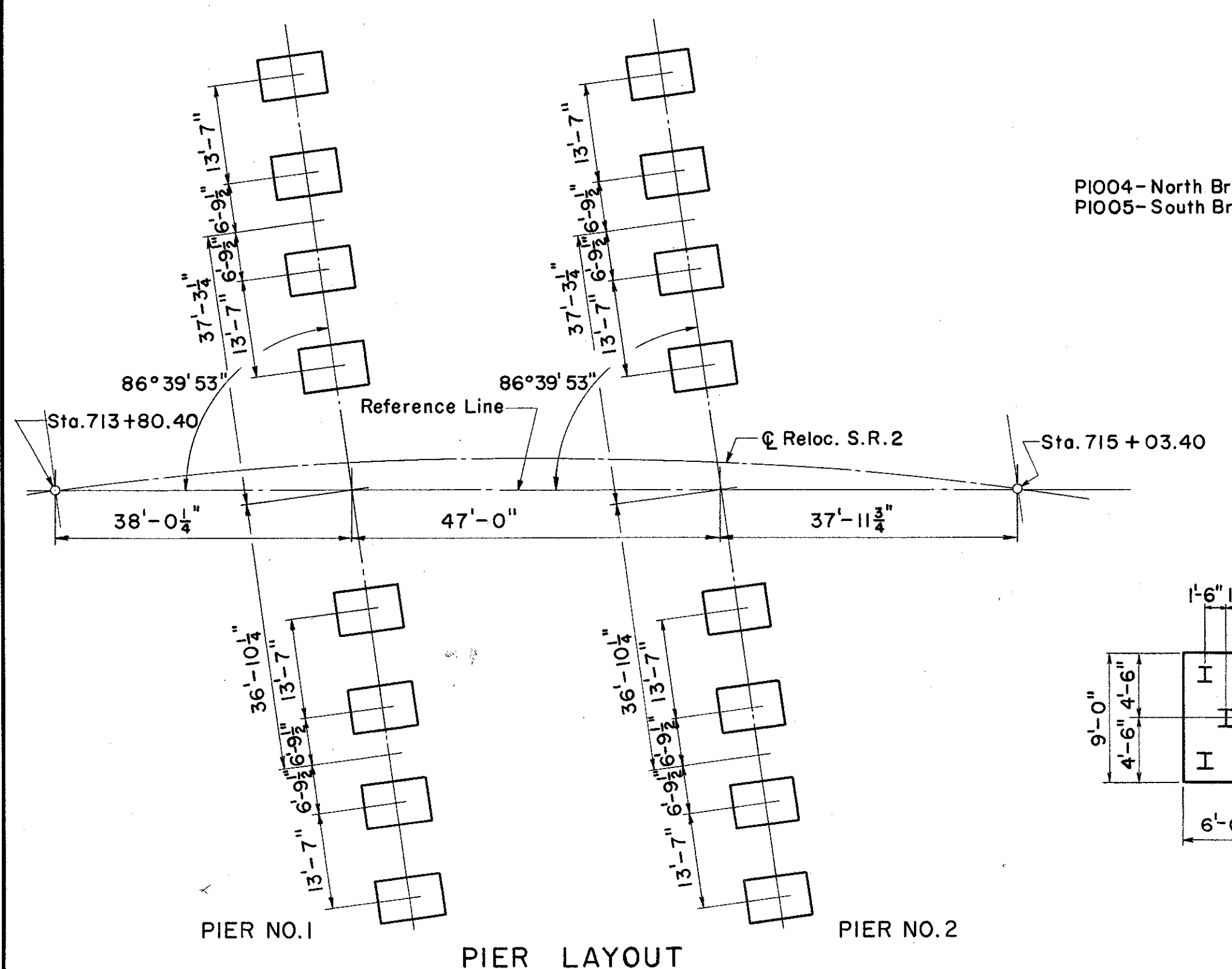
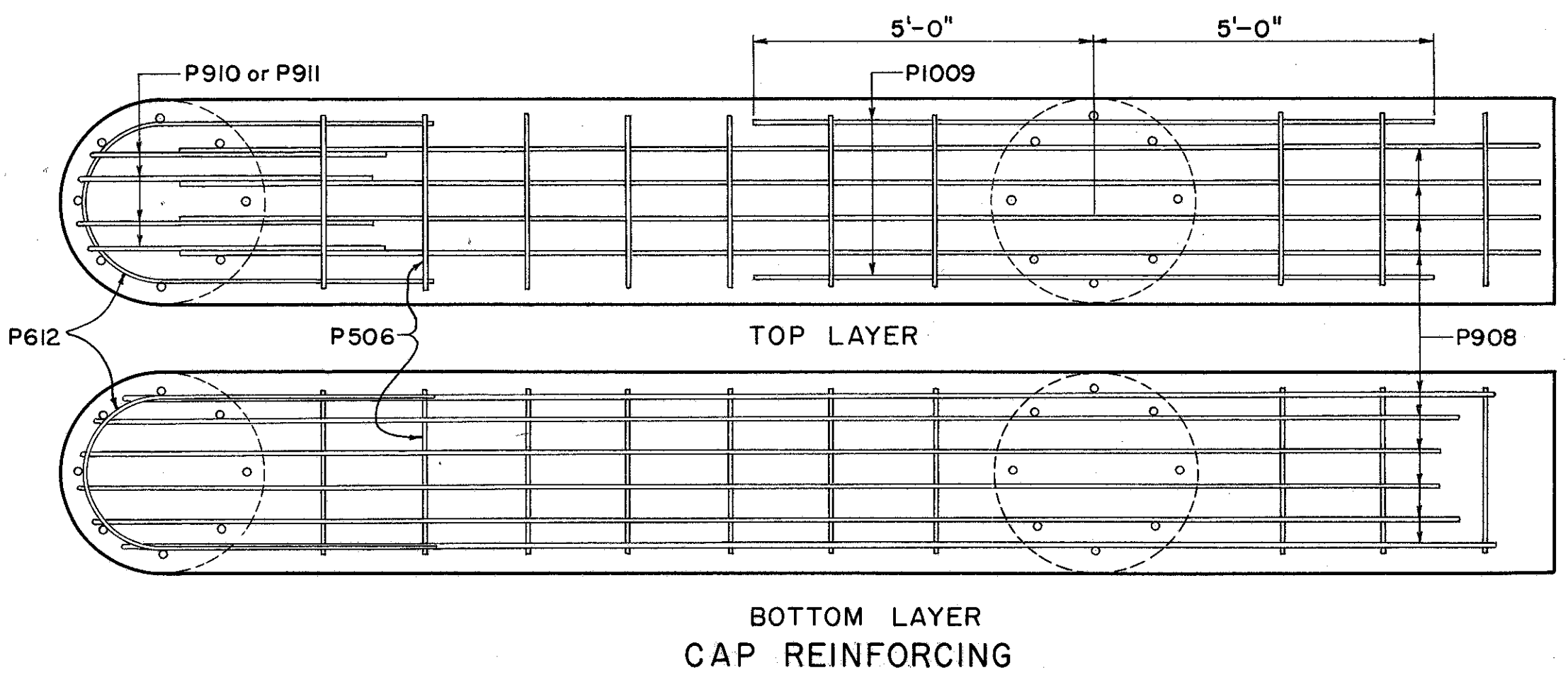
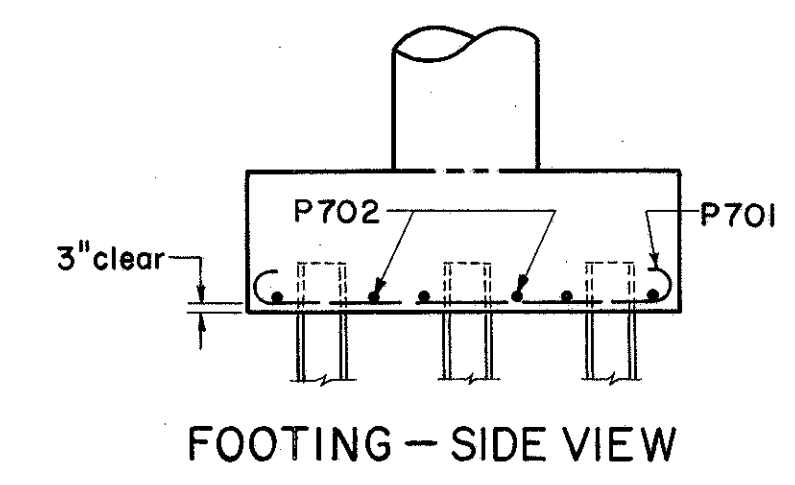
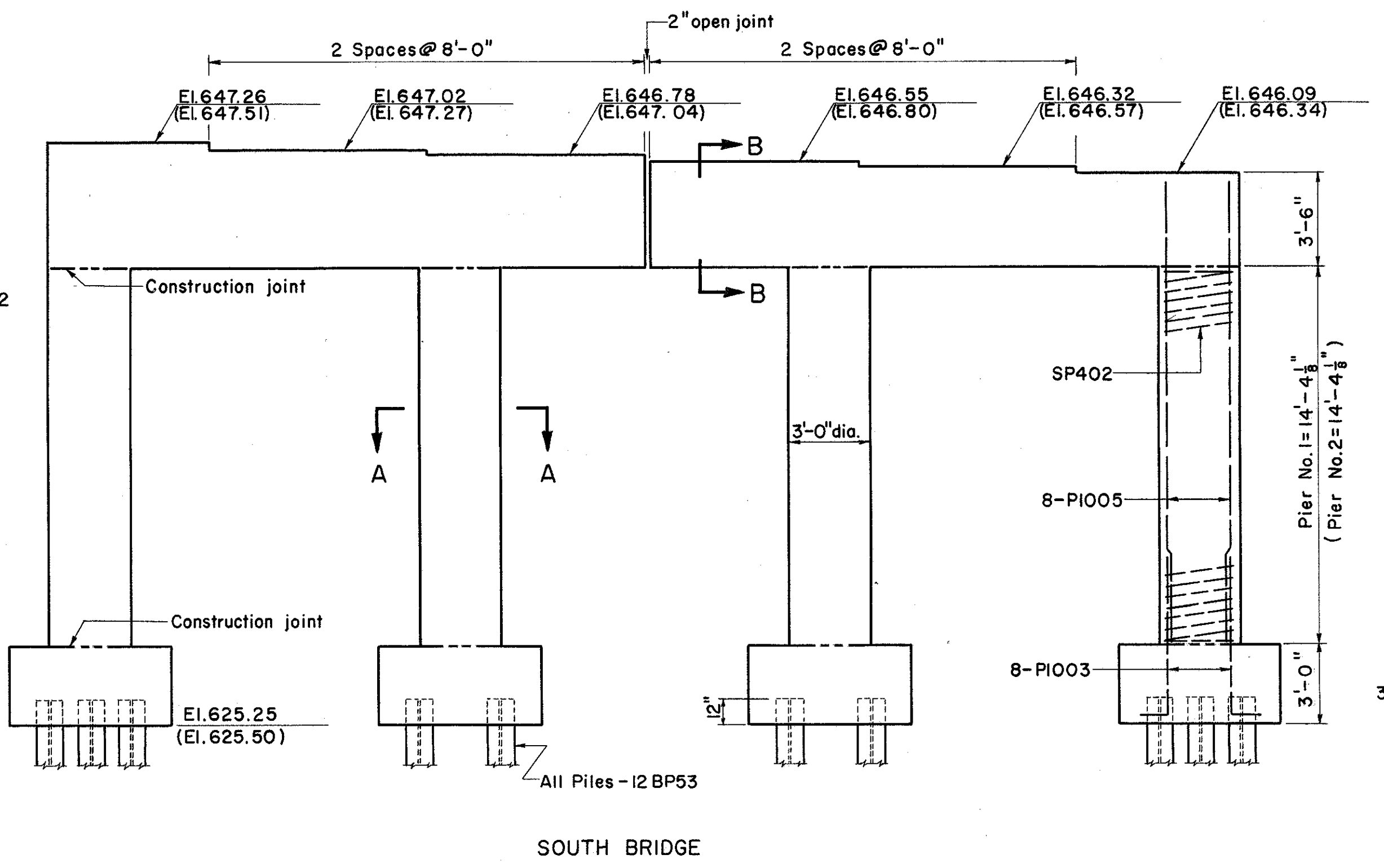
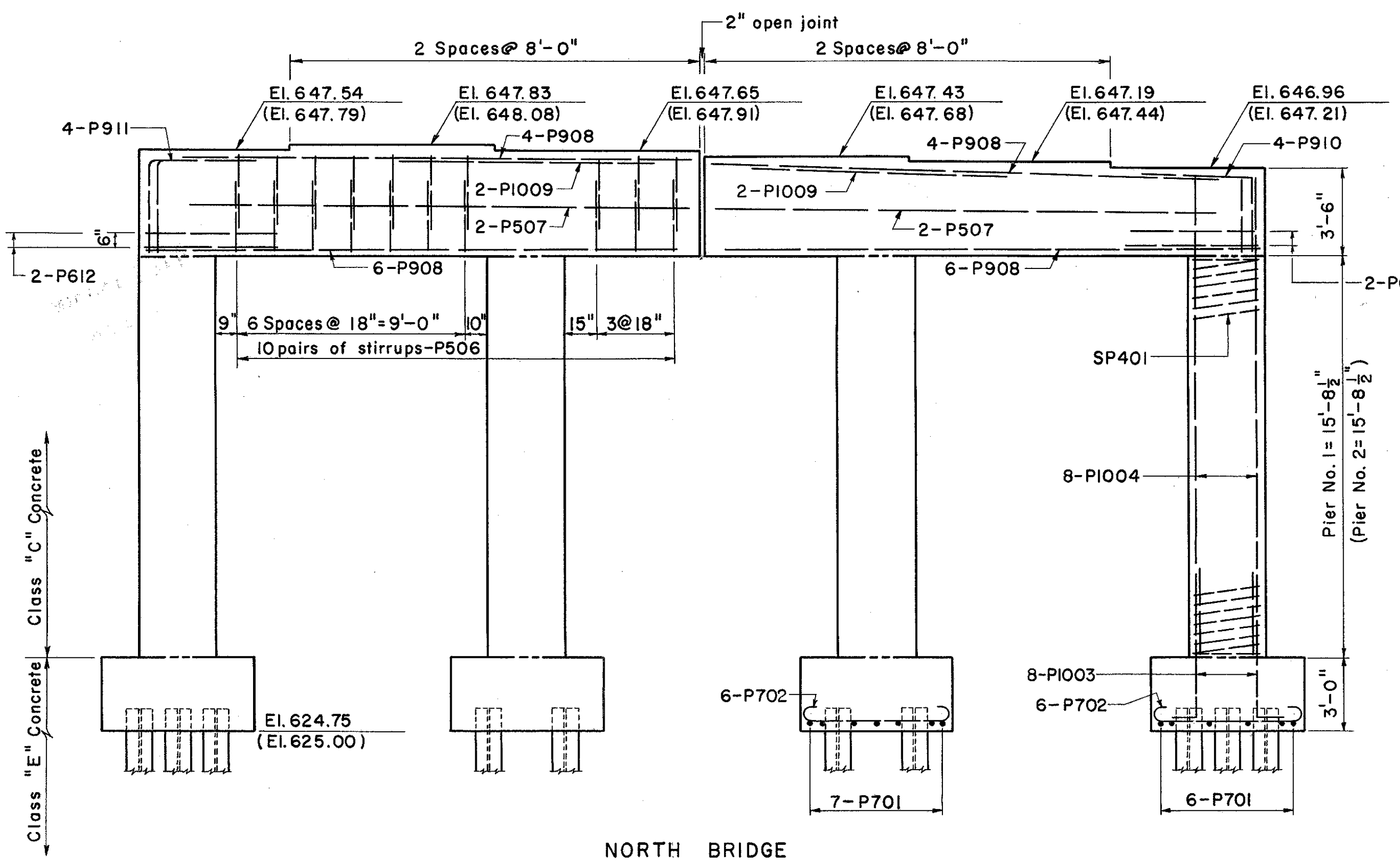
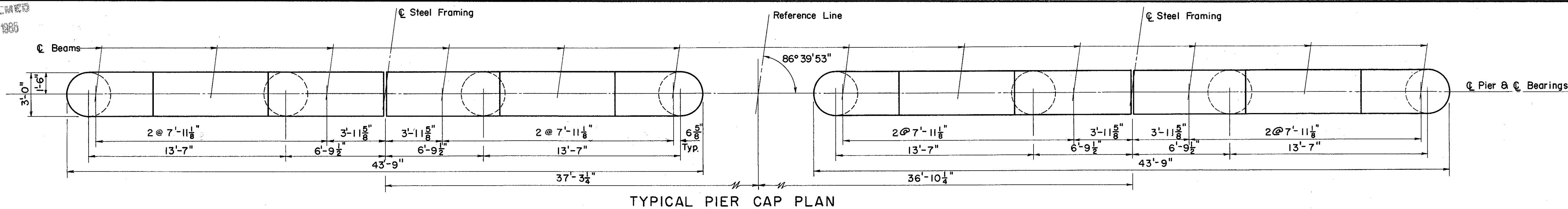
FED. RD. DIVISION	STATE	PROJECT
2	OHIO	

336
384

LAKE COUNTY
SEC. LAK-2-1422

NOTES

- Special care shall be taken in placing reinforcing steel in the bridge seat so that it will not interfere with the drilling of anchor bolt holes.
- All pier caps will have the same reinforcing steel as the one shown.
- All end column footings will have the same reinforcing steel as the one shown.
- All interior column footings will have the same reinforcing steel as the one shown.
- Where two elevations or dimensions are shown, those above the line are for Pier No. 1 and those shown below the line in parenthesis are for Pier No. 2.
- All columns for both piers of the North Bridge have the same reinforcing steel.
- All columns for both piers of the South Bridge have the same reinforcing steel.



PREPARED BY
CAPITOL ENGINEERING ASSOCIATES, DILLSBURG, PA.
FOR
STATE OF OHIO
DEPARTMENT OF HIGHWAYS
DIVISION OF DESIGN AND CONSTRUCTION
BUREAU OF BRIDGES

PIERS
BRIDGE NO. LAK-2-1541 L & R
RELOC. S.R. 2 OVER ST. CLAIR STREET
LAKE COUNTY

STA. 714 + 41.90

DESIGNED	DRAWN	TRACED	CHECKED	REVIEWED DATE	REVISED
JLN	JLN	SUB			