

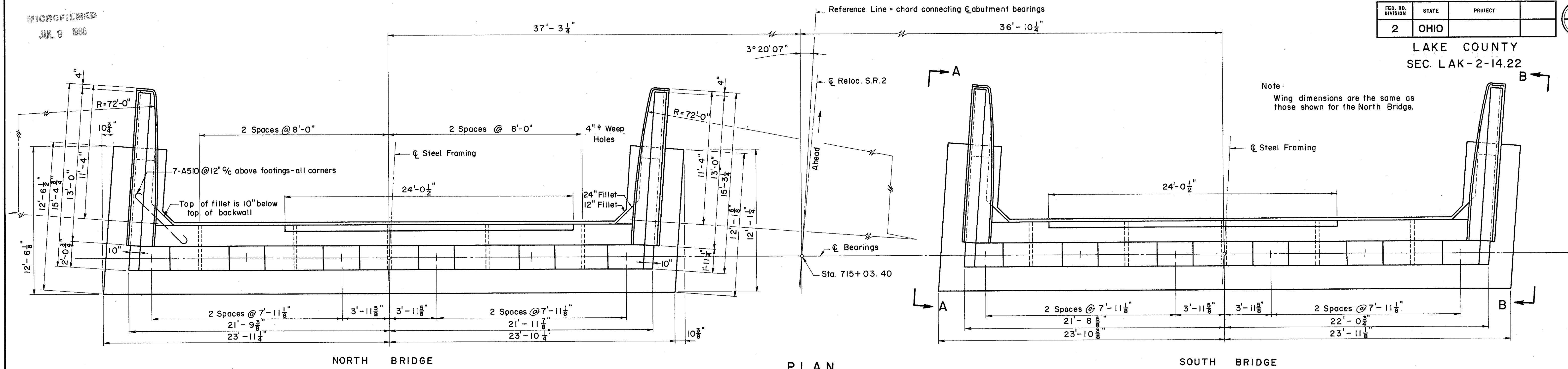
MICROFILMED  
JUL 9 1966

FED. RD. DIVISION	STATE	PROJECT
2	OHIO	

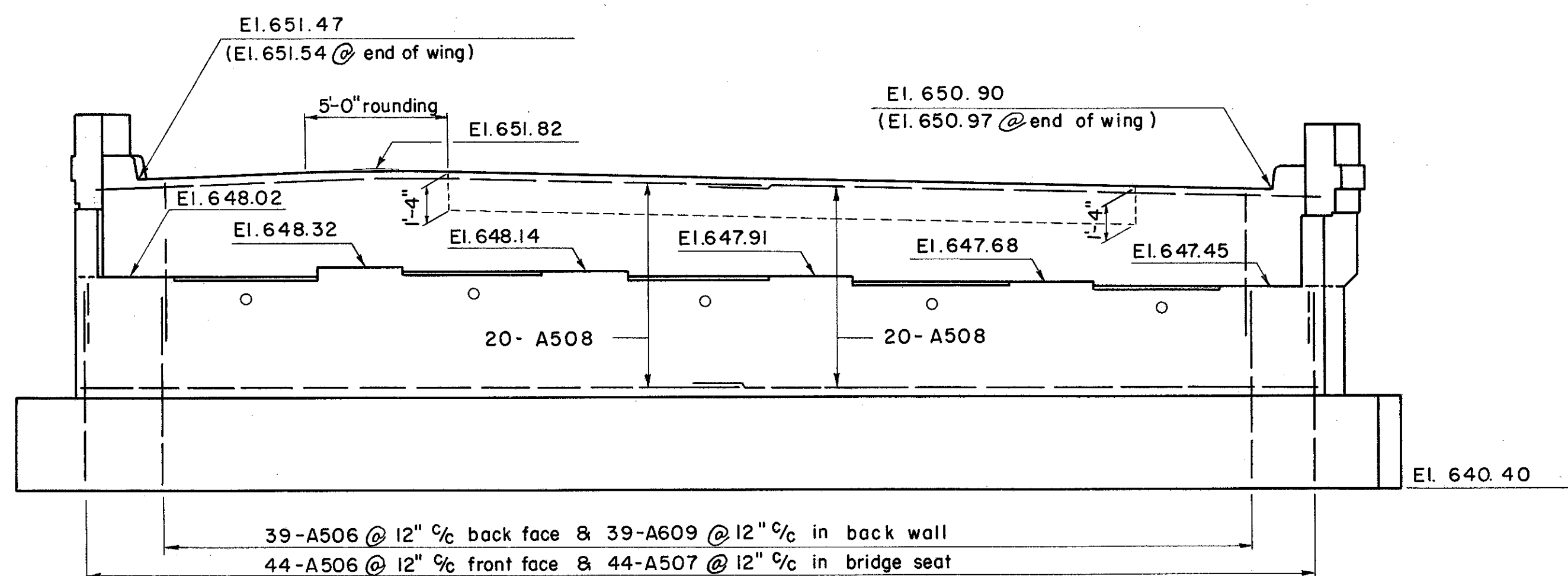
334  
384

LAKE COUNTY  
SEC. LAK-2-14.22

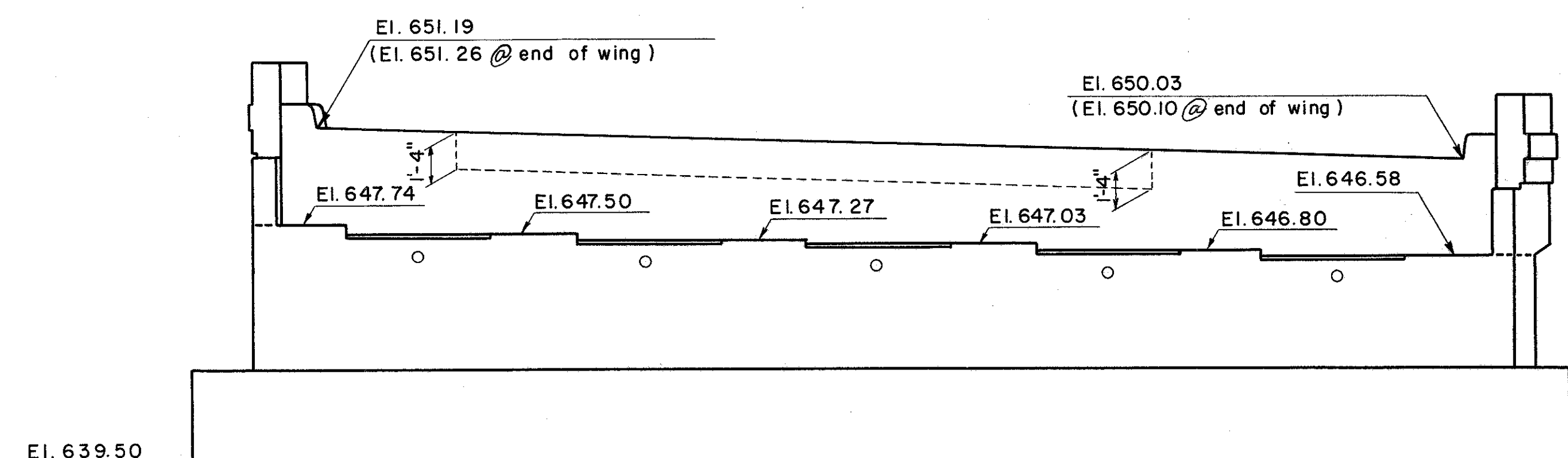
Note:  
Wing dimensions are the same as  
those shown for the North Bridge.



PLAN



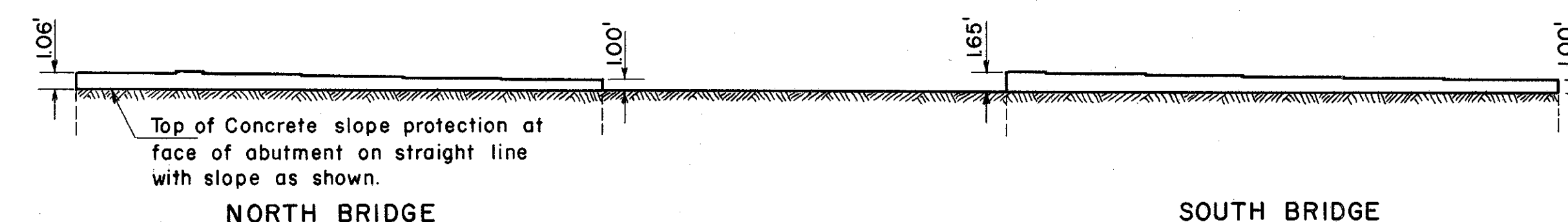
NORTH BRIDGE



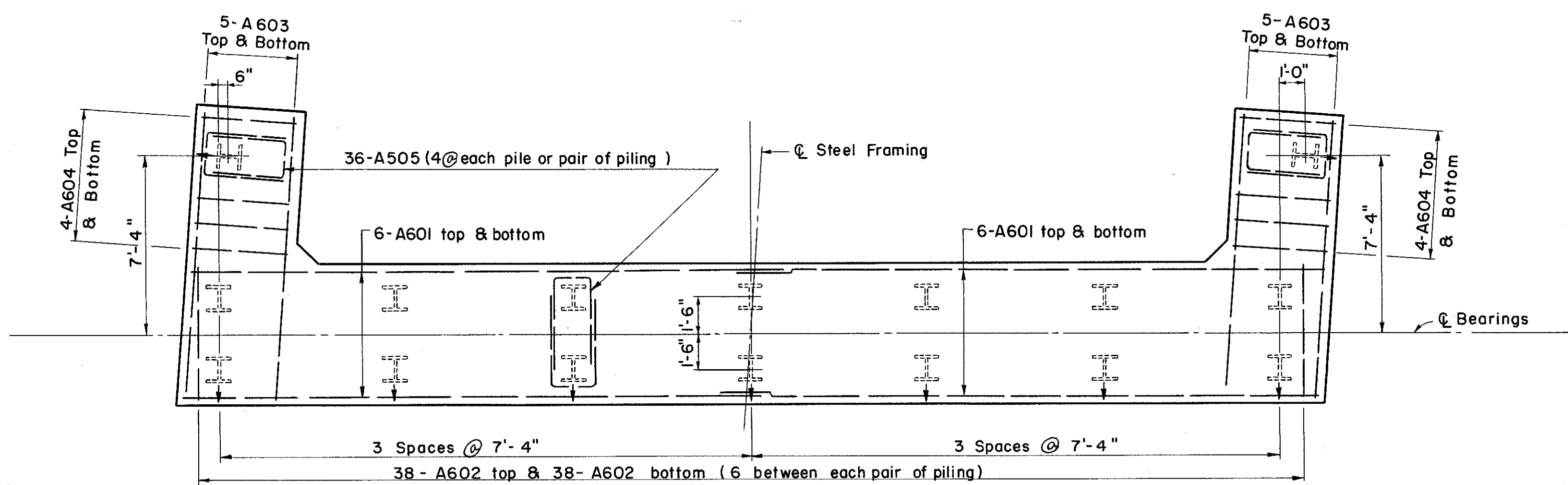
Note:  
Reinforcing steel is the same as that shown for the North Bridge

SOUTH BRIDGE

ELEVATION



ELEVATION  
SHOWING TOP OF CONC. SLOPE PROTECTION



PILE LAYOUT & FOOTING REINFORCING - ABUTMENT NO. 2  
BOTH NORTH & SOUTH BRIDGE

Note:  
All piles shown thus (∩) to be battered 1:4  
All piles - 12 BP 53

PREPARED BY  
CAPITOL ENGINEERING ASSOCIATES, DILLSBURG, PA.  
FOR

STATE OF OHIO  
DEPARTMENT OF HIGHWAYS  
DIVISION OF DESIGN AND CONSTRUCTION  
BUREAU OF BRIDGES

ABUTMENT # 2  
BRIDGE NO. LAK-2-1541 L & R  
RELOC. S. R. 2 OVER ST. CLAIR STREET  
LAKE COUNTY  
STA. 714 + 41.90

DESIGNED	DRAWN	TRACED	CHECKED	REVIEWED DATE	REVISD
JLM	JLM	SUB		3-15-60	