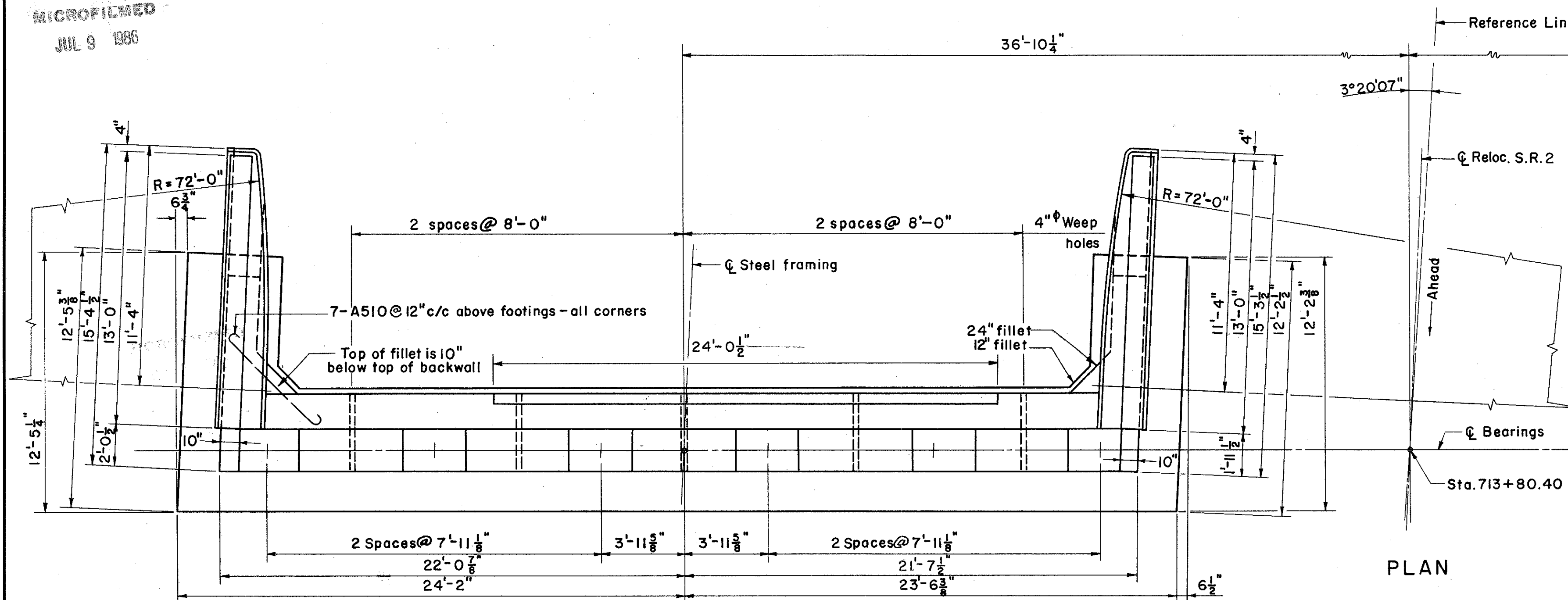


MICROFILMED
JUL 9 1986

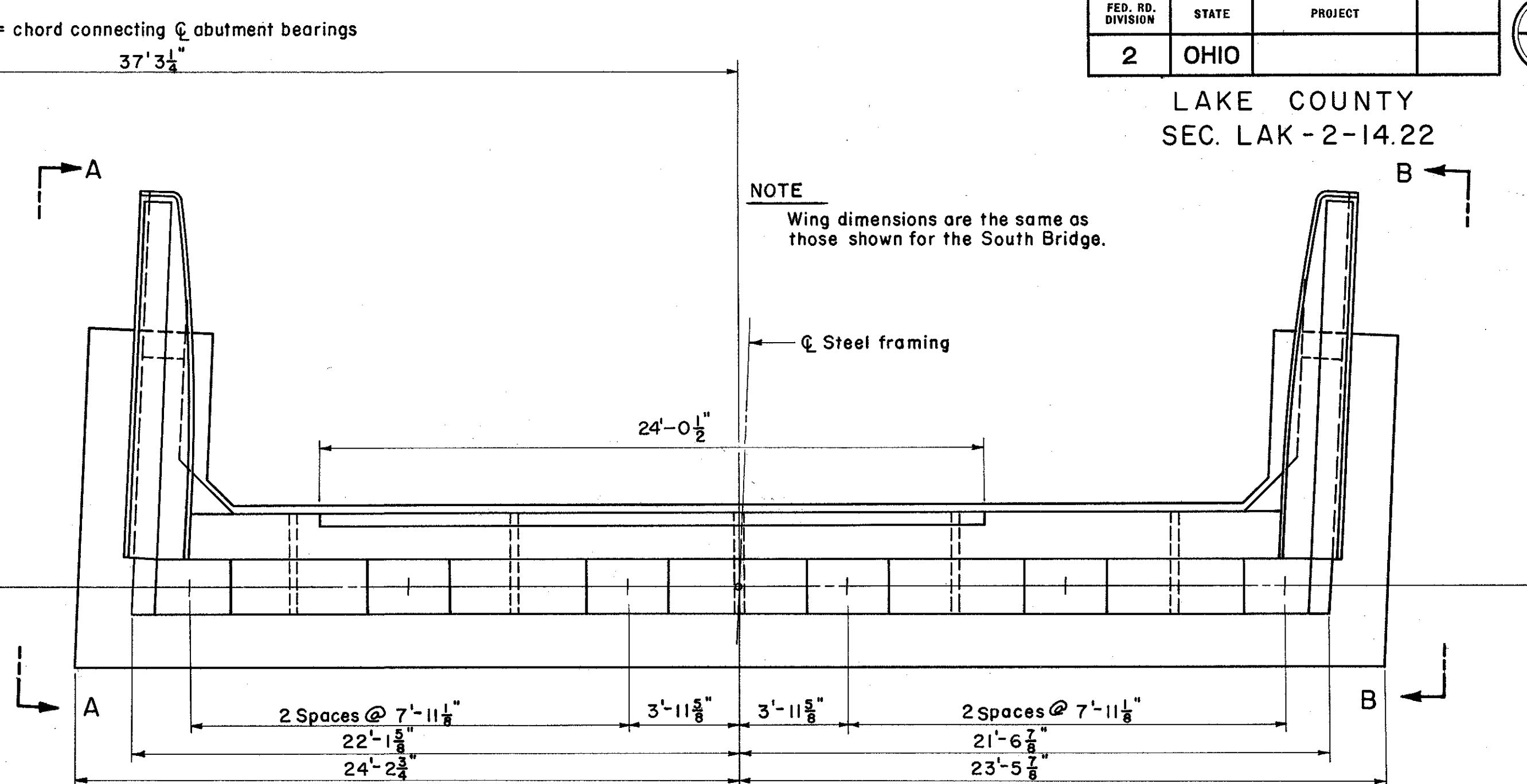
FED. RD. DIVISION	STATE	PROJECT	
2	OHIO		

333
384

LAKE COUNTY
SEC. LAK-2-14.22



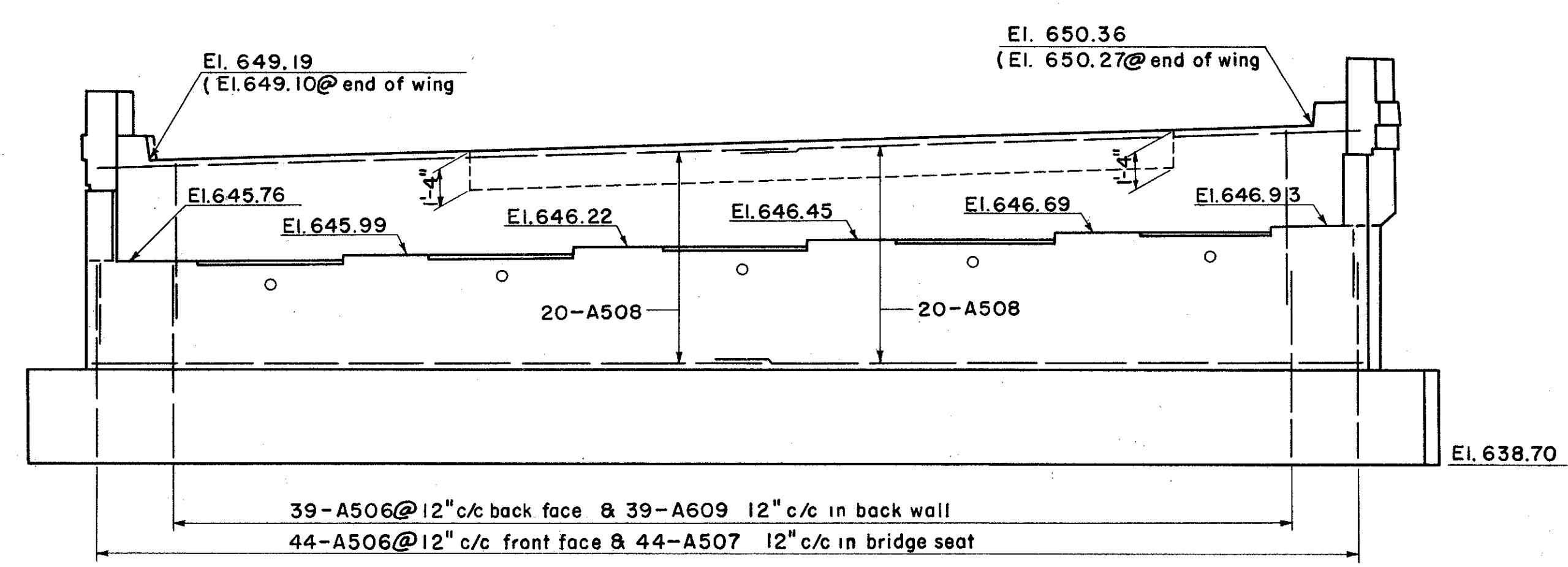
PLAN



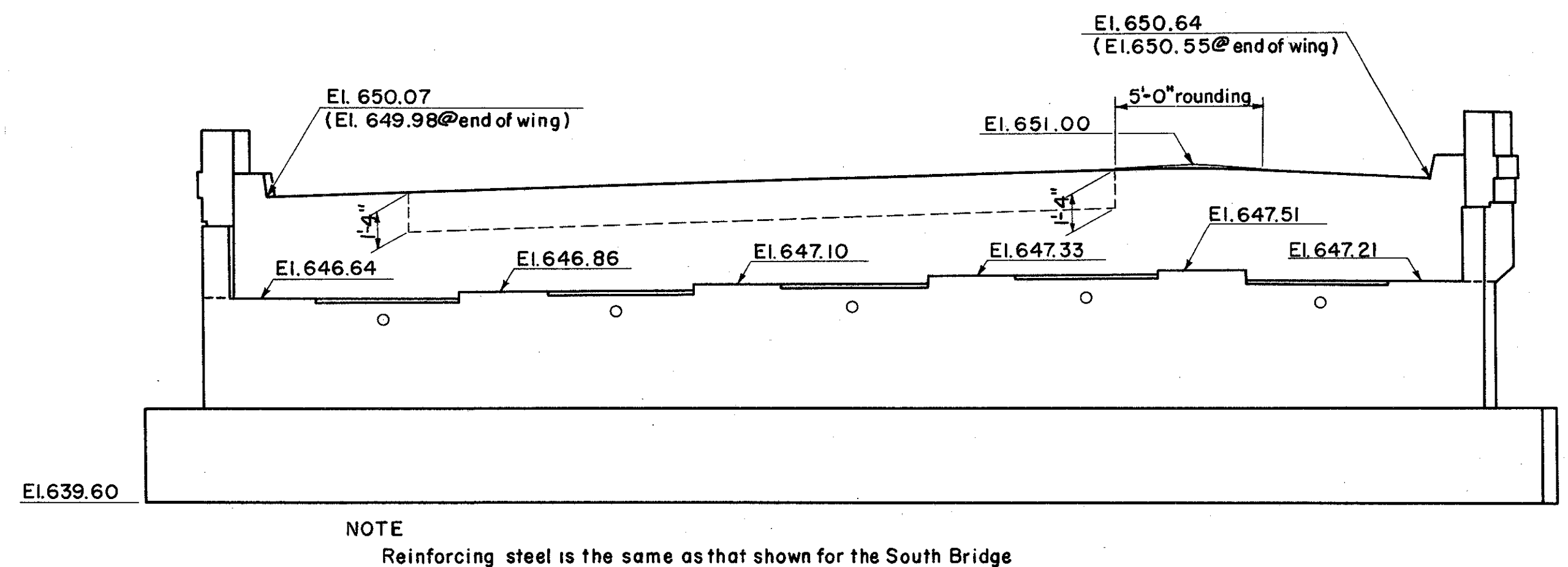
NOTE
Wing dimensions are the same as those shown for the South Bridge.

NORTH BRIDGE

SOUTH BRIDGE



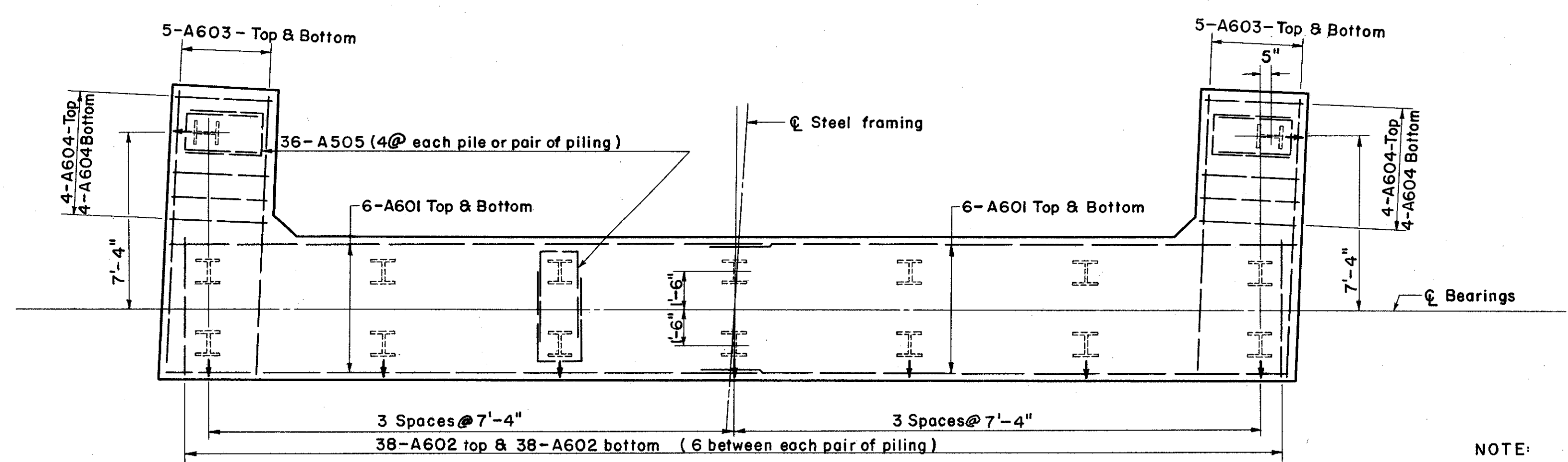
SOUTH BRIDGE



NOTE
Reinforcing steel is the same as that shown for the South Bridge

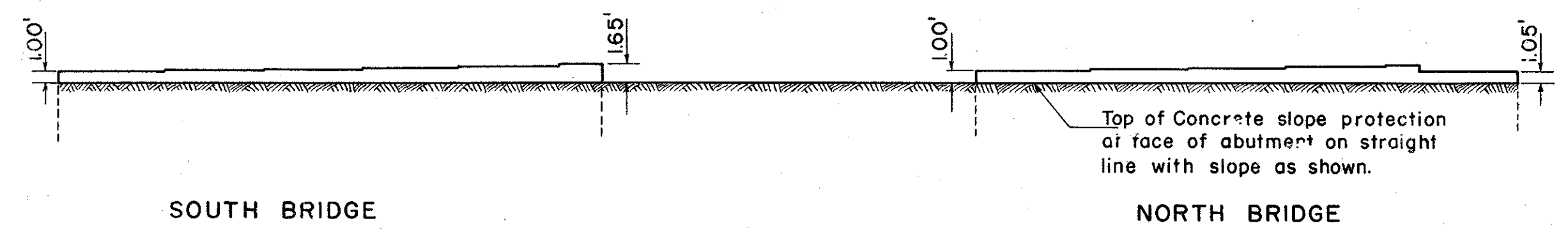
NORTH BRIDGE

ELEVATION



PILE LAYOUT & FOOTING REINFORCING
BOTH NORTH & SOUTH BRIDGE

NOTE:
All piles shown thus (†) to be battered 1:4
All piles - 12 BP53



ELEVATION
SHOWING TOP OF CONC. SLOPE PROTECTION

PREPARED BY CAPITOL ENGINEERING ASSOCIATES, DILLSBURG, PA. FOR					
STATE OF OHIO DEPARTMENT OF HIGHWAYS DIVISION OF DESIGN AND CONSTRUCTION BUREAU OF BRIDGES					
ABUTMENT # 1 BRIDGE NO. LAK-2-1541 L & R RELOC. S.R. 2 OVER ST. CLAIR STREET LAKE COUNTY					
STA. 714 + 41.90					
DESIGNED	DRAWN	TRACED	CHECKED	REVISED	DATE
JLN	JLN	JLN			