

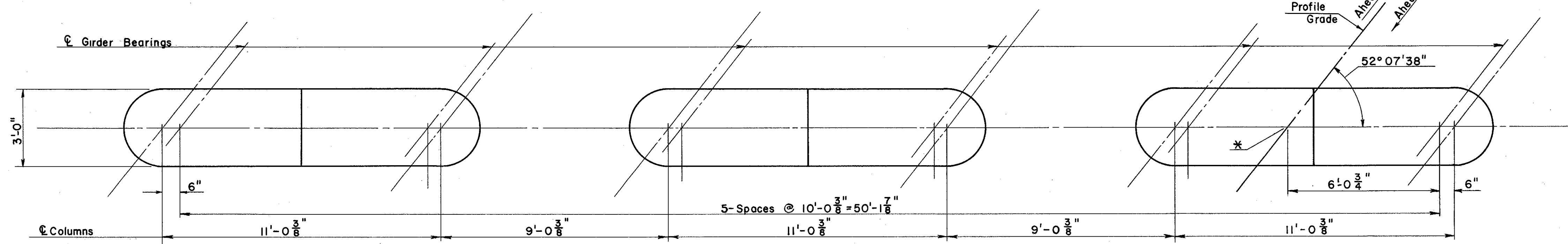
MICROFILMED
JUL 9 1986

FED. RD. DIVISION	STATE	PROJECT	
2	OHIO		

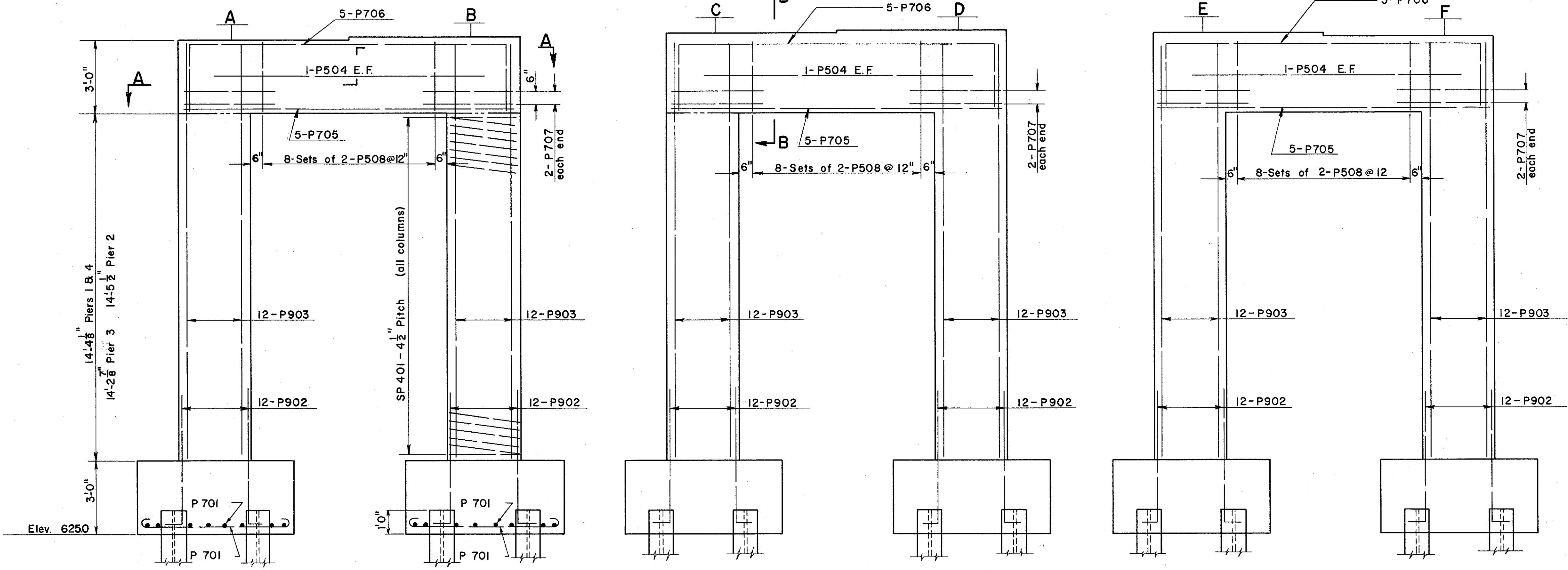
326
384

LAKE COUNTY
SEC. LAK-2-14.22

POINT OF ELEVATION	A	B	C	D	E	F
PIER-1*Sta. 698+61.77	645.34	645.47	645.59	645.69	645.57	645.44
PIER-2*Sta. 699+21.27	645.46	645.58	645.70	645.79	645.66	645.53
PIER-3*Sta. 698+95.99	645.32	645.45	645.58	645.68	645.56	645.44
PIER-4*Sta. 699+55.49	645.34	645.48	645.61	645.72	645.60	645.49

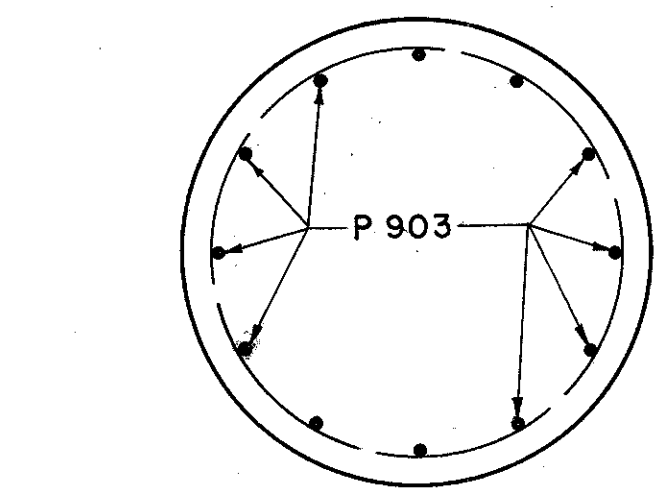
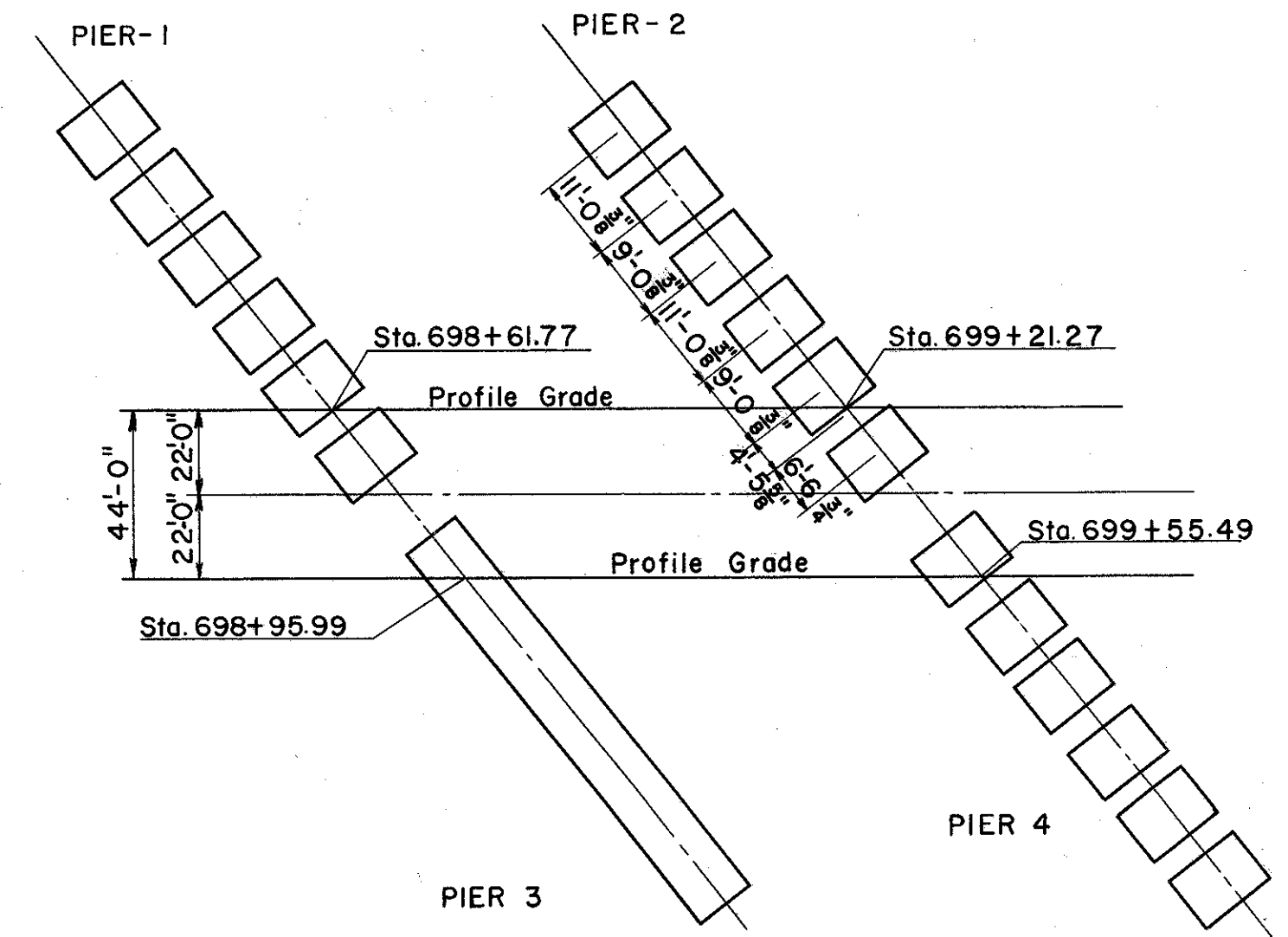


CAP PLAN



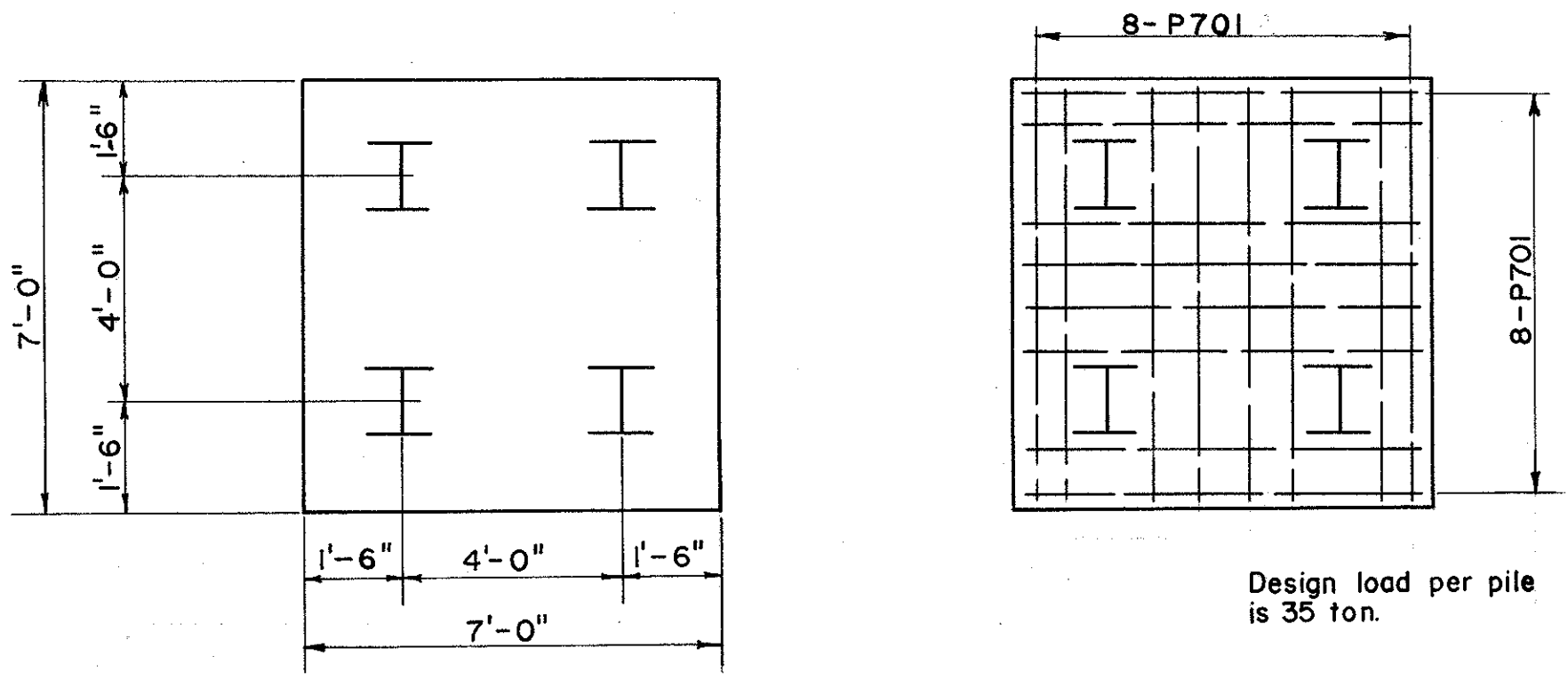
ELEVATION

Piers 1, 2 & 4
Pier 3 above top of footing.



TYPICAL COLUMN SECTION

Reinforcing shall have a minimum of 3" cover in the footings and 2" elsewhere.
Care shall be taken in placing reinforcing in cap so as not to interfere with the drilling of anchor bolt holes.
E.F. Denotes each face.



FOOTING PLAN
PIERS 1, 2 & 4

PREPARED BY CAPITOL ENGINEERING ASSOCIATES, DILLSBURG, PA. FOR						
STATE OF OHIO DEPARTMENT OF HIGHWAYS DIVISION OF DESIGN AND CONSTRUCTION BUREAU OF BRIDGES						
PIERS BRIDGE NO. LAK-2-1512 L & R RELOC. S. R. 2 OVER SANFORD STREET LAKE COUNTY						
STA. 699 + 08.63						
DESIGNED	DRAWN	TRACED	CHECKED	REVIEWED	DATE	REVISED
h	R	J. D. M. D. M. V.	M. C. C.			