

LAKE COUNTY  
SEC. LAK-2-14.22

NOTES:

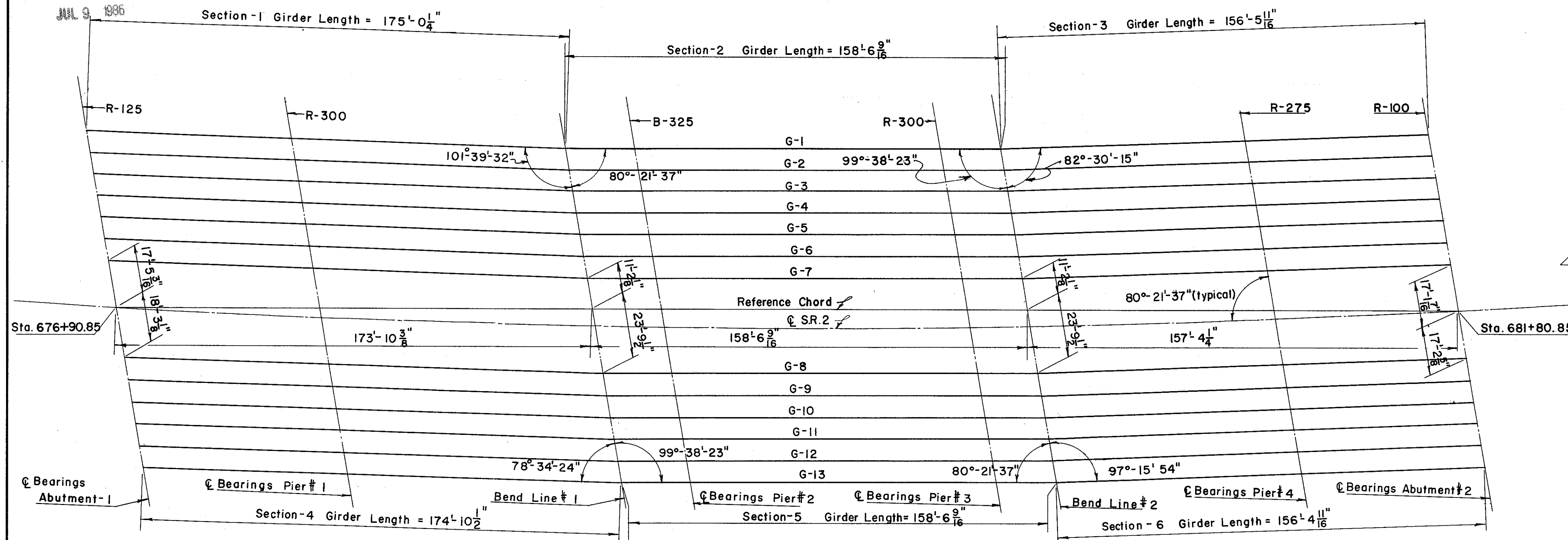
REFERENCE shall be made to Standard Drawing CSB-2-56, sheets 2 & 3 of 6, revised 2-2-59 for details of end dams, gutters, pipe drains, curb plates, crossframes and end crossframes.

REFERENCE shall be made to Standard Drawing RB-1-55 revised 2-2-59 for details of rockers and bolsters. For B-325 dimensions, see chart this sheet.

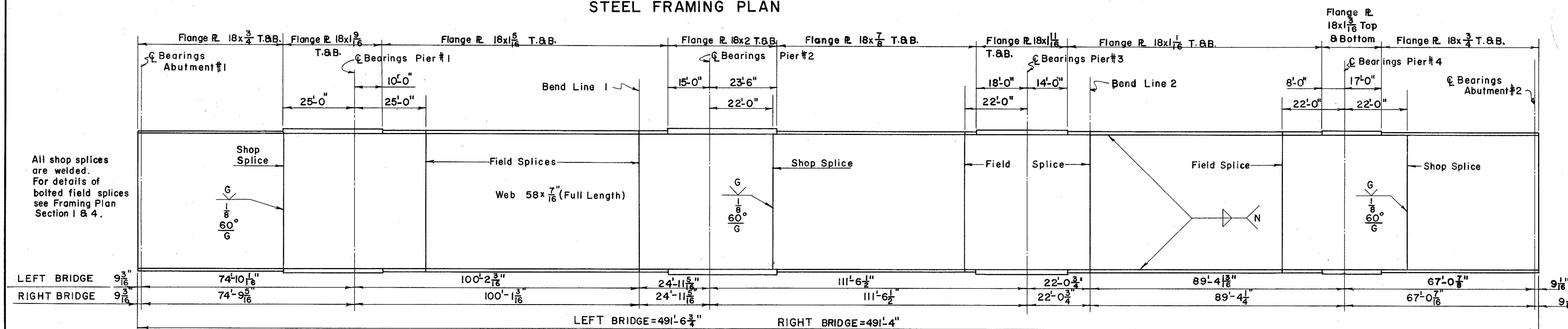
STIFFENERS shall be clipped to clear flange-web welds as required.

V-GROOVE BUTT WELDS at flange splices shall be finished smooth and flush with the base material on all surfaces.

WELDING OF STRUCTURAL STEEL shall be Class "A" except as otherwise shown. Welds shown as field welds may, at the option of the contractor, be made in the shop.



STEEL FRAMING PLAN



TYPICAL GIRDER DETAIL

Use 5/16" fillet weld for flange thickness up to 1 1/2"  
 Use 3/8" fillet weld for flange thickness over 1 1/2"

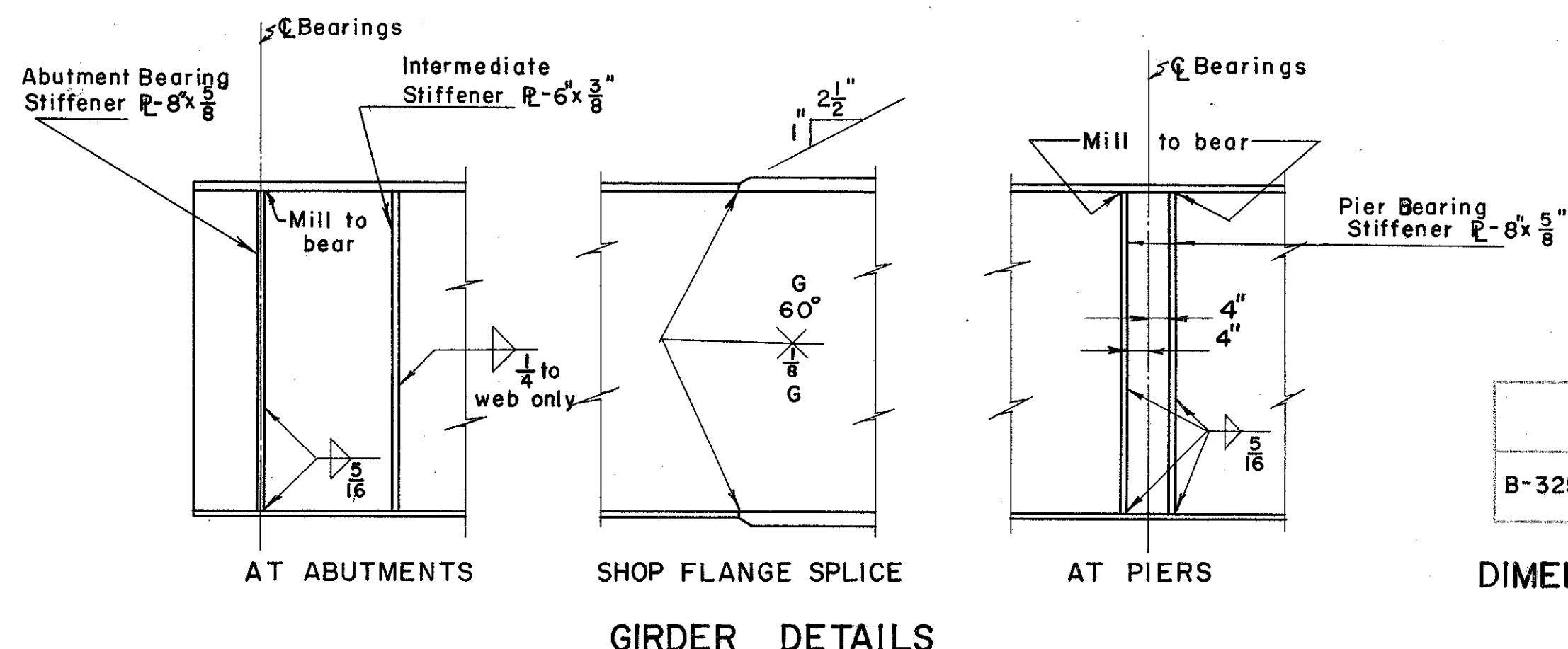
LAYOUT PROCEDURE

All bearing C's and bend lines are parallel. The girders in Sections 2 & 5 (center sections Left & Right Bridge) are parallel to the reference chord.

Girders in remaining sections are parallel within each section.

All girders are spaced equally along bearing C's.

DEFLECTION AND CONVEXITY (as listed below *)	SPAN - 1		SPAN - 2		SPAN - 3		SPAN - 4		SPAN - 5	
	1"	1"	1"	1"	1"	1"	1"	1"	1"	1"
Deflection due to weight of steel	1/16	1/16	1/8	1/4	1/8	1/16	3/16	1/16	1/16	1/16
Deflection due to remaining dead load	1/4	3/16	1/4	1/16	1/4	1/4	5/8	1/4	1/2	1/4
Convexity required for vertical curve	5/16	1/4	9/16	7/8	9/16	1/4	3/8	1/4	1/4	1/8
Sum of deflection and convexity *	5/8	1/2	15/16	1 13/16	15/16	9/16	1 3/16	9/16	9/16	5/8
Required Camber	0	0	1"	1 1/8"	1"	0	1 1/4"	0	1 1/8"	0



A	B	C	F	H	K	L	R	T	Y	
B-325	4"	21"	4"	1"	19 7/8"	15"	29"	13"	3 1/4"	1 15/16"

DIMENSIONS FOR SPECIAL BOLSTER (B-325)

PREPARED BY  
 CAPITOL ENGINEERING ASSOCIATES, DILLSBURG, PA.  
 FOR  
 STATE OF OHIO  
 DEPARTMENT OF HIGHWAYS  
 DIVISION OF DESIGN AND CONSTRUCTION  
 BUREAU OF BRIDGES

STEEL FRAMING PLAN  
 BRIDGE NO. LAK-2-1471 L&R  
 RELOC. S. R. 2 OVER B.&O. R.R. - S.R. 283  
 LAKE COUNTY  
 STA. 680 + 56.97

DESIGNED L.C.M.	DRAWN [Signature]	TRACED RLK	CHECKED mcp	REVIEWED DATE	REVISED
--------------------	----------------------	---------------	----------------	---------------	---------