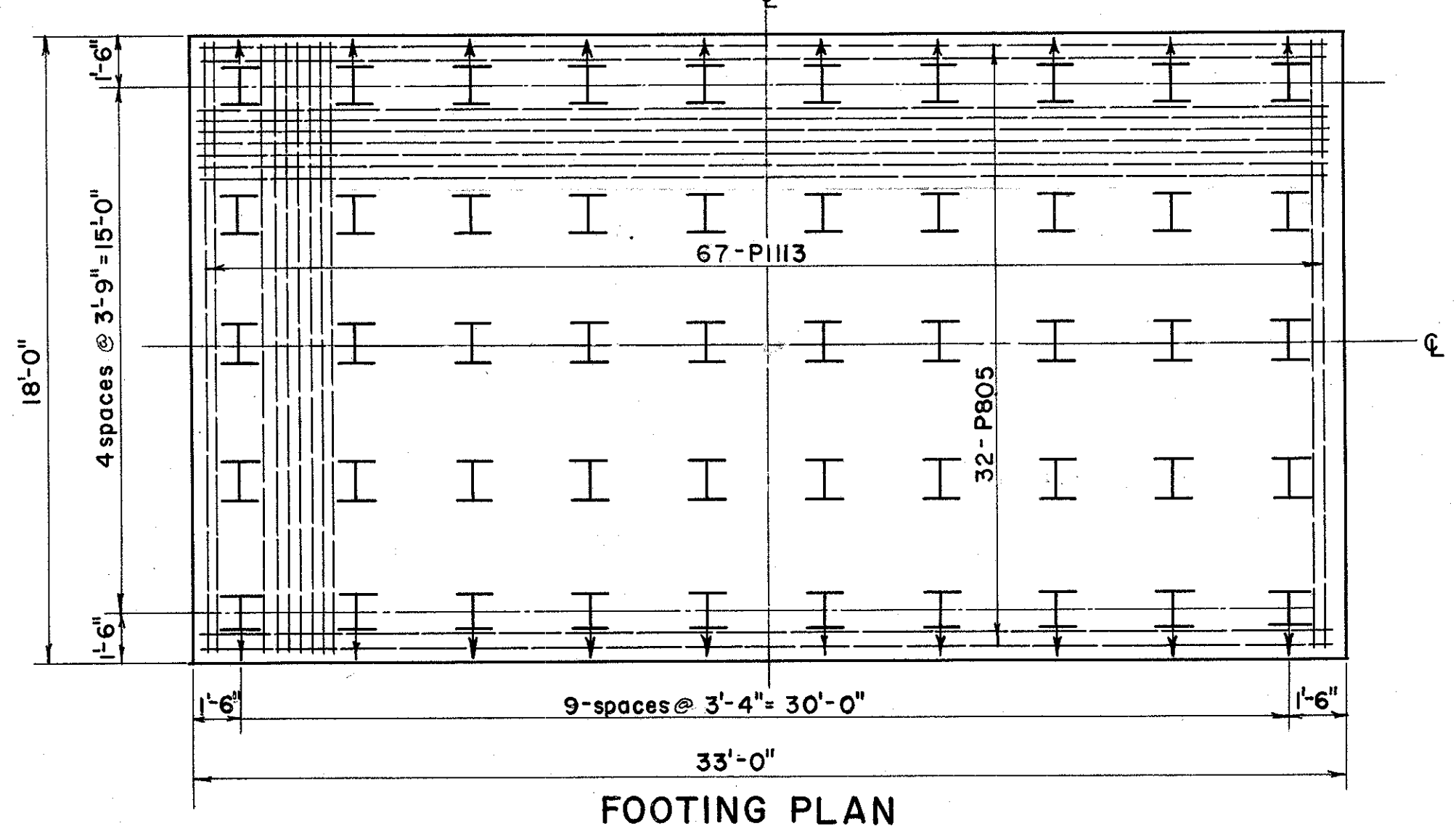
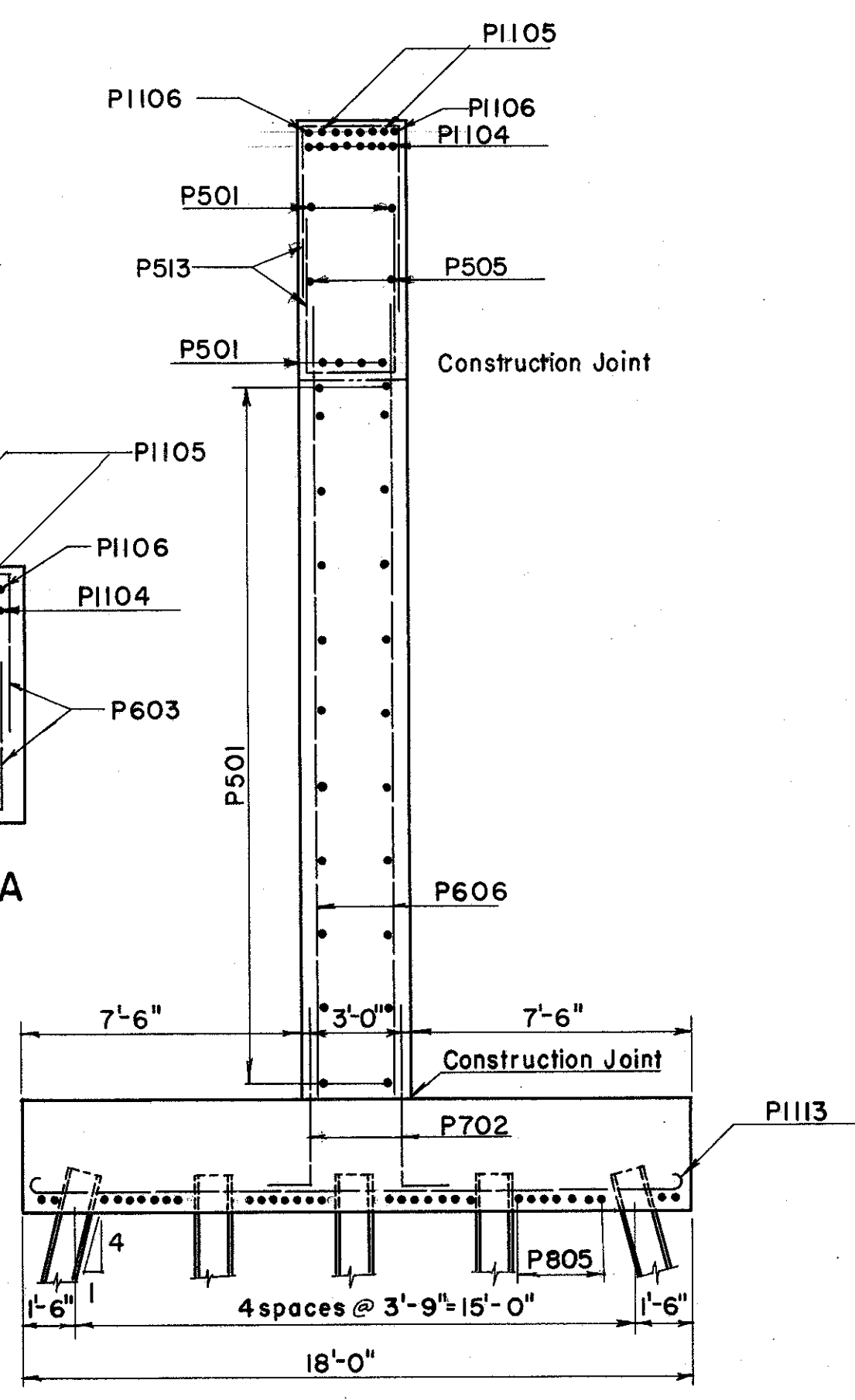
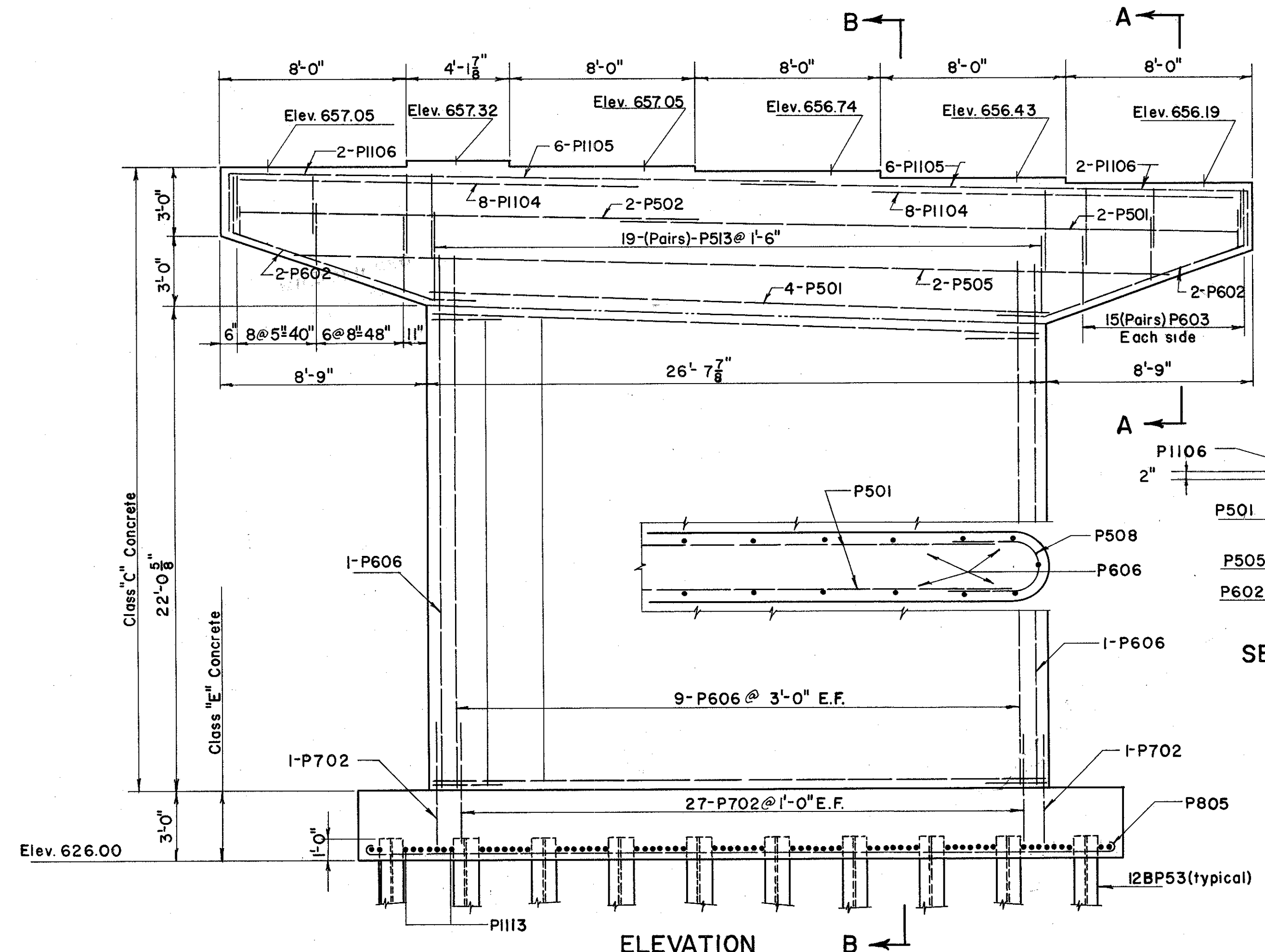
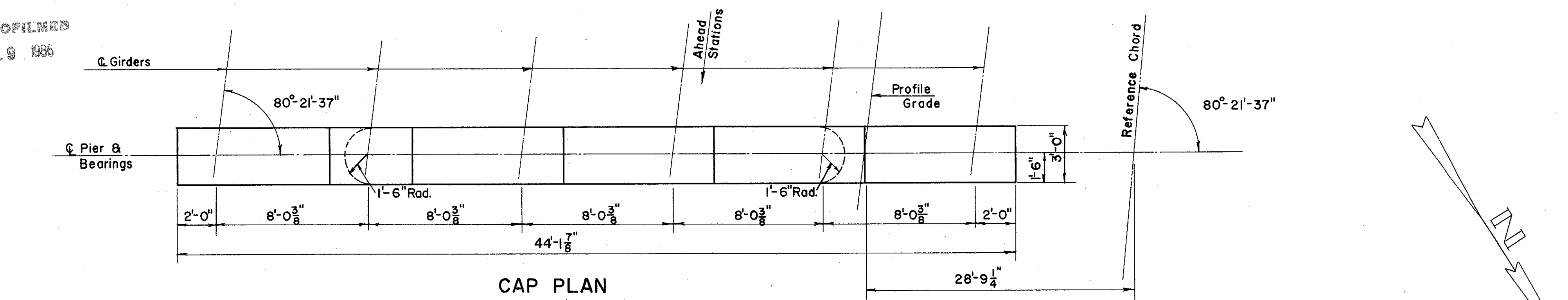


MICROFILMED
JUL 9 1986

FED. RD. DIVISION	STATE	PROJECT
2	OHIO	

310
384

LAKE COUNTY
SEC. LAK-2-14.22



For notes, footing and anchor bolt layout see drawings Pier #1 and #2, Left Bridge.

PREPARED BY CAPITOL ENGINEERING ASSOCIATES, DILLSBURG, PA. FOR					
STATE OF OHIO DEPARTMENT OF HIGHWAYS DIVISION OF DESIGN AND CONSTRUCTION BUREAU OF BRIDGES					
PIER #2 RIGHT BRIDGE BRIDGE NO. LAK-2-1471 L. & R. RELOC. S.R. 2 OVER B.&O. RR. - S.R. 283 LAKE COUNTY					
STA. 680 + 56.97					
DESIGNED #CM	DRAWN MCP	TRACED RLL	CHECKED MCP DRT	REVIEWED DATE	REVISED