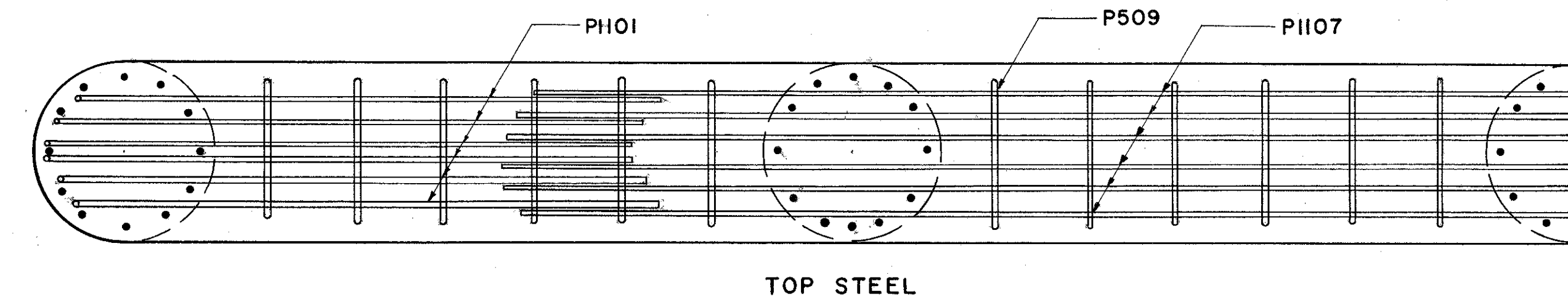
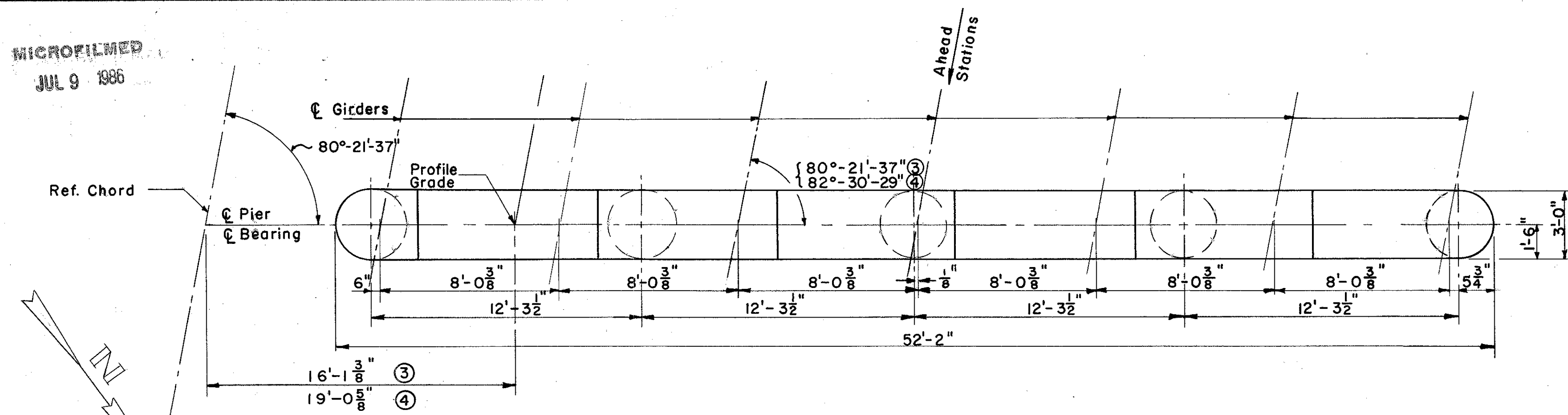


MICROFILMED
JUL 9 1986

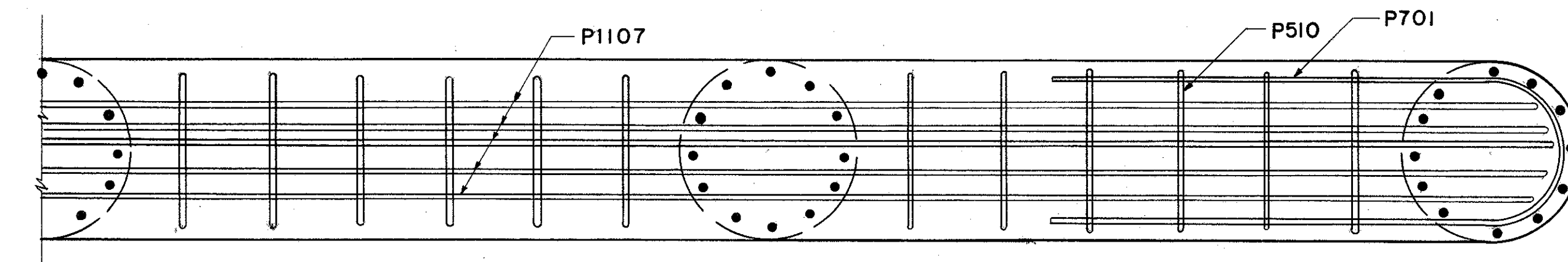
FED. RD. DIVISION	STATE	PROJECT
2	OHIO	

308
384

LAKE COUNTY
SEC. LAK-2-14.22

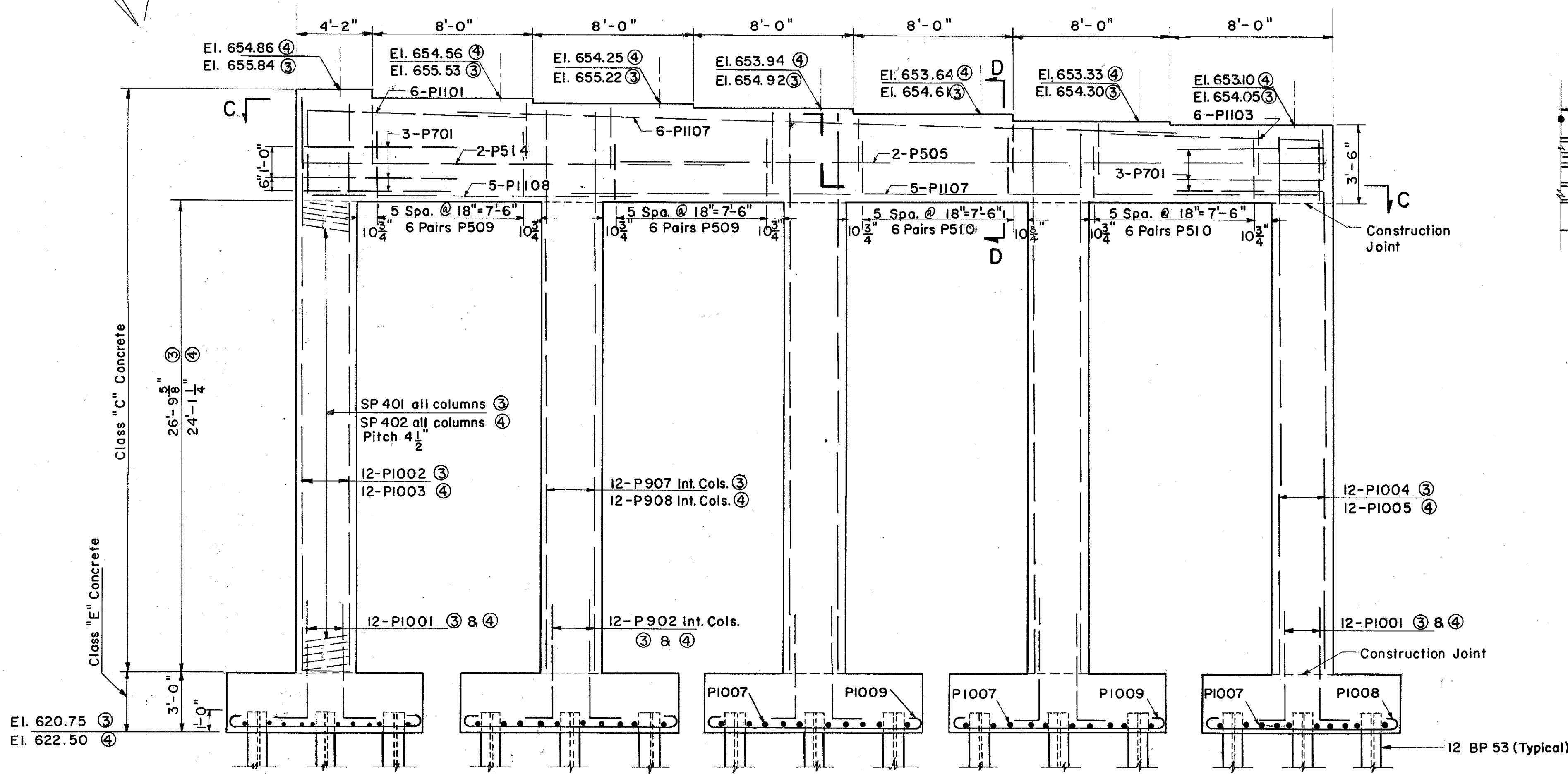


TOP STEEL

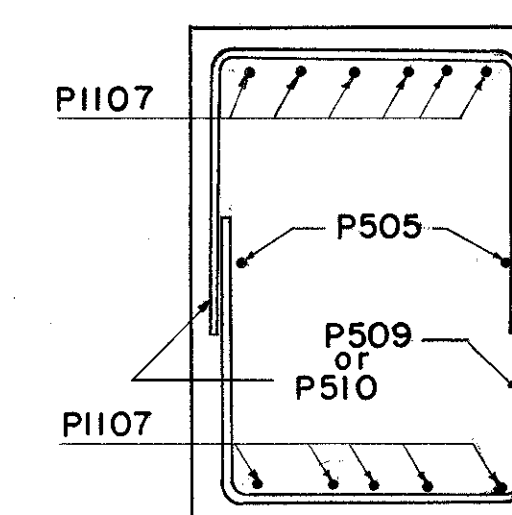


BOTTOM STEEL

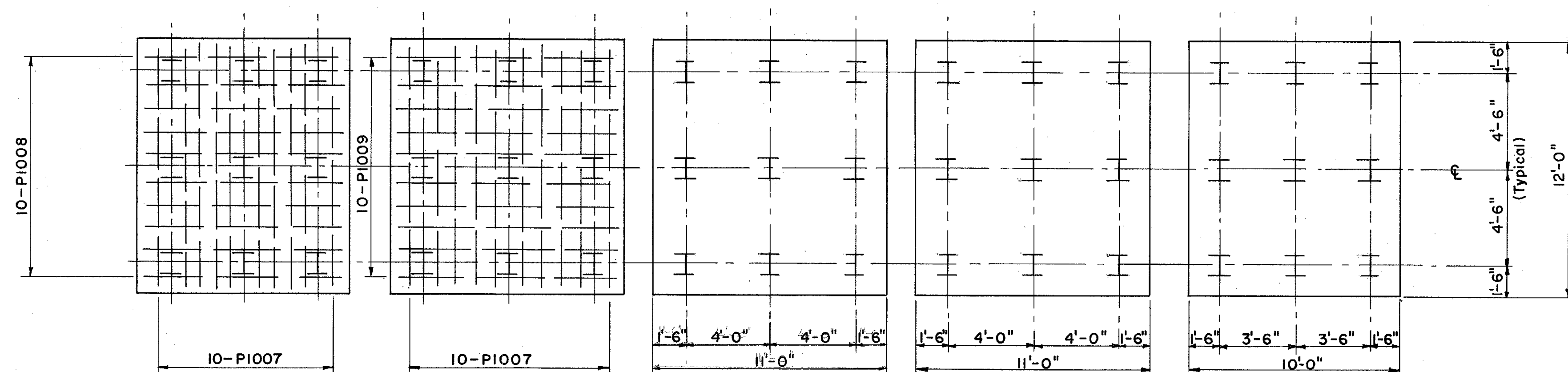
SECTION C-C



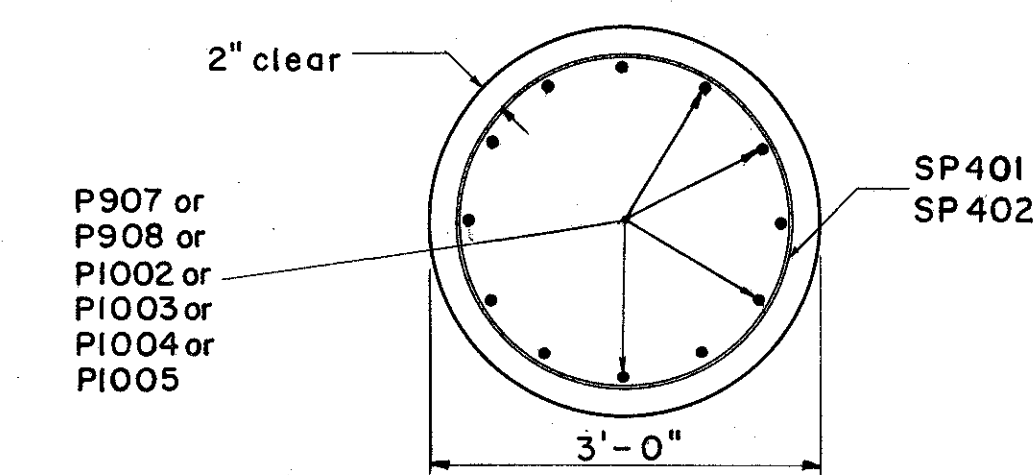
ELEVATION



SECTION D-D



FOOTING PLAN



TYPICAL COLUMN SECTION

- NOTES:
- Reinforcing steel in the piercap is identical for both Piers.
 - For additional notes and Footing Layout see drawing Pier No. 1 Left Bridge.
 - ③ indicates Pier #3 Left Bridge.
 - ④ indicates Pier #4 Left Bridge.

PREPARED BY
CAPITOL ENGINEERING ASSOCIATES, DILLSBURG, PA.
FOR

STATE OF OHIO
DEPARTMENT OF HIGHWAYS
DIVISION OF DESIGN AND CONSTRUCTION
BUREAU OF BRIDGES

PIER #3 & #4 LEFT BRIDGE
BRIDGE NO. LAK-2-1471 L. & R.
RELOC. S.R. 2 OVER B&O.R.R.-S.R. 283
LAKE COUNTY

STA. 680 + 56.97

DESIGNED	DRAWN	TRACED	CHECKED	REVIEWED	DATE	REVISED