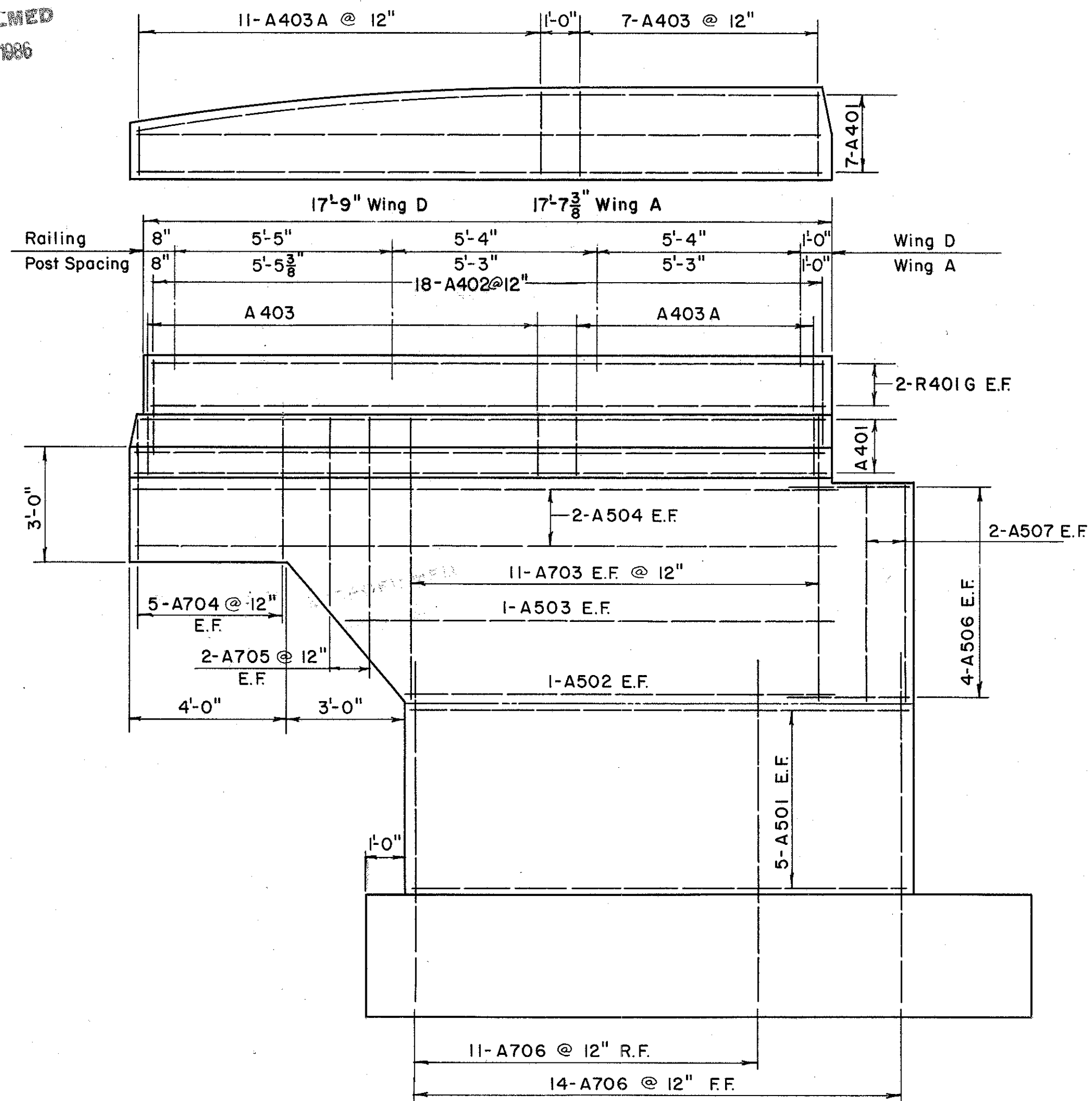


MICROFILMED  
JUL 9 1986

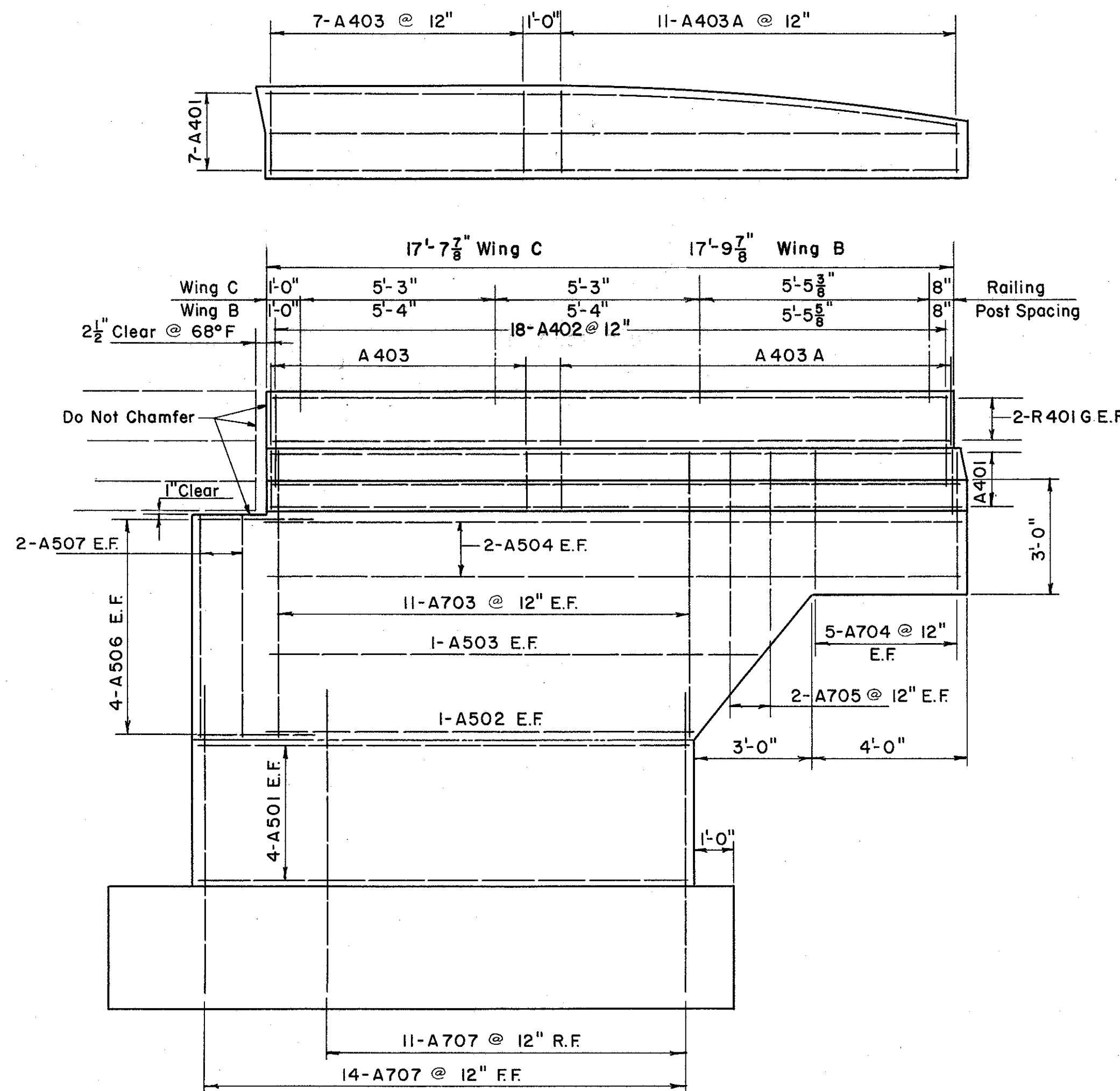
FED. RD. DIVISION	STATE	PROJECT
2	OHIO	

305  
384

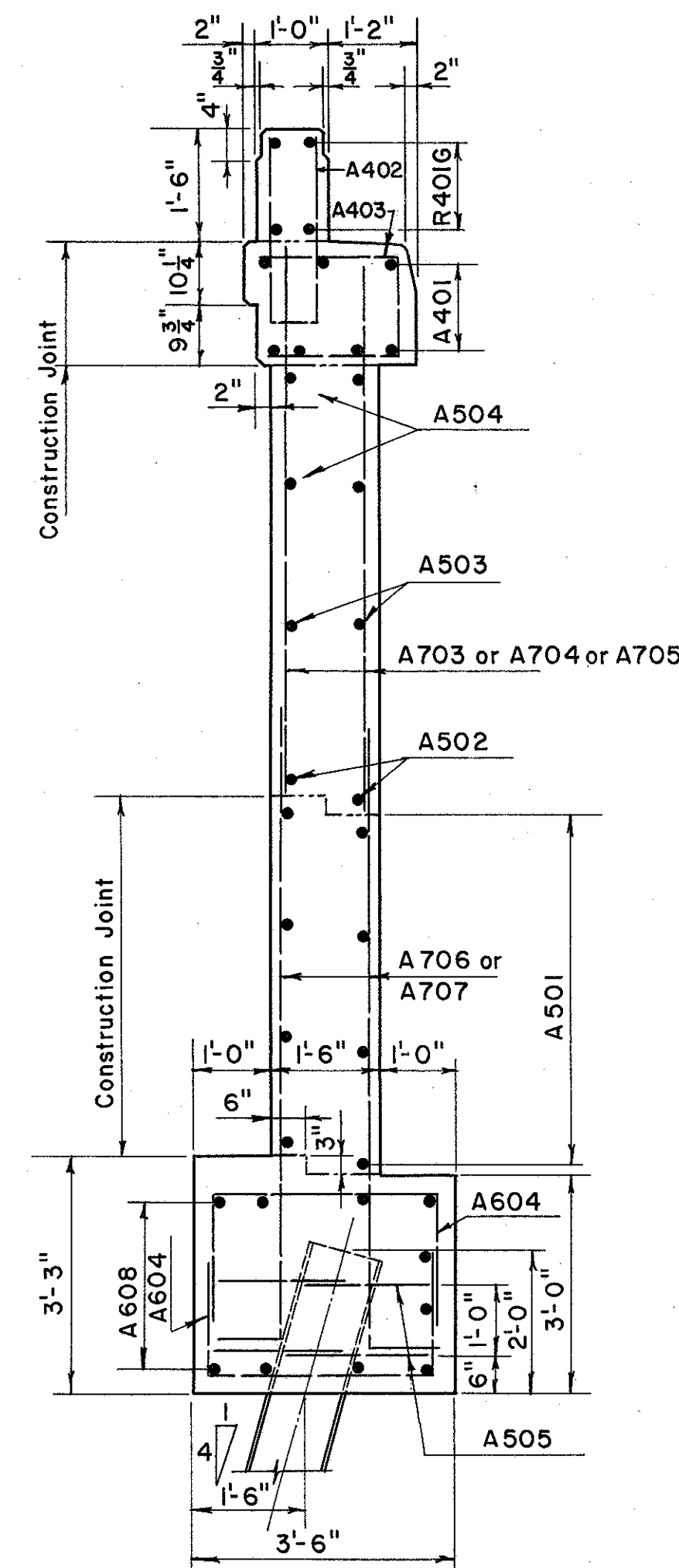
LAKE COUNTY  
SEC. LAK-2-14.22



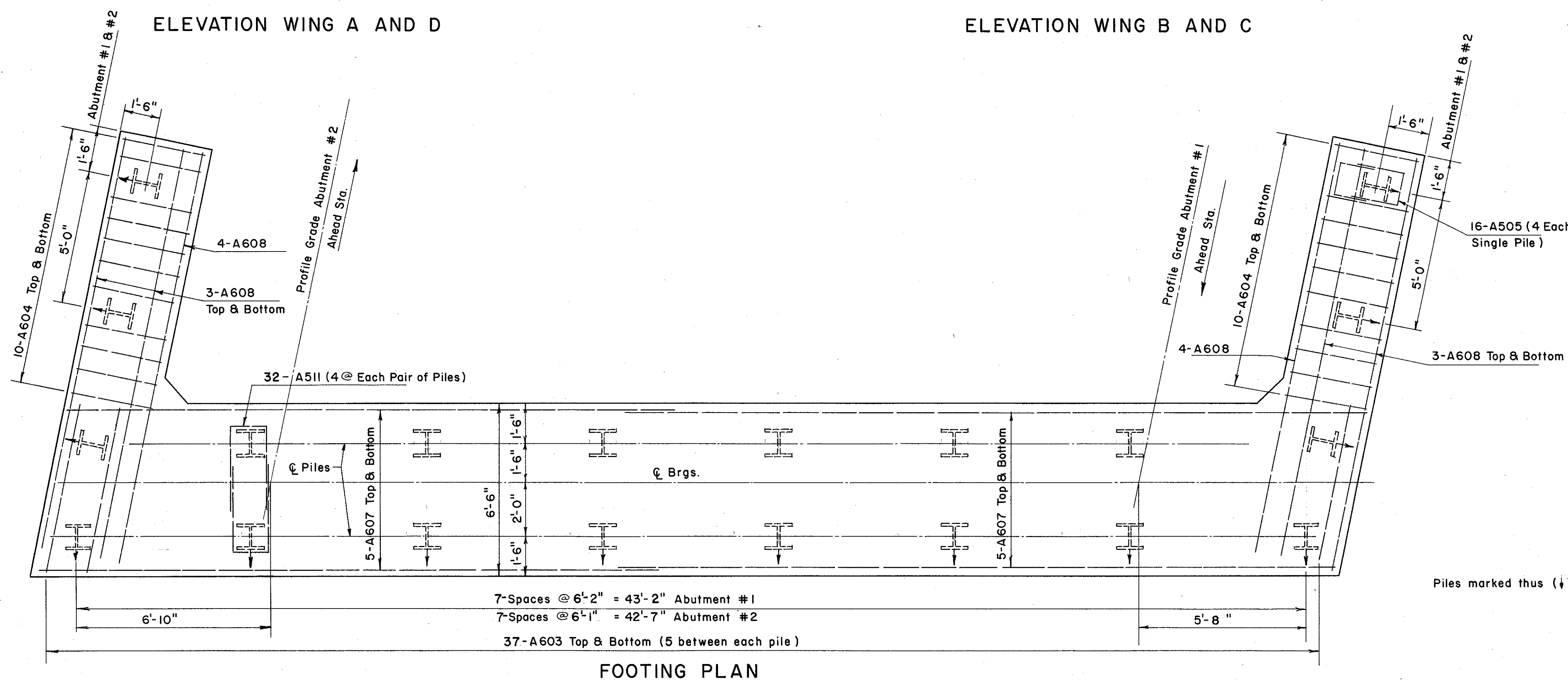
ELEVATION WING A AND D



ELEVATION WING B AND C



TYPICAL WINGWALL SECTION



FOOTING PLAN

For Notes See Drwg. Abutment #1 Left Bridge  
Railing to be continuous over wing walls.

PREPARED BY  
CAPITOL ENGINEERING ASSOCIATES, DILLSBURG, PA.  
FOR

STATE OF OHIO  
DEPARTMENT OF HIGHWAYS  
DIVISION OF DESIGN AND CONSTRUCTION  
BUREAU OF BRIDGES

ABUTMENT DETAILS RIGHT BRIDGE  
BRIDGE NO. LAK-2-1471 L & R  
RELOC. S. R. 2 OVER B.&O. RR.-S.R. 283  
LAKE COUNTY

STA. 680 + 56.97

DESIGNED	DRAWN	TRACED	CHECKED	REVIEWED	DATE	REVISED
	J.G.					