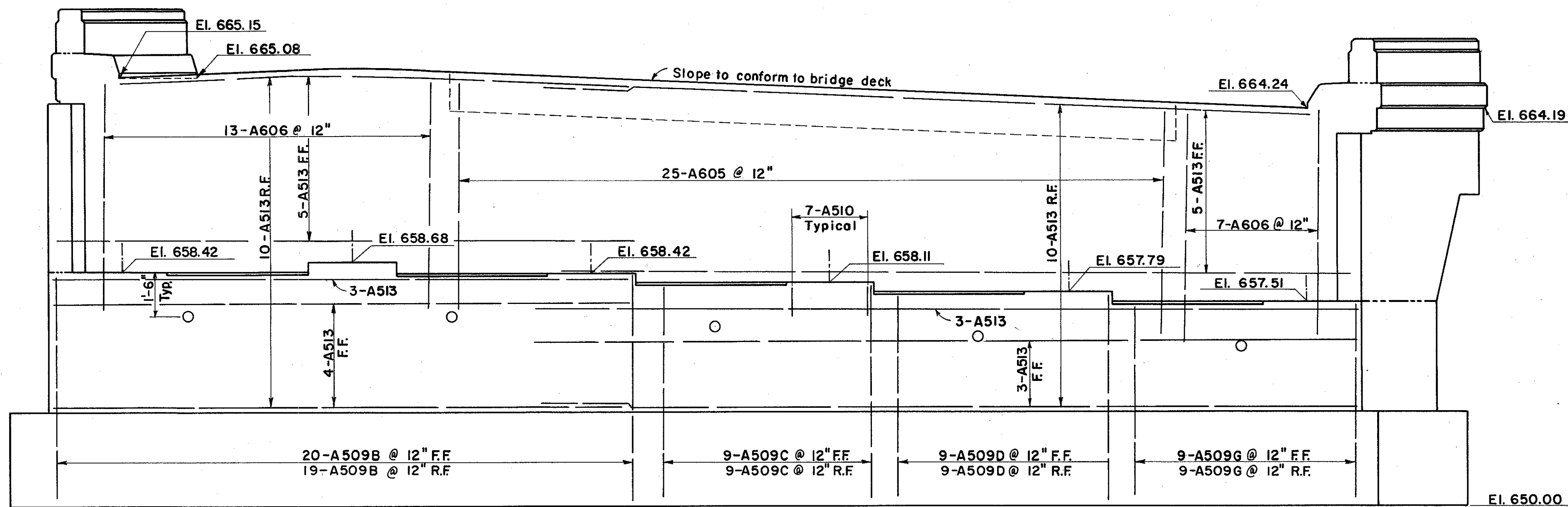
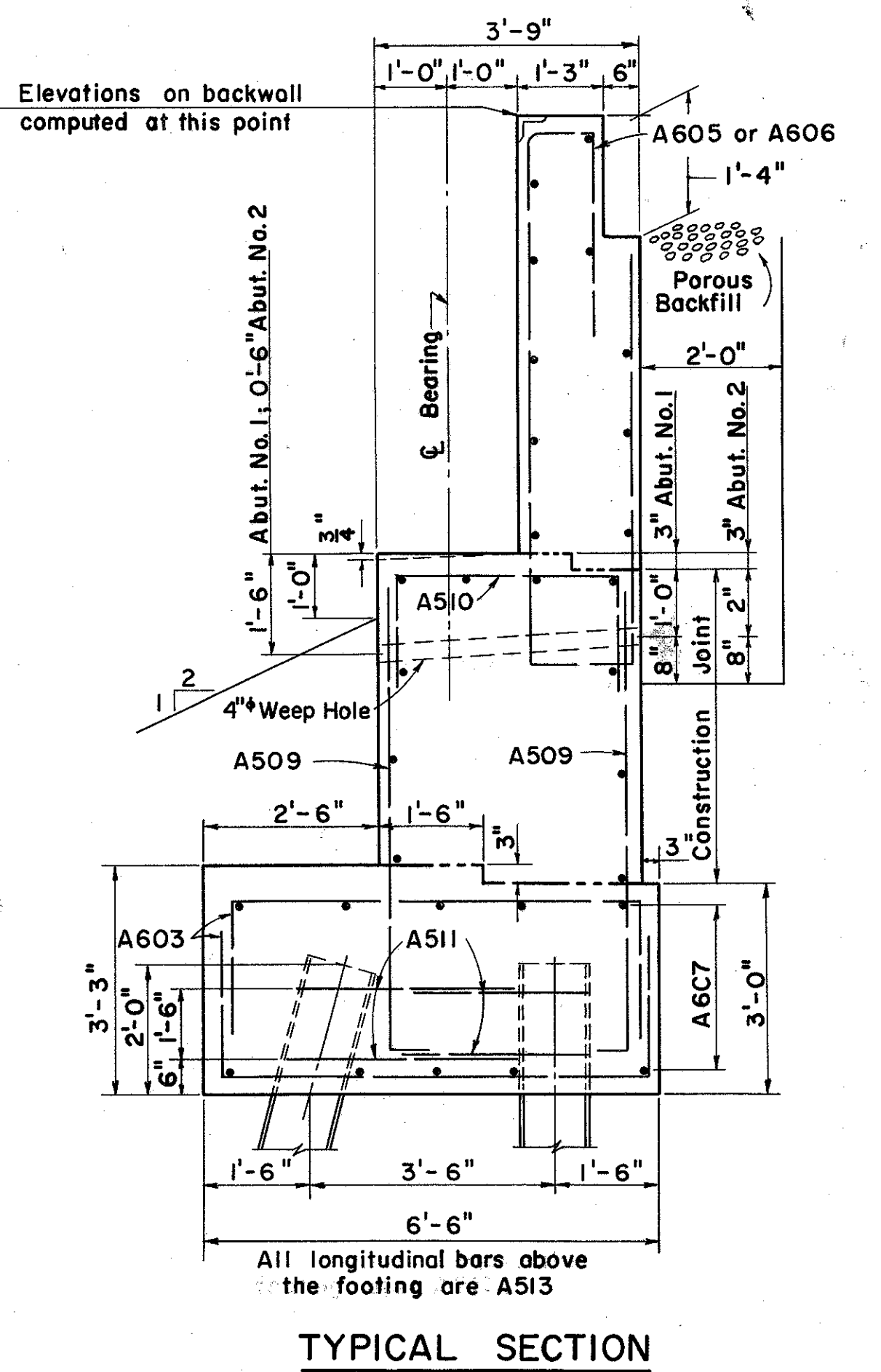
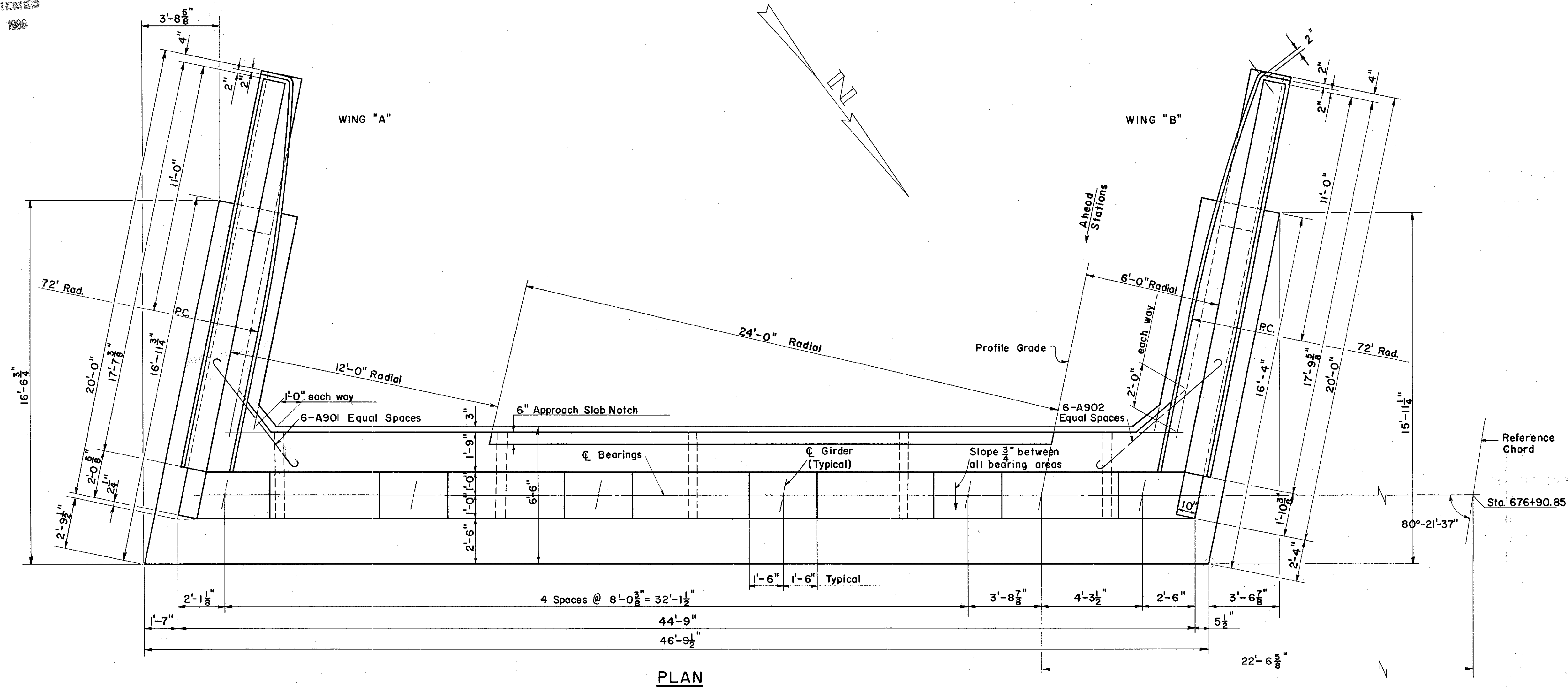


LAKE COUNTY
SEC. LAK-2+14.22



ELEVATION
(Piles not shown see Abutment details)

For Notes see drawing Abutment No. 1 Left Bridge.

PREPARED BY
CAPITOL ENGINEERING ASSOCIATES, DILLSBURG, PA.
FOR

STATE OF OHIO
DEPARTMENT OF HIGHWAYS
DIVISION OF DESIGN AND CONSTRUCTION
BUREAU OF BRIDGES

ABUTMENT #1 RIGHT BRIDGE
BRIDGE NO. LAK-2-1471 L & R.
RELOC. S. R. 2 OVER B.&O. R.R. - S.R. 283
LAKE COUNTY

STA. 680 + 56.97

DESIGNED	DRAWN	TRACED	CHECKED	REVIEWED DATE	REVISED
J. G.	J. G.	F. W. B.	DR		