

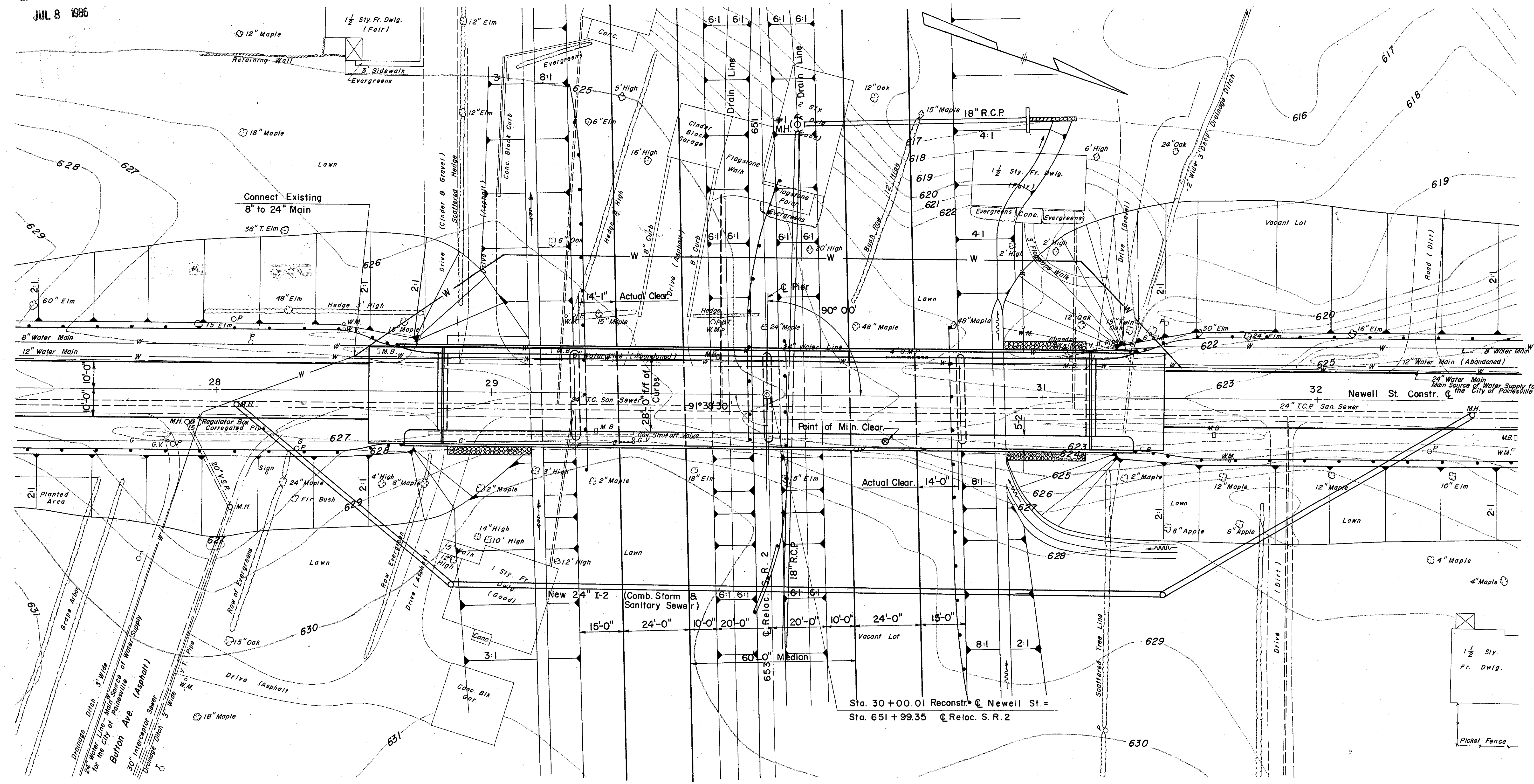
11-9

F-17

MICROFILMED
JUL 8 1966

FED. RD. DIVISION	STATE	PROJECT	291 384
2	OHIO		

LAKE COUNTY
SEC. LAK-2-1422



FOUNDATION SOUNDINGS:
Foundation design and foundation quantities are based on a study of borings and soil samplings made at the site. This boring and sounding information may be inspected in the office of the Bureau of Bridges in Columbus, or in the Division Office, but the State assumes no responsibility for the accuracy thereof.

UTILITIES:
Existing Water and Sewer Lines shall be relocated clear of structure.
Power adjustments in this plan for Painesville Electric Co., other power and telephone by others.
Gas lines relocated by others.

TYPE: Four Span Continuous Steel Beam with Concrete Deck and Substructure.

SPANS: 49'-0", 70'-0", 70'-0", 49'-0"

ROADWAY: 28'-0" f/f of 2'-2" Safety Curb left side and 5'-2" Sidewalk right side.

LOAD FREQUENCY: CF = 400

SKEW: 0°00'

WEARING SURFACE: 1" Monolithic Concrete

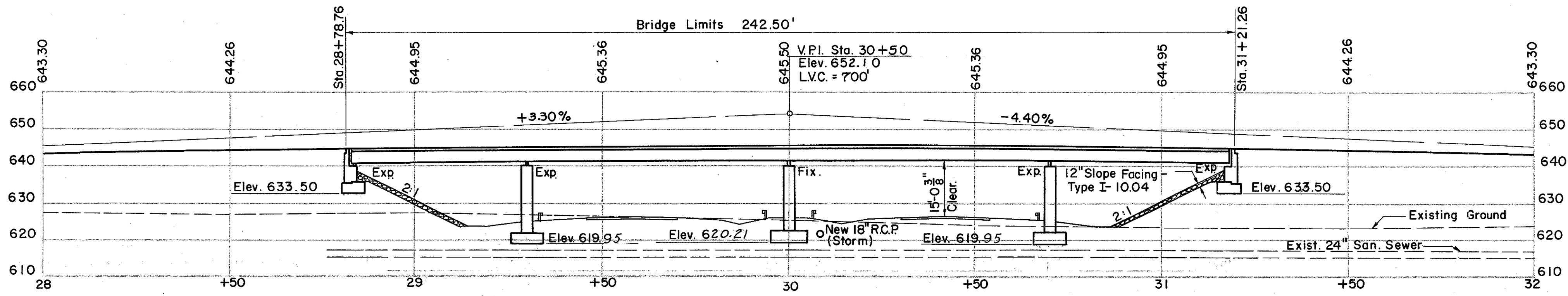
APPROACH SLABS: Special (25'-0" long)

ALIGNMENT: Tangent

ADT: 4170 (1975)

B.M. #62 Lag Bolt in Root of 36" T. Elm,
175' Right of Sta. 651+35
Elev. 626.674

All footings designed for 2 tons per square foot.



PREPARED BY
CAPITOL ENGINEERING ASSOCIATES, DILLSBURG, PA.
FOR
STATE OF OHIO
DEPARTMENT OF HIGHWAYS
DIVISION OF DESIGN AND CONSTRUCTION
BUREAU OF BRIDGES

SITE PLAN
BRIDGE NO. LAK-2-1424
RELOC. S. R. 2 UNDER NEWELL ST.
LAKE COUNTY
STA. 651+99.35

DESIGNED	DRAWN	TRACED	CHECKED	REVIEWED DATE	REVISED
		J.P.S. 1-6-60			

W 9/16/60