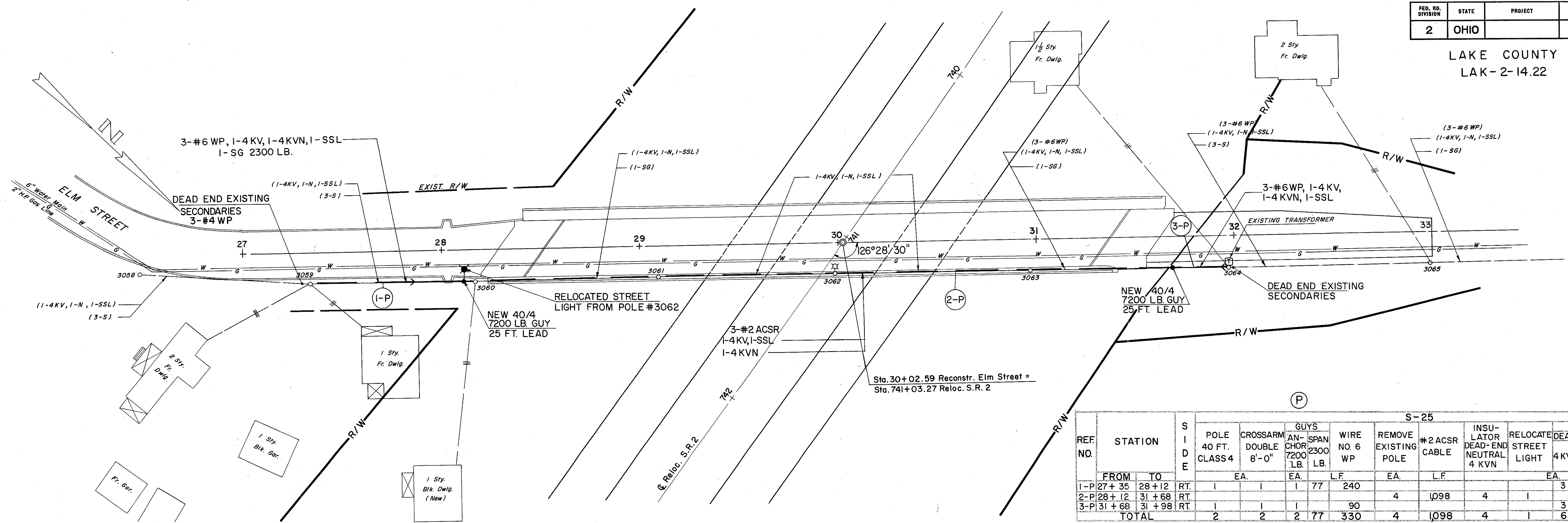
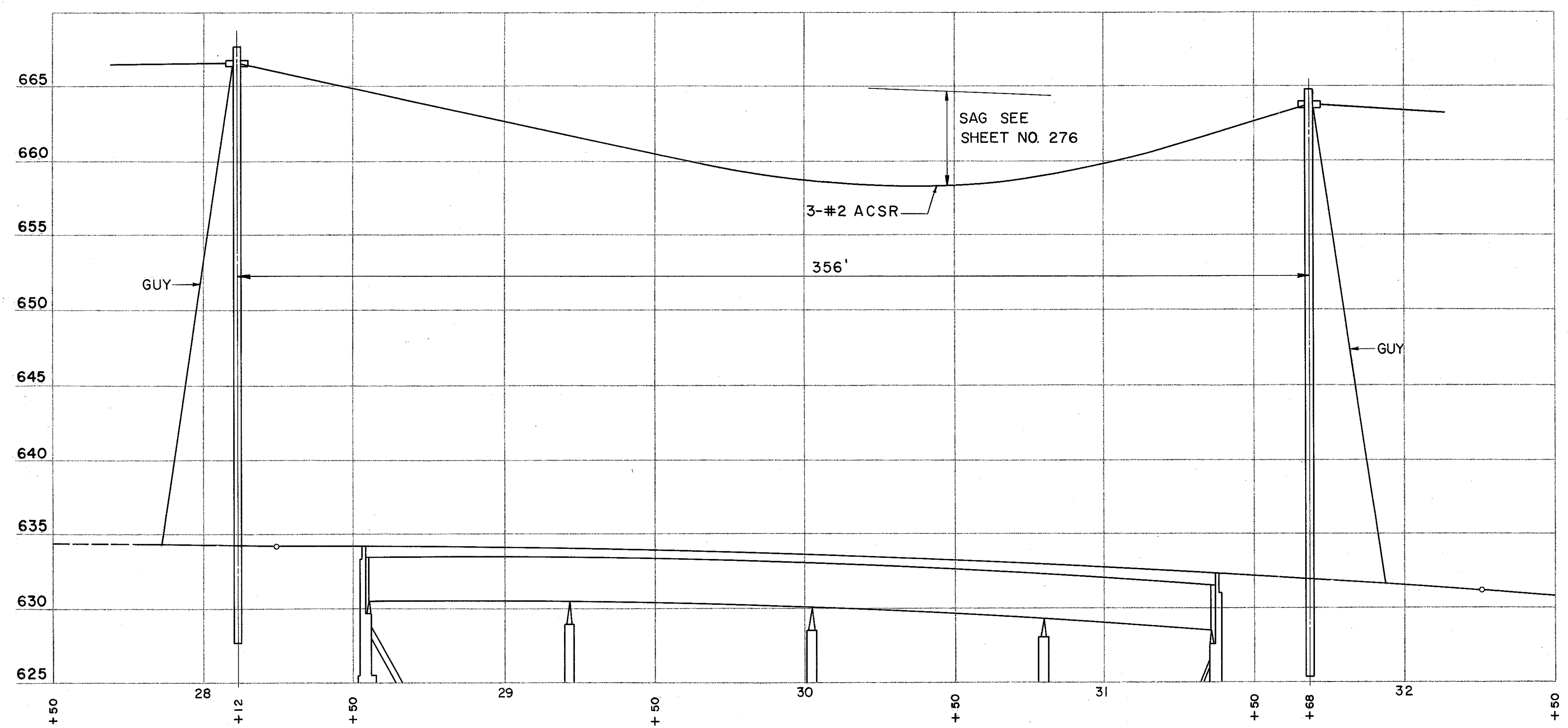


LAKE COUNTY  
LAK-2-14.22



S-25

REF. NO.	STATION		SIDE	POLE CLASS 4	CROSSARM DOUBLE 8'-0"	GUYS AN-CHOR 2300 LB.	SPAN 77	WIRE NO. 6 WP	REMOVE EXISTING POLE	#2 ACSR CABLE	INSULATOR DEAD-END NEUTRAL 4 KVN	RELOCATE STREET LIGHT			DEAD-END INSULATORS		
	FROM	TO										EA.	LF	EA.	LF	EA.	LF
1-P	27+35	28+12	RT.	1	1	1	77	240							3		2
2-P	28+12	31+68	RT.					90	4	1098	4	1				4	
3-P	31+68	31+98	RT.	1	1	1									3		2
TOTAL				2	2	2	77	330	4	1098	4	1			6	4	4



FOR POLE & OTHER DETAILS  
SEE SHEETS NO. 275 & 276

FOR OTHER CONSTRUCTION DETAILS  
SEE SHEETS NO. 238 & 239

POWER ADJUSTMENTS  
ELM STREET