

FOR OTHER CONSTRUCTION DETAILS
SEE SHEET NO. 147

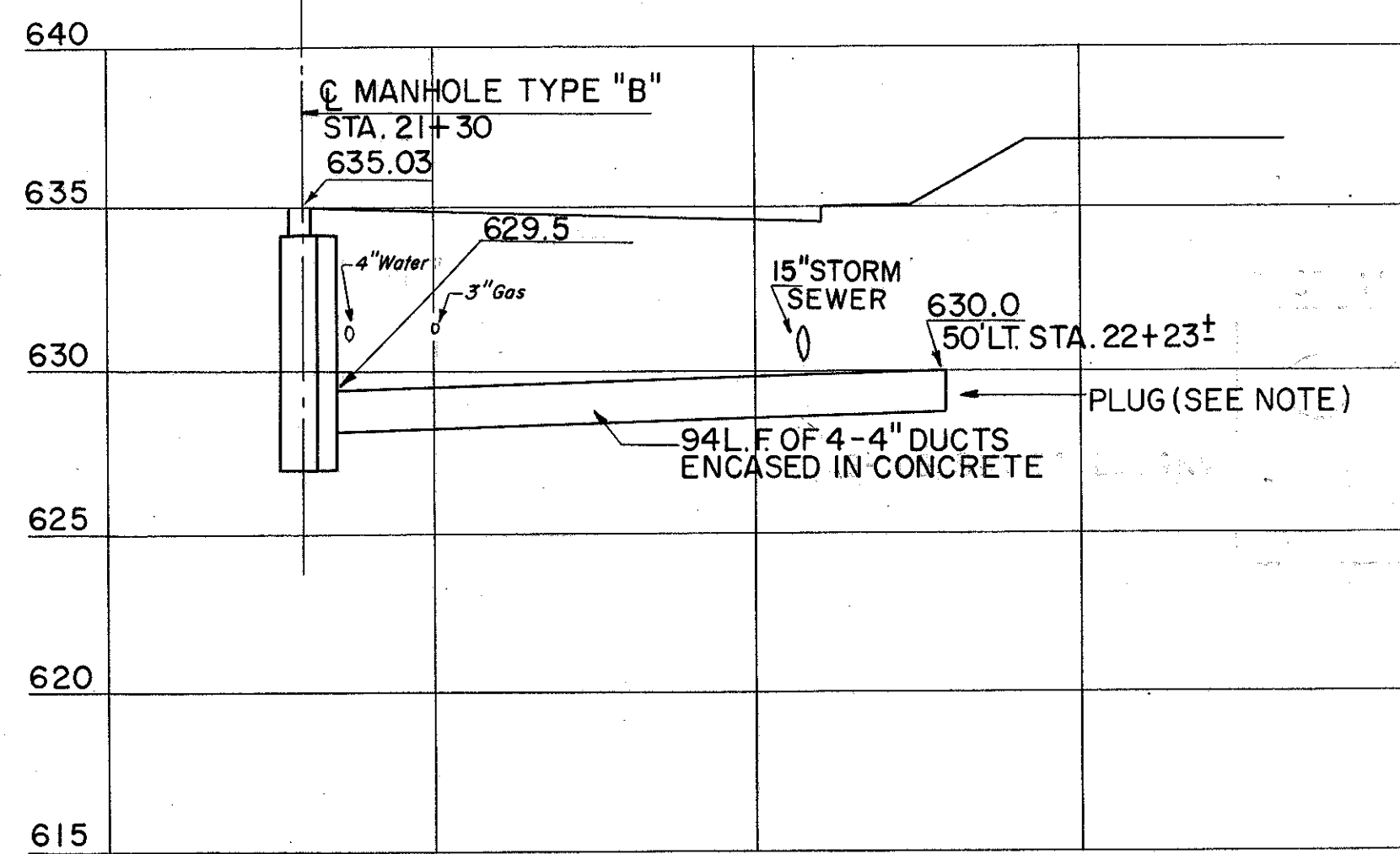
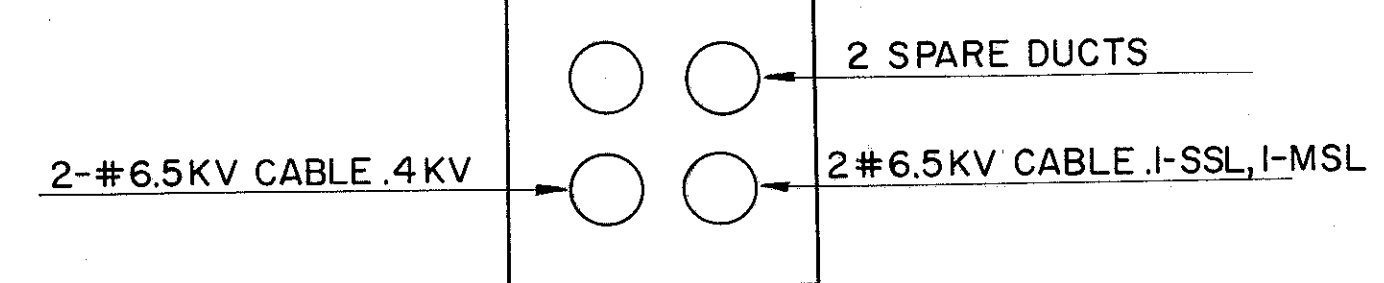
FOR POLE & DUCT DETAILS
SEE SHEETS NO. 275-276

POWER ON EAST SIDE OF RICHMOND STREET
& ALL TELEPHONE LINES TO BE REMOVED BY
OTHERS

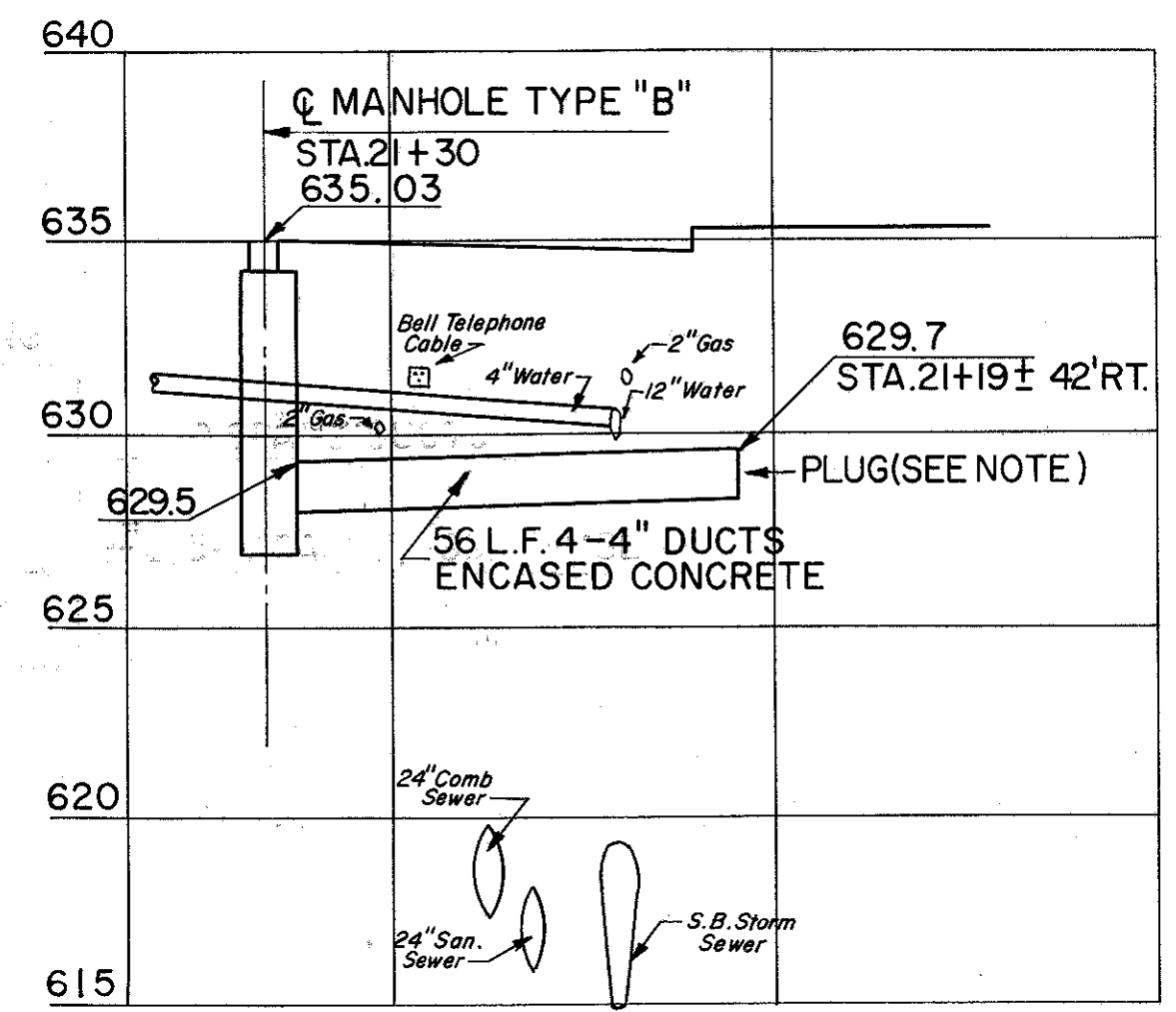
FOR QUANTITIES SEE SHEET NO. 284

INTERCHANGE CIRCUITS A-1.8 A-2 TO BE
CONNECTED INTO THE PULL BOX 52 FT.
RIGHT OF STATION 28+52. FOR INTERCHANGE
LIGHTING SEE SHEET NO. 273

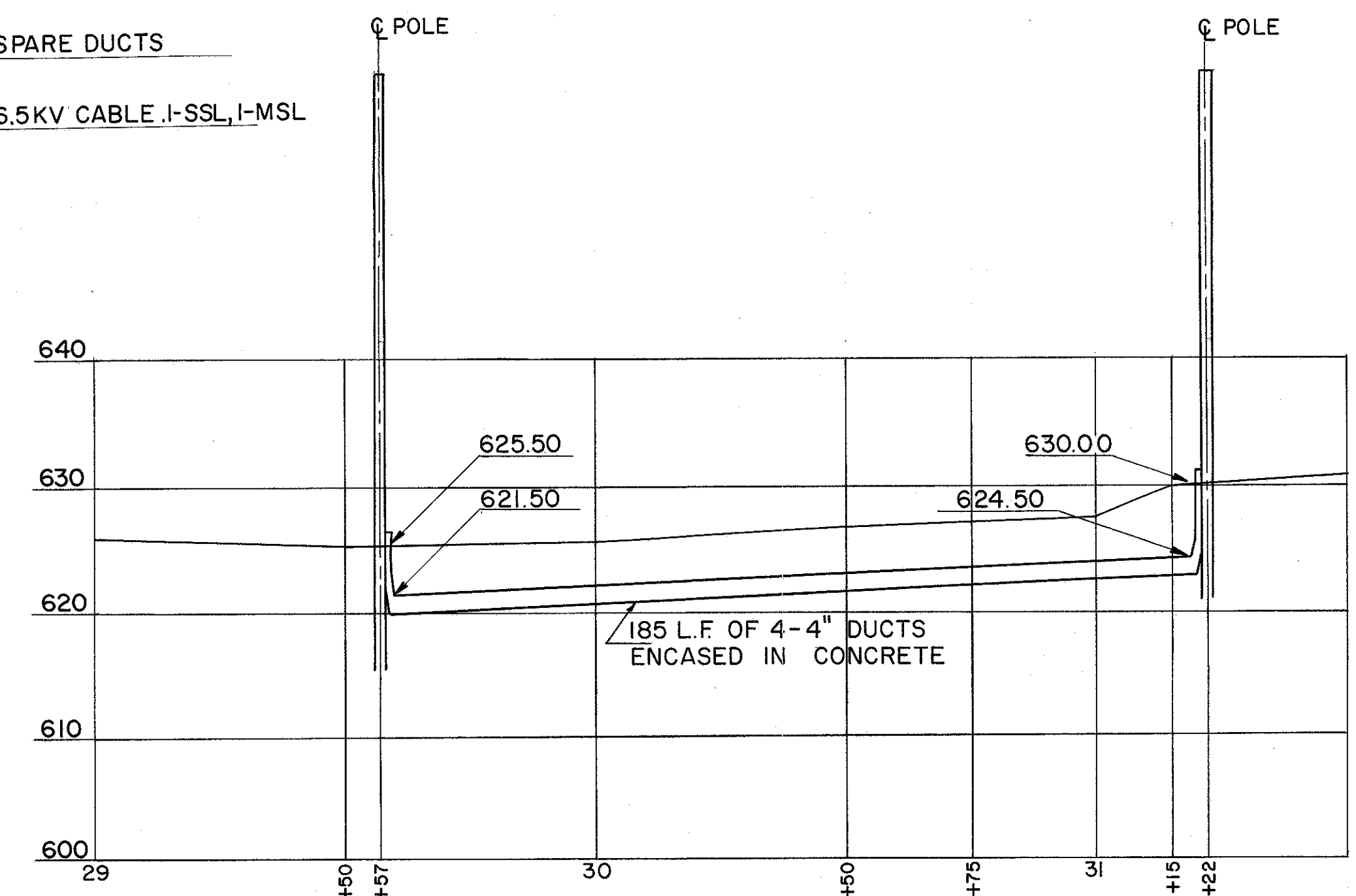
DUCT WIRING



PROFILE ALONG C OF NEW DUCT-RICHMOND STREET
LT. STA. 21+30 TO STA. 22+22



PROFILE ALONG C OF NEW DUCT-RICHMOND STREET
LT. STA. 21+30 TO RT. STA. 21+19



PROFILE ALONG C OF NEW DUCT

POWER ADJUSTMENTS
RICHMOND STREET