

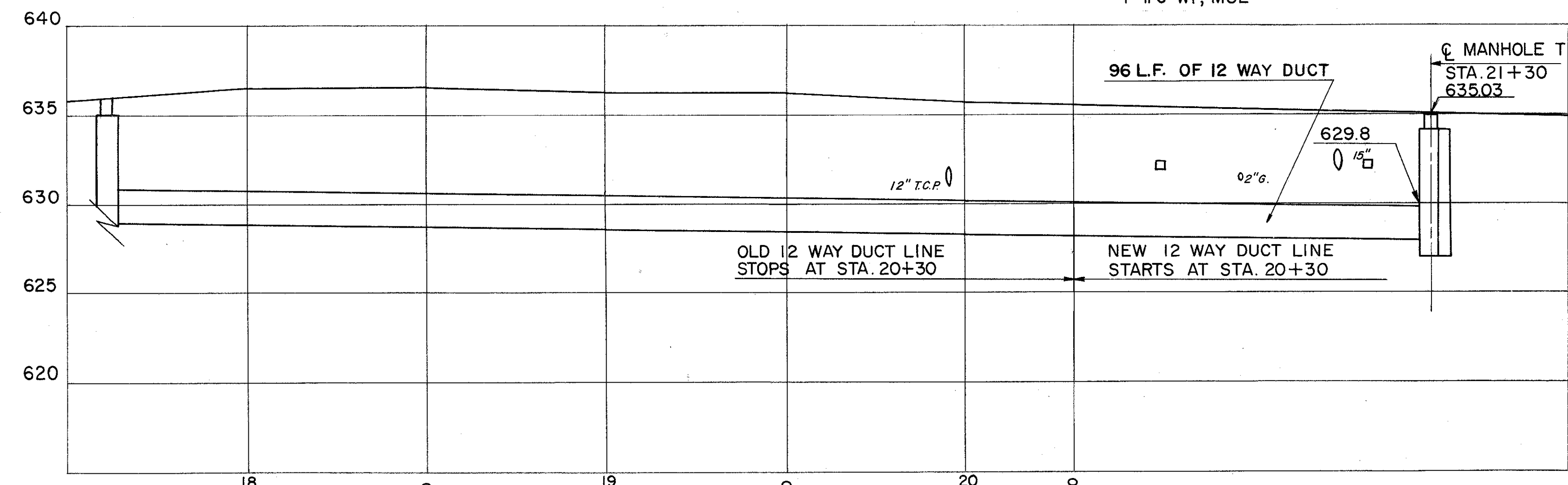
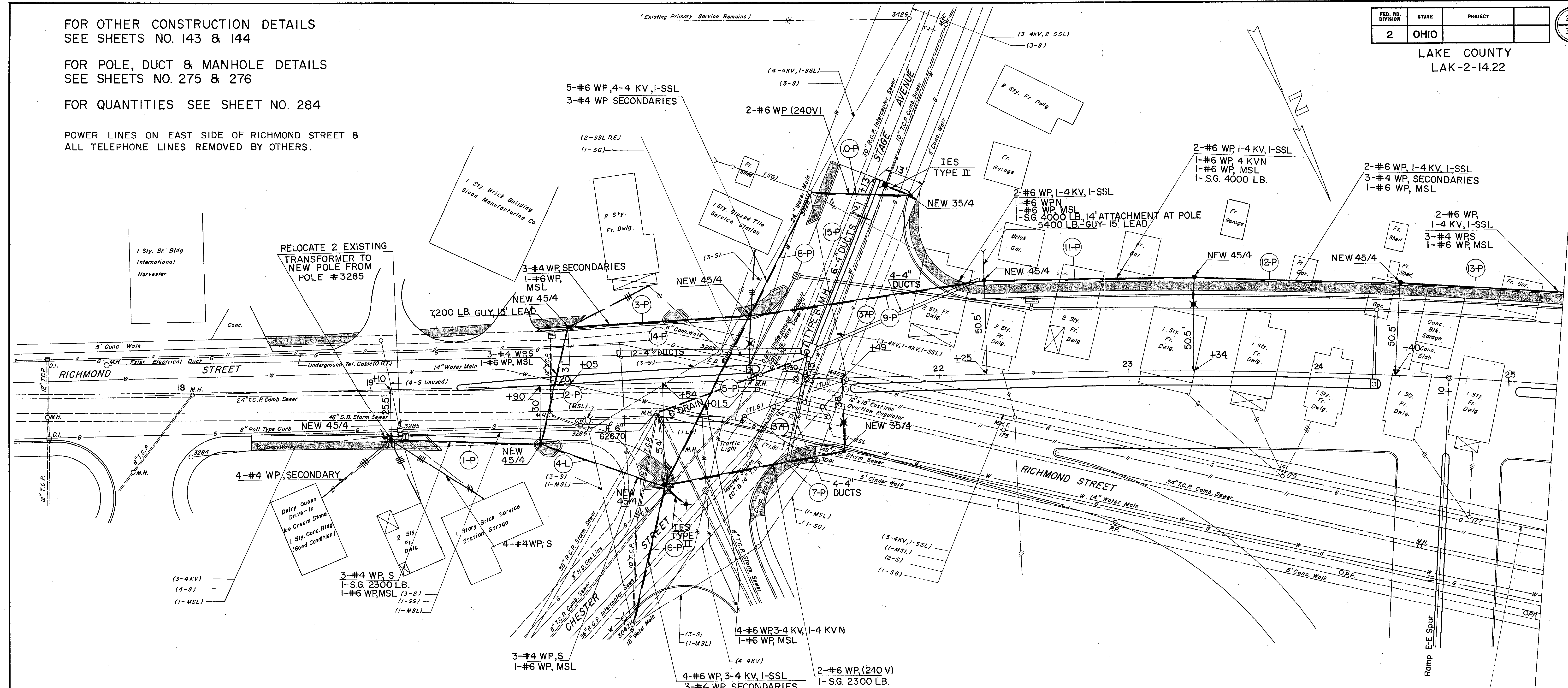
LAKE COUNTY  
LAK-2-14.22

FOR OTHER CONSTRUCTION DETAILS  
SEE SHEETS NO. 143 & 144

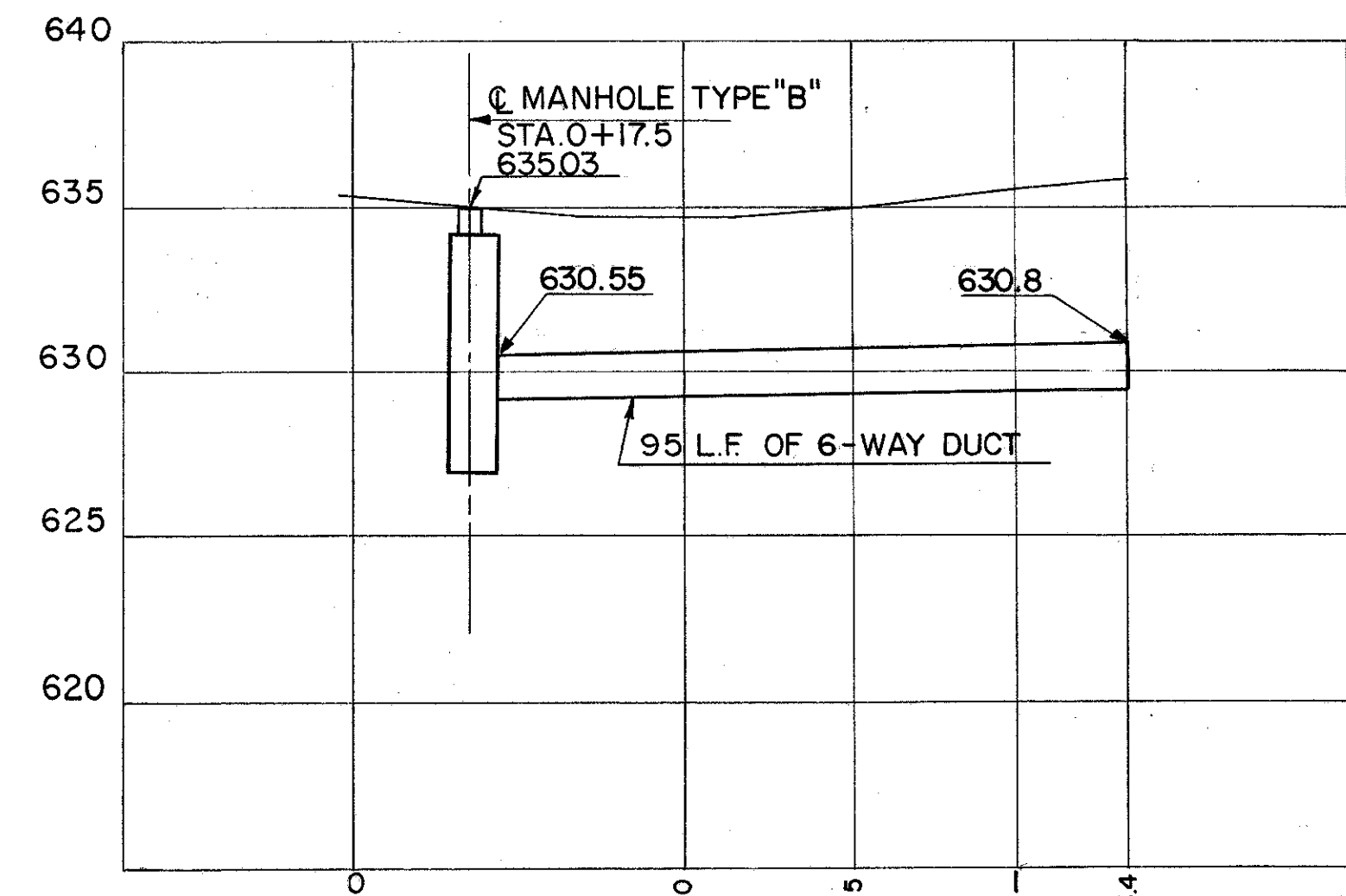
FOR POLE, DUCT & MANHOLE DETAILS  
SEE SHEETS NO. 275 & 276

FOR QUANTITIES SEE SHEET NO. 284

POWER LINES ON EAST SIDE OF RICHMOND STREET &  
ALL TELEPHONE LINES REMOVED BY OTHERS.



PROFILE ALONG C OF NEW DUCT- RICHMOND STREET



PROFILE ALONG C OF NEW DUCT- STAGE AVENUE

POWER ADJUSTMENTS  
RELOC. RICHMOND STREET