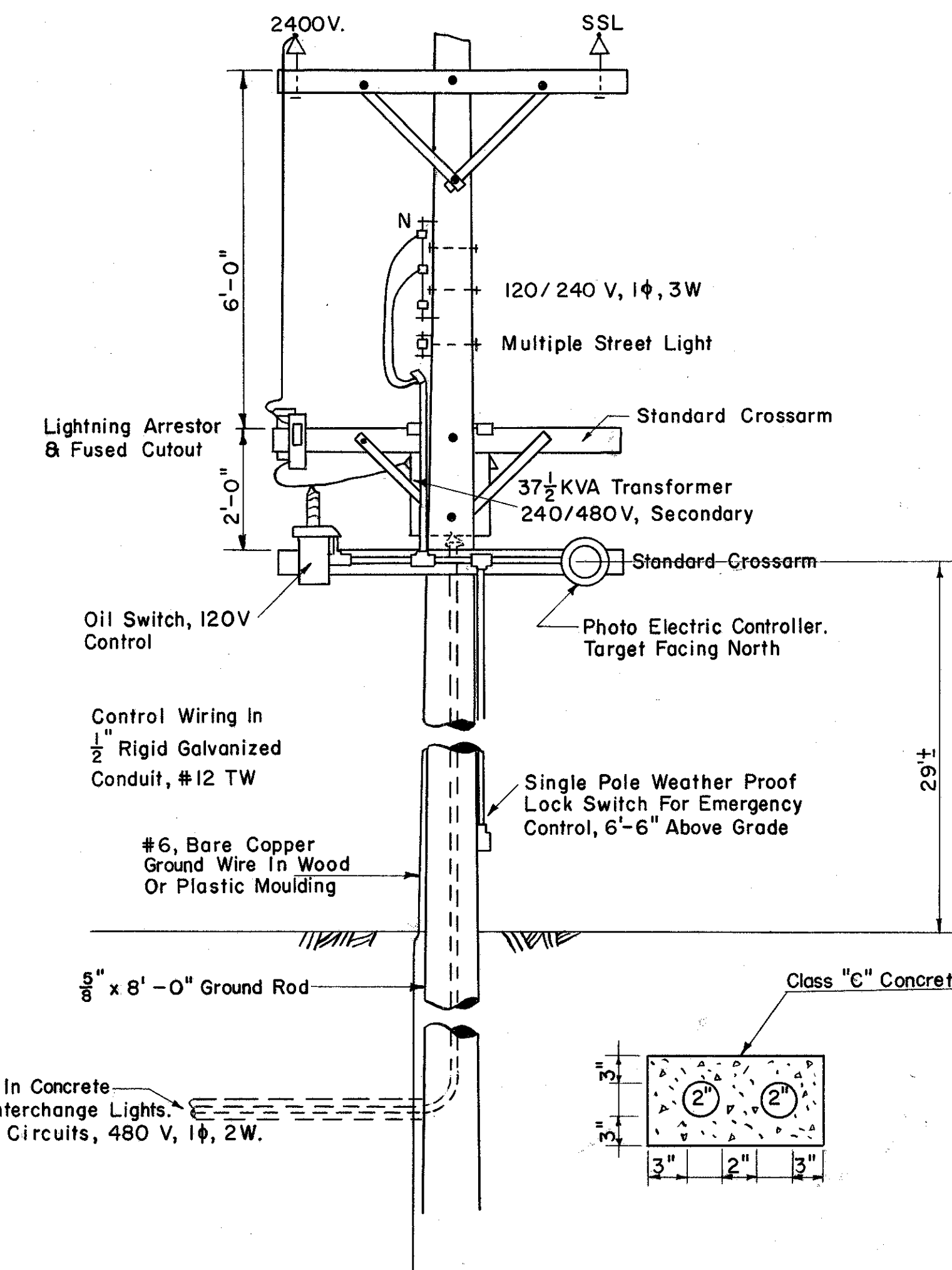
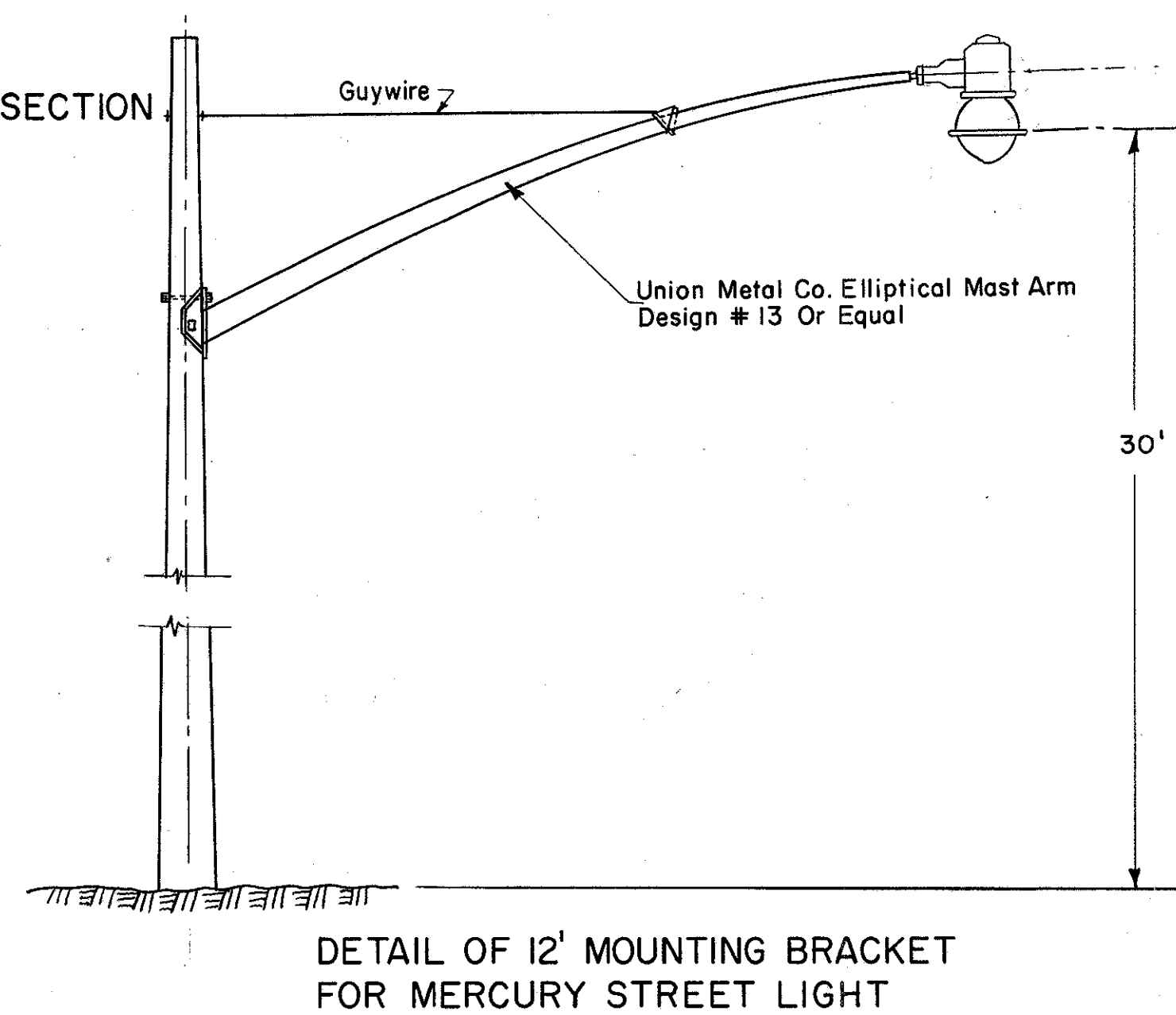


STREET LAMP FEED DETAIL SERIES CIRCUIT

6" Drain, located as shown is to be constructed as per Ohio State Standard Specifications for I-2 Pipe, & shall be Similar to M-6.5 (b) or M-6.8 (b) Pipe. Payment for Drain & Connection To Manhole in 42" x 57" S.B. Storm Sewer to be included in Unit Price bid for Type "B" Manhole.

STAGE AVE & RICHMOND INTERSECTION
SEE SHEET NO 281



2-2" Rigid Aluminum Conduits In Concrete Under Richmond Street To Interchange Lights.
2-#4 RHW-USE Each Conduit, 2 Circuits, 480 V, 1φ, 2W.

SERVICE EQUIPMENT FOR MERCURY LIGHTING RICHMOND STREET AND INTERCHANGE