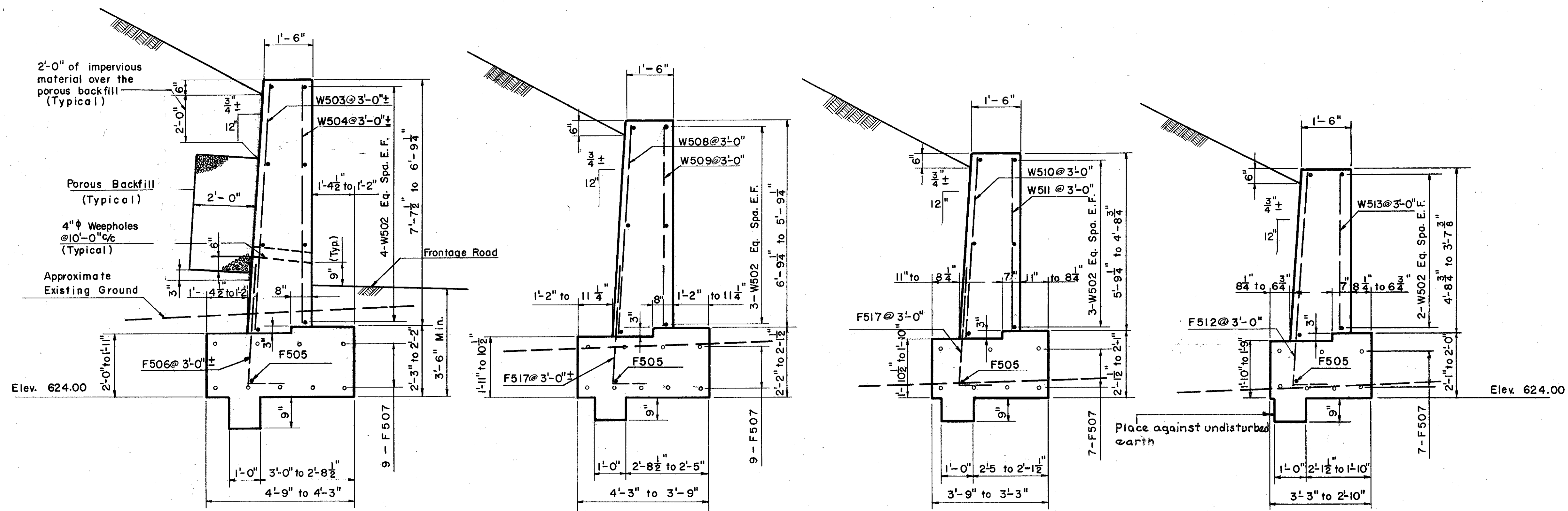


LAKE COUNTY  
SEC. LAK - 2-14.22



TYPICAL SECTION UNIT 2

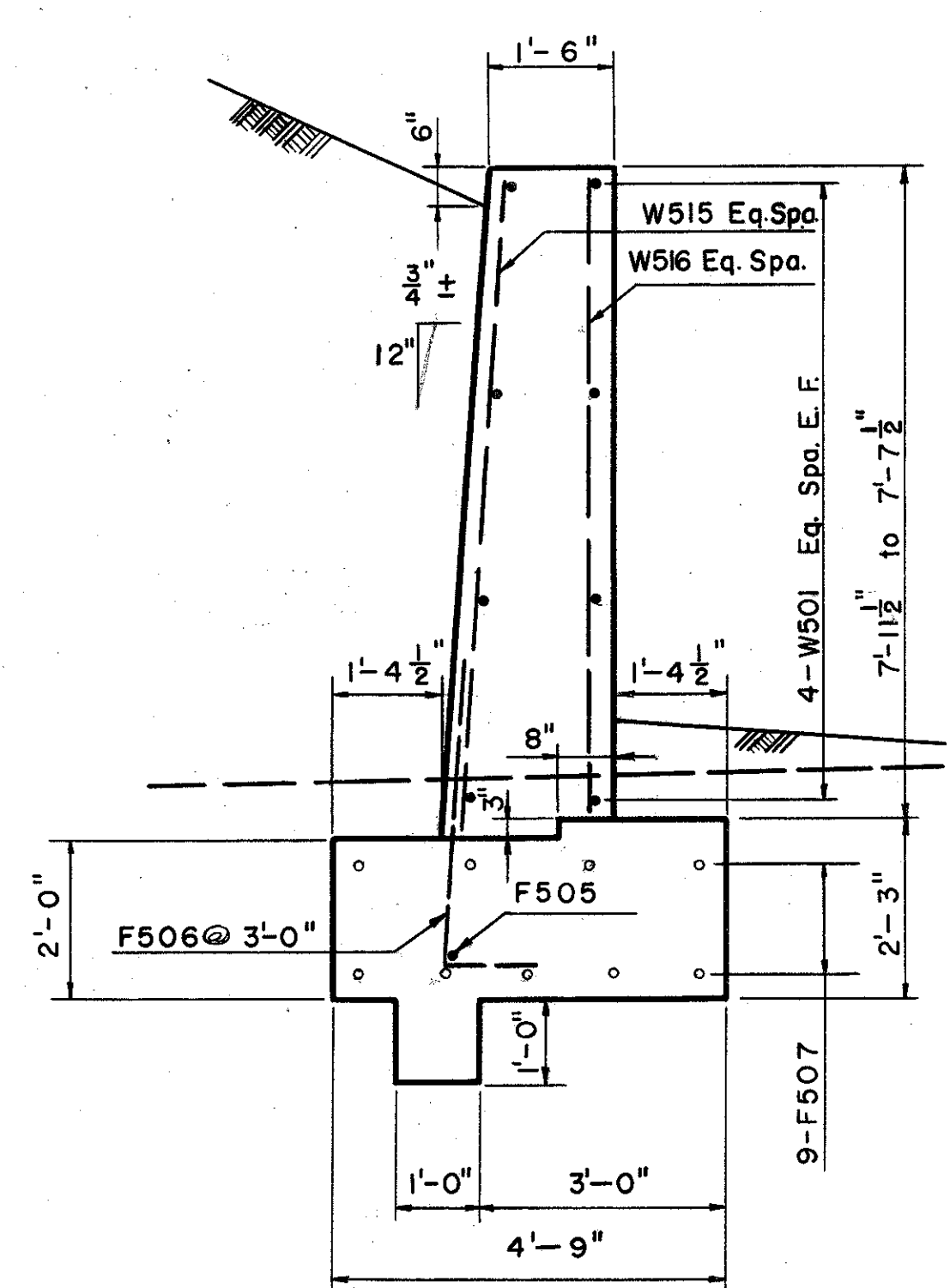
TYPICAL SECTION UNIT 3

TYPICAL SECTION UNIT 4

TYPICAL SECTION UNIT 5

REINFORCING STEEL LIST						
MARK NO.	SIZE	TYPE	LENGTH	WEIGHT	INCR.	BEND DIAGRAMS
W501	8	5 Str.	10'-6"	87		
W502	24	5 Str.	29'-6"	740		
W503	11	5 Str.	7'-9" to 10'	82	by 1"	
W504	11	5 Str.	7'-4" to 10'	79	by 1"	
F505	5	5 Str.	27'-6"	143		
F506	1	6 Bent	4'-11"	82		
F507	3	2 Str.	10'-0"	333		
W508	11	5 Str.	6'-9 1/4" to 10'	73	by 1 1/8"	
W509	11	5 Str.	6'-6 1/4" to 10'	70	by 1 1/8"	
W510	11	5 Str.	8'-8 1/2" to 10'	60	by 1 1/4"	
W511	11	5 Str.	10'-4 1/2" to 10'	58	by 1 1/4"	
F512	1	1 Bent	7'-5 1/2" to 10'	79	by 1 1/4"	
W513	11	5 Str.	3'-3 1/2" to 10'	45	by 1 1/4"	
W515	5	5 Str.	7'-8" to 10'	39	by 1"	
W516	5	5 Str.	7'-11" to 10'	40	by 1"	
F517	22	5 Bent	4'-10"	111		

TOTAL 2121#



TYPICAL SECTION UNIT 1

NOTE:  
Reinforcing steel shall have a minimum of 2" cover everywhere, except in the footings, where it shall be 3" minimum.

PREPARED BY  
CAPITOL ENGINEERING ASSOCIATES, DILLSBURG, PA.  
FOR  
STATE OF OHIO  
DEPARTMENT OF HIGHWAYS  
DIVISION OF DESIGN AND CONSTRUCTION  
BUREAU OF BRIDGES

RETAINING WALL  
EAST WALL - NEWELL STREET  
LAKE COUNTY  
STA. 2 + 50 TO 3 + 81

DESIGNED	DRAWN	TRACED	CHECKED	REVIEWED DATE	REVISED
hkd	RE		hkd		