

LAKE COUNTY
LAK-2-14.22

REINFORCING STEEL LIST

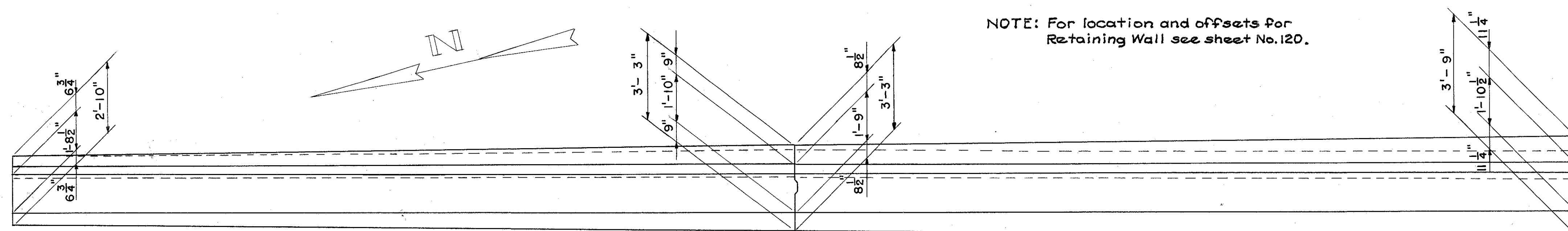
MARK	NO.	LENGTH	WEIGHT	SIZE	INCR. BEND DIAGRAM	
W501	8	32'-6"	270	5		
W502	10	29'-6"	307	5		
F503	16	10'-0"	167	5		
F504	11	Bent	74	5		
W505	11	3'-0" to 4'-3"	41	5		by 1/2"
W506	11	4'-8" to 5'-11"	60	5		by 1/2"
W507	11	4'-11" to 6'-2"	63	5		by 1/2"
F508	23	Bent	118	5		
W509	12	5'-9" to 7'-3"	81	5		by 1/2"
F510	1	32'-0"	33	5		
W511	12	6'-0" to 7'-6"	85	5		by 1/2"
W512	2	32'-4"	65	5		
TOTAL			1364 #			

*** ESTIMATED QUANTITIES**

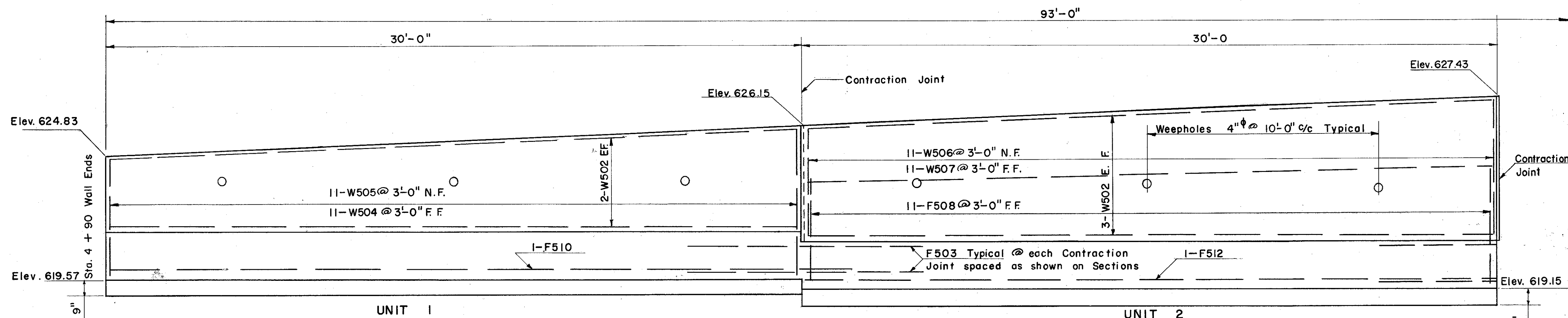
ITEM	UNIT	TOTAL	DESCRIPTION
E-2	Cu.Yds.	48	Excavation (Unclassified)
S-1	Cu.Yds.	61	Concrete (Class E)
S-3	Lin.Ft.	11	Premoulded Sealing Strip, Waterproofing
S-4	Lbs.	1364	Reinforcing Steel
S-29	Cu.Yds.	8	Porous Backfill
* Quantities carried to sheet No. 120.			

GENERAL NOTES
DESIGN SPECIFICATIONS: Design Specifications for Highway Structures of the State of Ohio, Department of Highways dated September 1, 1957 together with current revisions thereof.
Maximum Design Foundation Pressure 1.1 Tons/Sq. Ft.

NOTE: For location and offsets for Retaining Wall see sheet No. 120.

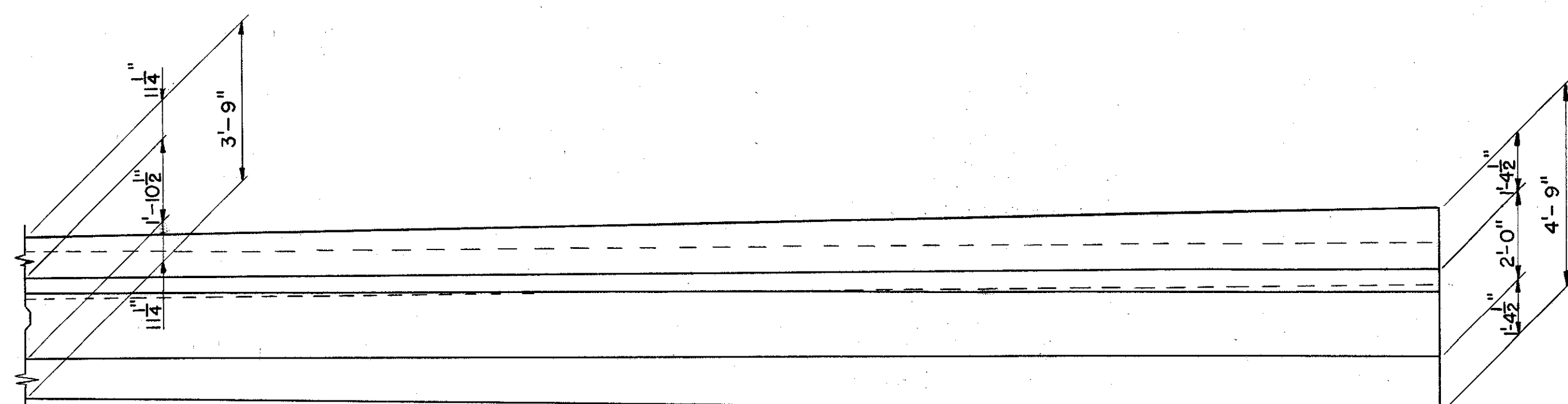


PLAN OF RETAINING WALL

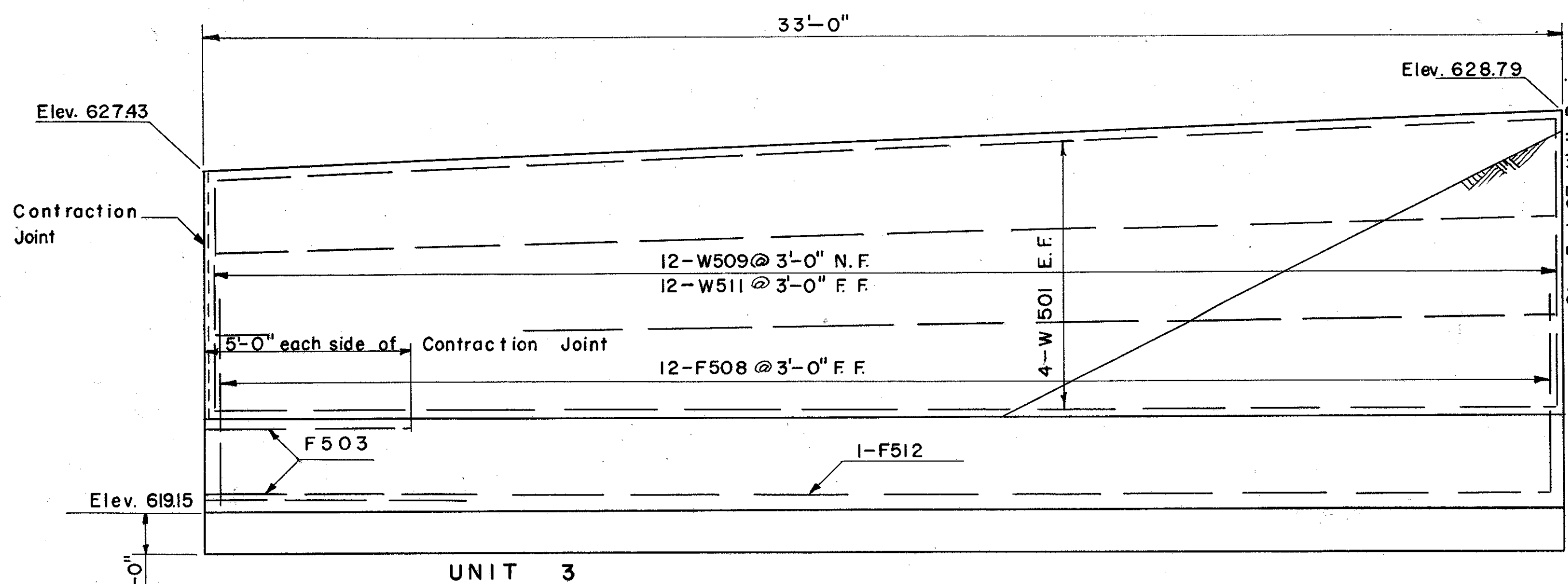


ELEVATION OF RETAINING WALL

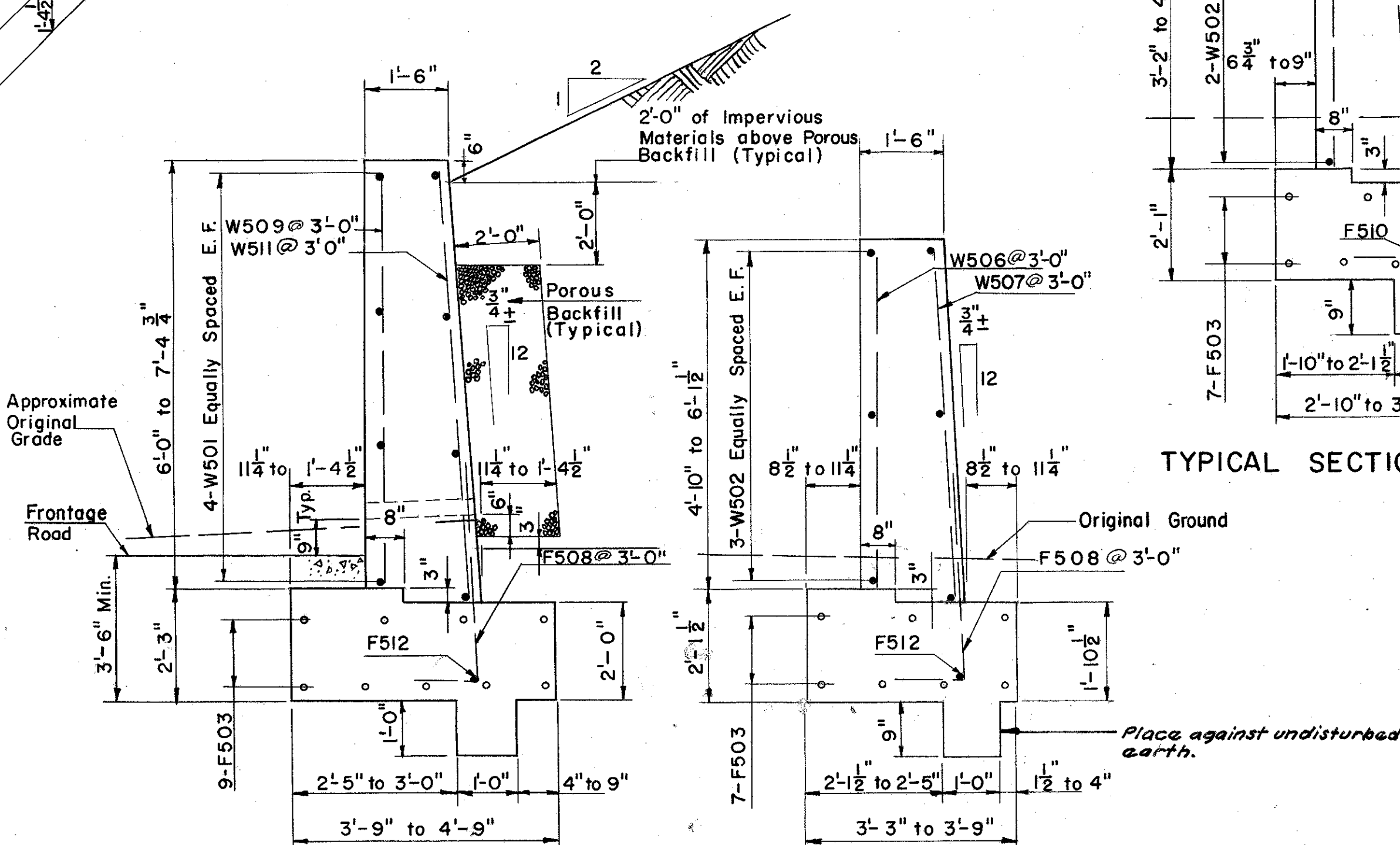
FOR FRONTAGE ROAD-WEST DETAILS SEE SHEET NO. 120



PLAN OF RETAINING WALL

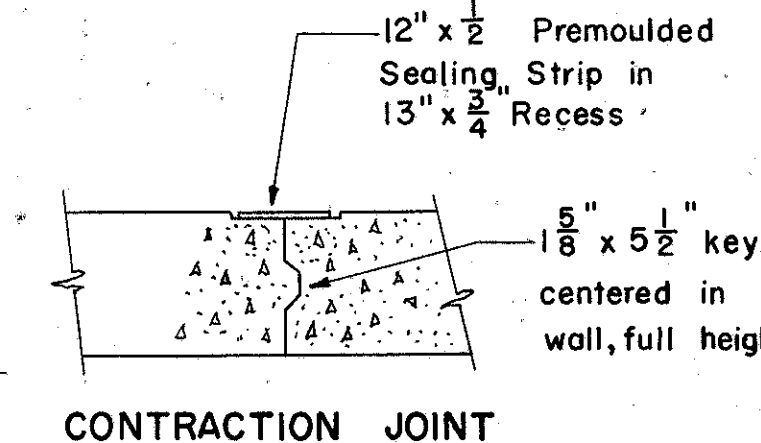


ELEVATION OF RETAINING WALL



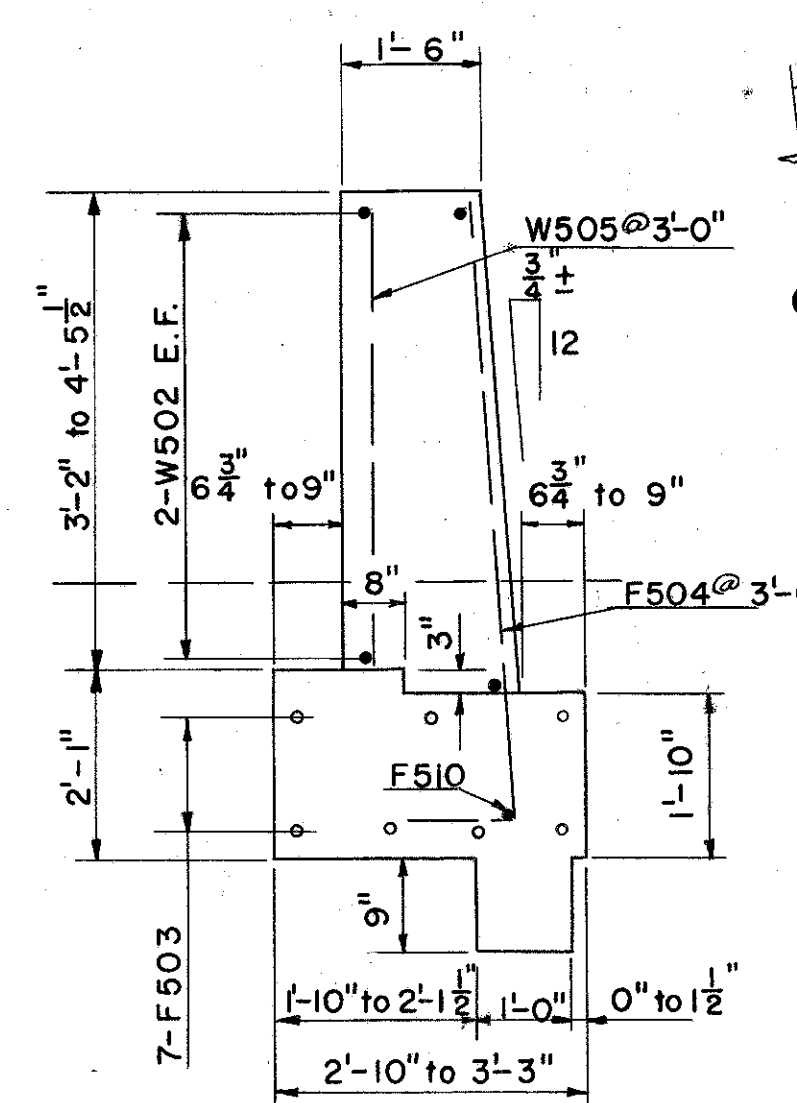
TYPICAL SECTION UNIT 3

TYPICAL SECTION UNIT 2



CONTRACTION JOINT

NOTE: Reinforcing Steel shall have 2" of cover everywhere, except in the footings, where it shall be 3".



TYPICAL SECTION UNIT 1

PREPARED BY
CAPITOL ENGINEERING ASSOCIATES, DILLSBURG, PA
FOR
STATE OF OHIO
DEPARTMENT OF HIGHWAYS
DIVISION OF DESIGN AND CONSTRUCTION
BUREAU OF BRIDGES
RETAINING WALL
WEST LALLY - NEWELL STREET
LAKE COUNTY
STA. 3 + 97 to 4 + 90

DESIGNED	DRAWN	TRACED	CHECKED	REVIEWED DATE	REVISED
LD	LD		LD		