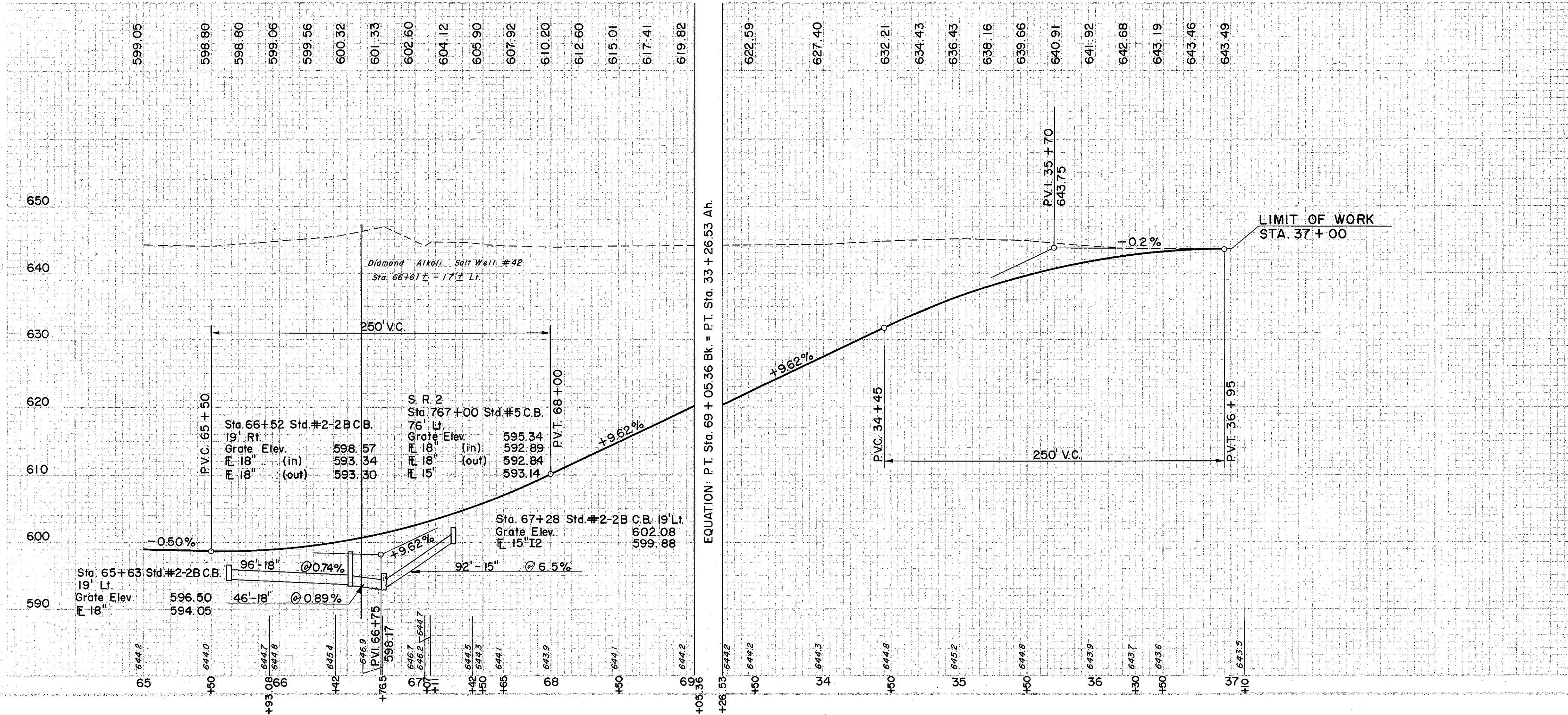
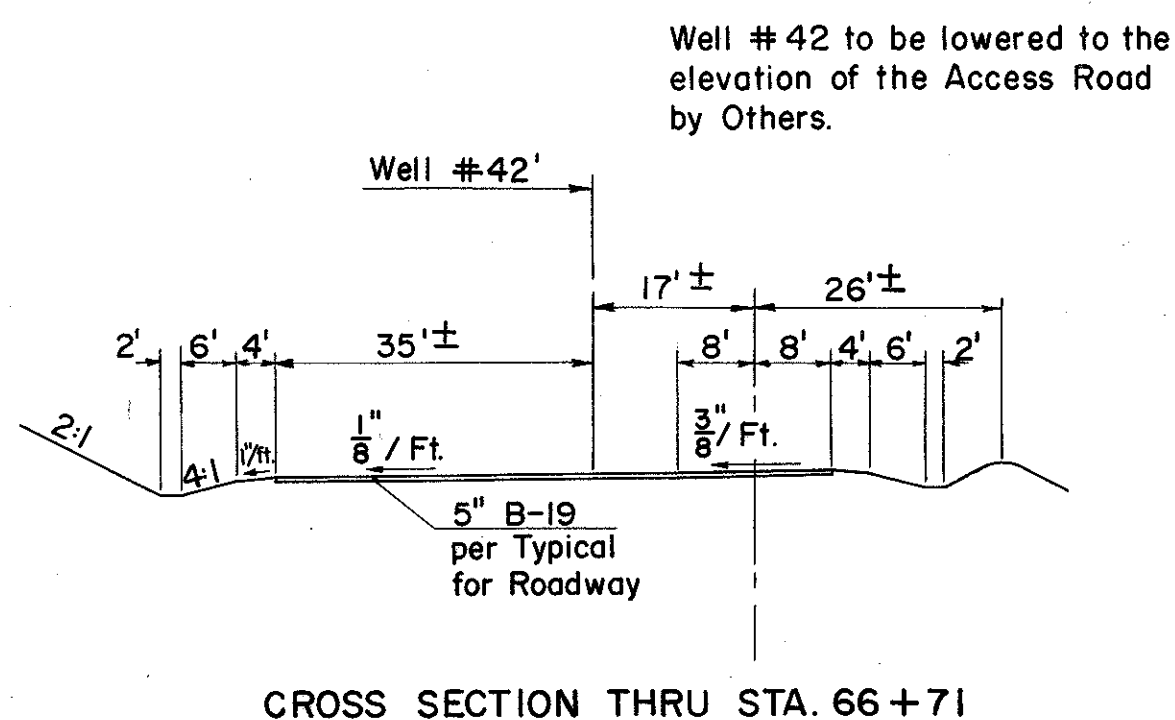
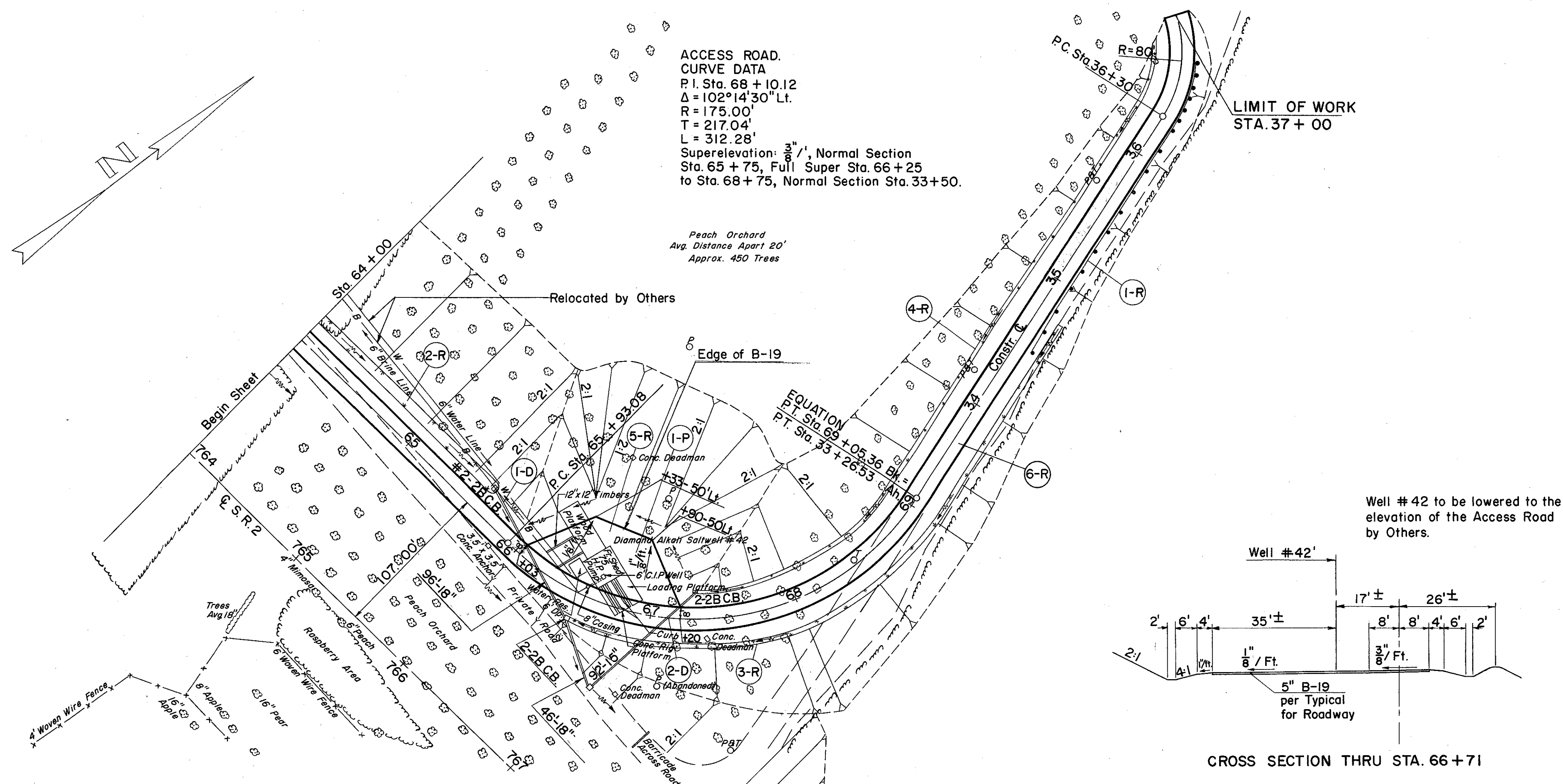


ACCESS ROAD.
CURVE DATA
P.I. Sta. 68 + 10.12
 $\Delta = 102^\circ 14' 30''$ Lt.
R = 175.00'
T = 217.04'
L = 312.28'
Superelevation: 0.033', Normal Section
Sta. 65 + 75, Full Super Sta. 66 + 25
to Sta. 68 + 75, Normal Section Sta. 33 + 50.

Peach Orchard
Avg. Distance Apart 20'
Approx. 450 Trees



D DRAINAGE

REF. NO.	STATION	SIDE	CLASS B-1 PIPE		CLASS E-1 PIPE	CLASS I-8 STD. #2-2B C.B.
			15"	18"	18"	
	FROM TO		L.F.	L.F.	L.F.	EA.
I-D	65+64 66+75	L&R	96	96	46	2
2-D	66+75 67+28	L&R	92			1
TOTAL			92	96	46	3

R ROADWAY

REF. NO.	STATION	SIDE	E-1	I-15	L-10	M-10	L-9	L-9
			COMP. SUB. GRADE	GUARD RAIL	SODDING	CALCIUM CHLORIDE	COMMERCIAL FERTILIZER	SEEDING & PROTECT.
	FROM TO		S.Y.	L.F.	S.Y.	TONS	TONS	S.Y.
I-R	34+50 36+69	Rt.		224				
2-R	64+00 65+64	Lt.			132			
3-R	66+52 34+75	Rt.			144			
4-R	67+30 36+84	Lt.			181			
5-R	66+03 67+20	Lt.	369			0.2		
6-R	64+00 37+00						1.093	12,142
TOTAL			369	224	457	0.2	1.093	12,142

P PAVEMENT

REF. NO.	STATION	SIDE	B-19
			AGGR. BASE COURSE
	FROM TO		C.Y.
I-P	66+03 67+20	Lt.	51

STATION	WIDTH OF SODDING FT.	LENGTH OF SODDING FT.	S.Y.
66+52	3.0	432	144
34+75	3.0		

STATION	WIDTH OF SODDING FT.	LENGTH OF SODDING FT.	S.Y.
64+00	6.8	164	132
65+64	7.7		

STATION	WIDTH OF SODDING FT.	LENGTH OF SODDING FT.	S.Y.
67+30	3.5	502	181
36+84	3.0		

EXCAVATION = 91,311 C.Y.
EMBANKMENT = 0 C.Y.
EMBANKMENT + 20% = 0 C.Y.