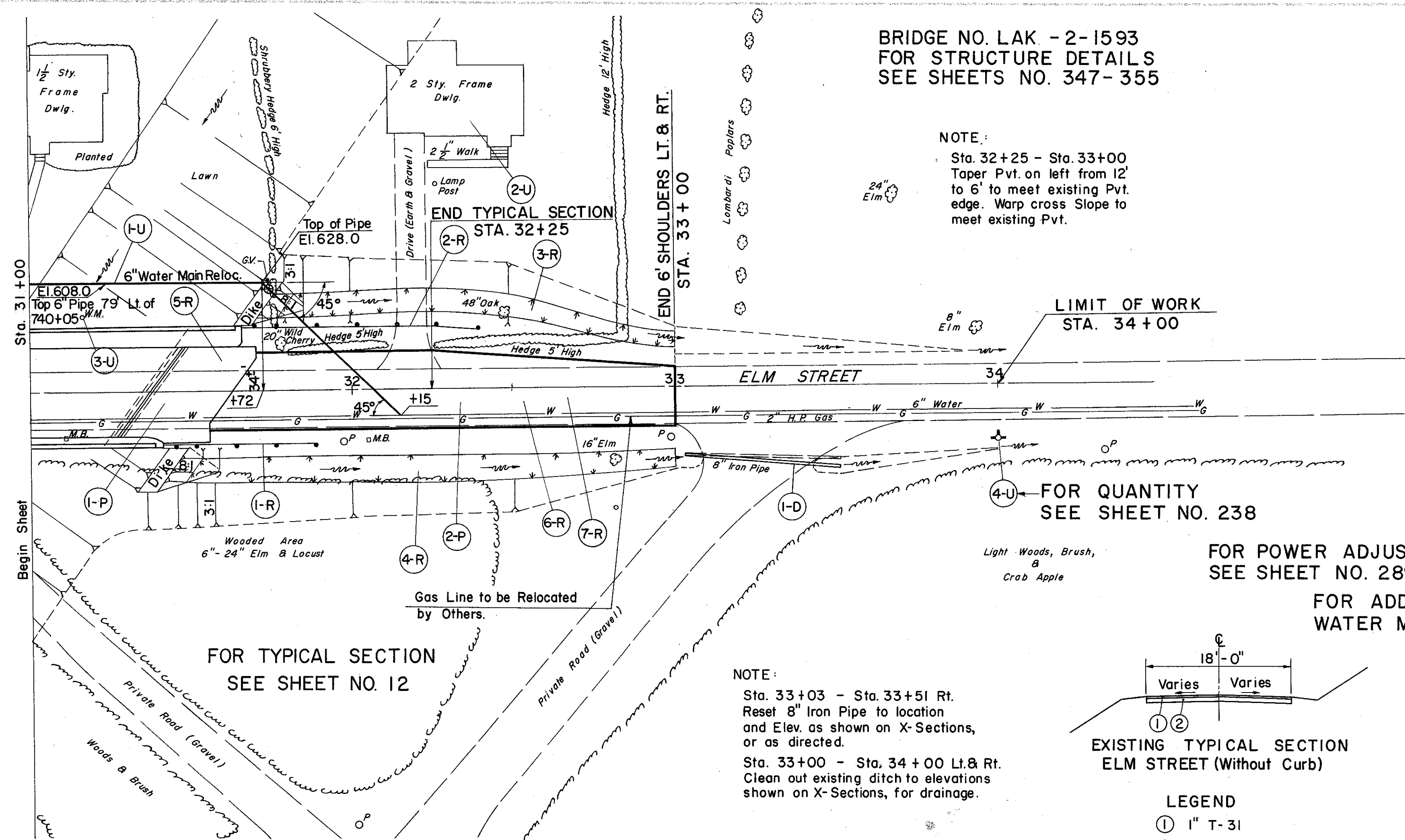
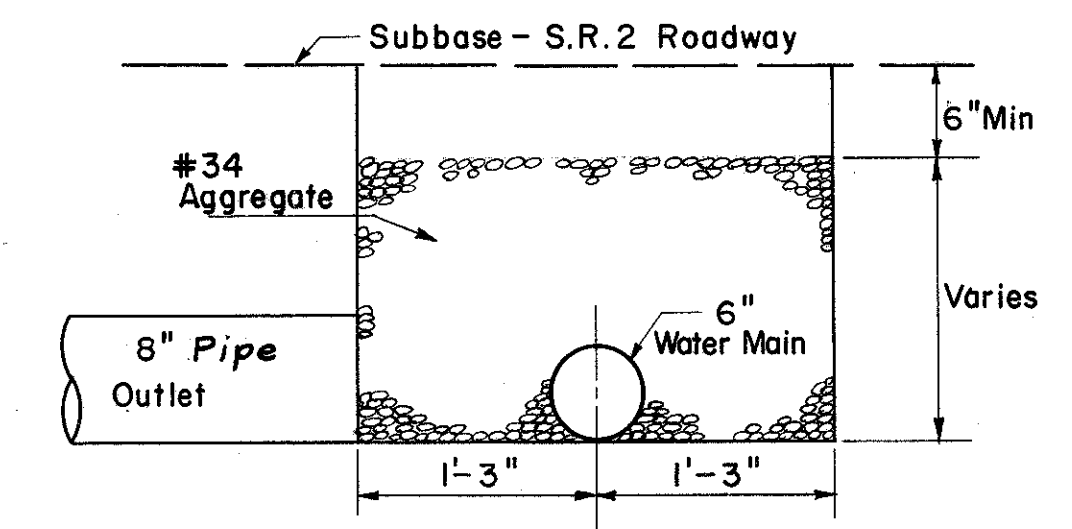


**BRIDGE NO. LAK - 2-1593
FOR STRUCTURE DETAILS
SEE SHEETS NO. 347-355**

**LAKE COUNTY
LAK-2-14.22**



(SEE X-SECTIONS FOR DEPTH)



(D) DRAINAGE

REF. NO.	STATION	SIDE	E-12 PIPE REMOVED FOR RE-USE & STORAGE 15' & UNDER		I-6 RELAYING PIPE FOR DRIVEWAYS 8"	
			FROM	TO	L.F.	L.F.
I-D	33+04	33+52	Rt.		48	48

(R) ROADWAY

REF. NO.	STATION	SIDE	E-1	I-9	I-15	L-9	L-9	L-10	
			COMP SUB-GRADE	STONE UNDER DRAINS NO. 2	GUARD RAIL STEEL BEAM STANDARD TYPE (DEEP)	COMMERCIAL FERTILIZER	SEEDING & PROTECT.	SODDING	
	FROM	TO	S.Y.	L.F.	L.F.	TONS	S.Y.	S.Y.	
1-R	31+39	31+89	Rt.		50				
2-R	31+64	32+39	Lt.		75				
3-R	31+80	33+00	Lt.					79	
4-R	31+51	33+00	Rt.					108	
5-R	31+38.39	31+63.39		82					
6-R	31+63.39	33+00		339	70				
7-R	31+43	34+00				0.118	1,314		
	TOTAL			421	70	125	0.118	1,314	187

(P) PAVEMENT

REF. NO.	STATION	SIDE	B-19	I-7	T-30	T-35
			AGGR. BASE COURSE	REINF. CONC. APPR. SLABS	BIT. PRIME COAT	ASPH. CONC. SURF. COURSE 2"
	FROM	TO	C.Y.	S.Y.	GAL.	C.Y.
1-P	31+38.39	31+63.39		82		
2-P	31+63.39	33+00	79		136	19
	TOTAL		79	82	136	19

(U) UTILITIES

REF. NO.	STATION	SIDE	I-124.03	I-124.03	I-124.08	I-124.11	S-29
			NEW WATER MAIN	C.I. FITTINGS VALVES & BOXES	SERVICES STOPS & BOXES	WATER METERS & BOXES	POROUS BACK-FILL
	FROM	TO	L.F.	EA.	EA.	EA.	C.Y.
1-U	31+00	32+15	Lt.	128	1	2	2
2-U	32+40		Lt.				
3-U	31+17		Lt.				
	TOTAL		128	1	2	2	8.22

STATION	WIDTH OF SODDING FT.	LENGTH OF SODDING FT.	S.Y.
31+51	7.2	149	108
33+00	5.9		

STATION	WIDTH OF SODDING FT.	LENGTH OF SODDING FT.	S.Y.
31+80	6.9	121	79
33+00	4.8		

EXCAVATION	677 C.Y.
EMBANKMENT	0 C.Y.
EMBANKMENT *20'	0 C.Y.

