

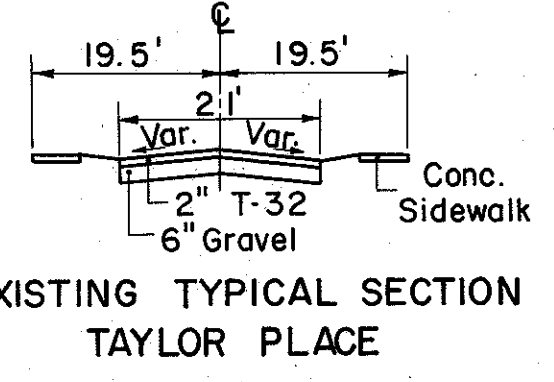
TYPICAL SECTION  
STA. 28 + 27.50 TO  
STA. 29 + 41.34

(E) Denotes Existing Elevations  
Note: Pavement to be Placed to edge of Existing Sanford Street Pavement.

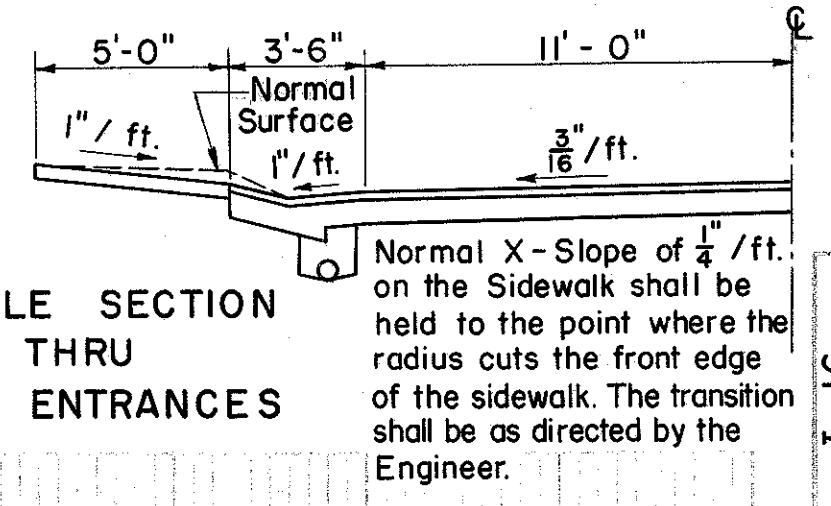
INTERSECTION DETAIL  
TAYLOR PLACE & SANFORD STREET

SEE BRIDGE PLAN FOR TREATMENT OF 36" R.C.P. (INTERCEPTOR) AT BRIDGE PIER. SHEET NO. 327

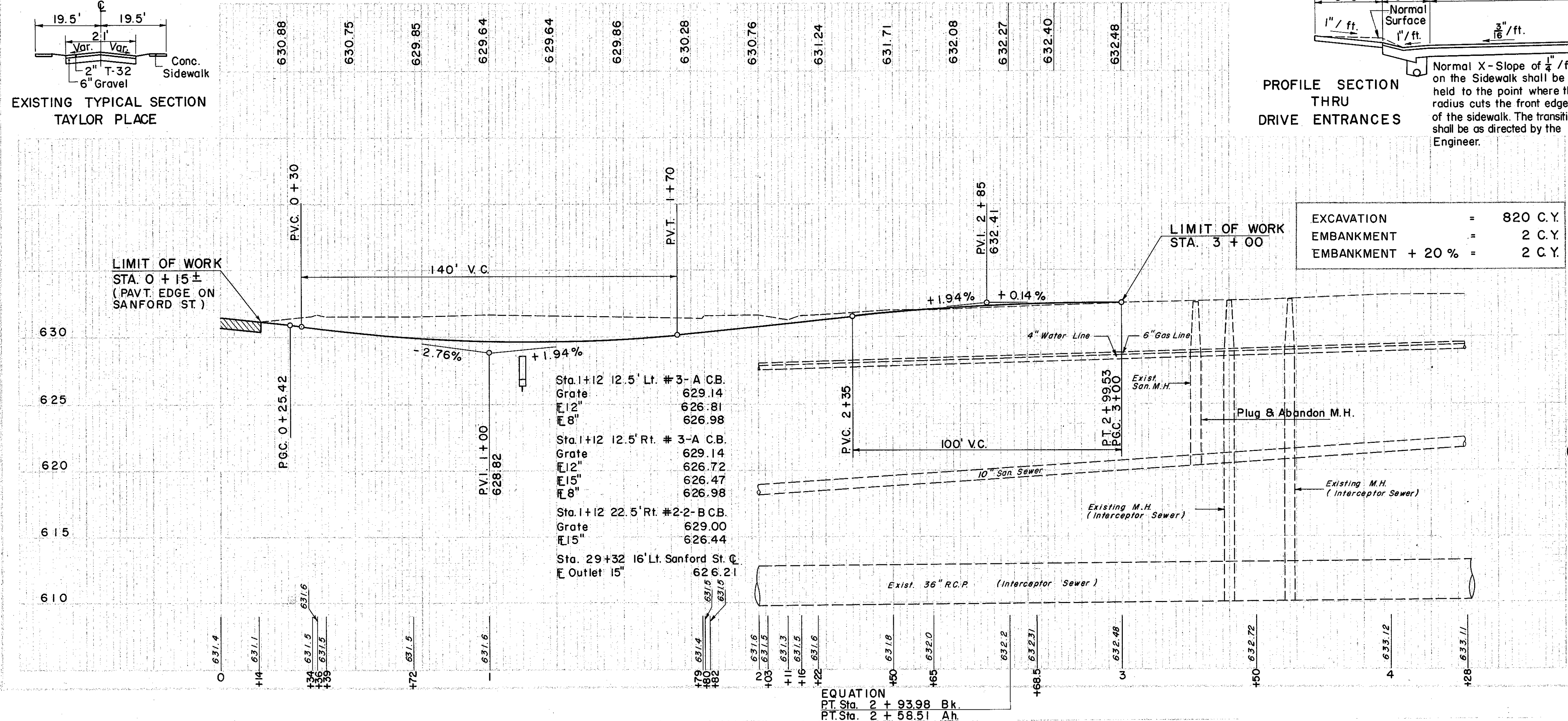
RELOC. TAYLOR PLACE CURVE DATA  
P.I. Sta. 2 + 00.64  
 $\Delta = 36^\circ 59' 30''$  Lt.  
R = 30000'  
L = 193.69'  
T = 100.35'  
No Superelevation



EXISTING TYPICAL SECTION  
TAYLOR PLACE



PROFILE SECTION THRU DRIVE ENTRANCES  
Normal X-Slope of 1/4\"/>



EXCAVATION = 820 C.Y.  
EMBANKMENT = 2 C.Y.  
EMBANKMENT + 20% = 2 C.Y.

REF. NO.	STATION		CLASS	DRAINAGE	I-7	I-8	I-16
	FROM	TO					
1-D	3+27	3+27	8\"/>				

REF. NO.	STATION		CLASS	ROADWAY	TOTAL
	FROM	TO			
1-P	0+15	3+00	3\"/>		

REF. NO.	STATION		UTILITIES	TOTAL
	FROM	TO		
1-U	1+71	1+71	EA	10
2-U	2+03	2+03	EA	10
3-U	2+60	2+60	EA	10
4-U	2+70	2+70	EA	10
5-U	3+20	3+20	EA	10
TOTAL				50

RELOC. TAYLOR PLACE STA. 0 + 00 TO STA. 4 + 28

\*For detail of Sanitary Sewer Conn. Item 1-9, see sheet No. 269