

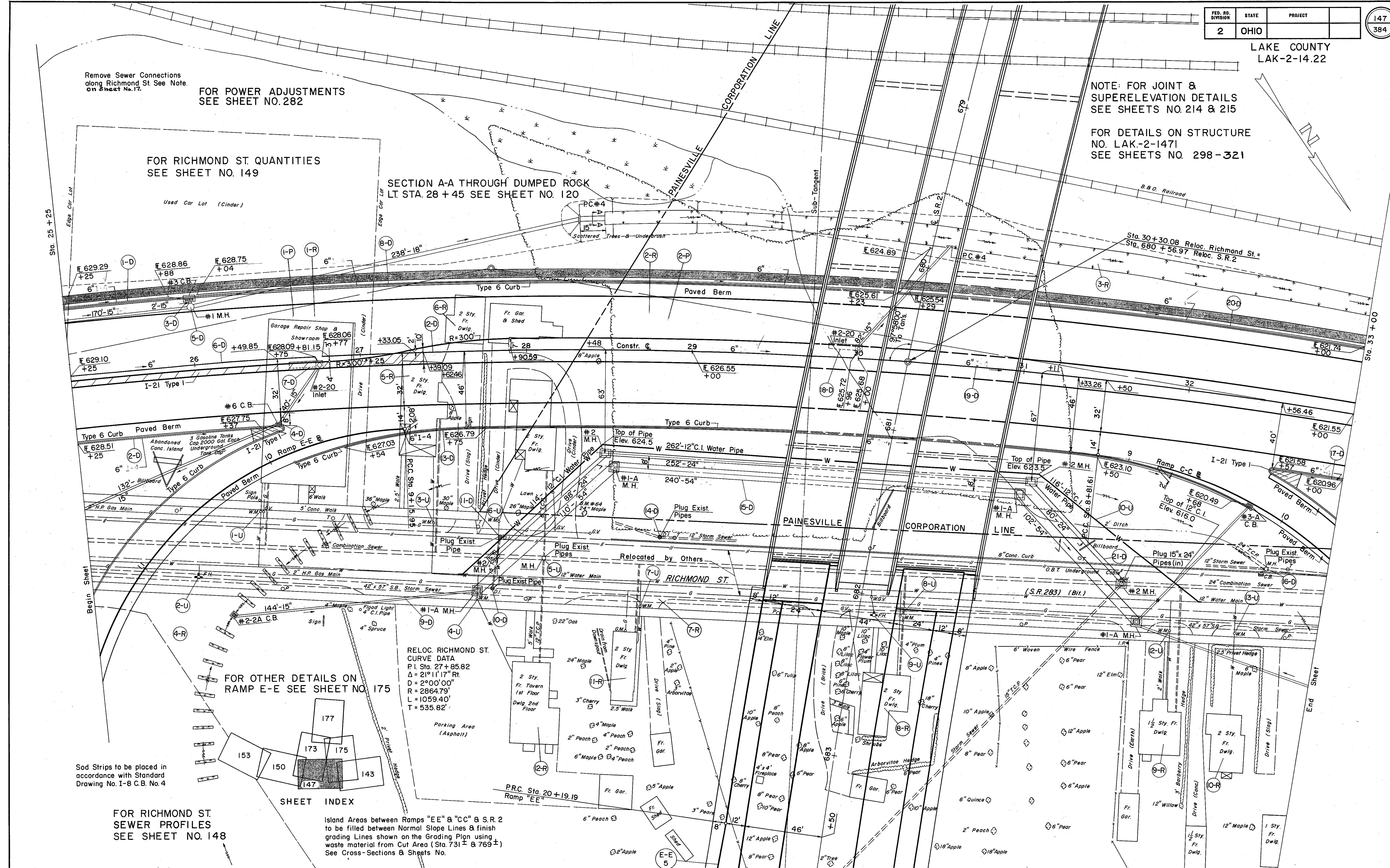
NOTE: FOR JOINT & SUPERELEVATION DETAILS SEE SHEETS NO. 214 & 215

FOR DETAILS ON STRUCTURE NO. LAK-2-147I SEE SHEETS NO. 298-321

FOR POWER ADJUSTMENTS SEE SHEET NO. 282

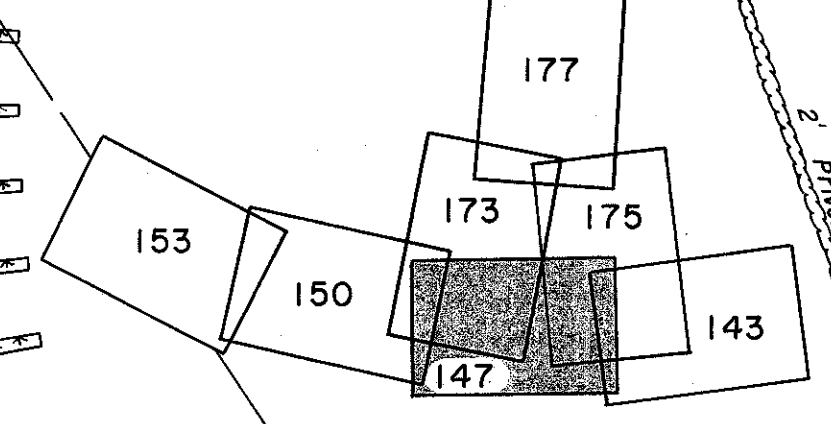
FOR RICHMOND ST QUANTITIES SEE SHEET NO. 149

SECTION A-A THROUGH DUMPED ROCK LT STA. 28 + 45 SEE SHEET NO. 120



RELOC. RICHMOND ST. CURVE DATA  
 P.I. Sta. 27 + 85.82  
 $\Delta = 21^\circ 11' 17''$  Rt.  
 $D = 2^\circ 00' 00''$   
 $R = 2864.79'$   
 $L = 1059.40'$   
 $T = 535.82'$

FOR OTHER DETAILS ON RAMP E-E SEE SHEET NO. 175



SHEET INDEX

Island Areas between Ramps "EE" & "CC" & S.R. 2 to be filled between Normal Slope Lines & finish grading Lines shown on the Grading Plan using waste material from Cut Area (Sta. 731 ± & 769 ±) See Cross-Sections & Sheets No.

Sod Strips to be placed in accordance with Standard Drawing No. I-8 C.B. No. 4

FOR RICHMOND ST. SEWER PROFILES SEE SHEET NO. 148