

FOR DETAILS OF BUTTON AVE. SEE SHEET NO. 139

FOR DETAILS OF CULVERT SEE SHEET NO. 261

Sta. 28+00 - 32+00
Cut Abandoned 12" Water Line & Cap
Exposed Ends. Pay under Item E-1.

Sta. 30+00.01 Reconst. Newell St. =
Sta. 651+99.35 Reloc. S.R. 2

NOTE: Abandoned Water Line Is owned by Diamond Alkali Co.

NOTE: Remove Sewer Connections along Newell St. See Note on Sheet 17.

Sta. 28+08 - 7' Rt.
Reconstruct Existing Manhole to grade. Adjust E. Elev. of Manhole to meet New Invert Elev. of 24" Outlet Pipe

Sta. 27+88 ±
Regulator Box to be adjusted to grade by building a Manhole over each Existing Cover directly on top of the present slab. Covers may be reused where size is correct, if not correct a new cover shall be supplied with the frame.

Sta. 27+00.00 Reconst. Newell St. =
Sta. 0+18.90 Reloc. Button Ave.

(S) STRUCTURES

REF. NO.	STATION	E-3 CHANNEL EXC.	I-2 Masonry Endwall	I-1 24" PIPE Class B-1
I-S	27+65	137	0.82	114

LAKE COUNTY
LAK-2-14.22

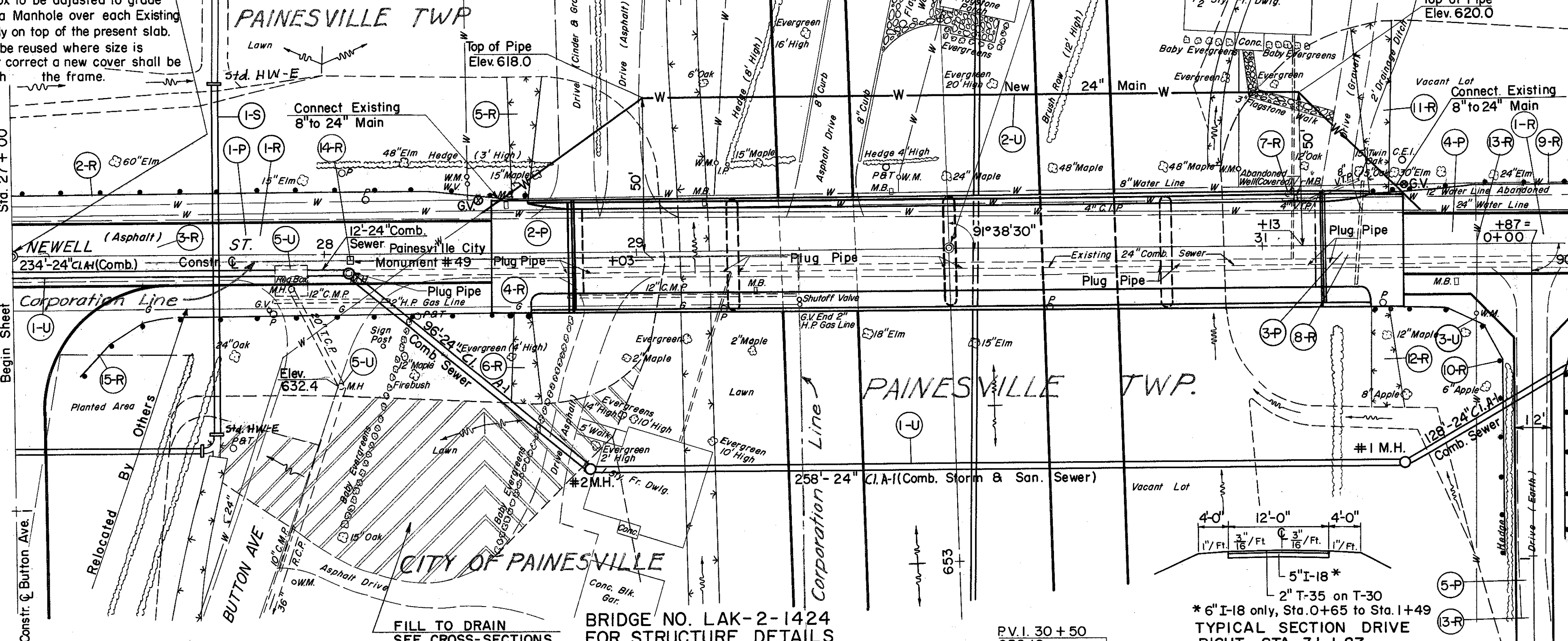
(U) UTILITIES

REF. NO.	STATION	S I D E	UTILITIES													
			I-1	I-5	I-8	I-124.03				I-124.08	I-124.10	I-124.11	I-124.11			
FROM TO			COMB. SWR Class A-1	ST. #1	ST. #2	M.H. RE-CONST. TO GRADE	NEW WATER MAIN	CAST IRON BEND	IRON BEND	VAL'S & BOXES	24" X 8" WYE	SERVICE STOPS & BOXES REMOVED	SERVICE BOXES ADJUSTED TO GRADE	WATER METER BOXES REMOVED	WATER METER BOXES RESET	
I-U	27+00	Rt.	320	258	1	1	2	18	296	1	1	2	2	2	4	1
2-U	28+51	Rt.														
3-U	31+68	Rt.														
4-U	See Tab Below															
5-U	27+88	Rt.					3									
TOTAL			320	258	1	1	5	18	296	1	1	2	2	2	4	1

*No Federal Participation

REF. NO.	STATION	S I D E	ROADWAY									
			E-1 COMP SUB-GRADE	I-9 STONE UNDER DRAINS NO. 2	I-15 GUARD RAIL STEEL BEAM STD. TYPE (DEEP)	L-9 COMMERCIAL FERTILIZER	L-9 SEEDING & PROTECT	L-10 SODDING FOR SPECIAL BERM & SLOPE PROTECT	L-10 SODDING	SPECIAL DRILLED WELL ABND.	I-8 MONUMENT ASSEMBLY	
FROM TO			S.Y.	L.F.	L.F.	TONS	S.Y.	S.Y.	S.Y.	EA.	EA.	
I-R	27+00	Rt.	484	120		0.318	3532					
2-R	26+53	Rt.										
3-R	27+65	Rt.							6			
4-R	28+53.76	Rt.	88									
5-R	28+63	Rt.							47			
6-R	28+64	Rt.							31			
7-R	31+08	Rt.										
8-R	31+21.26	Rt.	88									
9-R	31+35	Rt.			62.5							
10-R	31+35	Rt.			112.5							
11-R	31+37	Rt.							73			
12-R	31+37	Rt.							35			
13-R	31+87	Rt.	242									
14-R	28+08	Rt.										
15-R	OH57 Button	Rt.			150.0							
TOTAL			902	120	537.5	0.318	3532	186	6	1	1	

STATION	S I D E	WATER METERS & BOXES REMOVED (SEE NOTE)	SERVICE BOXES REMOVED (SEE NOTE)
28+46	Lt.		
29+27	Lt.		
29+85	Lt.		
30+93	Lt.		

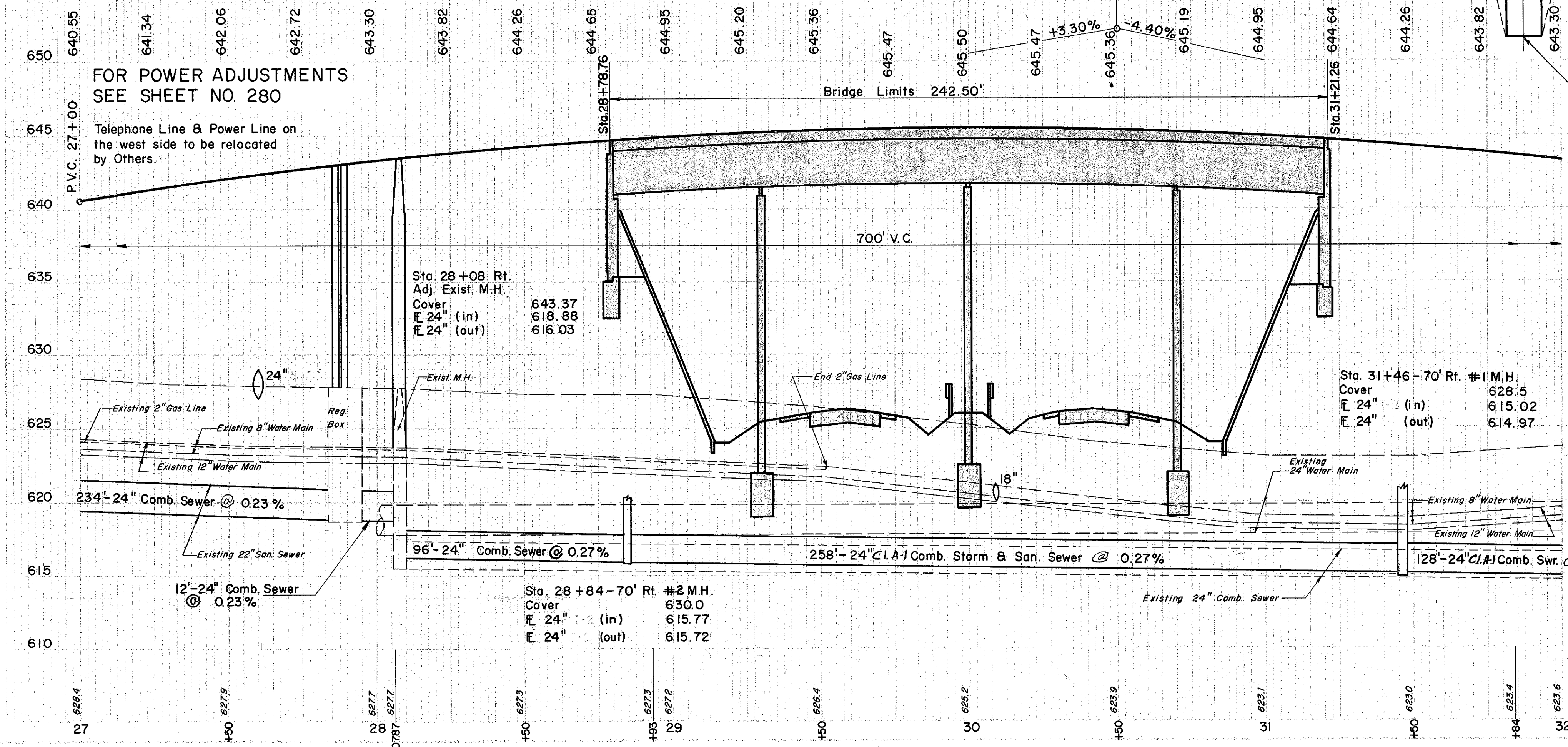


BRIDGE NO. LAK-2-1424
FOR STRUCTURE DETAILS
SEE SHEETS NO. 291-297

*6" I-18 only, Sta. 0+65 to Sta. 1+49
TYPICAL SECTION DRIVE
RIGHT STA. 31+87

FOR POWER ADJUSTMENTS
SEE SHEET NO. 280

Telephone Line & Power Line on the west side to be relocated by Others.



Sta. 28+08 Rt.
Adj. Exist. M.H.
Cover 643.37
E 24" (in) 618.88
E 24" (out) 616.03

Sta. 31+46 - 70' Rt. #1 M.H.
Cover 628.5
E 24" (in) 615.02
E 24" (out) 614.97

Sta. 28+84 - 70' Rt. #2 M.H.
Cover 630.0
E 24" (in) 615.77
E 24" (out) 615.72

(P) PAVEMENT

REF. NO.	STATION	S I D E	PAVEMENT				
			B-19 AGGR. BASE COURSE	I-7 REINF. CONC. APPR. SLABS 13"	I-18 STAB. CRUSHED AGGR.	T-30 BIT. PRIME COAT	T-35 ASPH. CONC. SURF. COURSE 2"
FROM TO			C.Y.	S.Y.	C.Y.	GAL.	C.Y.
I-P	27+00	Rt.	80			137	19
2-P	28+53.76	Rt.		88			
3-P	31+21.26	Rt.		88			
4-P	31+46.26	Rt.	28			48	6.5
5-P	31+87	Rt.			36	52	7
TOTAL			108	176	36	237	32.5

ROADWAY

STATION	S I D E	I-18 STAB. CRUSHED AGGR.	M-10 CALCIUM CHLORIDE	SPECIAL MIXING CHLORIDE AND AGGR.
FROM TO		C.Y.	TON	S.Y.
27+00	Rt.	18	0.113	108
31+46.26	Rt.	4	0.025	24
TOTAL		22	0.138	132

Excavation 39 C.Y.
Earthwork 13,948 C.Y.
Equipment 20 16,738 C.Y.