

(P) PAVEMENT

REF. NO.	STATION	SIDE	B-19	I-13	I-18	T-30	T-35
			AGGR. BASE COURSE	CONC. SIDE-WALK 4" S.F.	STAB. CRUSHED AGGR. C.Y.	BIT. PRIME COAT GAL.	ASP. CONC. SURF. COURSE 2" C.Y.
1-P	23+75	Rt.	240			288	40
2-P	24+00	Lt.			4	13	2
3-P	24+29	Rt.			24	70	10
4-P	25+75	Lt.			15	44	6
5-P	25+94	Rt.			20	59	8
6-P	26+10	Lt.					
TOTAL			240	30	63	474	66

(R) ROADWAY

REF. NO.	STATION	SIDE	E-1	E-8	I-9	E-4	L-7	L-8	L-9	L-9
			COMP. SUB-GRADE S.Y.	REMOVAL & DISPOSAL OF EXISTING SIDEWALK S.F.	STONE UNDER DRAINS NO. 2 L.F.	GRANULAR BORROW C.Y.	RIPRAP FOR TREE PROTECT. S.Y.	AGGR. FOR TREE ROOT AERATION C.Y.	COMMER. FERTILIZER TONS	SEEDING & PROTECT. S.Y.
1-R	23+75	Rt.	1081		165					
2-R	24+00	Lt.	29							
3-R	24+29	Rt.	169							
4-R	25+75	Lt.	111							
5-R	25+94	Rt.	147							
6-R	26+02	Lt.					6	8		
7-R	26+26	Rt.					5	8		
8-R	26+53	Lt.					6	10		
9-R	26+10	Rt.		21						
10-R	26+80	Lt.				203				
TOTAL			1537	21	165	203	17	26	0.181	2,014

(D) DRAINAGE

REF. NO.	STATION	SIDE	I-1
			PIPE Class F-1
1-D	24+48	Rt.	30
2-D	25+80	Lt.	30
TOTAL			60

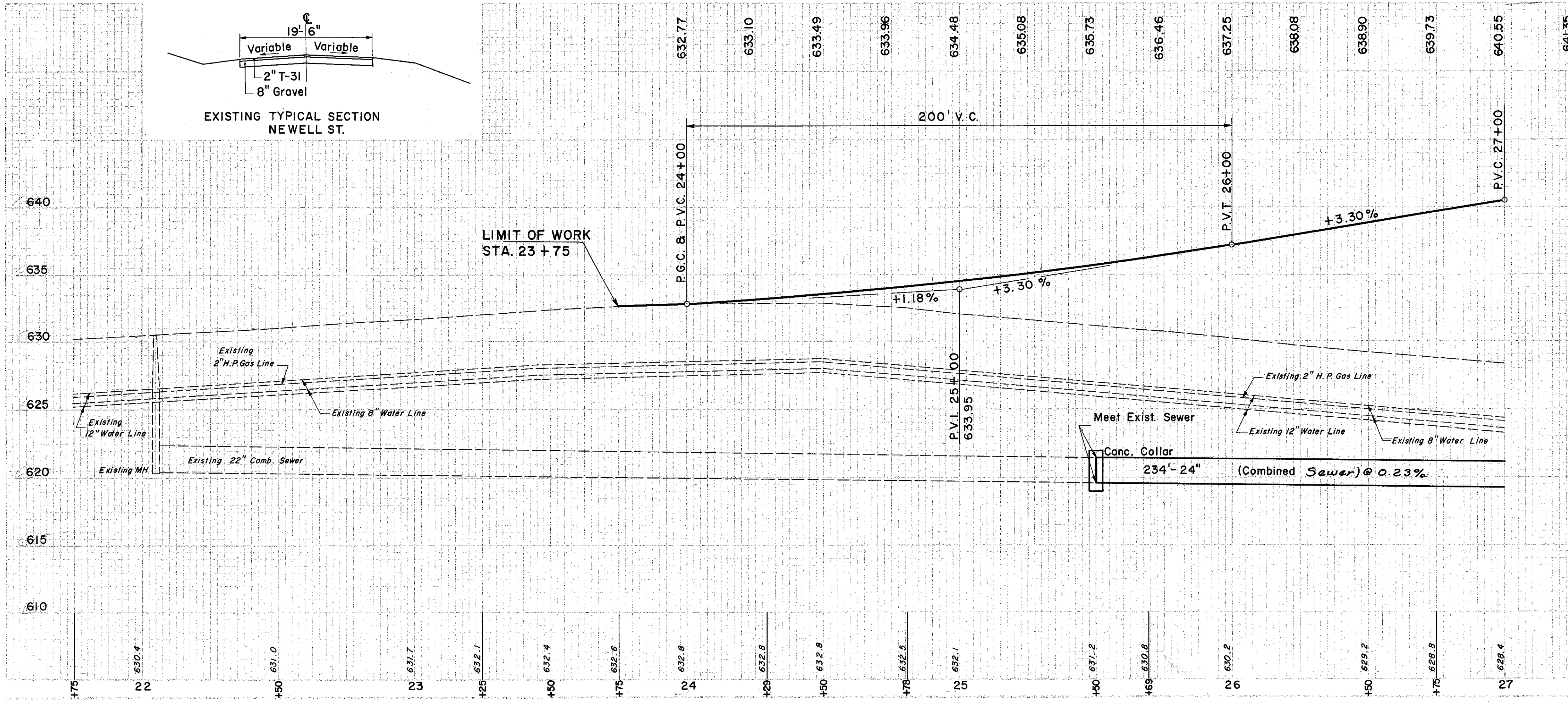
(R) ROADWAY (CONT'D)

STATION	SIDE	I-18	M-10	SPECIAL
		STAB. CRUSHED AGGR. C.Y.	CALCIUM CHLORIDE TONS	MIXING CHLORIDE AND AGGR. S.Y.
23+75	Rt.	18	0.113	108
TOTAL		18	0.113	108

(U) UTILITIES

REF. NO.	STATION	SIDE	I-1	I-5	I-124.06	I-124.08	I-124.10	I-124.11	I-124.11
			COMB. SWR. Class A-1, M-6.6(d) 24"	24" X 8" WYE M-6.6(d)	FIRE HYDRANTS REMOVED & RESET EA.	SERVICE STOPS & BOXES REMOVED EA.	SERVICE BOXES ADJUSTED TO GRADE EA.	WATER METERS REMOVED & BOXES EA.	WATER METERS & BOXES REMOVED EA.
1-U	25+50	Rt.	142	2					
2-U	25+78	Lt.							
3-U	24+30	Rt.							
4-U	26+74	Lt.							
5-U	24+50	Rt.							
6-U	26+87	Lt.							
TOTAL			142	2			4	3	

* No Federal Participation



Excavation	166 C.Y.
Embarkment	2,610 C.Y.
Embarkment @ 20'	3,132 C.Y.