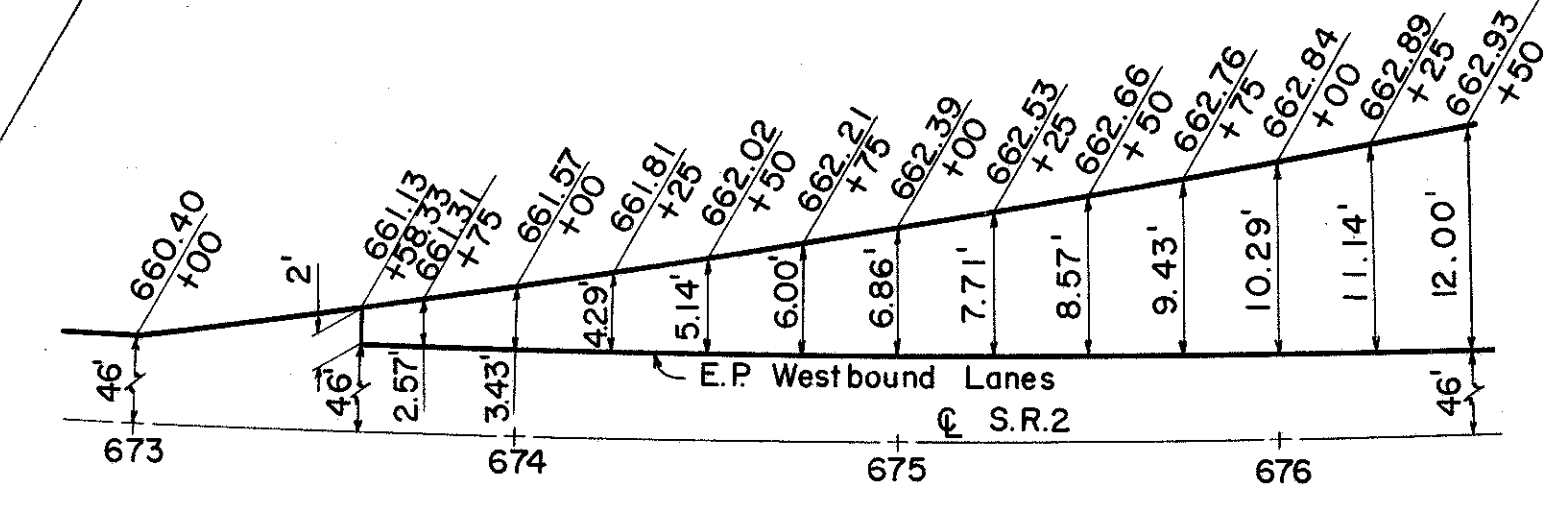


CURVE DATA
LT. MEDIAN EDGE
Δ = 8° 25' 17" LT.
D = 1° 30' 00"
R = 3819.72'
L = 561.43'
T = 281.22'

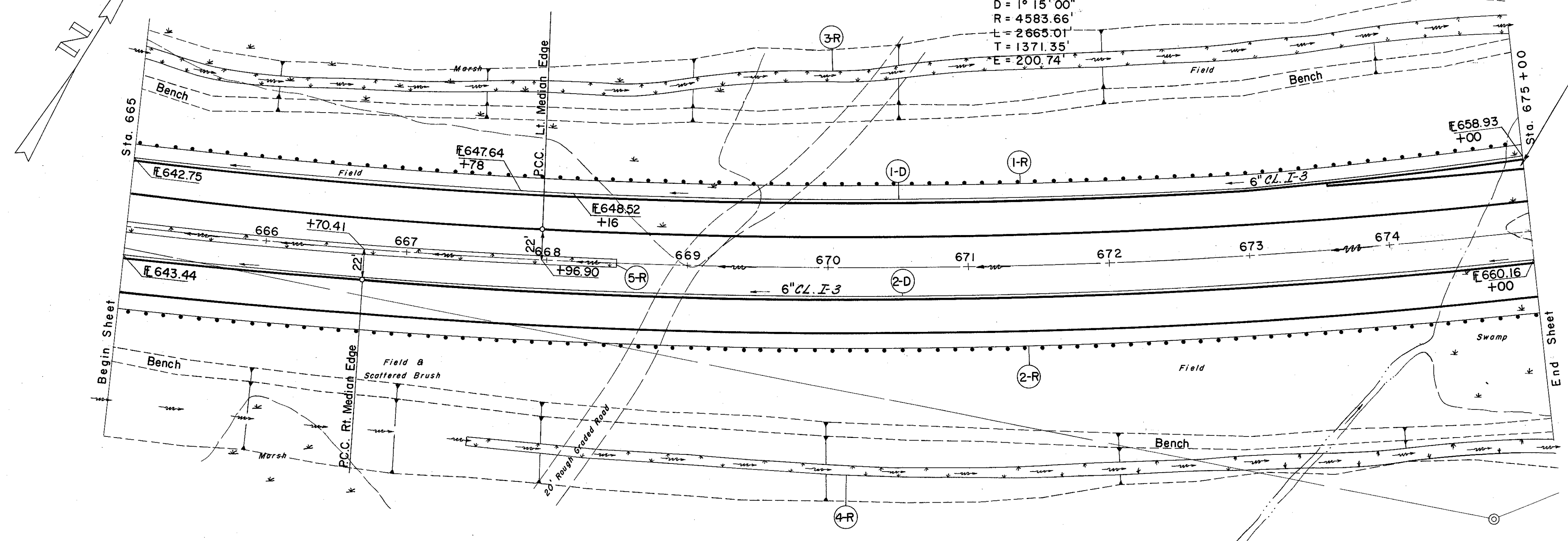
CURVE DATA
RT. MEDIAN EDGE
Δ = 6° 50' 25" LT.
D = 1° 00' 00"
R = 5729.58'
L = 684.03'
T = 342.42'

FOR PAVEMENT QUANTITIES
SEE SHEET NO. 32
FOR SHOULDER & PAVED
BERM TRANSITIONS SEE
SHEET NO. 217

CURVE DATA
P.I. Sta. 674 + 94.54
Δ = 33° 18' 45" LT.
D = 1° 15' 00"
R = 4583.66'
L = 2665.01'
T = 1371.35'
E = 200.74'



ACCELERATION LANE PAVEMENT TRANSITION



(D) DRAINAGE

REF. NO.	STATION	SIDE	6" PIPE CLASS I-3	SHALLOW L.F.
1-D	665+00	675+00	LT	990
2-D	665+00	675+00	RT	1004
TOTAL				1994

(R) ROADWAY

REF. NO.	STATION	SIDE	I-15 GUARD RAIL STEEL BEAM STD. TYPE (DEEP)	L-10 SODDING S.Y.
1-R	665+03	675+02	LT	987.5
2-R	665+07	674+98	Rt	1000
3-R	665+00	675+00	Lt	1089
4-R	667+50	675+00	Rt	701
5-R	665+00	668+50	CL	261
TOTAL				1987.5 2,051

SODDING LEFT DITCH

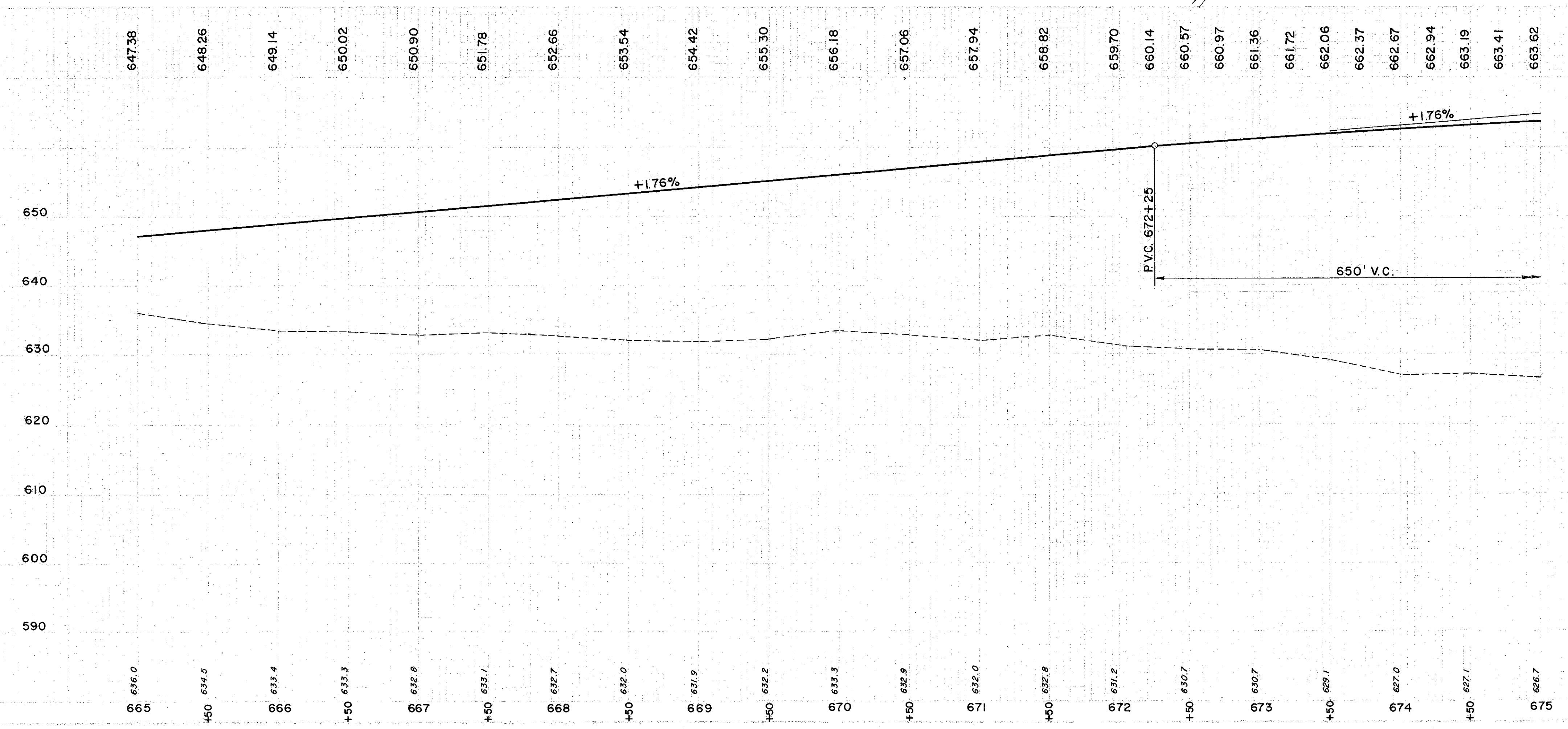
STATION	WIDTH OF SODDING FT.	LENGTH OF SODDING FT.	S.Y.
665+00	6.6	923	1015
674+50	13.2	51	74
675+00	12.9		
SUB-TOTAL			1089

SODDING MEDIAN DITCH

STATION	WIDTH OF SODDING FT.	LENGTH OF SODDING FT.	S.Y.
665+00	7.7	350	261
668+50	5.7		
672+25	10.0	50	56
672+75	10.0		
SUB-TOTAL			317

SODDING RIGHT DITCH

STATION	WIDTH OF SODDING FT.	LENGTH OF SODDING FT.	S.Y.
667+50	6.0	769	701
675+00	10.4		
SUB-TOTAL			701



7,070 C.Y.
150,943 C.Y.
181,132 C.Y.