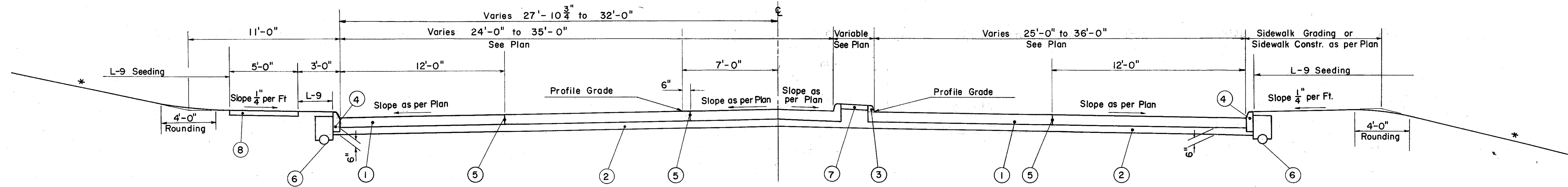


TYPICAL SECTIONS

FED. RD. DIVISION	STATE	PROJECT	10
2	OHIO		384

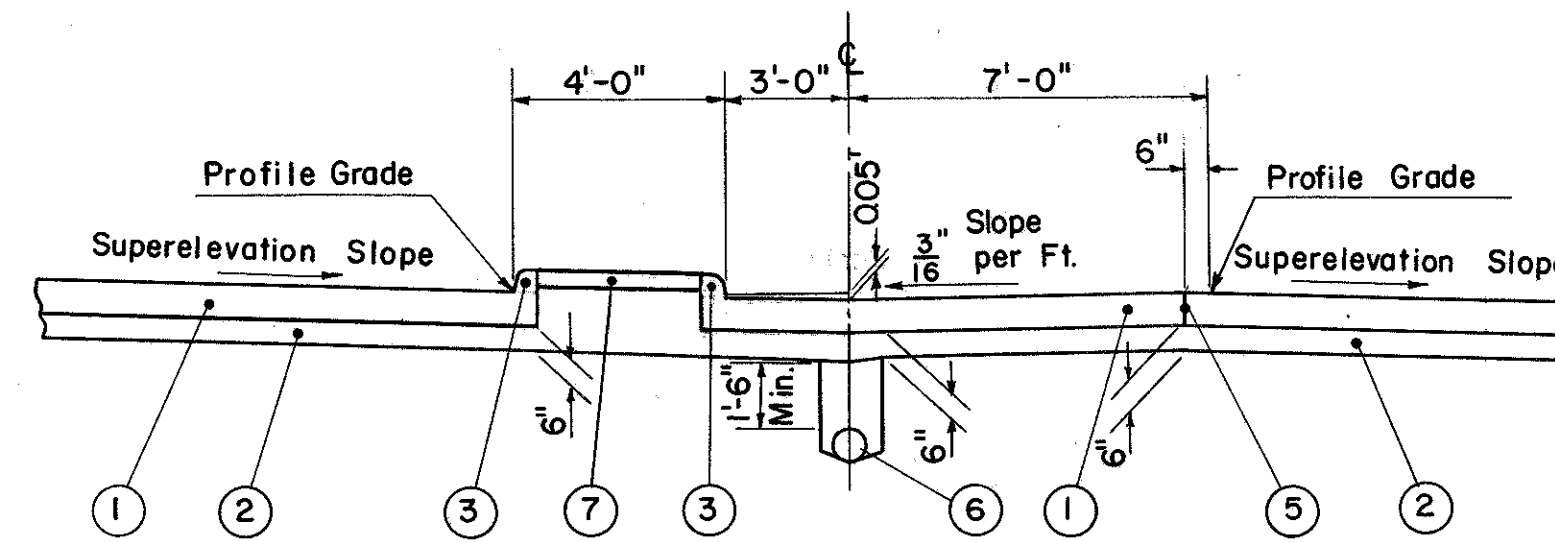
LAKE COUNTY
LAK-2-14.22

TYPE T-71 RELOCATION OF RICHMOND STREET



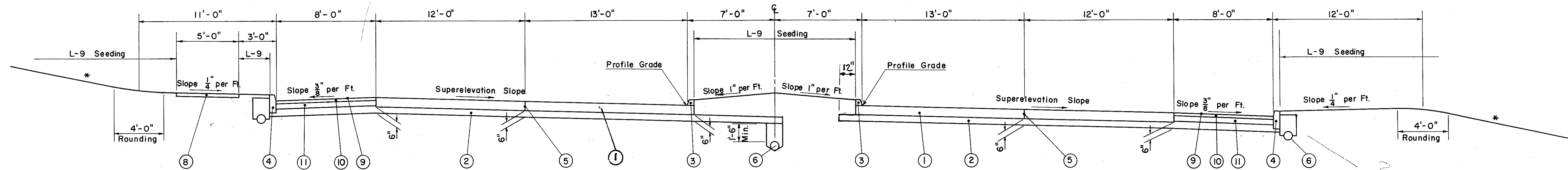
NORMAL SECTION

LIMITING STATIONS
STA. 19+90.00 TO STA. 22+00.00



SUPERELEVATED SECTION THRU STANDBY LANE

LIMITING STATIONS
STA. 22+00.00 TO STA. 27+90.59
STA. 33+95.64 TO STA. 38+88.10



SUPERELEVATED SECTION

LIMITING STATIONS
STA. 27+90.59 TO STA. 33+95.64

LEGEND

- ① T-71 9" Reinforced Portland Cement Concrete Pavement
- ② I-22 Variable Depth Subbase, Grading A or B see note on Sheet No 17.
- ③ I-12 Concrete Curb, Standard Type 2A
- ④ I-12 Concrete Curb, Standard Type 6
- ⑤ Standard Longitudinal Joint
- ⑥ I-1 6" Class I:3 Pipe
- ⑦ I-21 Concrete Median, Type 1
- ⑧ I-13 4" Concrete Sidewalk
- ⑨ T-31 Bituminous Surface Treatment
- #⑩ B-219 3" Waterpoofed Aggregate Base Course
- ⑪ I-18 5" Stabilized Crushed Aggregate Shoulders & Approaches

* Thickness shown is "designed" thickness as described in Sec. B-21.01.

* As shown on Cross-Sections and/or Grading Plan

NOTE:
Full Super to be $\frac{3}{16}$ per Ft.