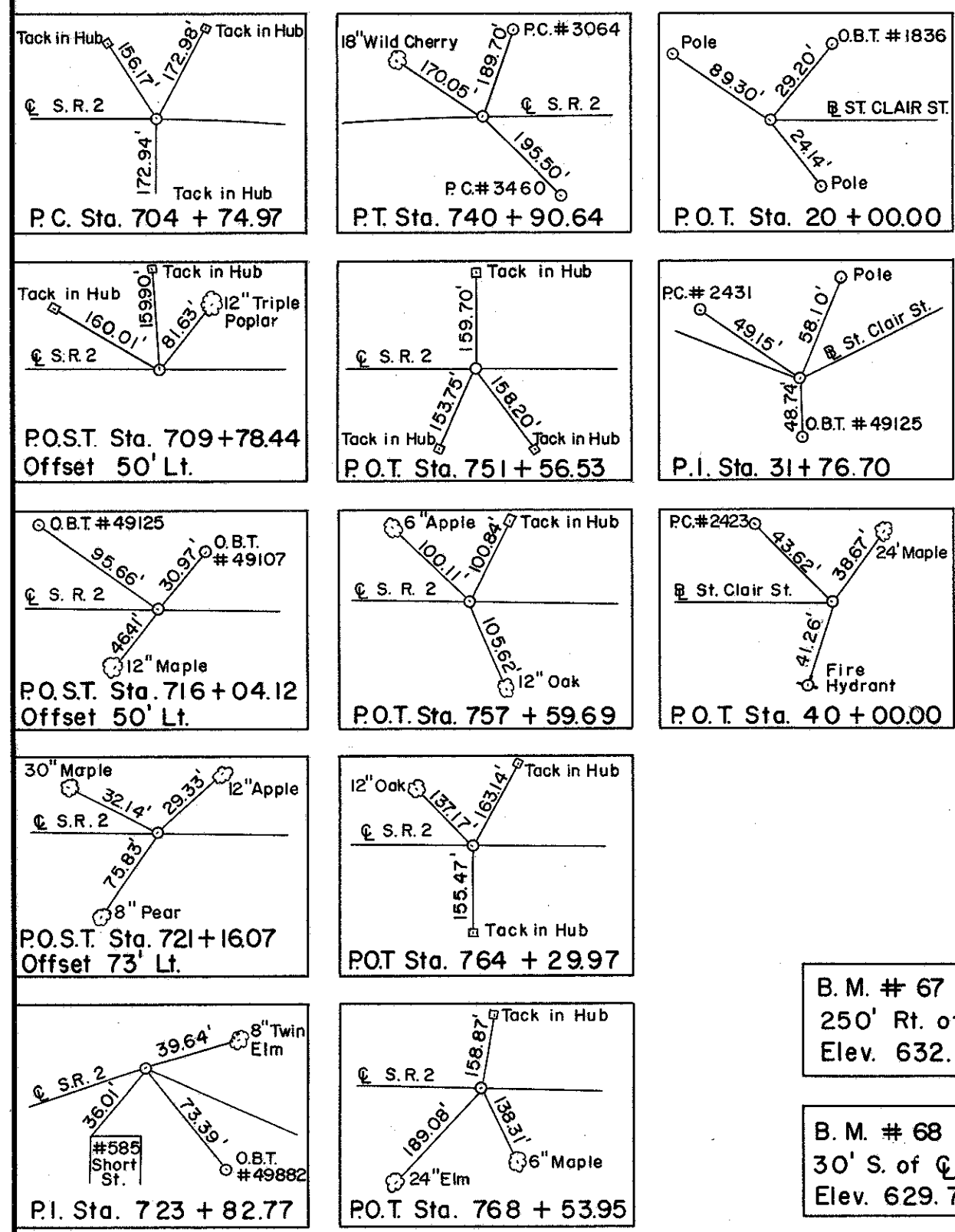
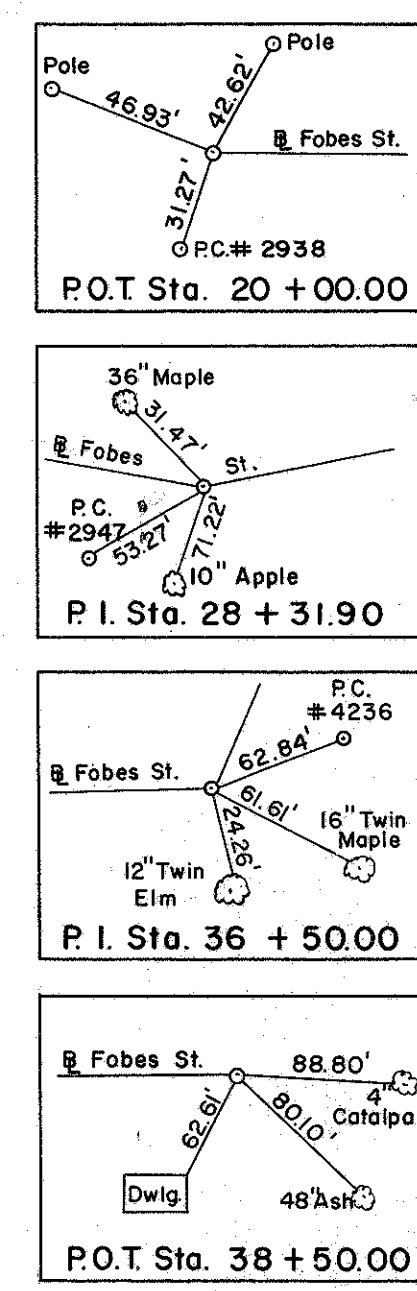
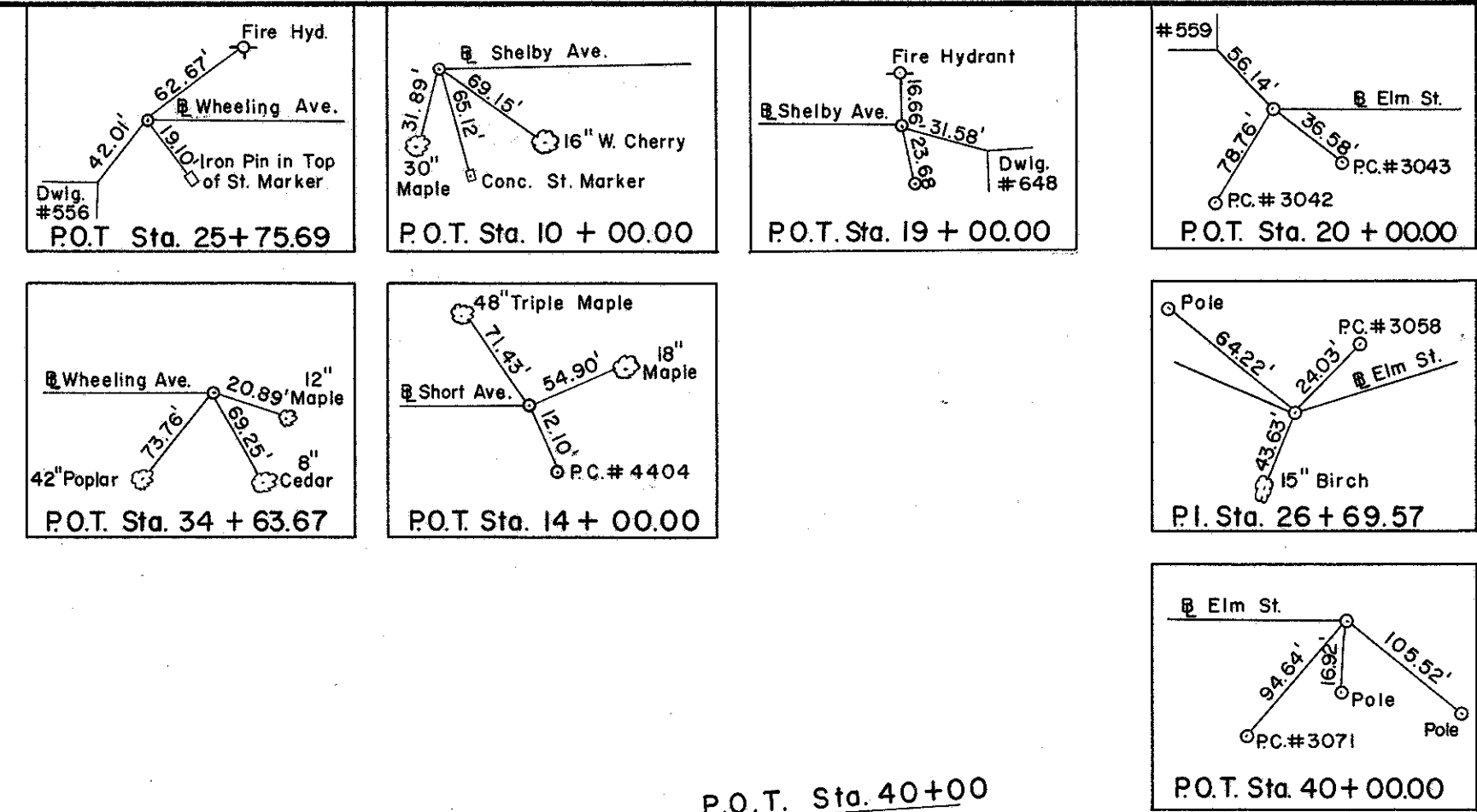
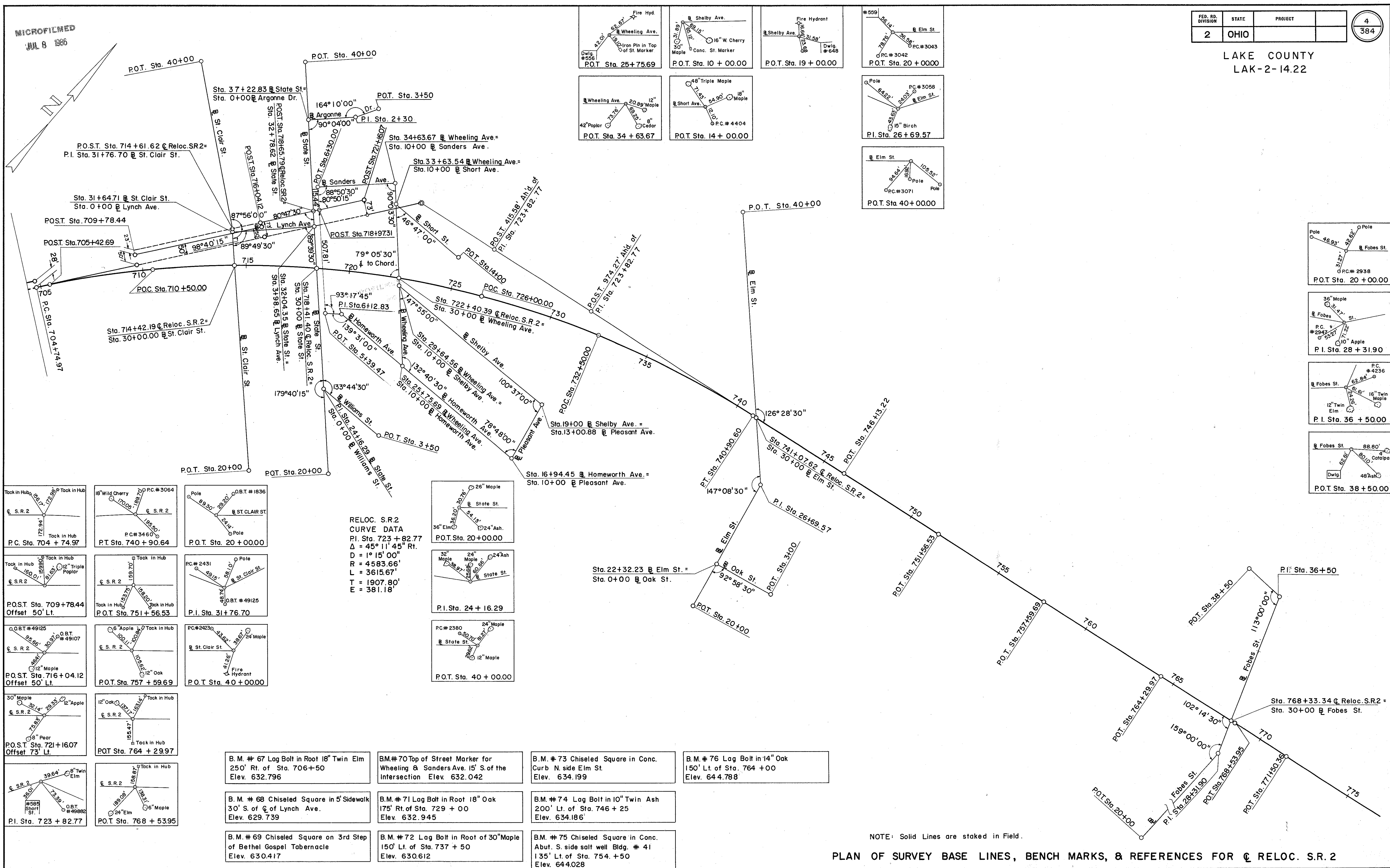


MICROFILMED
JUL 8 1986

FED. RD. DIVISION	STATE	PROJECT	
2	OHIO		

4
384

LAKE COUNTY
LAK-2-14.22



RELOC. S.R.2
CURVE DATA
P.I. Sta. 723 + 82.77
 $\Delta = 45^\circ 11' 45''$ Rt.
 $D = 1^\circ 15' 00''$
 $R = 4583.66'$
 $L = 3615.67'$
 $T = 1907.80'$
 $E = 381.18'$

- B.M. # 67 Lag Bolt in Root 18" Twin Elm 250' Rt. of Sta. 706+50 Elev. 632.796
- B.M. # 68 Chiseled Square in 5' Sidewalk 30' S. of ϕ of Lynch Ave. Elev. 629.739
- B.M. # 69 Chiseled Square on 3rd Step of Bethel Gospel Tabernacle Elev. 630.417
- B.M. # 70 Top of Street Marker for Wheeling & Sanders Ave. 15' S. of the Intersection Elev. 632.042
- B.M. # 71 Lag Bolt in Root 18" Oak 175' Rt. of Sta. 729 + 00 Elev. 632.945
- B.M. # 72 Lag Bolt in Root of 30" Maple 150' Lt. of Sta. 737 + 50 Elev. 630.612
- B.M. # 73 Chiseled Square in Conc. Curb N. side Elm St. Elev. 634.199
- B.M. # 74 Lag Bolt in 10" Twin Ash 200' Lt. of Sta. 746 + 25 Elev. 634.186'
- B.M. # 75 Chiseled Square in Conc. Abut. S. side salt well Bldg. # 41 135' Lt. of Sta. 754. + 50 Elev. 644.028
- B.M. # 76 Lag Bolt in 14" Oak 150' Lt. of Sta. 764 + 00 Elev. 644.788

NOTE: Solid Lines are staked in Field.

PLAN OF SURVEY BASE LINES, BENCH MARKS, & REFERENCES FOR ϕ RELOC. S.R. 2