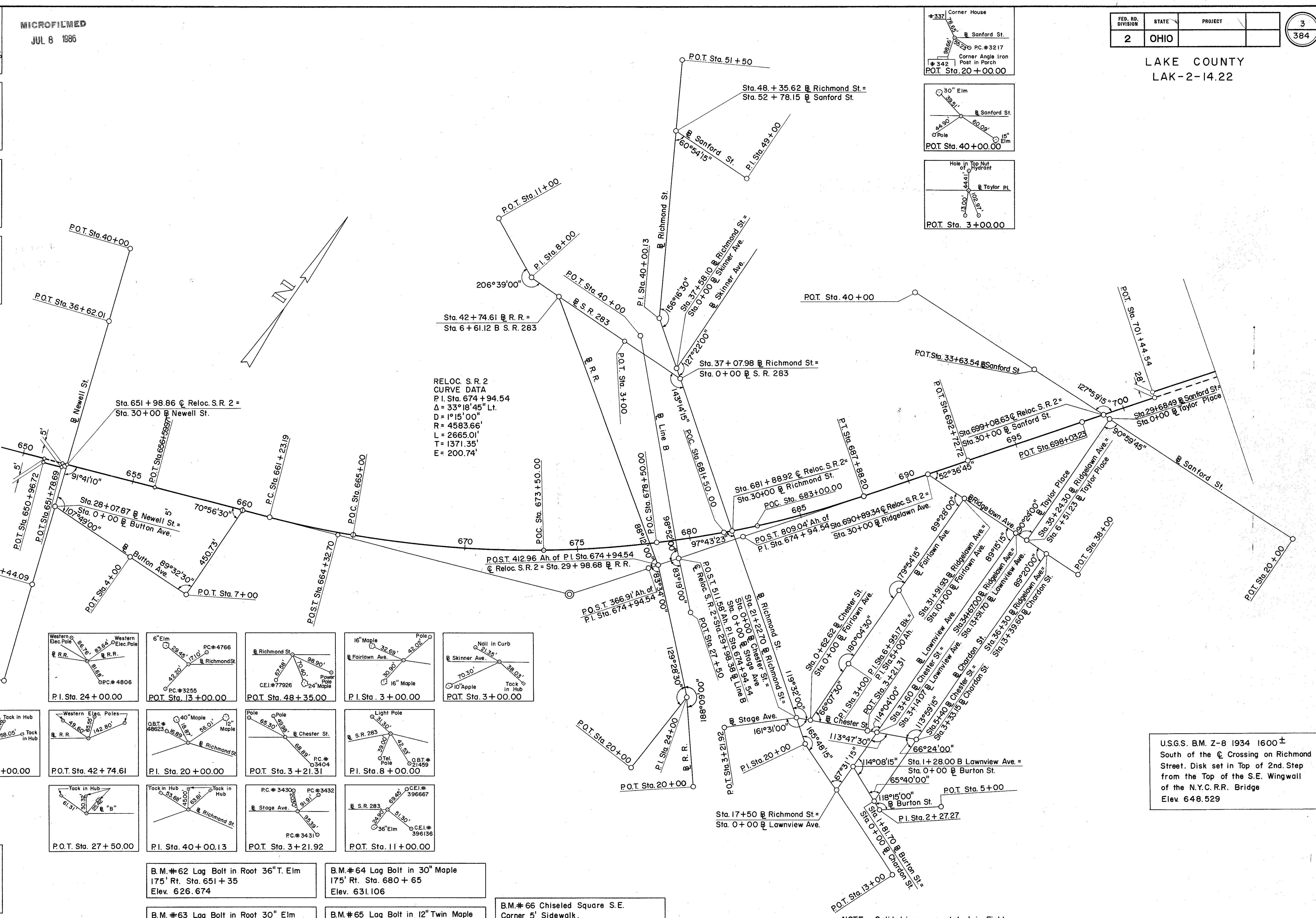
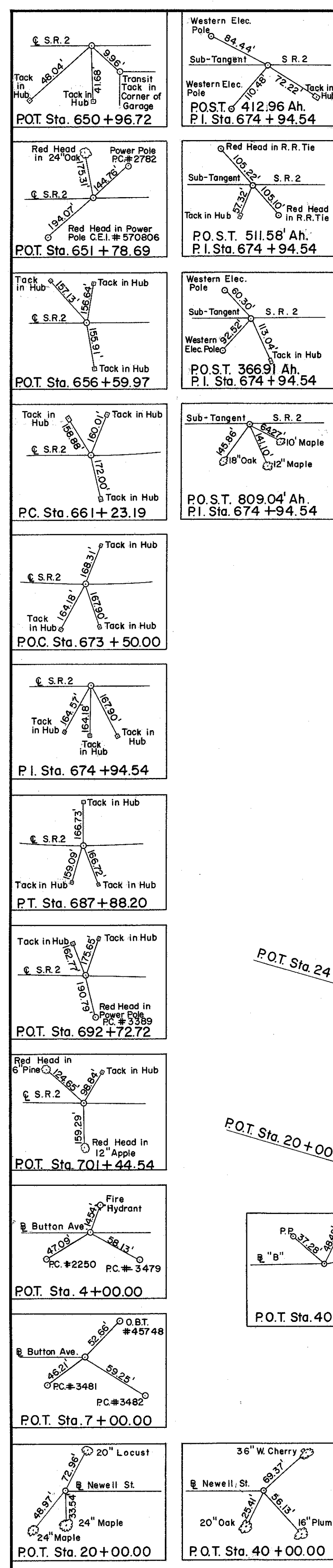


LAKE COUNTY
LAK-2-14.22

MICROFILMED
JUL 6 1986



RELOC. S.R. 2
CURVE DATA
P.I. Sta. 674 + 94.54
 $\Delta = 33^\circ 18' 45''$ Lt.
 $D = 1^\circ 15' 00''$
 $R = 4583.66'$
 $L = 2665.01'$
 $T = 1371.35'$
 $E = 200.74'$

U.S.G.S. B.M. Z-8 1934 1600 ±
South of the \square Crossing on Richmond Street. Disk set in Top of 2nd Step from the Top of the S.E. Wingwall of the N.Y.C.R.R. Bridge
Elev. 648.529

NOTE: Solid Lines are staked in Field.
PLAN OF SURVEY BASE LINES, BENCH MARKS, & REFERENCES FOR \square RELOC. S.R. 2