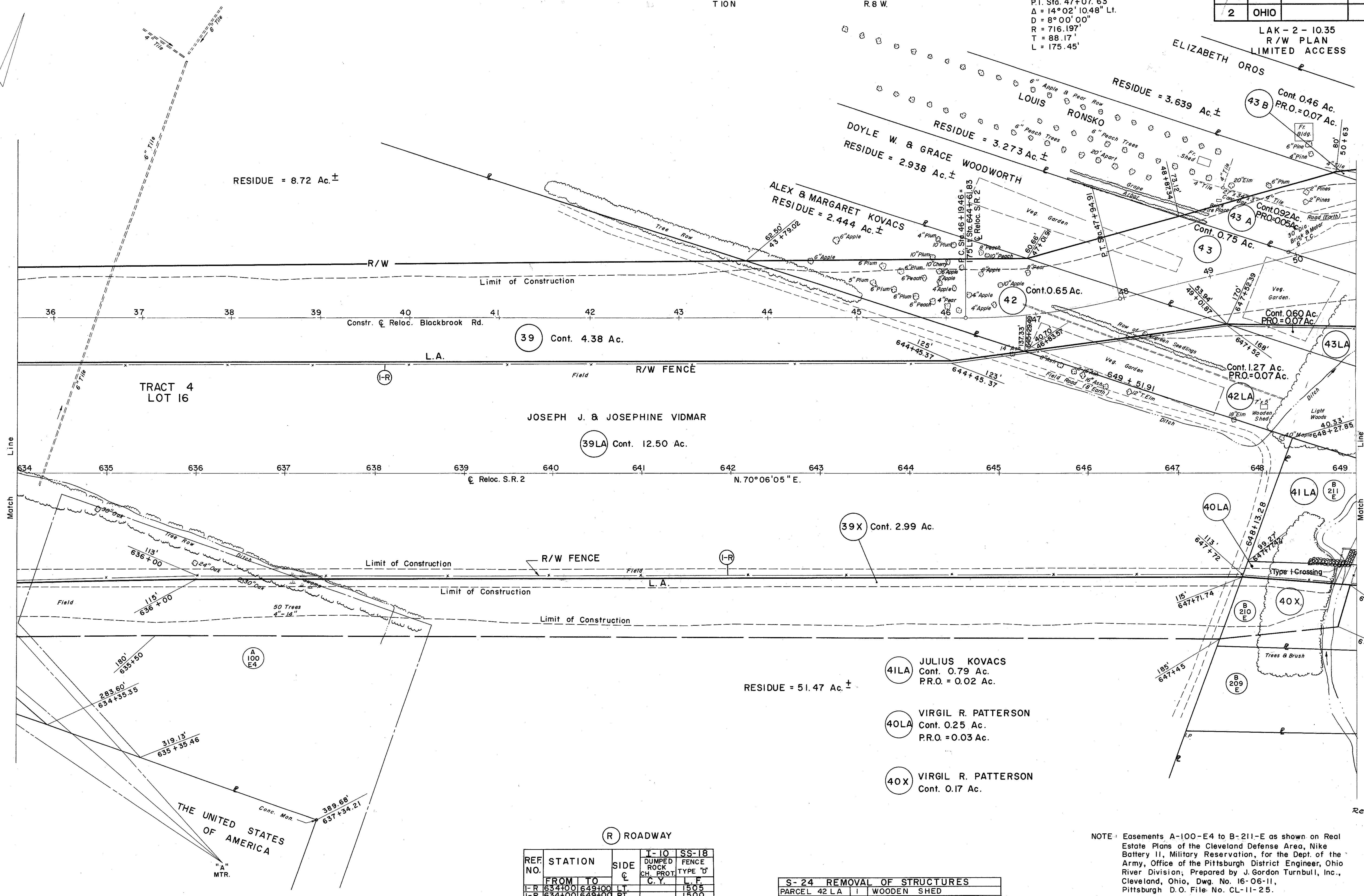


CURVE DATA
 P.I. Sta. 47+07.63
 Δ = 14°02'10.48" Lt.
 D = 8°00'00"
 R = 716.197'
 T = 88.17'
 L = 175.45'

FED. RD. DIVISION	STATE	PROJECT
2	OHIO	

378
379
17
18

LAK-2-10.35
R/W PLAN
LIMITED ACCESS



39 Cont. 4.38 Ac.

39LA Cont. 12.50 Ac.

39X Cont. 2.99 Ac.

41LA JULIUS KOVACS
Cont. 0.79 Ac.
P.R.O. = 0.02 Ac.

40LA VIRGIL R. PATTERSON
Cont. 0.25 Ac.
P.R.O. = 0.03 Ac.

40X VIRGIL R. PATTERSON
Cont. 0.17 Ac.

(R) ROADWAY

REF. NO.	STATION FROM TO	SIDE	I-10 DUMPED ROCK CH. PROT. C.Y.	SS-18 FENCE TYPE 'D' L.F.
I-R	634+00 649+00	LT.		1505
I-R	634+00 649+00	RT.		1500

S-24 REMOVAL OF STRUCTURES	
PARCEL 42 LA	WOODEN SHED

NOTE: Easements A-100-E4 to B-211-E as shown on Real Estate Plans of the Cleveland Defense Area, Nike Battery II, Military Reservation, for the Dept. of the Army, Office of the Pittsburgh District Engineer, Ohio River Division; Prepared by J. Gordon Turnbull, Inc., Cleveland, Ohio, Dwg. No. 16-06-11, Pittsburgh D.O. File No. CL-11-25.

Rev. 1-25-60