

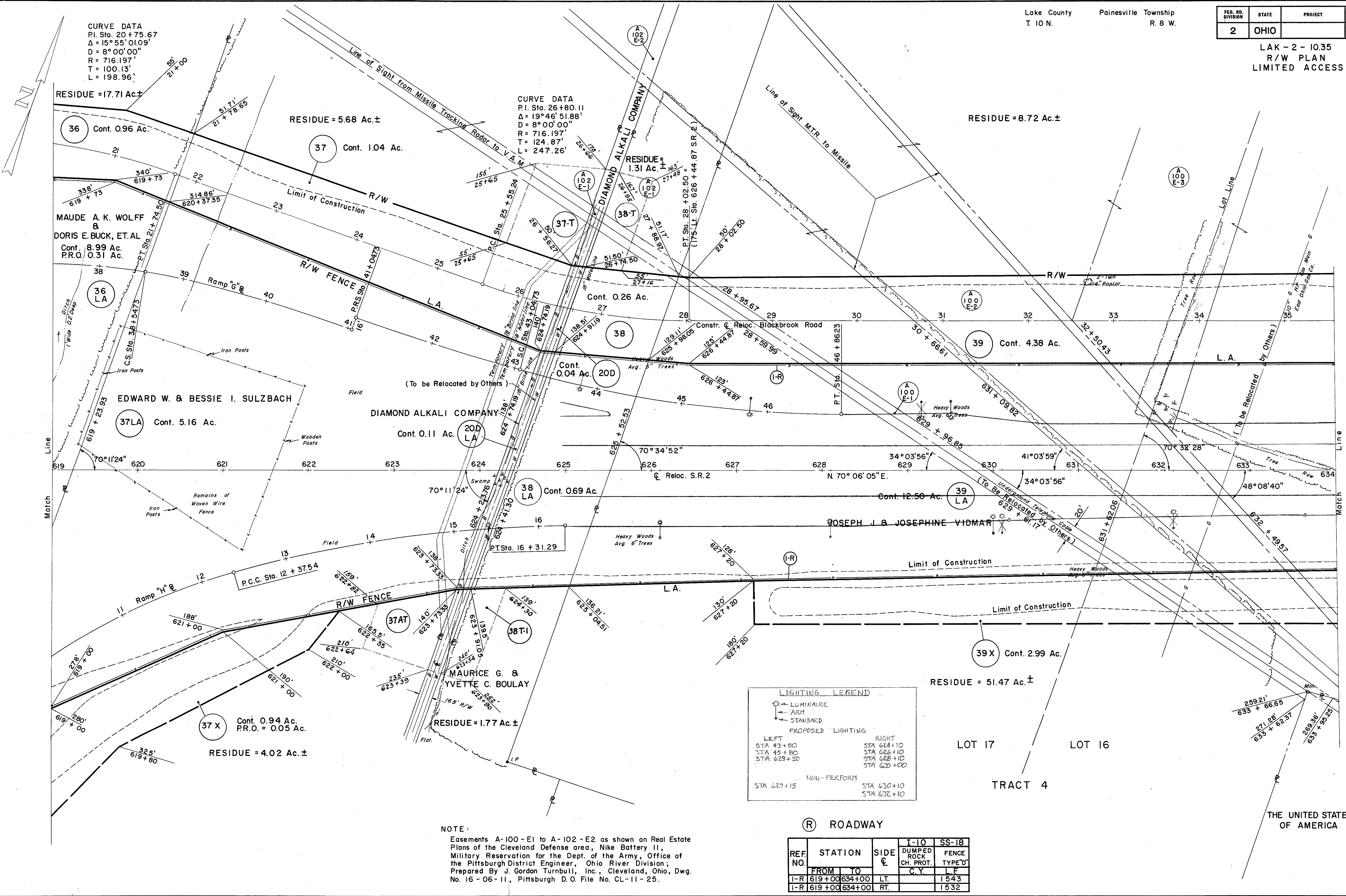
FED. RD. DIVISION	STATE	PROJECT
2	OHIO	

377  
379  
16  
18

LAK - 2 - 10.35  
R/W PLAN  
LIMITED ACCESS

CURVE DATA  
P.I. Sta. 20 + 75.67  
Δ = 15° 55' 01.09"  
D = 8° 00' 00"  
R = 716.197'  
T = 100.13'  
L = 198.96'

CURVE DATA  
P.I. Sta. 26 + 80.11  
Δ = 19° 46' 51.88"  
D = 8° 00' 00"  
R = 716.197'  
T = 124.87'  
L = 247.26'



RESIDUE = 17.71 Ac. ±  
RESIDUE = 5.68 Ac. ±  
RESIDUE = 8.72 Ac. ±  
RESIDUE = 1.31 Ac. ±  
RESIDUE = 0.26 Ac.  
RESIDUE = 0.04 Ac. (20D)  
RESIDUE = 0.11 Ac. (20D LA)  
RESIDUE = 0.69 Ac. (38 LA)  
RESIDUE = 12.50 Ac. (39 LA)  
RESIDUE = 51.47 Ac. ±  
RESIDUE = 4.02 Ac. ±  
RESIDUE = 1.77 Ac. ±  
RESIDUE = 0.94 Ac. P.R.O. = 0.05 Ac. (37 X)  
RESIDUE = 0.96 Ac. (36)  
Cont. 1.04 Ac. (37)  
Cont. 0.96 Ac. (36)  
Cont. 8.99 Ac. P.R.O. 0.31 Ac. (MAUDE A. K. WOLFF & DORIS E. BUCK, ET AL.)  
Cont. 5.16 Ac. (EDWARD W. & BESSIE I. SULZBACH)  
Cont. 0.11 Ac. (DIAMOND ALKALI COMPANY)  
Cont. 0.69 Ac. (MAURICE G. & YVETTE C. BOULAY)  
Cont. 4.38 Ac. (39)  
Cont. 2.99 Ac. (39 X)  
Cont. 0.26 Ac. (38-T)  
Cont. 1.31 Ac. ± (38-T)  
Cont. 0.04 Ac. (20D)  
Cont. 0.11 Ac. (20D LA)  
Cont. 0.69 Ac. (38 LA)  
Cont. 12.50 Ac. (39 LA)  
Cont. 2.99 Ac. (39 X)

LIGHTING LEGEND

☉ LUMINAIRE  
— ARM  
— STANDARD

PROPOSED LIGHTING

LEFT	RIGHT
STA 43 + 80	STA 624 + 10
STA 45 + 80	STA 626 + 10
STA 629 + 50	STA 628 + 10
	STA 630 + 00

NOU - PERFORM

STA 629 + 15	STA 630 + 10
	STA 632 + 10

NOTE:  
Easements A-100-E1 to A-102-E2 as shown on Real Estate Plans of the Cleveland Defense area, Nike Battery 11, Military Reservation for the Dept. of the Army, Office of the Pittsburgh District Engineer, Ohio River Division; Prepared By J. Gordon Turnbull, Inc., Cleveland, Ohio, Dwg. No. 16 - 06 - 11, Pittsburgh D. O. File No. CL - 11 - 25.

Ⓡ ROADWAY

REF. NO.	STATION	SIDE	I-10 DUMPED ROCK CH. PROT.	SS-18 FENCE TYPE'D
I-R	619+00	LT.		1543
I-R	619+00	RT.		1532

THE UNITED STATES OF AMERICA

Rev. 6-8-60