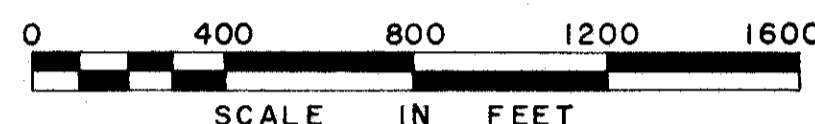


LOCATION PLAN

LAK - 2 - 10.35

MENTOR TOWNSHIP PAINESVILLE TOWNSHIP

LAKE COUNTY



Received _____ Time _____
 Recorded _____
 Plat Book _____ Page _____
 Signed _____ Recorder Lake County, Ohio
 Fee _____ Paid _____

363
379

2
18

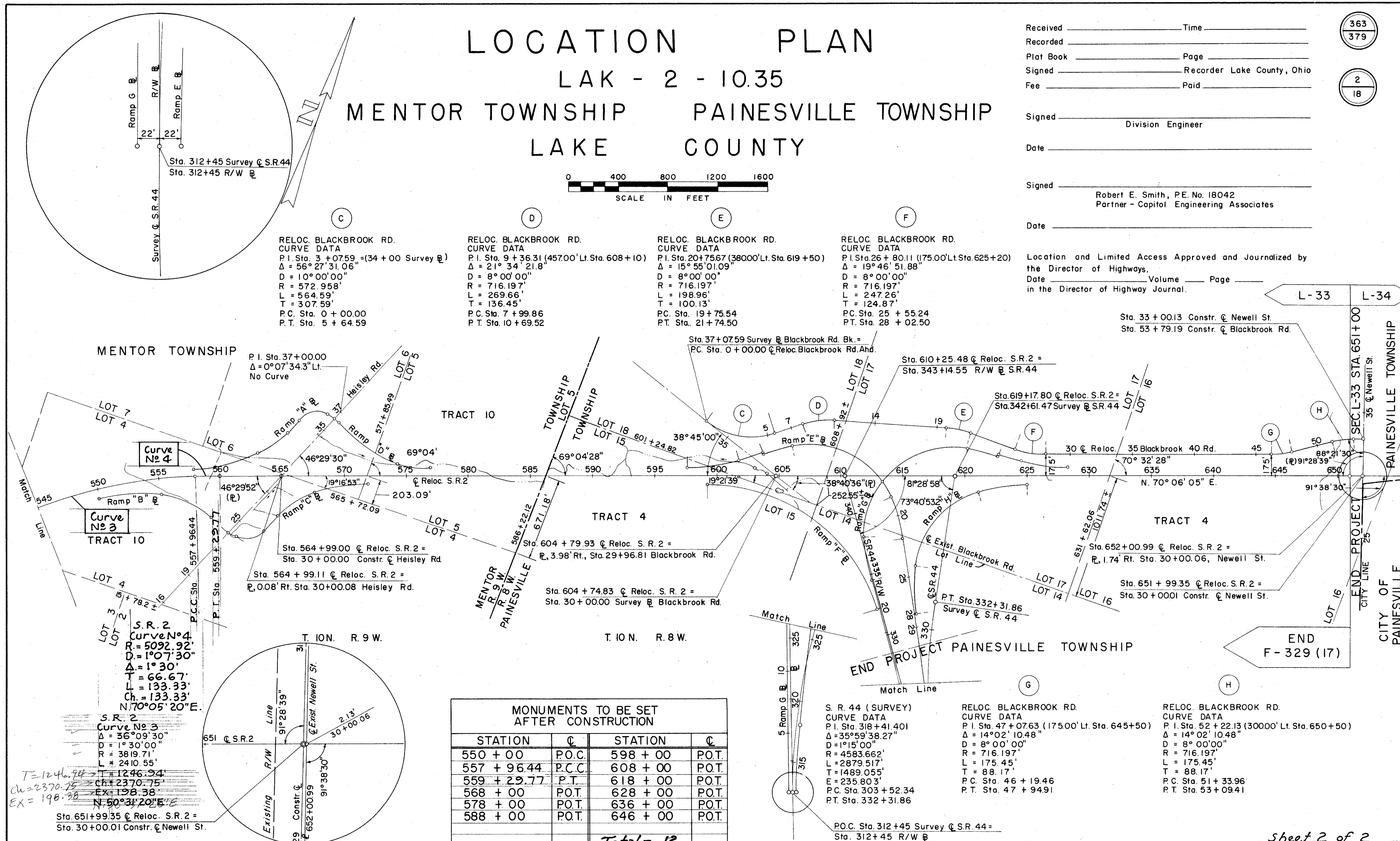
Signed _____
 Division Engineer

Date _____

Signed _____
 Robert E. Smith, P.E. No. 18042
 Partner - Capitol Engineering Associates

Date _____

Location and Limited Access Approved and Journalized by
 the Director of Highways.
 Date _____ Volume _____ Page _____
 in the Director of Highway Journal.



RELOC. BLACKBROOK RD.
 CURVE DATA
 P.I. Sta. 3 + 07.59 (34 + 00 Survey @)
 $\Delta = 56^{\circ}27'31.06''$
 $D = 10^{\circ}00'00''$
 $R = 572.958'$
 $L = 564.59'$
 $T = 307.59'$
 P.C. Sta. 0 + 00.00
 P.T. Sta. 5 + 64.59

RELOC. BLACKBROOK RD.
 CURVE DATA
 P.I. Sta. 9 + 36.31 (457.00' Lt. Sta. 608 + 10)
 $\Delta = 21^{\circ}34'21.8''$
 $D = 8^{\circ}00'00''$
 $R = 716.197'$
 $L = 269.66'$
 $T = 136.45'$
 P.C. Sta. 7 + 99.86
 P.T. Sta. 10 + 69.52

RELOC. BLACKBROOK RD.
 CURVE DATA
 P.I. Sta. 20 + 75.67 (380.00' Lt. Sta. 619 + 50)
 $\Delta = 15^{\circ}55'01.09''$
 $D = 8^{\circ}00'00''$
 $R = 716.197'$
 $L = 198.96'$
 $T = 100.13'$
 P.C. Sta. 19 + 75.54
 P.T. Sta. 21 + 74.50

RELOC. BLACKBROOK RD.
 CURVE DATA
 P.I. Sta. 26 + 80.11 (175.00' Lt. Sta. 625 + 20)
 $\Delta = 19^{\circ}46'51.88''$
 $D = 8^{\circ}00'00''$
 $R = 716.197'$
 $L = 247.26'$
 $T = 124.87'$
 P.C. Sta. 25 + 55.24
 P.T. Sta. 28 + 02.50

MENTOR TOWNSHIP
 P.I. Sta. 37 + 00.00
 $\Delta = 0^{\circ}07'34.3''$ Lt.
 No Curve

TRACT 10
 Curve No. 4
 $R = 5092.92'$
 $D = 1^{\circ}07'30''$
 $T = 66.67'$
 $L = 133.33'$
 $Ch. = 133.33'$
 $N. 70^{\circ}05'20'' E.$

TRACT 10
 Curve No. 3
 $\Delta = 36^{\circ}09'30''$
 $D = 1^{\circ}30'00''$
 $R = 3819.71'$
 $L = 2410.55'$
 $T = 1246.94'$
 $Ch. = 2370.75'$
 $Ex. = 198.38'$
 $N. 50^{\circ}31'20'' E.$

S.R. 2
 Curve No. 3
 $\Delta = 36^{\circ}09'30''$
 $D = 1^{\circ}30'00''$
 $R = 3819.71'$
 $L = 2410.55'$
 $T = 1246.94'$
 $Ch. = 2370.75'$
 $Ex. = 198.38'$
 $N. 50^{\circ}31'20'' E.$

TRACT 10
 Curve No. 4
 $R = 5092.92'$
 $D = 1^{\circ}07'30''$
 $T = 66.67'$
 $L = 133.33'$
 $Ch. = 133.33'$
 $N. 70^{\circ}05'20'' E.$

TRACT 10
 Curve No. 3
 $\Delta = 36^{\circ}09'30''$
 $D = 1^{\circ}30'00''$
 $R = 3819.71'$
 $L = 2410.55'$
 $T = 1246.94'$
 $Ch. = 2370.75'$
 $Ex. = 198.38'$
 $N. 50^{\circ}31'20'' E.$

MONUMENTS TO BE SET AFTER CONSTRUCTION			
STATION	☉	STATION	☉
550 + 00	P.O.C.	598 + 00	P.O.T.
557 + 96.44	P.C.C.	608 + 00	P.O.T.
559 + 29.77	P.T.	618 + 00	P.O.T.
568 + 00	P.O.T.	628 + 00	P.O.T.
578 + 00	P.O.T.	636 + 00	P.O.T.
588 + 00	P.O.T.	646 + 00	P.O.T.
Total = 12			

S.R. 44 (SURVEY)
 CURVE DATA
 P.I. Sta. 318 + 41.401
 $\Delta = 35^{\circ}59'38.27''$
 $D = 1^{\circ}15'00''$
 $R = 4583.662'$
 $L = 2879.517'$
 $T = 1489.055'$
 $E = 235.803'$
 P.C. Sta. 303 + 52.34
 P.T. Sta. 332 + 31.86

RELOC. BLACKBROOK RD.
 CURVE DATA
 P.I. Sta. 47 + 07.63 (175.00' Lt. Sta. 645 + 50)
 $\Delta = 14^{\circ}02'10.48''$
 $D = 8^{\circ}00'00''$
 $R = 716.197'$
 $L = 175.45'$
 $T = 88.17'$
 P.C. Sta. 46 + 19.46
 P.T. Sta. 47 + 94.91

RELOC. BLACKBROOK RD.
 CURVE DATA
 P.I. Sta. 52 + 22.13 (300.00' Lt. Sta. 650 + 50)
 $\Delta = 14^{\circ}02'10.48''$
 $D = 8^{\circ}00'00''$
 $R = 716.197'$
 $L = 175.45'$
 $T = 88.17'$
 P.C. Sta. 51 + 33.96
 P.T. Sta. 53 + 09.41