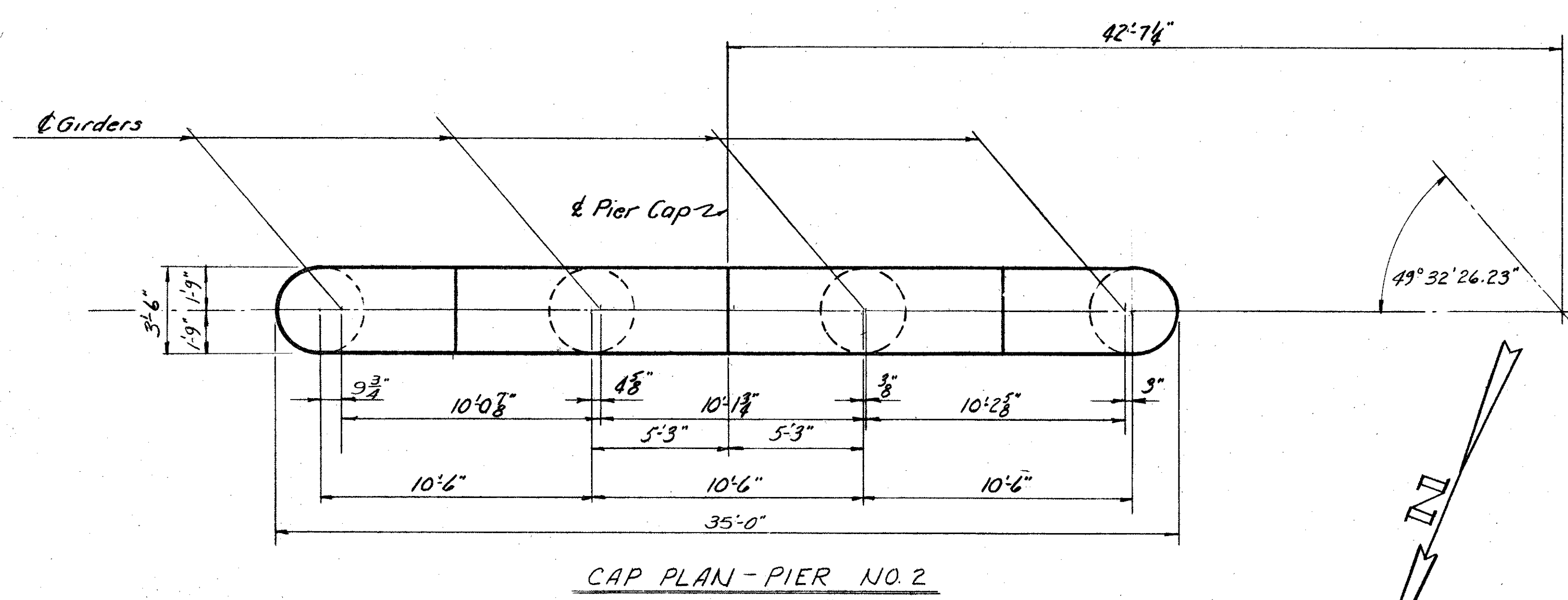
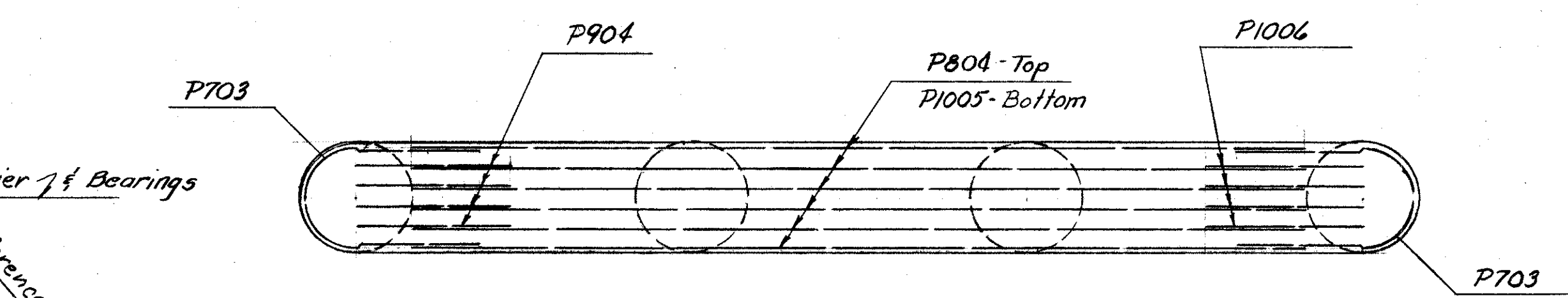


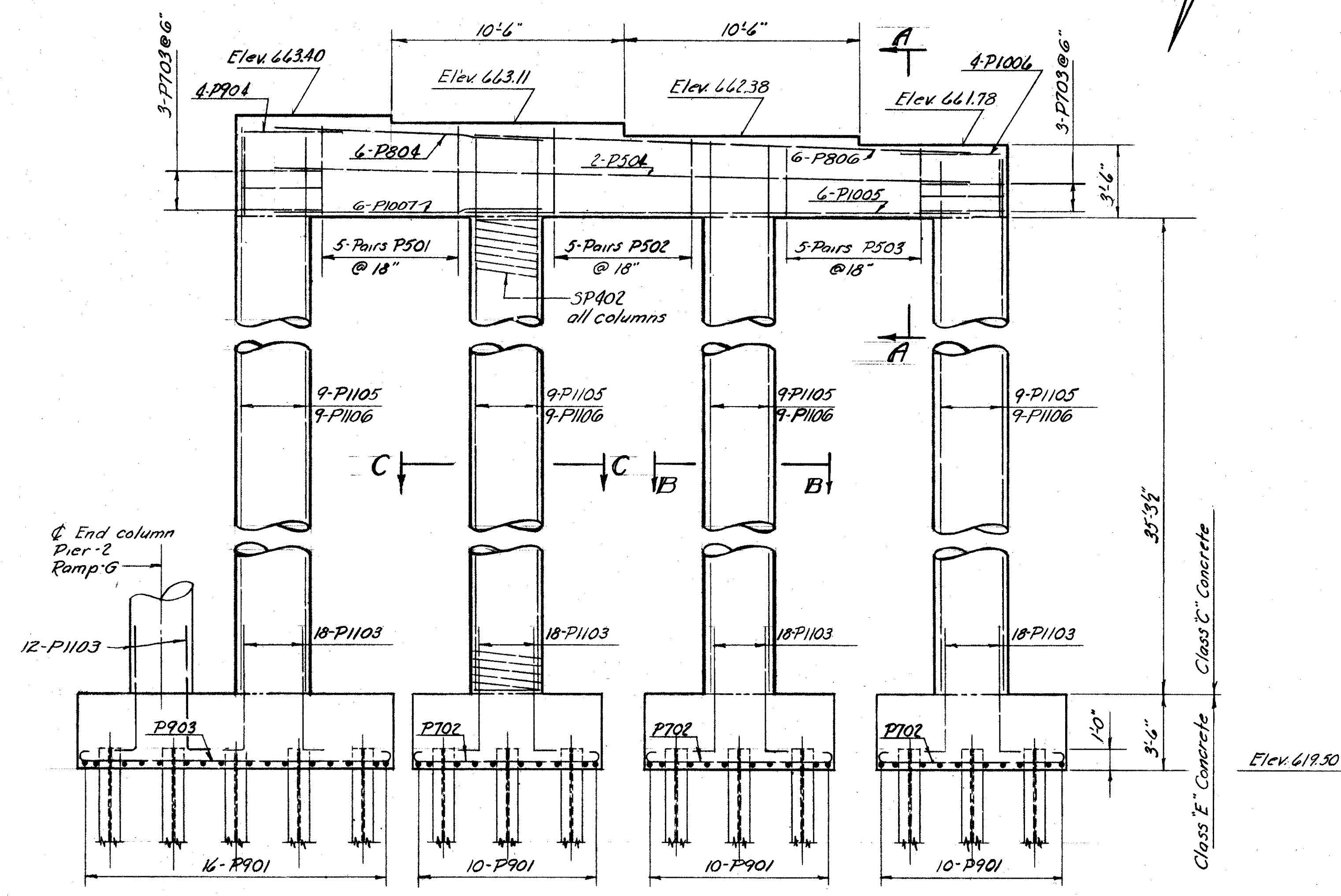
LAKE COUNTY  
SEC. LAK-2-10.35



CAP PLAN - PIER NO. 2

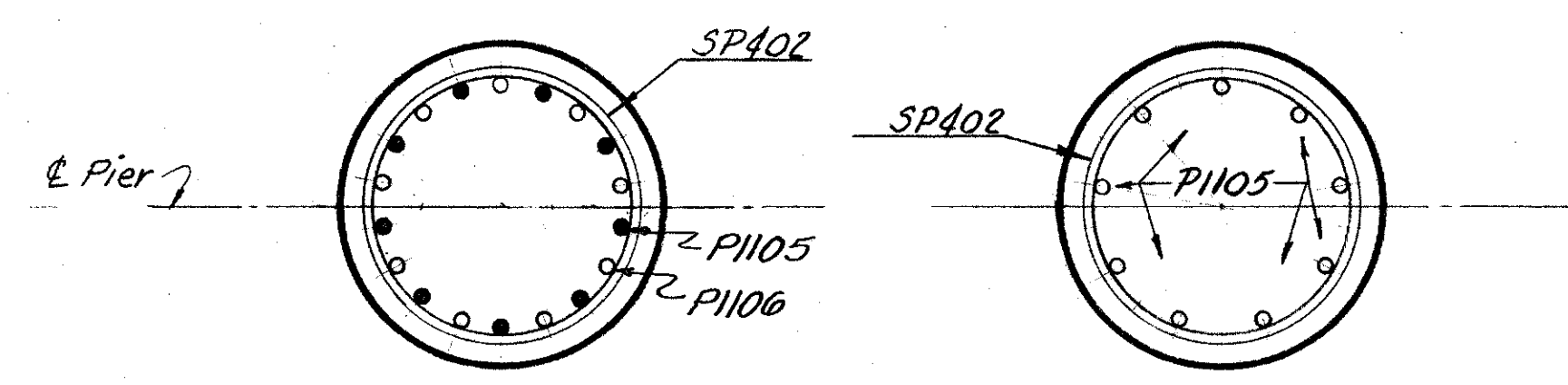


CAP REINFORCING PIER-2



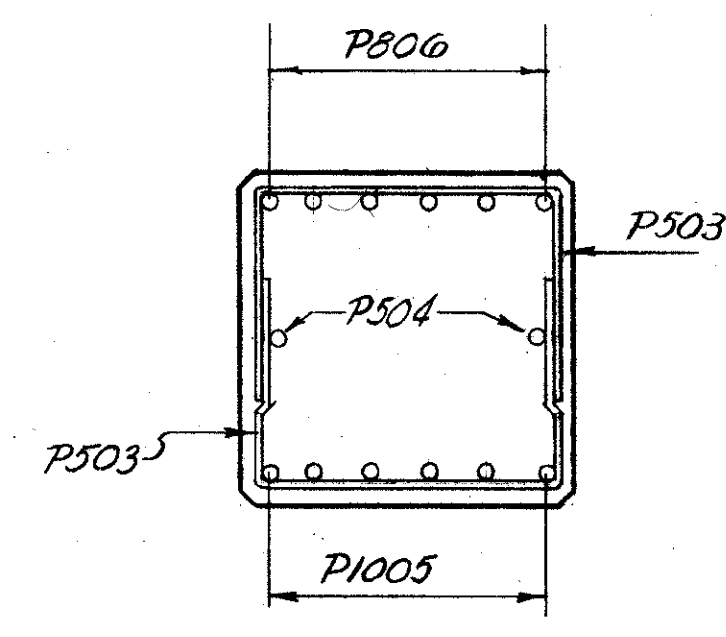
ELEVATION PIER-2  
LOOKING AHEAD

All Piles are 12 BP-53.

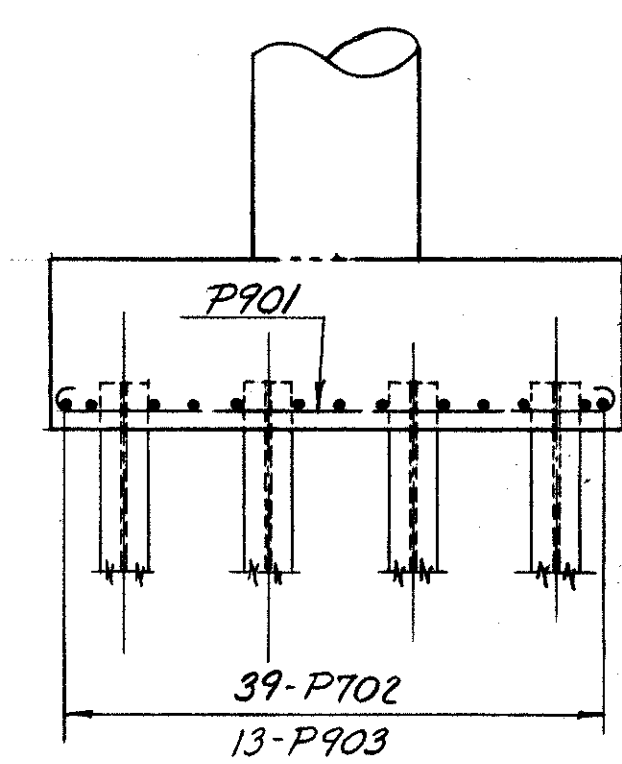


SECTION B-B

SECTION C-C



SECTION A-A



END ELEVATION  
FOOTINGS

NOTES

Piles shall be driven with a hammer of not less than 11,000 ft-lbs per blow to firm contact with shale. If the length of penetration is approximately equal to the depth to shale according to the bridge foundation investigation report, the firm contact shall be considered as attained when the capacity according to the formula in Sec. 5-18.05 is not less than the following value for a pile hammer of the indicated energy rating:  
43 tons per pile using a 11,000 ft-lb hammer  
41 tons per pile using a 15,000 ft-lb hammer  
If the energy ratings of the hammer is between the ratings as shown above, the required formula capacity shall be determined by interpolation. The design load is 35 tons per pile for the pier piles.

Reinforcing Steel shall have a minimum of three (3) inches of cover in the footing and two (2) inches elsewhere.

Special care shall be taken in placing the reinforcing steel in the top of the cap, so it does not interfere with the drilling of anchor bolt holes.

SEC. L-33

PREPARED BY  
CAPITOL ENGINEERING ASSOCIATES, DILLSBURG, PA.  
FOR  
STATE OF OHIO  
DEPARTMENT OF HIGHWAYS  
DIVISION OF DESIGN AND CONSTRUCTION  
BUREAU OF BRIDGES  
PIER NO. 2  
BRIDGE NO. LAK-2-1351  
RELOC. S.R. 2 UNDER S.R. 44 - RAMP E  
LAKE COUNTY  
STA. 613 + 25.24

DESIGNED	DRAWN	TRACED	CHECKED	REVISED DATE	REVISED
	RLK				

MICROFILMED  
JUL 1 1985