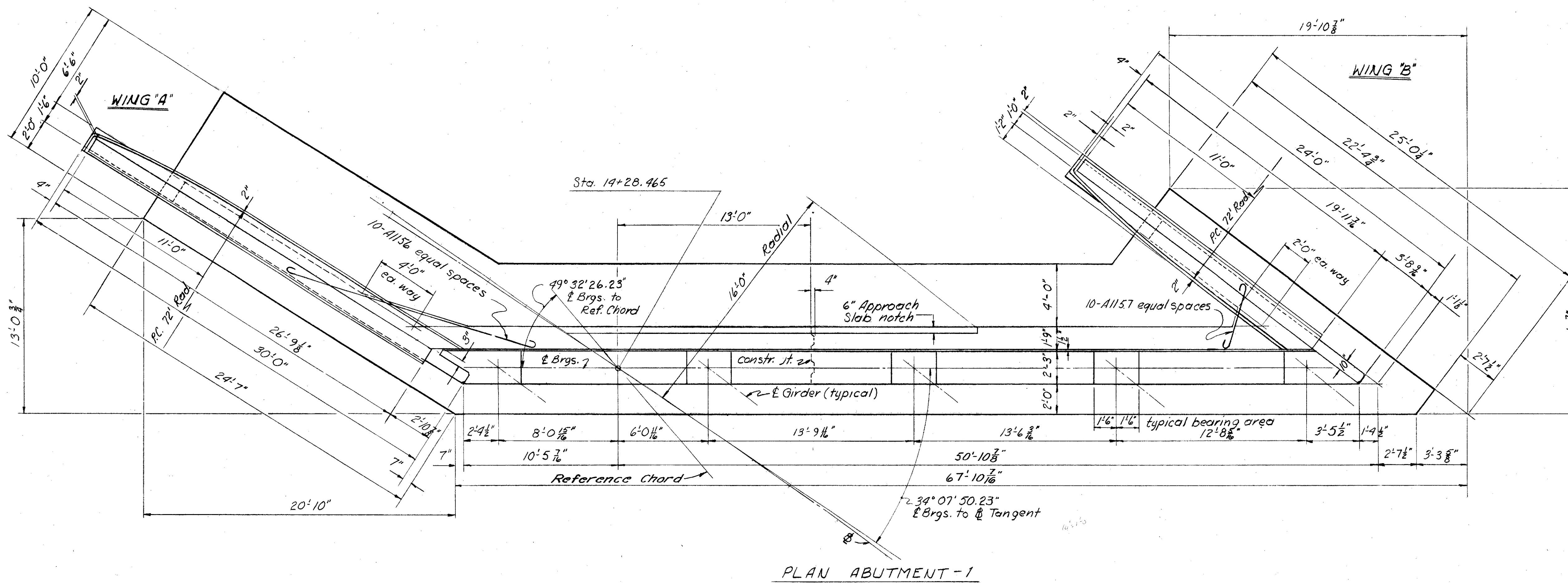
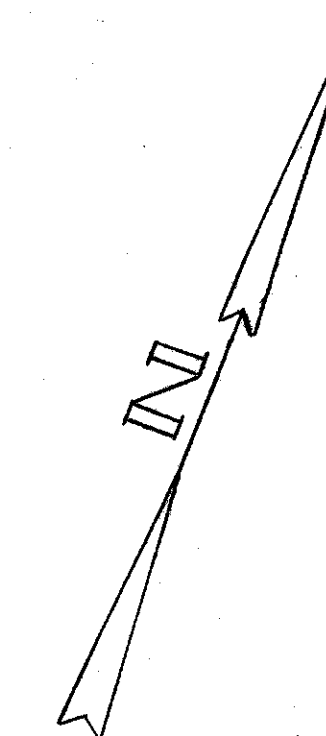
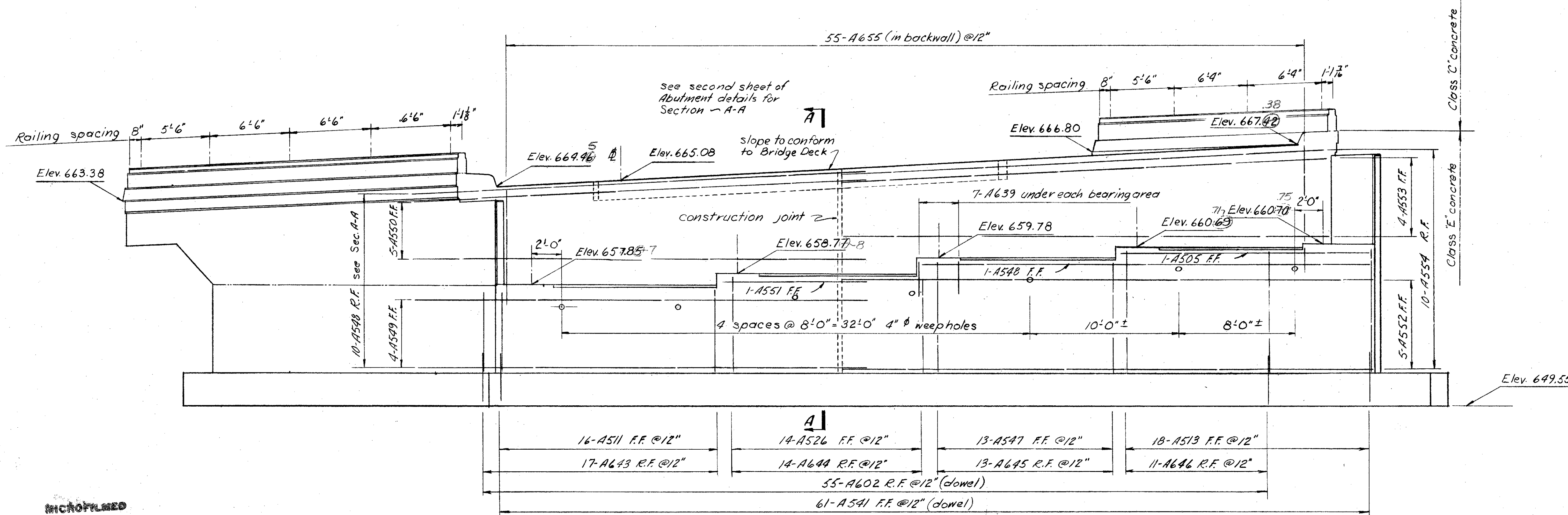


LAKE COUNTY
LAK-2-10.35



PLAN ABUTMENT-1



ELEVATION ABUTMENT-1

NOTES:
 • Reinforcing steel shall have a minimum of three (3) inches of cover in the footing and two (2) inches elsewhere.
 • F.F. denotes Front Face.
 • R.F. denotes Rear Face.
 • Ea.F. denotes Each Face.
 • T & B denotes Top & Bottom.

SEC. L-33

PREPARED BY
CAPITOL ENGINEERING ASSOCIATES, DILLSBURG, PA.
FOR

STATE OF OHIO
DEPARTMENT OF HIGHWAYS
DIVISION OF DESIGN AND CONSTRUCTION
BUREAU OF BRIDGES

ABUTMENT #1
BRIDGE NO. LAK-2-1351
RELOC. S.R.2 UNDER S.R.44 RAMP E
LAKE COUNTY

STA. 613+25.24

DESIGNED	DRAWN	TRACED	CHECKED	REVISED DATE	REVISED
DRT	DRT				7-27-60

MICROFILMED
JUL 1 1985