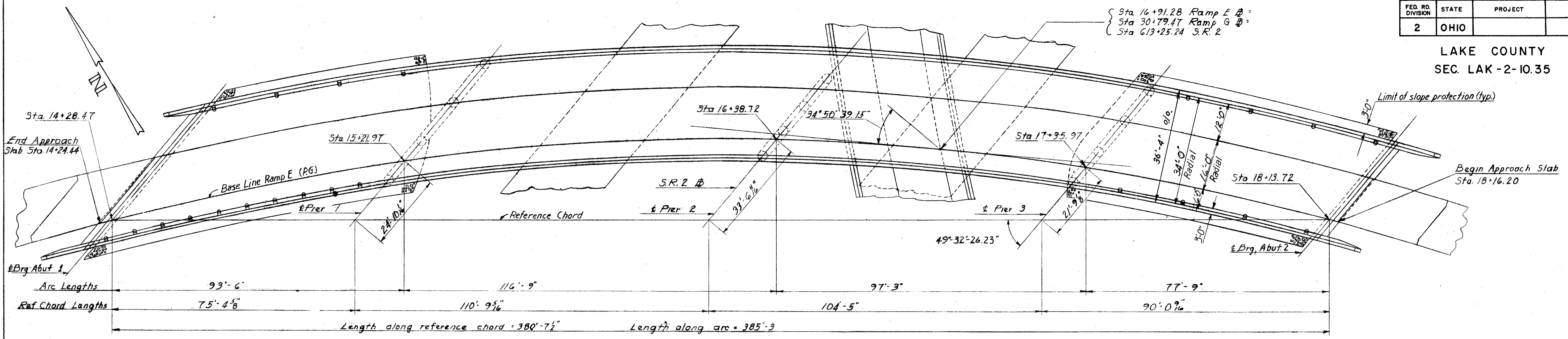
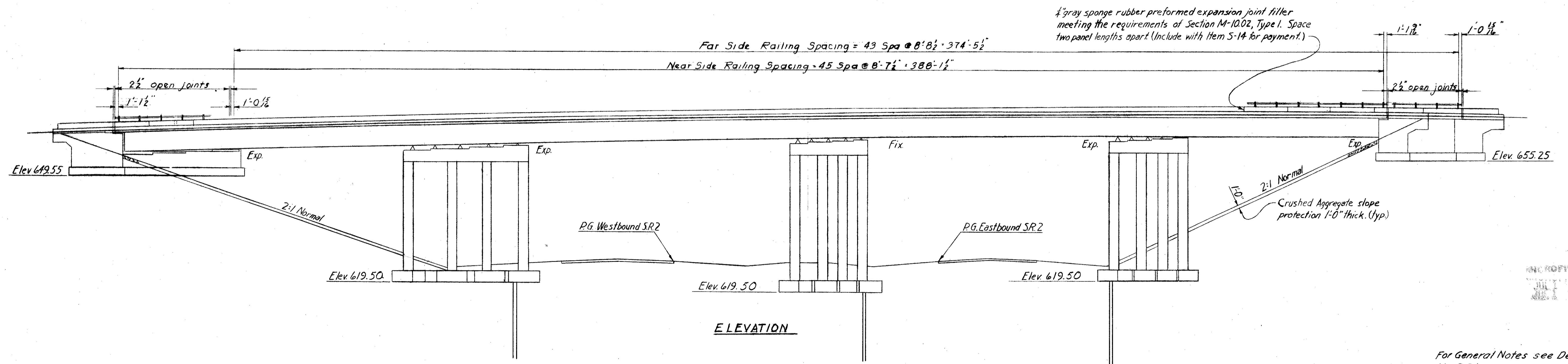


LAKE COUNTY  
SEC. LAK-2-10.35



PLAN



ELEVATION

ESTIMATED QUANTITIES															
Item	Total	Unit	Description	Superstr.	Abuts	Piers	General	Item	Total	Unit	Description	Superstr.	Abuts	Piers	General
E-2	972	Cu. Yd.	Unclassified Excavation		605	367		S-14	855	Lin. Ft.	Railing (Aluminum rail & supports, concrete parapets)	767	88		
S-1	450	Cu. Yd.	Class "C" Concrete, Superstructure	450				S-16	Lump	Sum	First test pile				Lump
S-1	225	Cu. Yd.	Class "C" Concrete, Pier Caps & Columns			225		S-18	3575	Lin. Ft.	Steel Piles ~ 12BP53			3575	
S-1	210	Cu. Yd.	Class "E" Concrete, Abutments above Footings		210			S-29	63	Cu. Yd.	Porous Backfill		63		
S-1	285	Cu. Yd.	Class "E" Concrete, Footings		117	168		I-10	881	Sq. Yd.	Crushed Aggregate Slope Protection	881			
S-4	214,504	Lbs.	Reinforcing Steel	128,205	26,777	59,522									
S-7	524,500	Lbs.	Structural Steel	524,500											
S-8	524,500	Lbs.	Field Painting of Structural Steel, as per plan	524,500											

For General Notes see Deck Details sheet, No. 361.

SEC. L-33

PREPARED BY  
CAPITOL ENGINEERING ASSOCIATES, DILLSBURG, PA.  
FOR

STATE OF OHIO  
DEPARTMENT OF HIGHWAYS  
DIVISION OF DESIGN AND CONSTRUCTION  
BUREAU OF BRIDGES

GENERAL PLAN  
BRIDGE NO. LAK-2-1351  
RELOC. S.R. 2 UNDER S.R. 44 - RAMP E  
LAKE COUNTY

STA. 613 + 25.24

DESIGNED	DRAWN	TRACED	CHECKED	REVISED DATE	REVISED
	CWB				